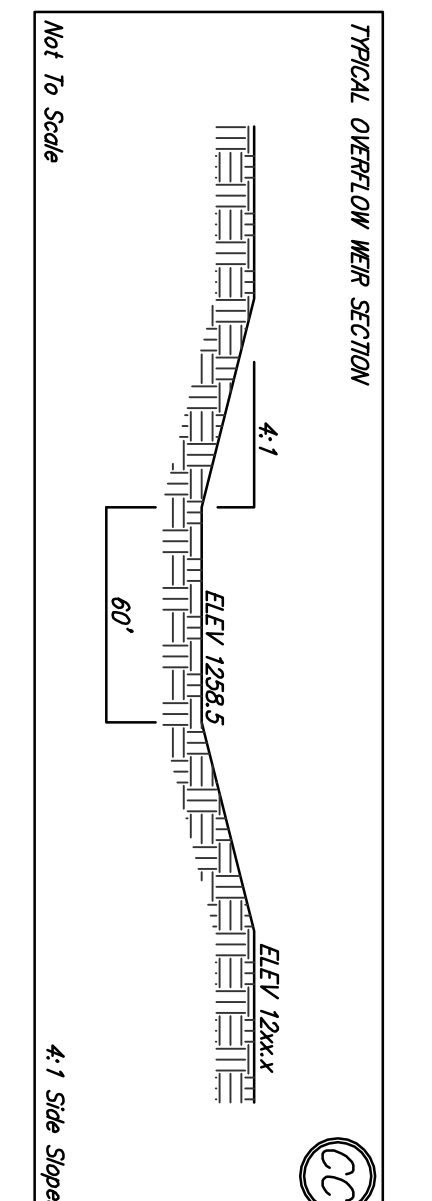
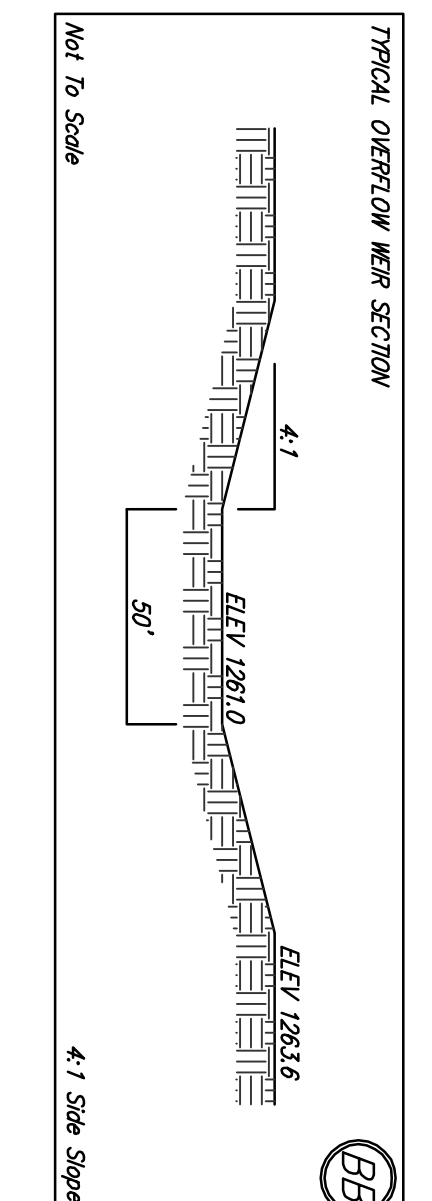
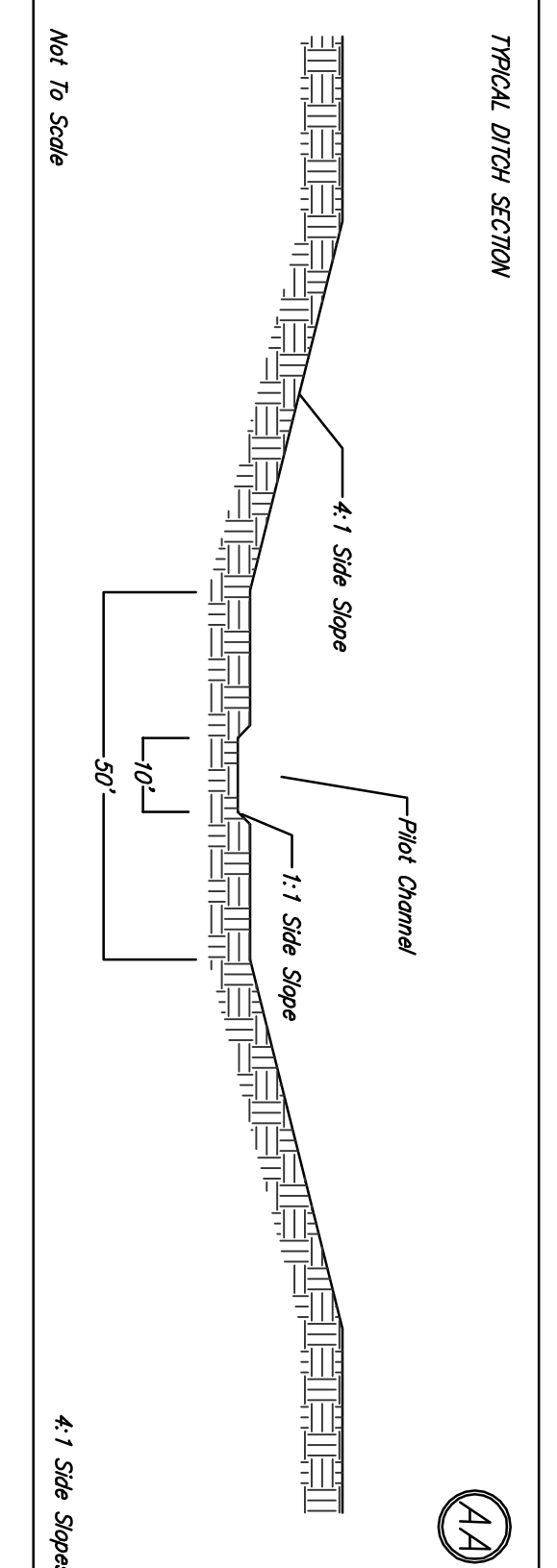
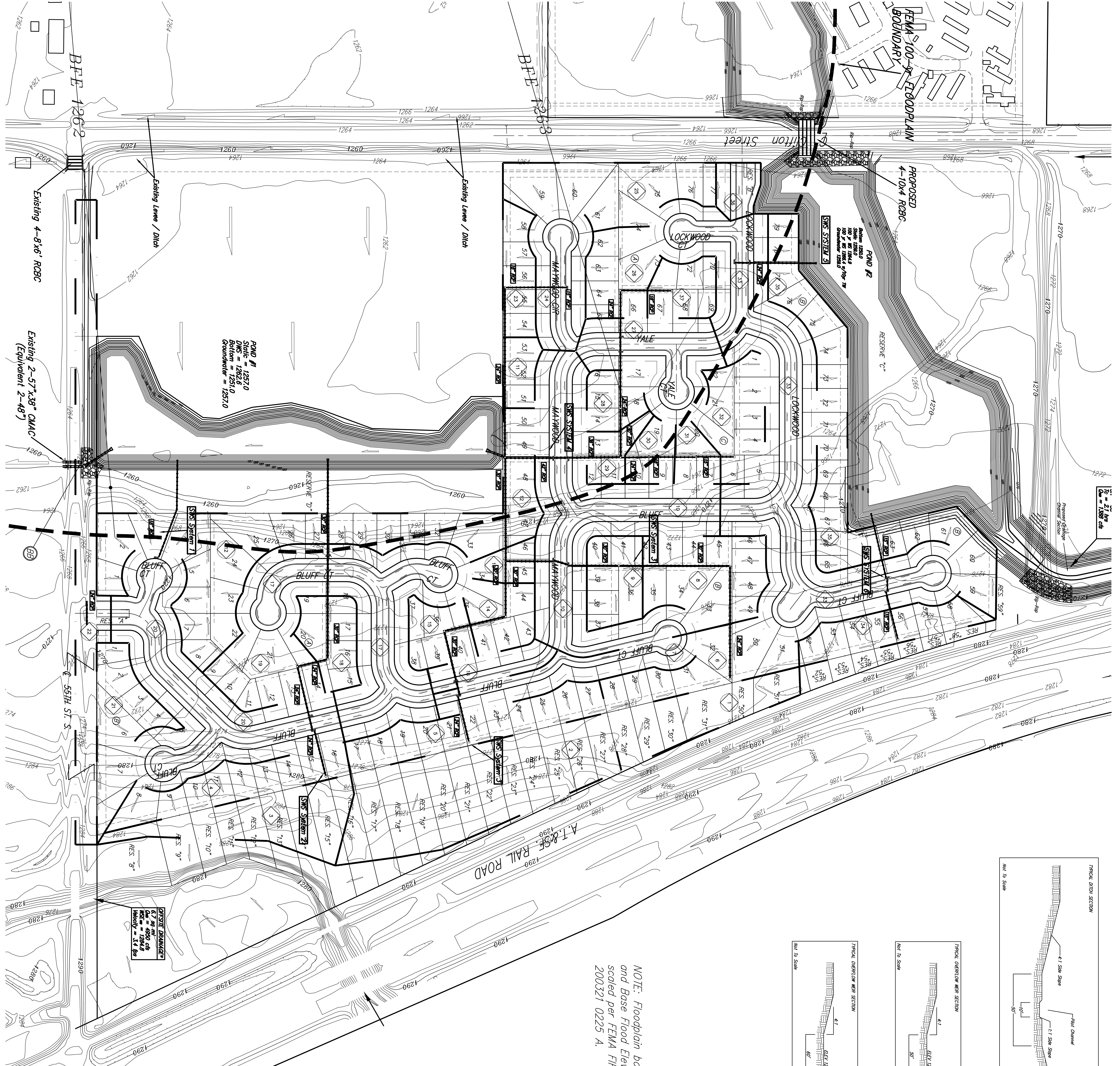
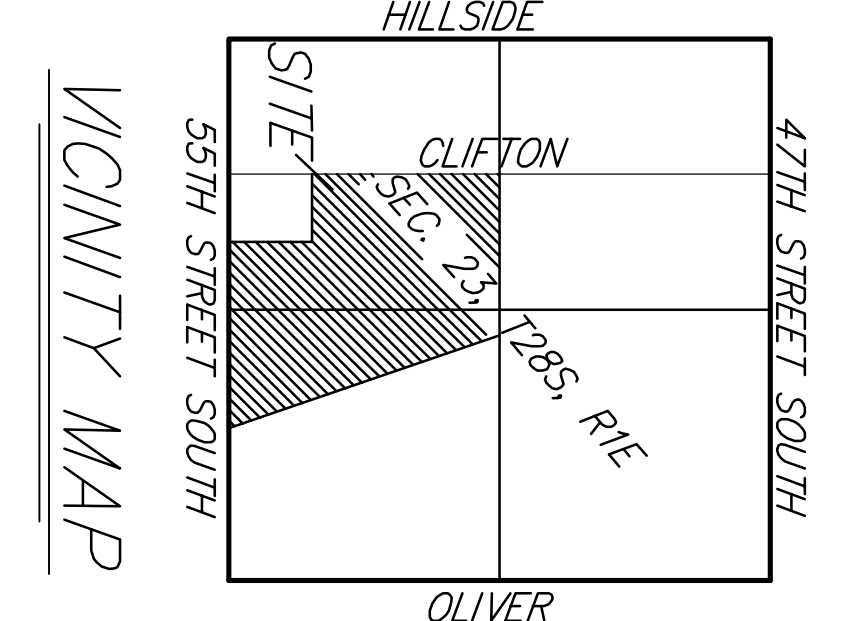


DRAINAGE PLAN CLIFTON HEIGHTS ADDITION WICHITA, SEDGWICK COUNTY, KANSAS



NOTE: Floodplain boundaries and Base Flood Elevations scaled per FEMA FIRM 200321 0225 A.

DATE OF REVISION: 10 OCTOBER 2005
 DATE OF REVISION: 28 FEBRUARY 2007
 DATE OF REVISION: 11 FEBRUARY 2007
 DATE OF REVISION: 11 FEBRUARY 2007



NOTE: On-site hydraulic data calculations per 53th Street Bridge Plans obtained from Sedgwick County Public Works Department.