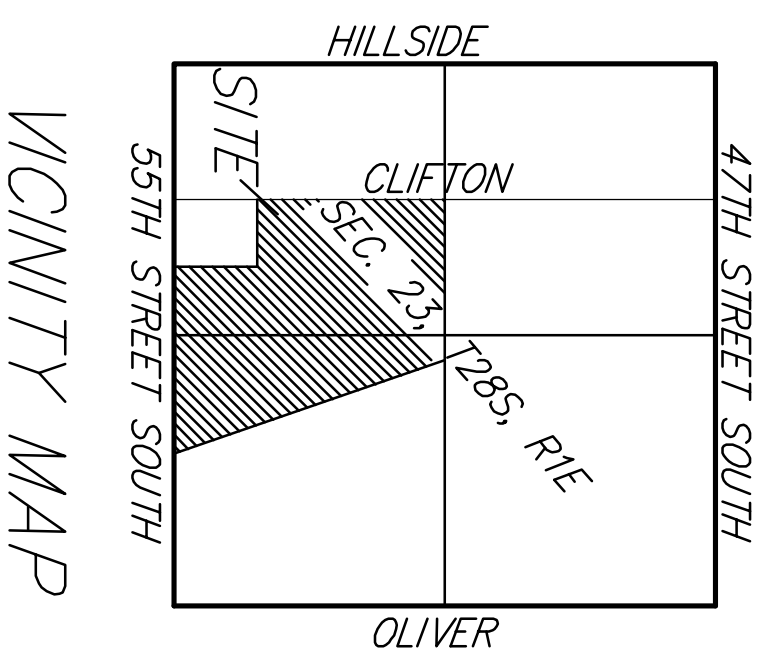
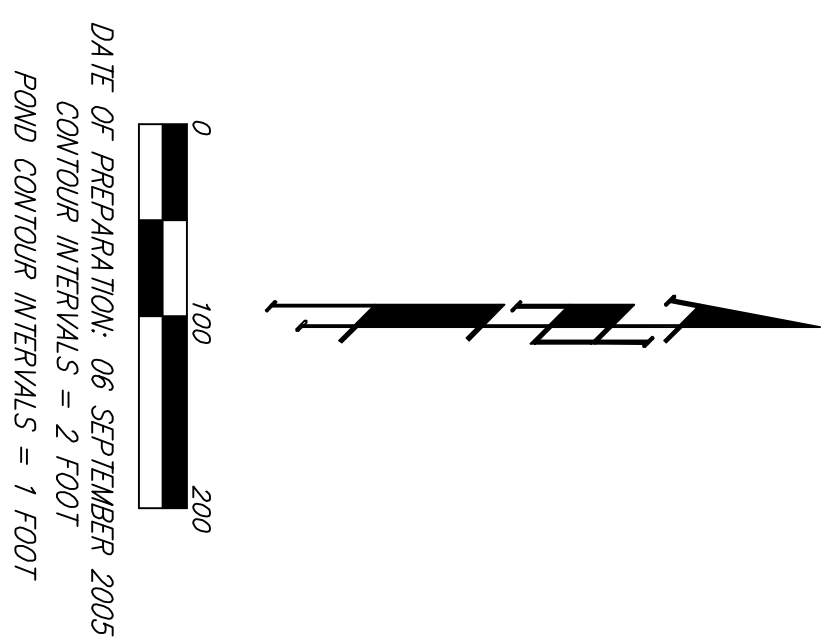


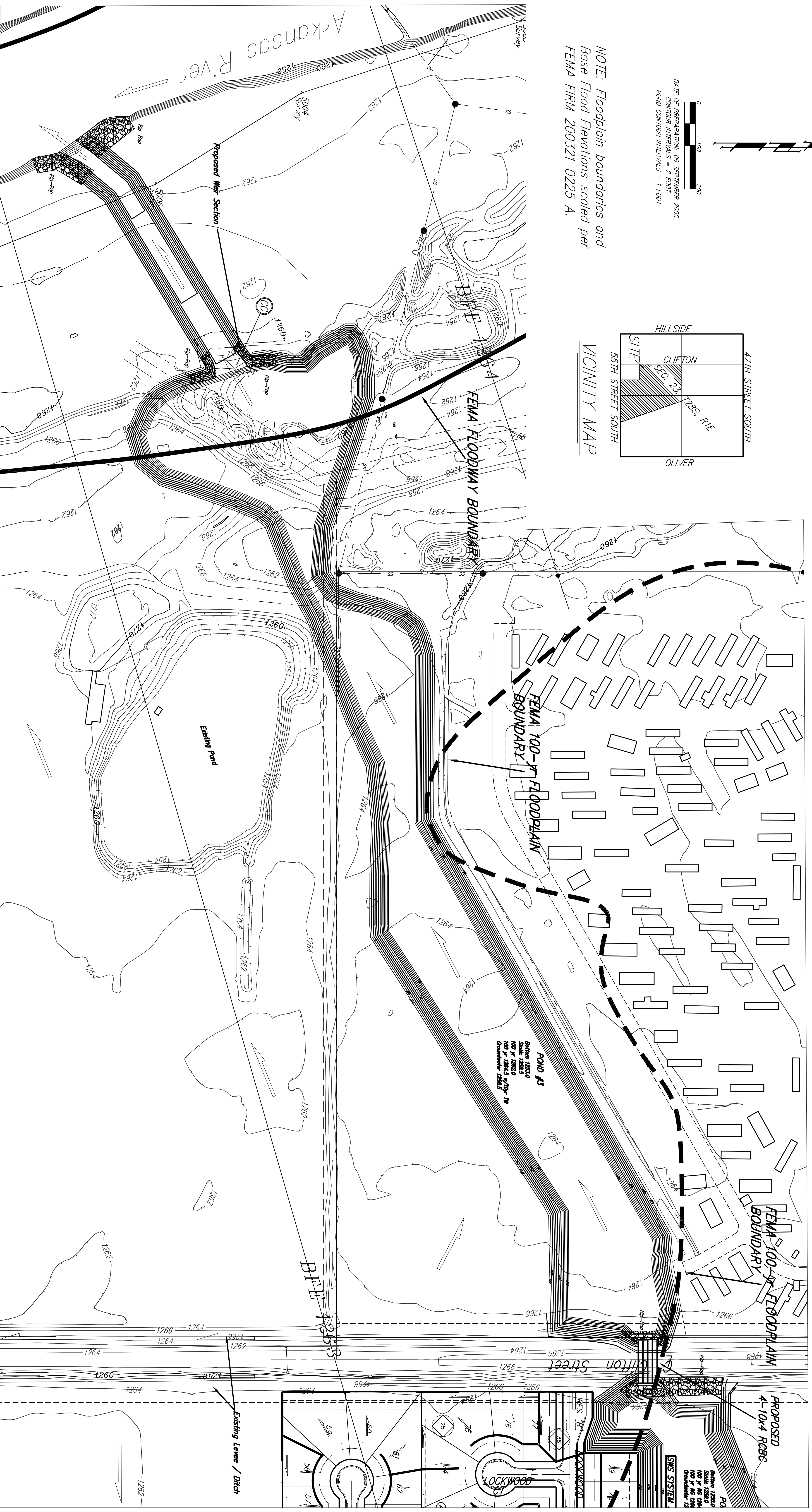
# DRAINAGE PLAN - POND SYSTEM EXHIBIT

# CLIFTON HEIGHTS ADDITION

# WICHITA, SEDGWICK COUNTY, KANSAS



NOTE: Floodplain boundaries and Base Flood Elevations scaled per FEMA FIRM 200321 0225 A.



NOTE: Existing Contours are 2 ft intervals. Proposed Contours are 1ft intervals.

