

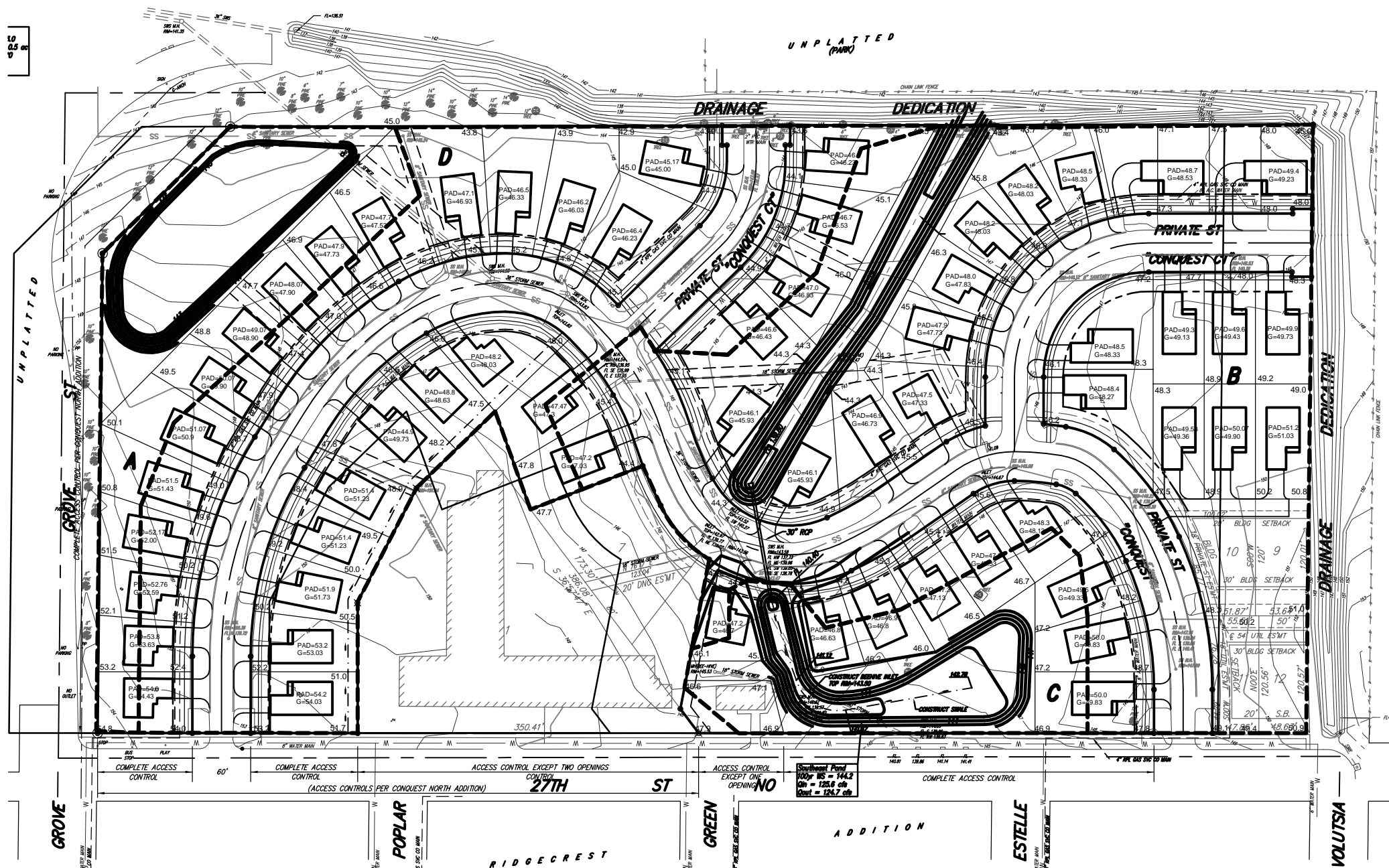
# DRAINAGE PLAN

## CONQUEST NORTH SECOND ADDITION

A Replat of part of Conquest North Addition  
Wichita, Sedgwick County, Kansas

DRAINAGE BASINS	AREA	Q <sub>100</sub>
A Onsite West	1.7 acres	10.3 cfs
A Onsite North	7.0 acres	41.8 cfs
C Onsite East	1.3 acres	8.0 cfs
D Onsite Undetained	5.1 acres	30.1 cfs

	Junction 1
Existing 2 year	73.1 cfs
Developed 2 year	72.6 cfs
Existing 5 year	105.9 cfs
Developed 5 year	105.5 cfs
Existing 100 year	219.4 cfs
Developed 100 year	216.1 cfs



MINIMUM BUILDING PAD ELEVATION FOR LOWEST OPENING INTO ALL LOTS  
ELEVATION 146.2 CITY DATUM  
ELEVATION 1333.6 MS



See Drainage Report: January 27, 2006



**Ruggles & Bohm, P.A.**  
Engineering, Surveying, Land Planning  
924 North Main  
Wichita, Kansas 67203  
www.rbkansas.com  
(316) 264-8008  
(316) 264-4621 fax  
E-mail: info@rbkansas.com