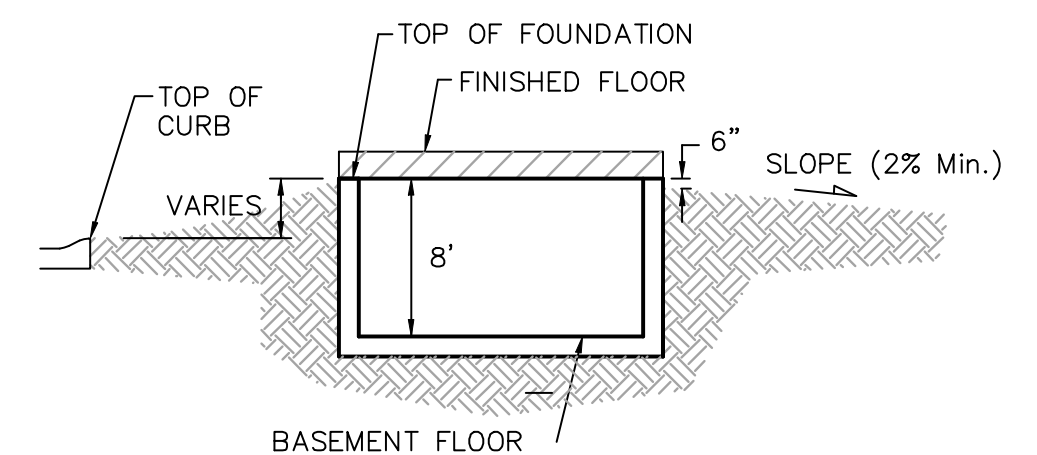
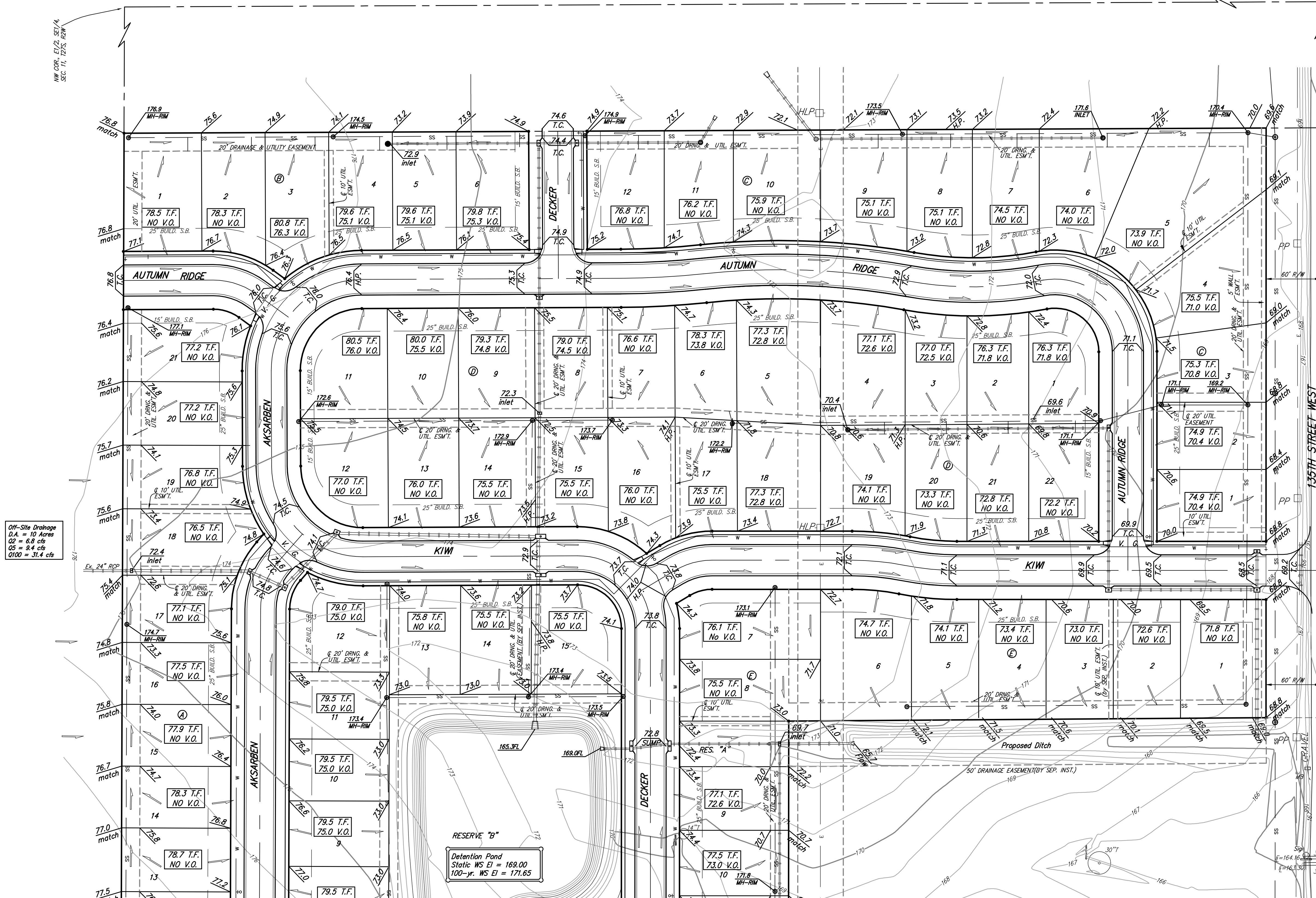
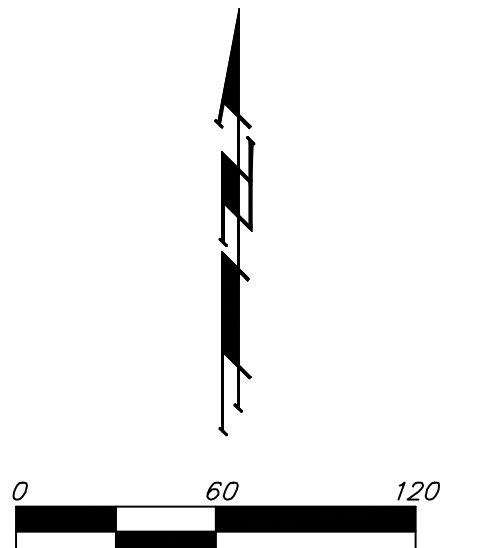


BENCHMARKS:

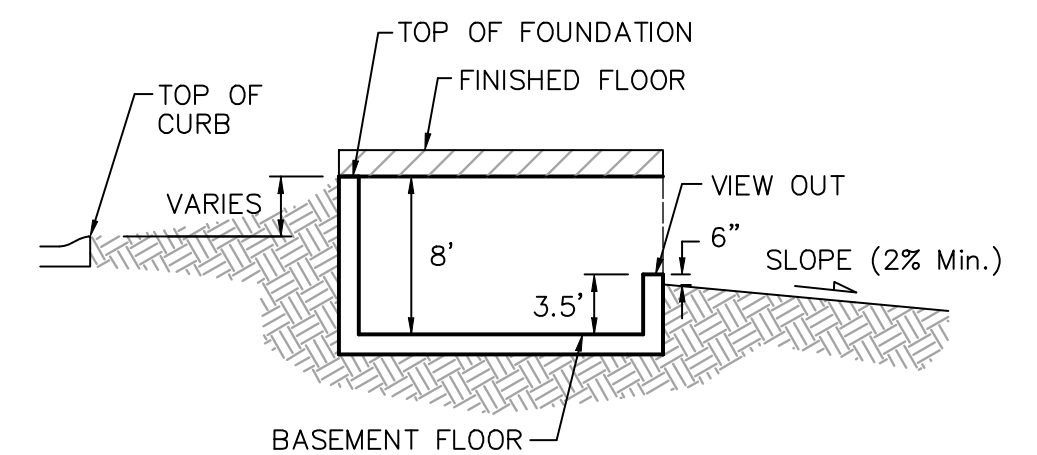
BM #1: G.O.W. disc at SW corner of intersection.
30.00'± S. of CL of 13th St. N. 35.00'±
W. of CL of 135th St. W.
Elev. = 168.25 City Datum

BM #2: Small RR spike in 4th HLP W. of
135th St. W. on south side of 13th St. N.
(N. face of HLP).
Elev. = 179.24 City Datum

BM #3: RR spike in Power Pole. 1321.65
W. of 135th St. W.
30' N. of 13th St. N.
Elev. = 178.45 City Datum



TYPICAL NON-VIEW OUT DETAIL
NO SCALE



TYPICAL VIEW OUT DETAIL
NO SCALE

NOTES:

Proposed Top of Foundation Elevations Are Shown On Plans. Contractor to Set Finished Floor Elevations.

All Street Elevations Shown on Plans Are for Top of Curb (Full-Height).

This Grading Plan is Designed with View-Outs. Elevations Shown as XXX V.O. indicate View-Out structure elevation.

Lot dimensions have been omitted on this plan, refer to the recorded plat for this information.

Add 100 to finish grade elevations indicated to achieve city datum elevation. Existing grade elevations are in city datum.

Off-Site Drainage
D.A. = 10 Acres
O2 = 6.8 cfs
O3 = 9.4 cfs
O100 = 31.4 cfs

Detention Pond
Static WS El = 169.00
100-yr. WS El = 171.65

MINIMUM BUILDING PAD ELEVATIONS FOR LOWEST OPENING TO THE STRUCTURES

LOT	BLOCK	ELEVATION CITY DATUM
2-11, 13-21	F	173.5

Rev. on Lot 4, Blk. C - T.F. Raised, P.V.O. TO V.O. - 03/09/07
Revision on Lot 7, Blk. E - T.F. and V.O. Changed - 05/19/08

Baughman Grading Plan
Wichita, Sedgewick County, Kansas

PROJECT NUMBER: 315 Ellis St. Wichita, KS 67211 P 316-262-7271 F 316-262-0149
ENGINEERING | SURVEYING | PLANNING | LANDSCAPE ARCHITECTURE

DESIGN: BLG	DRAWN: JAK
APPROVED: [Signature]	DATE: 9/06/05
REVISIONS:	
12.21.05 JAK	
2.15.06 JAK	
5.03.06 JAK	

SCALE: 1" = 60'
SHEET: 2 OF 2

F:\Grade\Copper Gate North\Grade.dwg