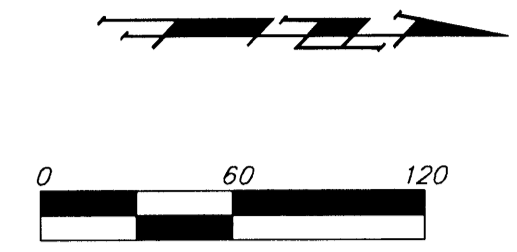


**BENCHMARKS:**

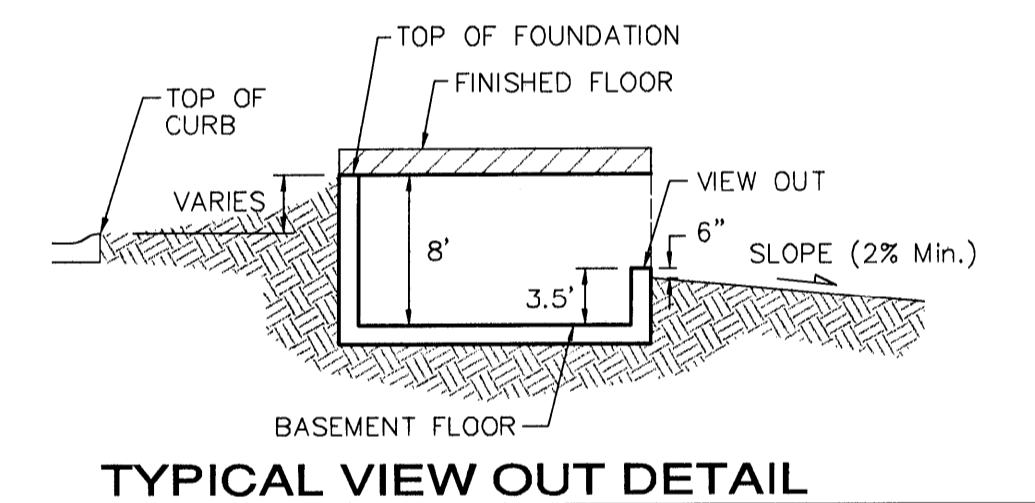
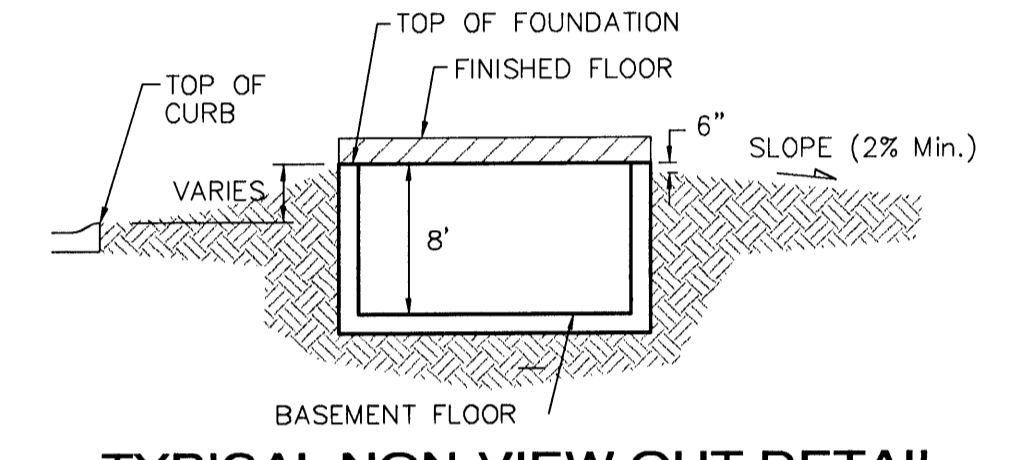
BM #1: C.O.W. disc at SW corner of intersection.  
 30.00'± S. of CL of 13th St. N. 35.00'±  
 W. of CL of 135th St. W.  
 Elev. = 168.25 City Datum

BM #2: Small RR spike in 4th HLP W. of  
 135th St. W. on south side of 13th St. N.  
 (N. face of HLP).  
 Elev. = 179.24 City Datum

BM #3: RR spike in Power Pole. 1321.65  
 W. of 135th St. W.  
 30' N. of 13th St. N.  
 Elev. = 178.45 City Datum



MINIMUM BUILDING PAD ELEVATIONS FOR LOWEST OPENING TO THE STRUCTURES		
LOT	BLOCK	ELEVATION CITY DATUM
2-11, 13-21	F	173.5



**NOTES:**  
 Proposed Top of Foundation Elevations Are Shown On Plans. Contractor to Set Finished Floor Elevations.

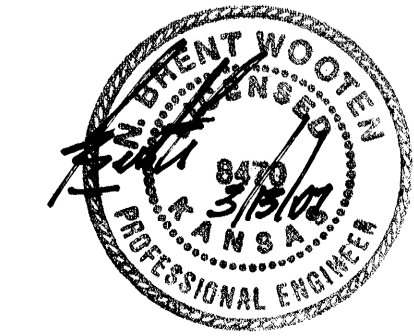
All Street Elevations Shown on Plans Are for Top of Curb (Full-Height).

This Grading Plan is Designed with View-Outs. Elevations Shown as XX.X V.O. indicate View-Out structure elevation.

Lot dimensions have been omitted on this plan, refer to the recorded plat for this information.

Add 100 to finish grade elevations indicated to achieve city datum elevation. Existing grade elevations are in city datum.

		<b>Copper Gate North Addition</b> <b>Grading Plan</b> Wichita, Sedgewick County, Kansas	
<small>Baughman Company, P.A. 315 E. 11th St. Wichita, KS 67211 P 316-262-7271 F 316-262-0149          ENGINEERING   SURVEYING   PLANNING   LANDSCAPE ARCHITECTURE</small>			
PROJECT NUMBER	DESIGN	DRAWN	APPROVED
REVISIONS:	JAK	JAK	DATE
12.21.05			9/06/05
2.15.06	JAK		SCALE
			1" = 60'
			SHEET
			<b>1 OF 2</b>



**BENCHMARKS:**

BM #1: C.O.W. disc at SW corner of intersection.  
30.00'± S. of CL of 13th St. N. 35.00'±  
W. of CL of 135th St. W.  
Elev. = 168.25 City Datum

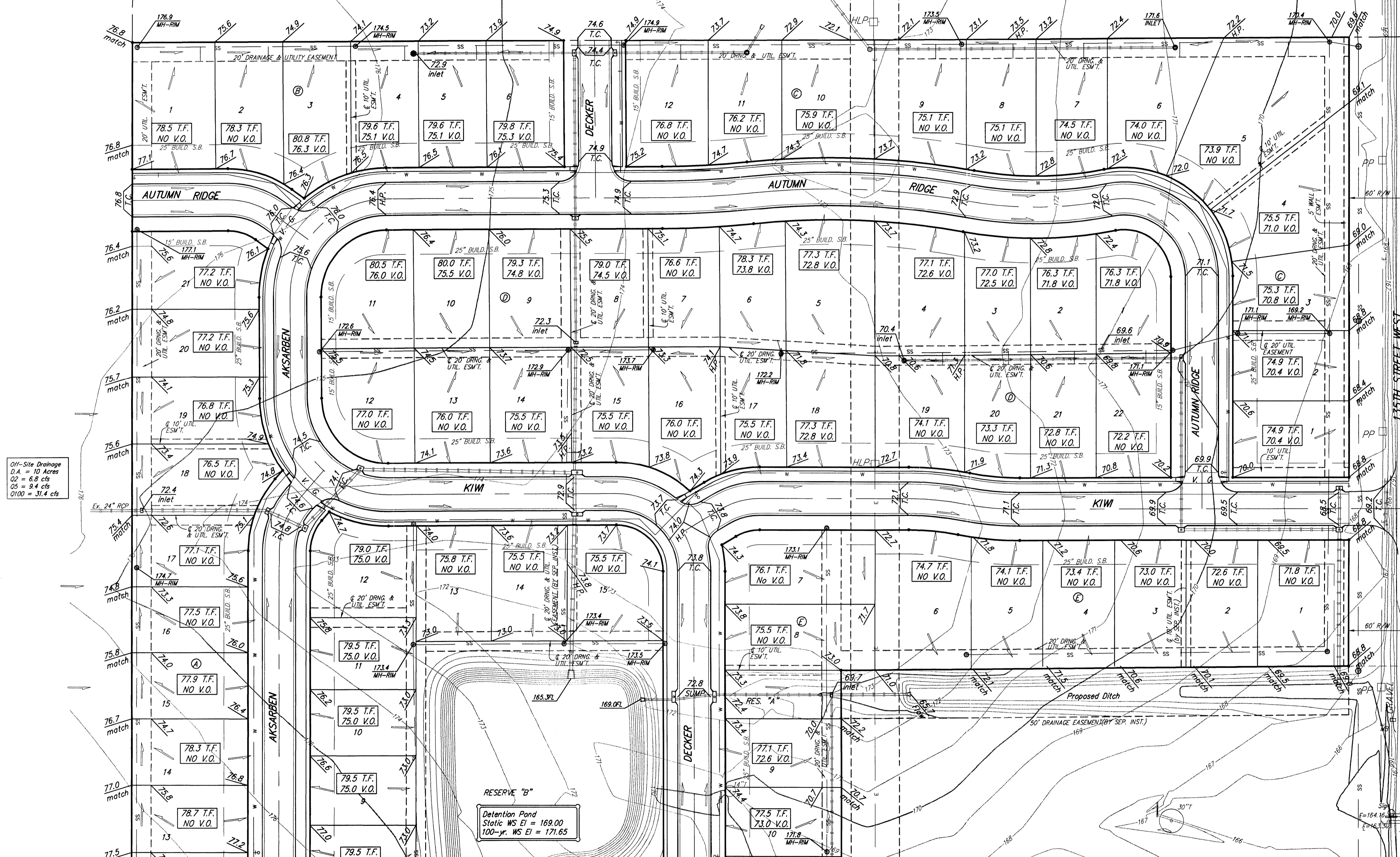
BM #2: Small RR spike in 4th HLP W. of 135th St. W. on south side of 13th St. N. (N. face of HLP).  
Elev. = 179.24 City Datum

BM #3: RR spike in Power Pole. 1321.65  
W. of 135th St. W.  
30' N. of 13th St. N.  
Elev. = 178.45 City Datum



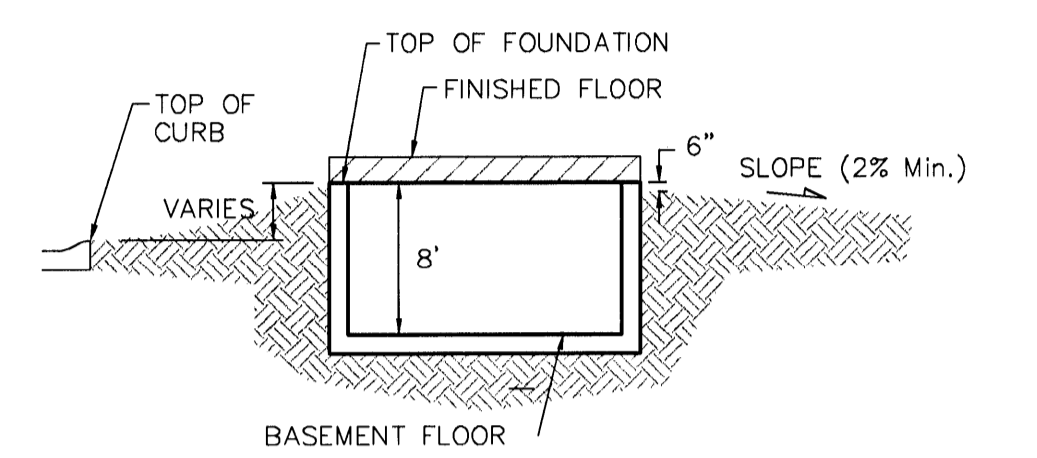
NW COR. PL 1/2, SE 1/4  
SEC. 11, T25, R2W

NE COR. SE 1/4  
SEC. 11, T25, R2W

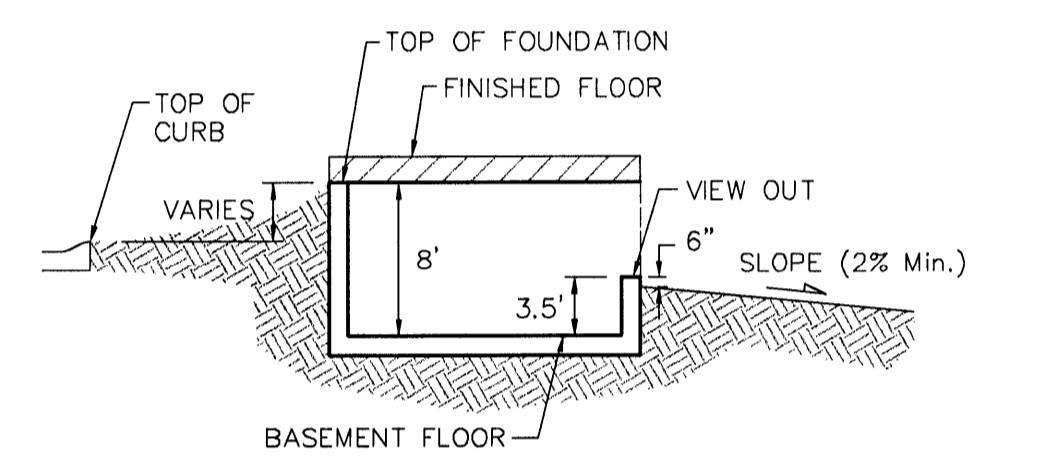


Off-Site Drainage  
D.A. = 10 Acres  
Q2 = 6.8 cfs  
Q5 = 9.4 cfs  
Q100 = 31.4 cfs

RESERVE "B"  
Detention Pond  
Static WS El = 169.00  
100-yr. WS El = 171.65



**TYPICAL NON-VIEW OUT DETAIL**  
NO SCALE



**TYPICAL VIEW OUT DETAIL**  
NO SCALE

**NOTES:**

Proposed Top of Foundation Elevations Are Shown On Plans. Contractor to Set Finished Floor Elevations.

All Street Elevations Shown on Plans Are for Top of Curb (Full-Height).

This Grading Plan is Designed with View-Outs. Elevations Shown as XXX.X V.O. indicate View-Out structure elevation.

Lot dimensions have been omitted on this plan, refer to the recorded plat for this information.

Add 100 to finish grade elevations indicated to achieve city datum elevation. Existing grade elevations are in city datum.



MINIMUM BUILDING PAD ELEVATIONS FOR LOWEST OPENING TO THE STRUCTURES

LOT	BLOCK	ELEVATION
2-11, 13-21	F	173.5

Rev. on Lot 4, Blk. C - T.F. Raised, P.V.O. TO V.O. - 03/9/07  
Revision on Lot 7, Blk. E - T.F. and V.O. Changed - 05/19/06

		Copper Gate North Addition <b>Grading Plan</b> Wichita, Sedgwick County, Kansas	
Baughman Company, P.A. 315 Ellis St. Wichita, KS 67211 P 316-262-7271 F 316-262-0149 ENGINEERING   SURVEYING   PLANNING   LANDSCAPE ARCHITECTURE			
PROJECT NUMBER	DESIGN	DRAWN	
12.21.05	BLG	JAK	
2.15.06	JAK	APPROVED	DATE
5.03.06	JAK		9/06/05
Lot 7, Block E		SCALE	
		1" = 60'	
		SHEET	
			<b>2 OF 2</b>

F:\Grade\Copper Gate North\Grade.dwg