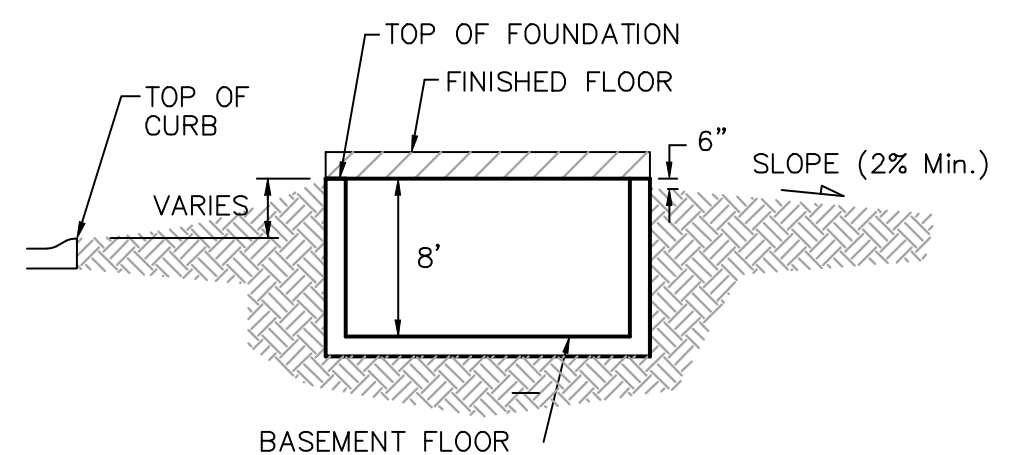
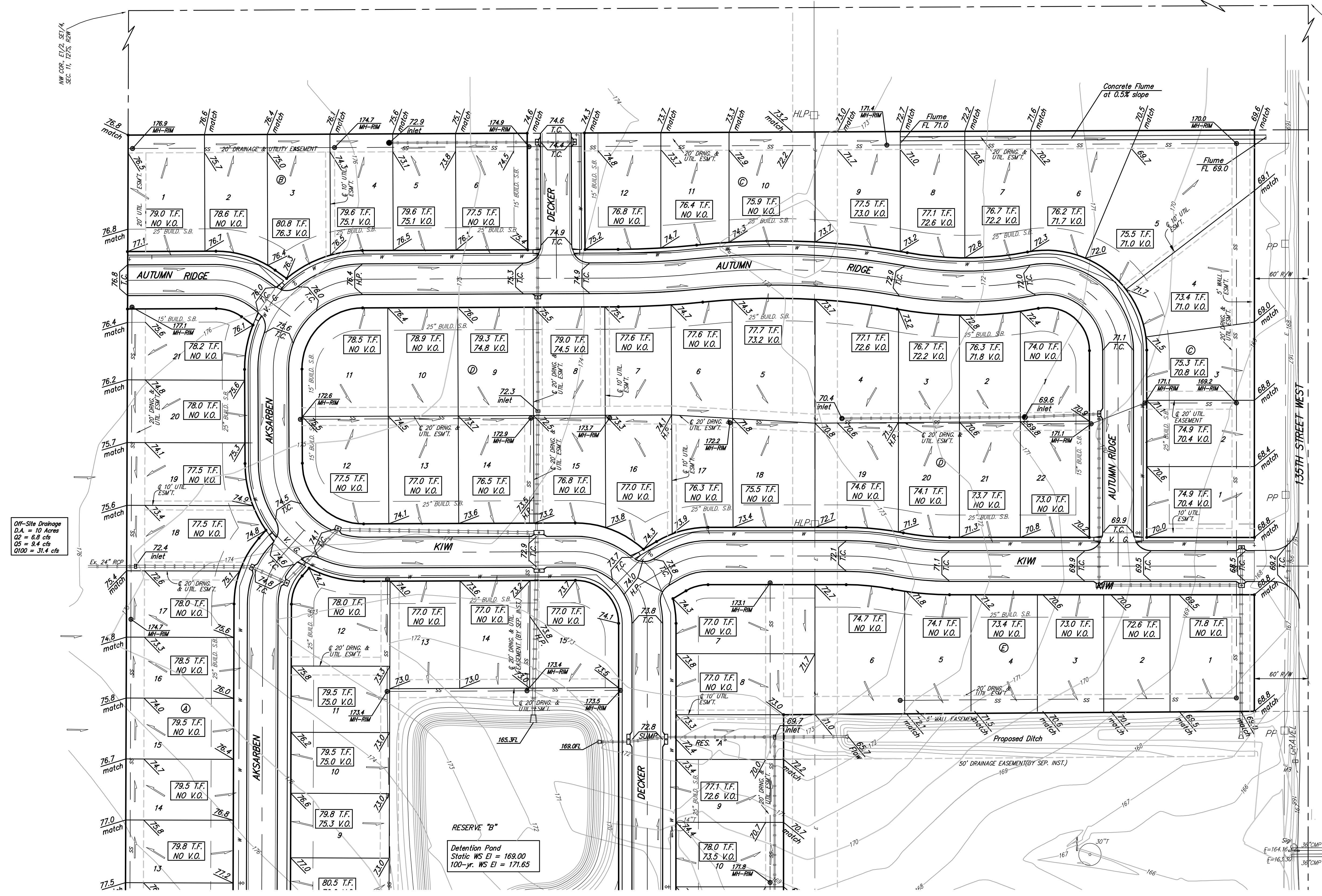
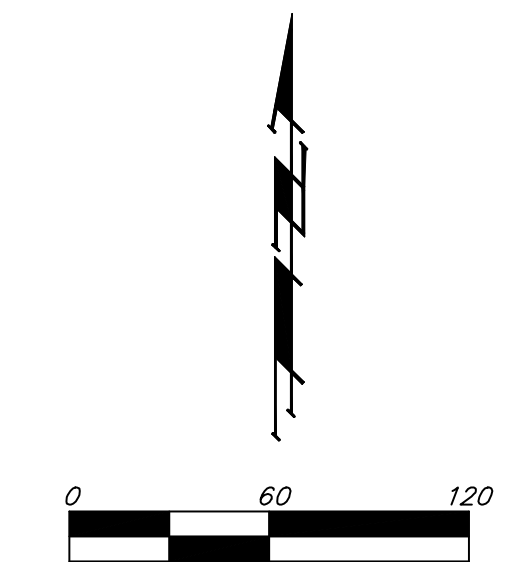


BENCHMARKS:

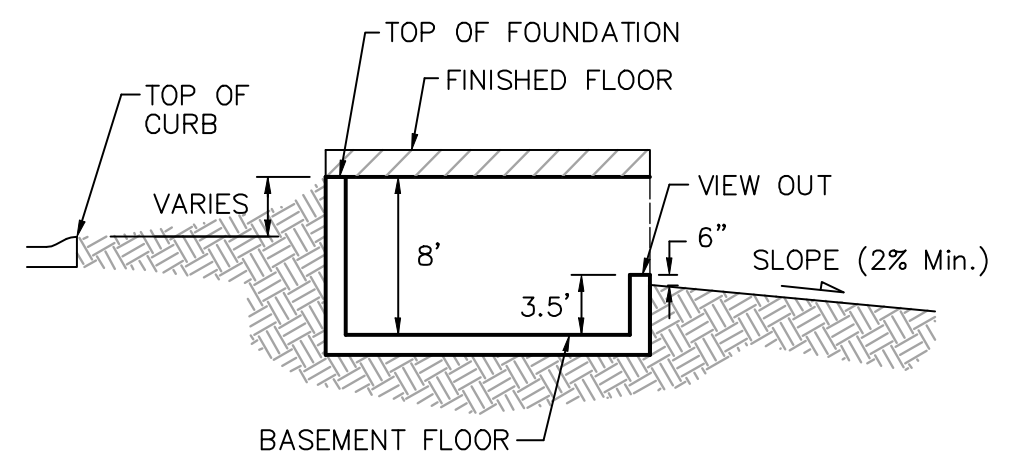
BM #1: C.O.W. disc at SW corner of intersection.
30.00'± S. of CL of 13th St. N. 35.00'±
W. of CL of 135th St. W.
Elev. = 168.25 City Datum

BM #2: Small RR spike in 4th HLP W. of
135th St. W. on south side of 13th St. N.
(N. face of HLP).
Elev. = 179.24 City Datum

BM #3: RR spike in Power Pole. 1321.65
W. of 135th St. W.
30' N. of 13th St. N.
Elev. = 178.45 City Datum



TYPICAL NON-VIEW OUT DETAIL
NO SCALE



TYPICAL VIEW OUT DETAIL
NO SCALE

NOTES:

Proposed Top of Foundation Elevations Are Shown On Plans. Contractor to Set Finished Floor Elevations.

All Street Elevations Shown on Plans Are for Top of Curb (Full-Height).

This Grading Plan is Designed with View-Outs. Elevations Shown as XXX V.O. indicate View-Out structure elevation.

Lot dimensions have been omitted on this plan, refer to the recorded plat for this information.

Add 100 to finish grade elevations indicated to achieve city datum elevation. Existing grade elevations are in city datum.

Off-Site Drainage
D.A. = 10 Acres
Q2 = 6.8 cfs
Q5 = 2.4 cfs
Q100 = 31.6 cfs

MINIMUM BUILDING PAD ELEVATIONS FOR LOWEST OPENING TO THE STRUCTURES

LOT	BLOCK	ELEVATION CITY DATUM
2-11, 13-21	F	173.5

Baughman Copper Gate North Addition
Grading Plan
Wichita, Sedgwick County, Kansas

Baughman Company, P.A. 315 Ellis St. Wichita, KS 67211 P 316-262-7271 F 316-262-0149
ENGINEERING | SURVEYING | PLANNING | LANDSCAPE ARCHITECTURE

PROJECT NUMBER	DESIGN	DRAWN
	BLG	JAK
REVISIONS:	APPROVED	DATE
		9/06/05
SCALE 1" = 60'		
SHEET 2 OF 2		

F:\Grade\Copper Gate North\Grade.dwg