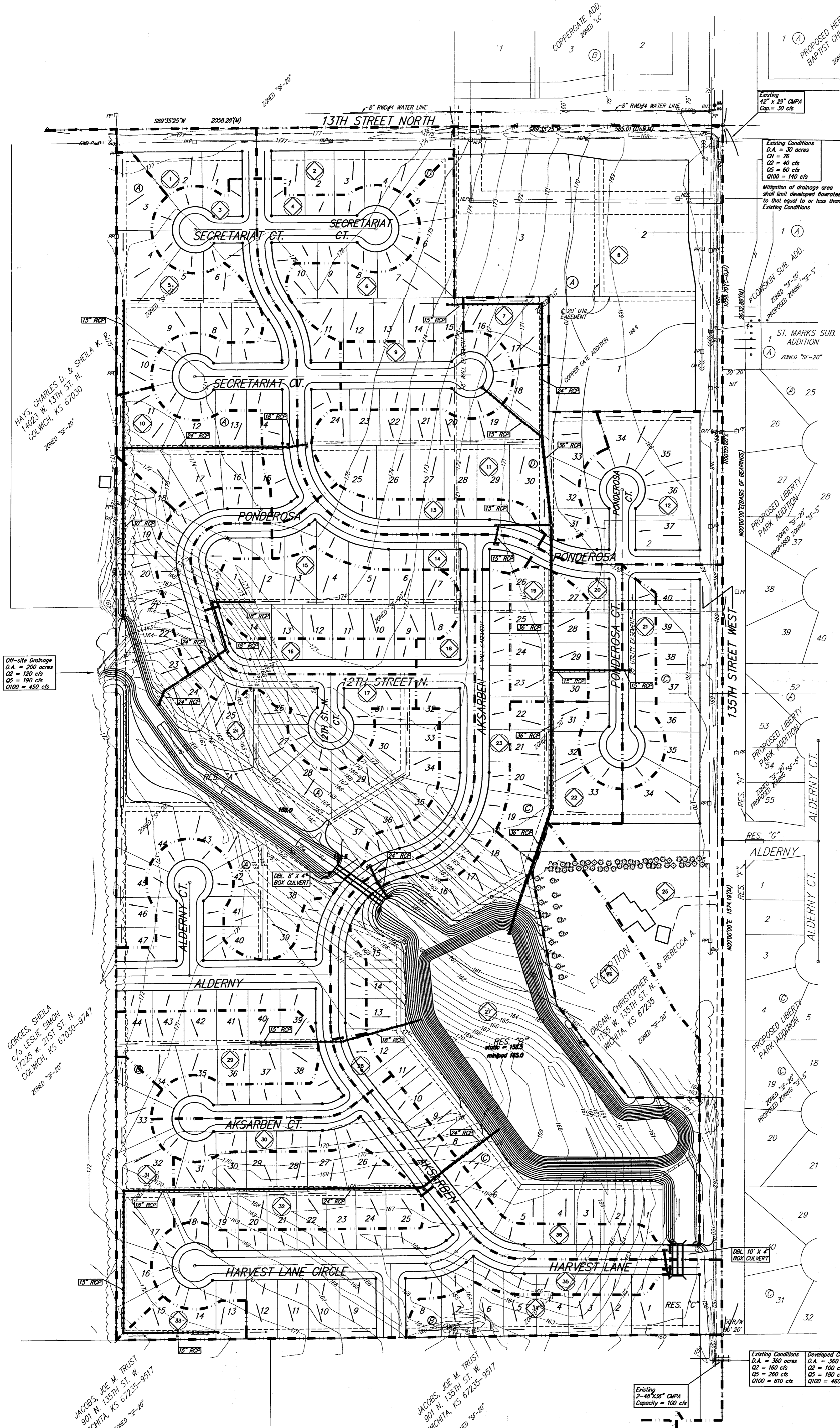
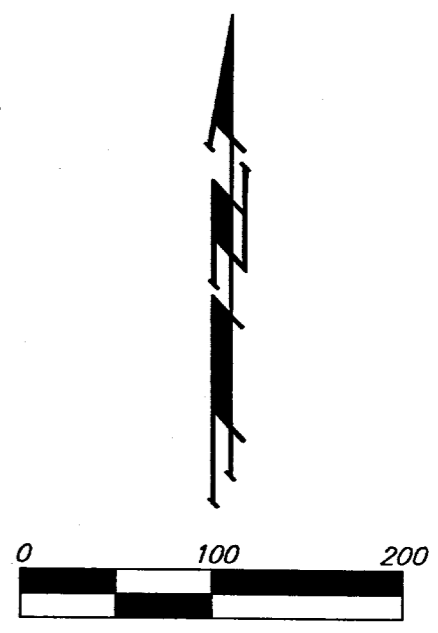


DRAINAGE PLAN COPPER GATE ESTATES WICHITA, SEDGWICK COUNTY, KANSAS



Existing
42" x 29" CMPA
Cap. = 30 cfs

Existing Conditions
D.A. = 30 acres
Q2 = 40 cfs
Q5 = 60 cfs
Q100 = 140 cfs

Mitigation of drainage area
shall limit developed flowrates
to that equal to or less than
Existing Conditions

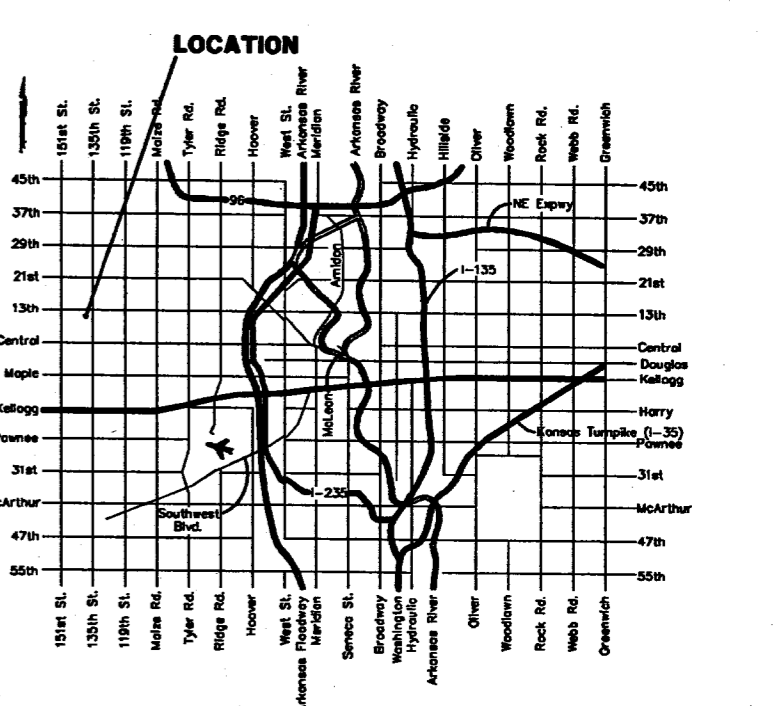
Basin ID	Basin Area (Acres)	Rational Method Coefficients			Peak Flowrate (cfs)		
		2-yr	5-yr	100-yr	2-yr	5-yr	100-yr
1	0.8	0.49	0.49	0.67	1.4	1.8	4.0
2	1.3	0.49	0.49	0.67	2.3	2.9	6.4
3	2.8	0.49	0.49	0.67	4.6	5.8	12.8
4	2	0.49	0.49	0.67	3.5	4.5	9.8
5	1.7	0.49	0.49	0.67	3.0	3.8	8.4
6	1.7	0.49	0.49	0.67	3.0	3.8	8.4
7	0.5	0.49	0.49	0.67	0.9	1.1	2.5
8	1.2	0.49	0.49	0.67	2.4	2.8	6.8
9	1.3	0.49	0.49	0.67	2.5	2.9	7.0
10	1.3	0.49	0.49	0.67	2.5	2.9	7.0
11	3	0.49	0.49	0.67	5.3	6.7	15.8
12	2.3	0.49	0.49	0.67	4.1	5.1	11.4
13	0.8	0.49	0.49	0.67	1.4	1.8	4.0
14	1	0.49	0.49	0.67	1.8	2.2	4.9
15	1.9	0.49	0.49	0.67	3.3	4.2	9.4
16	1.2	0.49	0.49	0.67	2.1	2.7	5.9
17	2.2	0.49	0.49	0.67	3.0	4.0	10.0
18	4.9	0.49	0.49	0.67	8.6	10.8	24.2
19	1.1	0.49	0.49	0.67	1.8	2.3	5.4
20	1	0.49	0.49	0.67	1.8	2.2	4.8
21	0.8	0.49	0.49	0.67	1.4	1.8	4.0
22	1.8	0.49	0.49	0.67	3.2	4.0	8.8
23	1.2	0.49	0.49	0.67	2.1	2.7	5.9
24	5	0.49	0.49	0.67	8.8	11.2	24.7
25	2.4	0.49	0.49	0.67	4.2	5.4	11.9
26	0.2	0.72	0.74	0.83	2.9	2.7	10.2
27	0.2	0.49	0.49	0.67	0.4	0.4	1.0
28	1.5	0.49	0.49	0.67	2.6	3.4	7.4
29	1.1	0.49	0.49	0.67	1.9	2.5	6.4
30	1.2	0.49	0.49	0.67	2.1	2.7	5.9
31	1.9	0.49	0.49	0.67	3.3	4.2	9.4
32	0.4	0.49	0.49	0.67	0.7	0.9	2.0
33	1.8	0.49	0.49	0.67	3.2	4.0	8.8
34	4	0.49	0.49	0.67	7.0	8.9	19.8
35	1.4	0.49	0.49	0.67	2.5	3.1	6.8

Off-site Drainage
D.A. = 200 acres
Q2 = 120 cfs
Q5 = 190 cfs
Q100 = 450 cfs

Existing Conditions
D.A. = 360 acres
Q2 = 160 cfs
Q5 = 260 cfs
Q100 = 610 cfs

Developed Conditions
D.A. = 360 acres
Q2 = 100 cfs
Q5 = 180 cfs
Q100 = 460 cfs

Existing
2-48" x 36" CMPA
Capacity = 100 cfs



HAYS, CHARLES D. & SHEILA K. CURR.
14023 W. 13TH ST. N.
COLWICH, KS 67030
ZONED "SF-20"

GORGES, SHEILA
c/o LESLIE SIMON
17225 W. 21ST ST. N.
COLWICH, KS 67030-9747
ZONED "SF-20"

JACOBS, JOE M. TRUST
901 N. 135TH ST. W.
WICHITA, KS 67235-9517
ZONED "SF-20"

JACOBS, JOE M. TRUST
901 N. 135TH ST. W.
WICHITA, KS 67235-9517
ZONED "SF-20"