

Drainage Plan

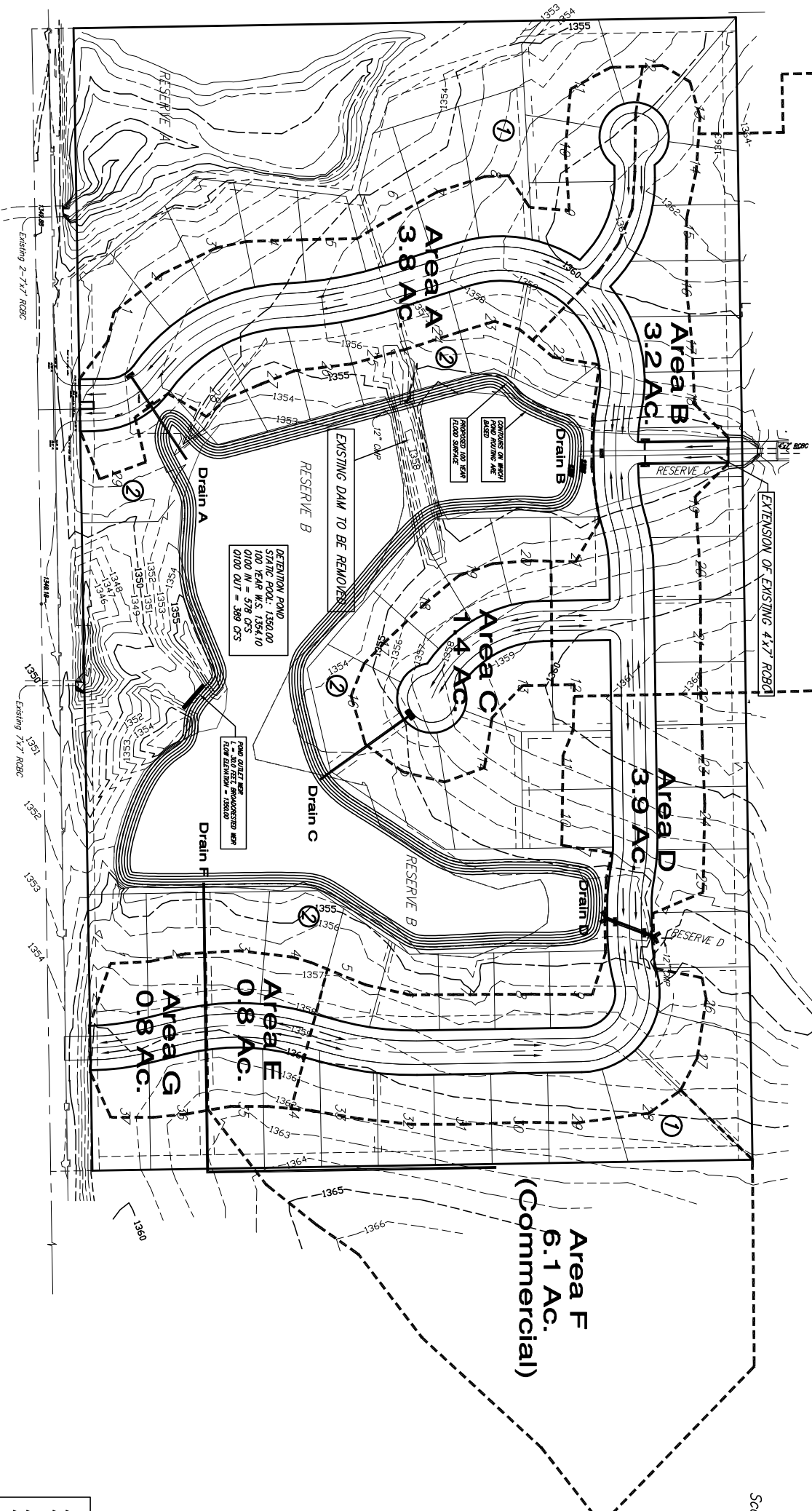
CENTRAL DEVELOPMENT

Wichita, Sedgwick County, Kansas

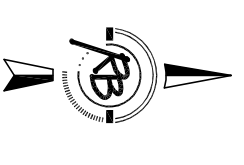
Area Offsite West
424 Acres

Balthrop Addition
61.4 Acres

K-96 Drainage Area
57.6 Acres



MINIMUM PAD ELEVATIONS FOR LOTS ADJACENT TO RESERVE B SHALL BE 1356.0 M.L.S.
MINIMUM PAD ELEVATIONS FOR LOTS ADJACENT TO RESERVE A SHALL BE 1352.0
MINIMUM PAD ELEVATIONS FOR LOTS ADJACENT TO RESERVE D SHALL BE 1358.0



Drainage Plan CENTRAL DEVELOPMENT Wichita, Sedgwick County, Kansas			
Ruggles & Bohm, P.A. Engineering, Surveying, Land Planning		DRAWN BY	SHEET OF
924 North Main Wichita, Kansas 67203(316) 264-4821 fax www.rbkansas.com E-mail: info@rbkansas.com		316) 264-8008 (316) 264-4821 fax info@rbkansas.com	17/20
DRAWING FILE	PROJECT NUMBER	DATE	DATE