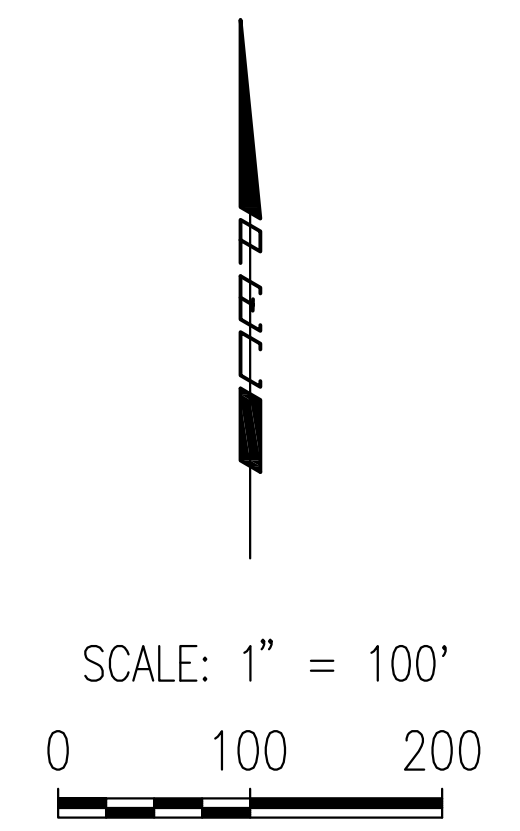
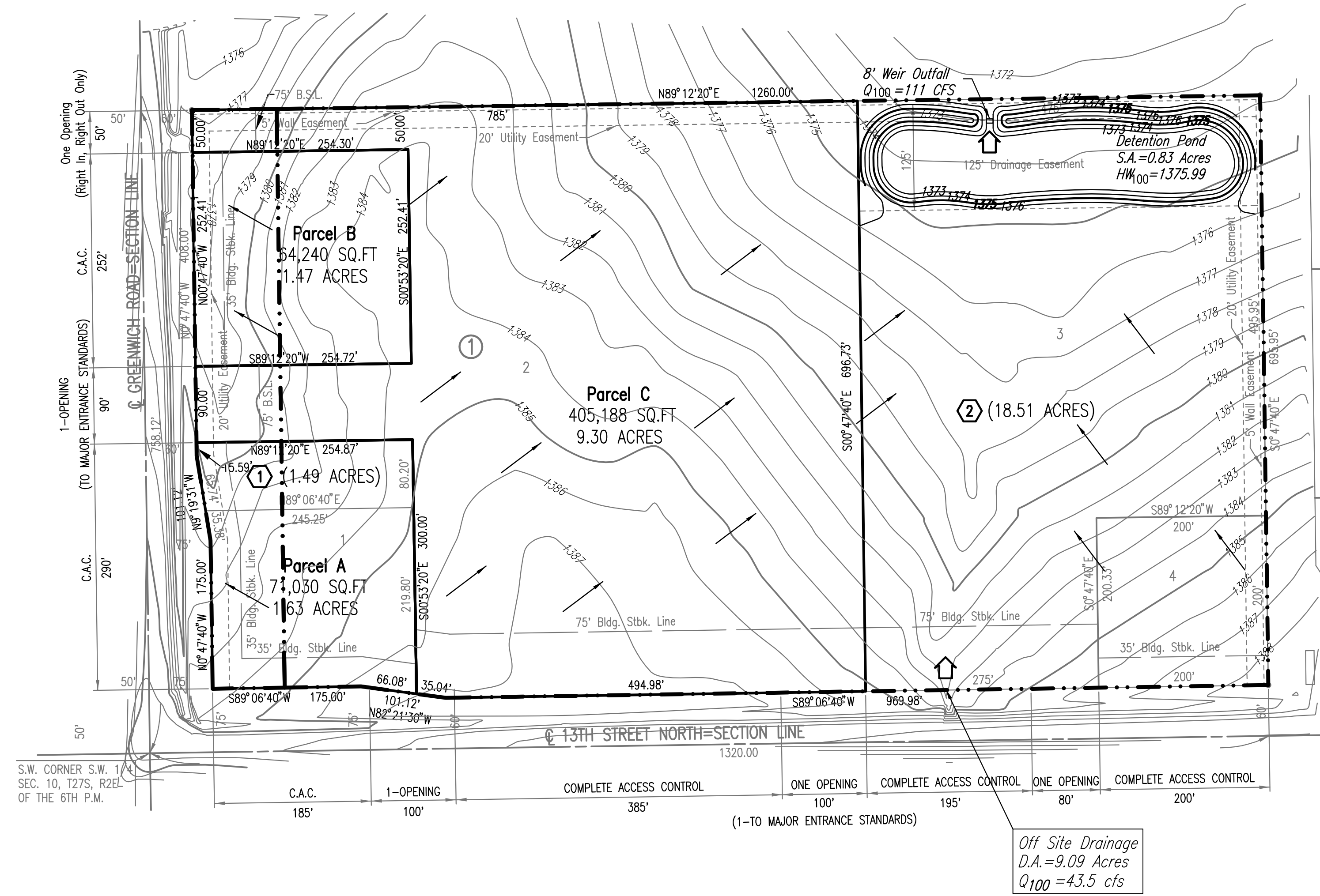


# DILLON 12TH ADDITION REVISED DRAINAGE PLAN

## LOT SPLIT

LOT 1 AND 2, BLOCK 1, DILLON 12TH ADDITION TO WICHITA, SEDGWICK COUNTY, KANSAS.



- LEGEND**
- BASIN IDENTIFIER
  - MAJOR BASIN BOUNDARY
  - MAJOR STORM WATER OVERFLOW (Q100)
  - MINOR STORM WATER FLOW (Q2)

Sent 04-24-2005 8:35:32 AM by BMM  
 Plot Scale 1:100 04-24-2006 8:42:29 AM by BMM  
 Q:\2003\03242\01A\Dillon\_12th\_Drainage\_Plan

No.	Revision	By	Date
<b>DRAINAGE PLAN</b> (DILLON 12TH ADDITION LOT SPLIT)			
<b>Professional Engineering Consultants, P.A.</b> 303 S. TOPEKA • WICHITA, KANSAS 67202 316-262-2691 • FAX 316-262-3003			
Designed by	BMM	Job No.	
Drawn by	BMM	Date	November 2005
			Sht. 1 of 1