

SCHAEFER JOHNSON COX FREY
ARCHITECTURE
Empire Center
287 N. Broadway
Wichita, KS 67202
Tel: 316.844.0111
Fax: 316.844.8888
architect@sjcf.com

BAUGHMAN COMPANY, P.A.
CIVIL ENGINEERS
DUDLEY WILLIAMS & ASSOCIATES, P.A.
STRUCTURAL ENGINEERS
MIDWEST ENGINEERING, INC.
MECHANICAL ENGINEERS
JOHNSON ENGINEERING
ELECTRICAL ENGINEERS

EARHART ENVIRONMENTAL MAGNET
ELEMENTARY SCHOOL
UNIFIED SCHOOL DISTRICT #259
4401 N. ARKANSAS AVENUE
WICHITA, KS 67204

5/2009
Schaefer Johnson Cox Frey & Associates, P.A.
All Rights Reserved
These drawings and their contents, including, but not limited to, all concepts, designs, & ideas are the exclusive property of Schaefer Johnson Cox Frey (SJCF), and may not be used or reproduced in any way without the express consent of SJCF.

Revisions
5/22/07
Project Number
SJCF 2907.00
USD259 07-42547
Date
23 MARCH 2007
SITE GRADING PLAN
1" = 40'-0"
C22.2

BENCHMARK

T₁ Cut on Crosswalk Signal Pole Base 6.4' N and 25.3' E of the Ne Corner SE 1/4, NW 1/4 Section 29-26S-1E
Elev. = 1323.41

LEGAL DESCRIPTION

Lot 1, Block A, Earhart Elementary School Addition, Wichita, Sedgwick County, Kansas.

SITE INFORMATION

Total Area: ±883,866.76 sq. ft. (15.7 acres)
Imperious Area: ±176,967 sq. ft. (4.06 acres)
Building Area: 57,207 sq. ft.
Parking Provided: 60 Spaces, plus 3 Accessible Stalls (Including 2 Van Accessible)

GRADING NOTES

- Contractor shall be required to provide notice to Kansas One Call at 687-2470 a minimum of two (2) working days prior to any excavation or work adjacent to utilities.
- The Contractor must notify the following in case of an emergency:
 - Kansas Gas Service (Gas).....1-888-482-4850
 - Aquila Energy (Gas).....1-800-303-0377
 - Westar Energy (Electric).....383-8650
 - Cox Communications (Cablevision).....262-4270
 - AT&T (Phone).....268-2759
 - City of Wichita Water Dept. (Water).....268-4563
 - City of Wichita Sewer Maint. (San. Sewer).....268-4908
 - City of Wichita Storm Sewer Maint. (Storm Sewer).....268-4090
 - City of Wich Traffic Maint. (Traf. Control).....268-4034
 - Conoco Pipeline Co. (Petroleum).....1-800-231-2551
 - Williams Pipeline Co. (Petroleum).....529-6600
 - Phillips Pipeline Co. (Petroleum).....1-800-324-9686
- Existing utilities and their locations, as shown on the plans, represent the best information obtainable for design. Location information has been obtained from the various utility companies and is either from company record drawings or company provided field locations. The Contractor will be required to work around existing utilities which do not conflict with proposed construction.
- Traffic affected by the construction on this project shall be handled in accordance with the latest edition of the Local Manual on Uniform Traffic Control Devices.
- The Contractor shall verify all utility locations prior to construction of this project.
- Refer to Landscape Plan for Treatment of All Disturbed Areas.
- Signaling and striping shall be installed in accordance with Local City Specifications and Codes. Striping shall be painted markings in conformance with the latest edition of the Standard Specifications for State Road and Bridge Construction by the Kansas Department of Transportation.
- Paved Lot to be constructed with Paving as shown. Subgrade to be compacted to 98% Standard Proctor Density and treated with 4 to 6 percent lime or 14 to 16 percent class "C" fly ash. Refer to pavement details to verify depths and Paving type.
- The Contractor shall notify adjacent landowners prior to proceeding with any construction work on landowner's property.
- Handicap accessible ramps shall be constructed at both drive approach locations. The ramps shall be constructed in accordance with ADA standards and Local City Specifications.
- Cross-Slopes on sidewalks around building shall not exceed 1/4" per foot (or 2%). Notify Landscape Architect of any discrepancies prior to forming of walks.

COORDINATE THE RELOCATION OF MEMORIAL BRICKS WITH SCHOOL

CONTRACTOR SHALL ERECT CONSTRUCTION FENCE AT THE DRIP LINE OF TREES TO REMAIN, AS SHOWN. NO GRADING OR STORAGE OF MATERIALS SHALL OCCUR WITHIN THESE LIMITS

GRADE OPEN AREA FOR SHALLOW BIO-RETENTION PER DETAIL 5/C22.2

CONTRACTOR SHALL ERECT CONSTRUCTION FENCE AT THE DRIP LINE OF TREES TO REMAIN, AS SHOWN. NO GRADING OR STORAGE OF MATERIALS SHALL OCCUR WITHIN THESE LIMITS

CONSTRUCT TYPICAL 6" CURB AND GUTTER WHERE SHOWN PER DETAIL 3 & 4 THIS SHEET

SAW CUT AND REMOVE EXISTING CURB AND GUTTER AND PAVEMENT AND INSTALL 8" CONCRETE ENTRY PER CITY STANDARDS. CURB AND GUTTER TO BE REMOVED TO NEAREST JOINT IF WITH IN (3) FEET FROM EDGE OF NEW ENTRY. MATCH EXISTING PAVEMENT GRADES.

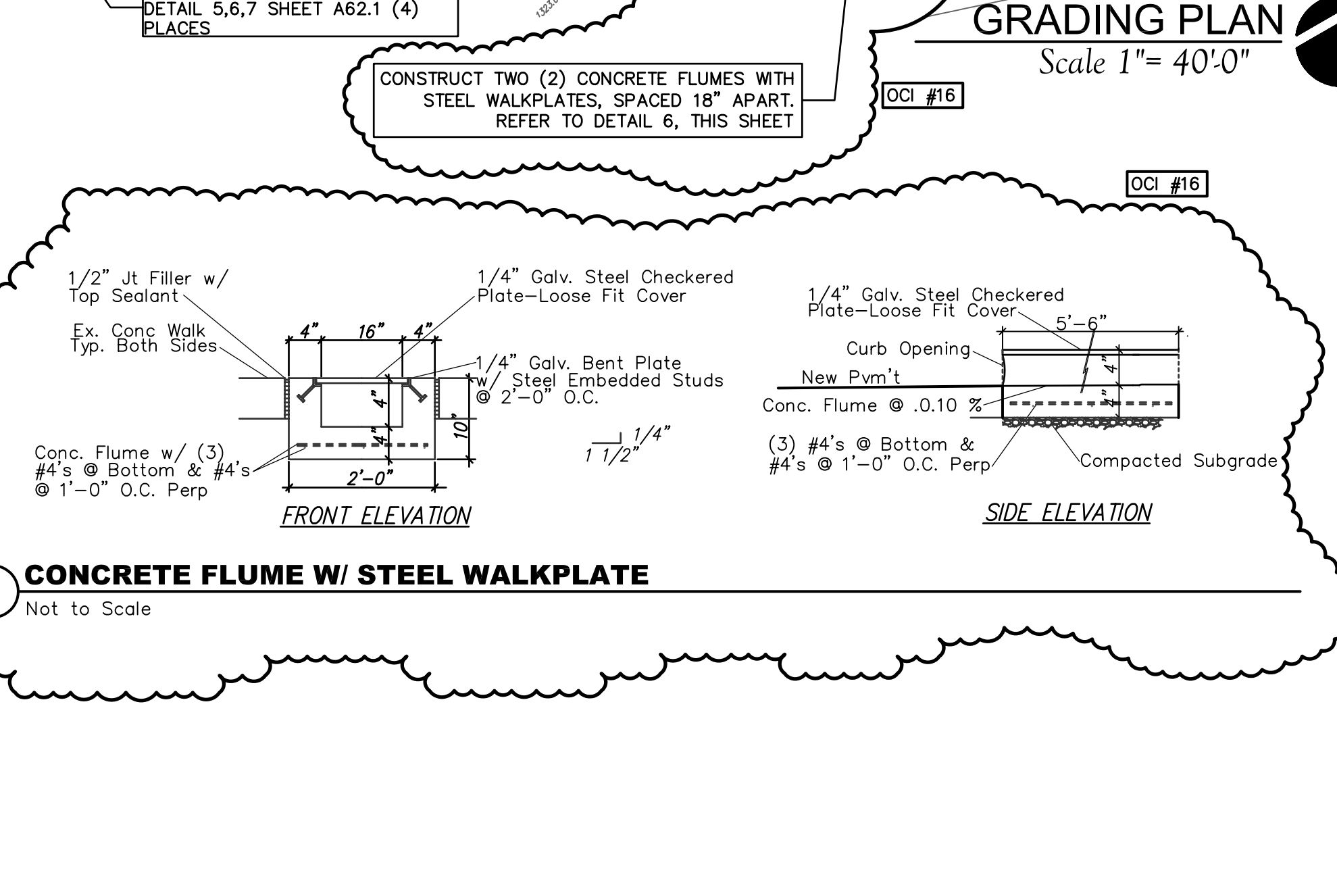
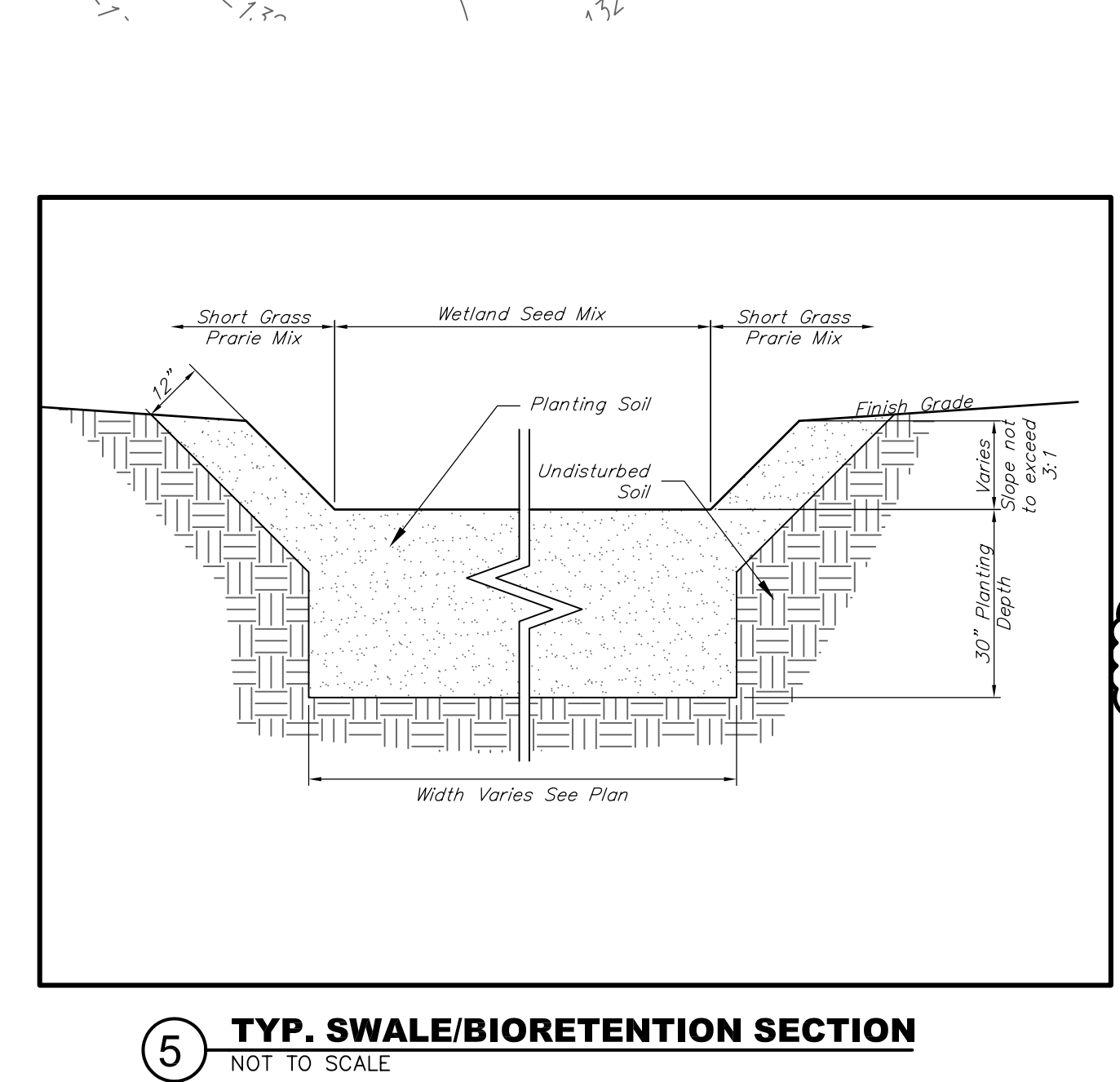
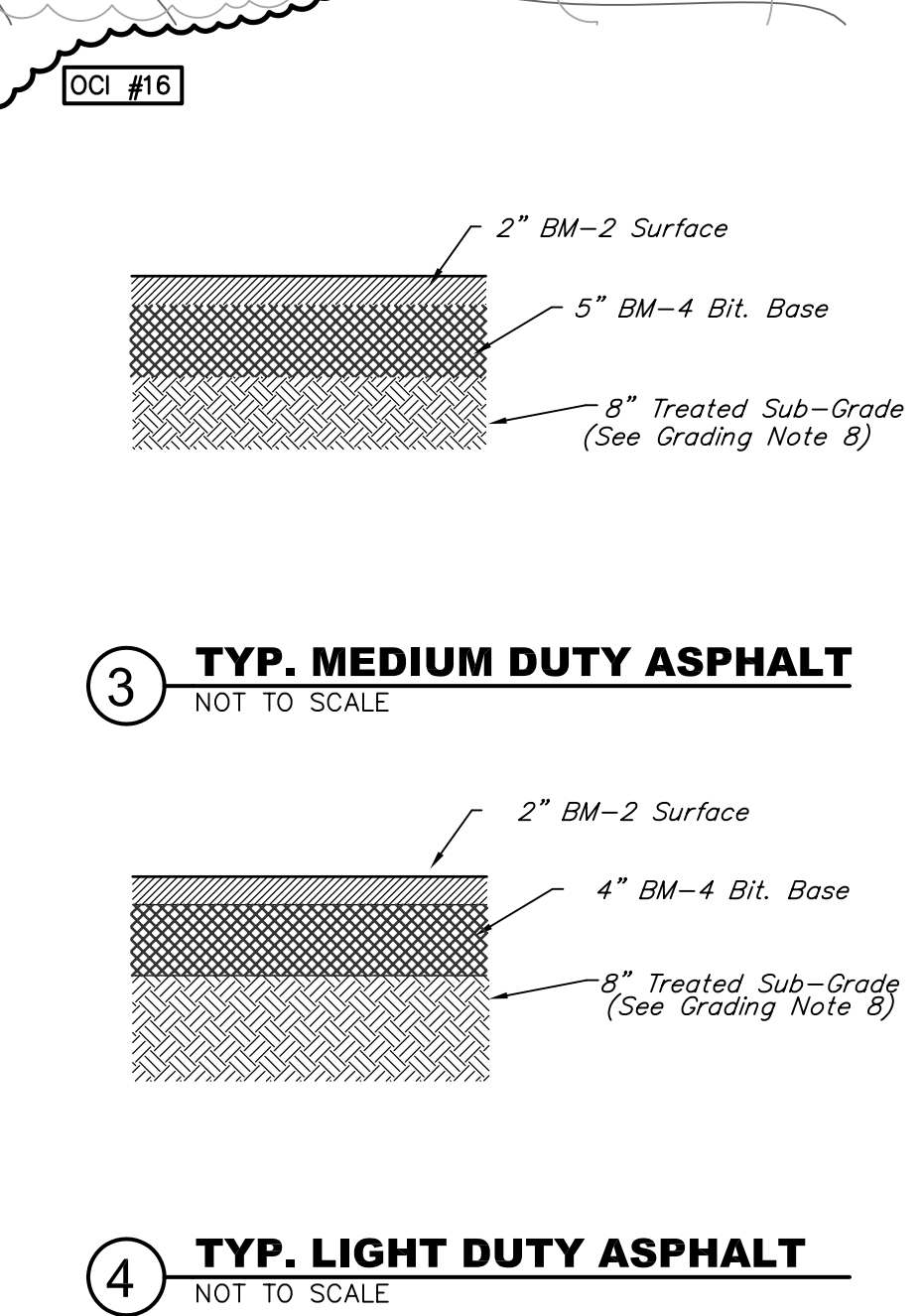
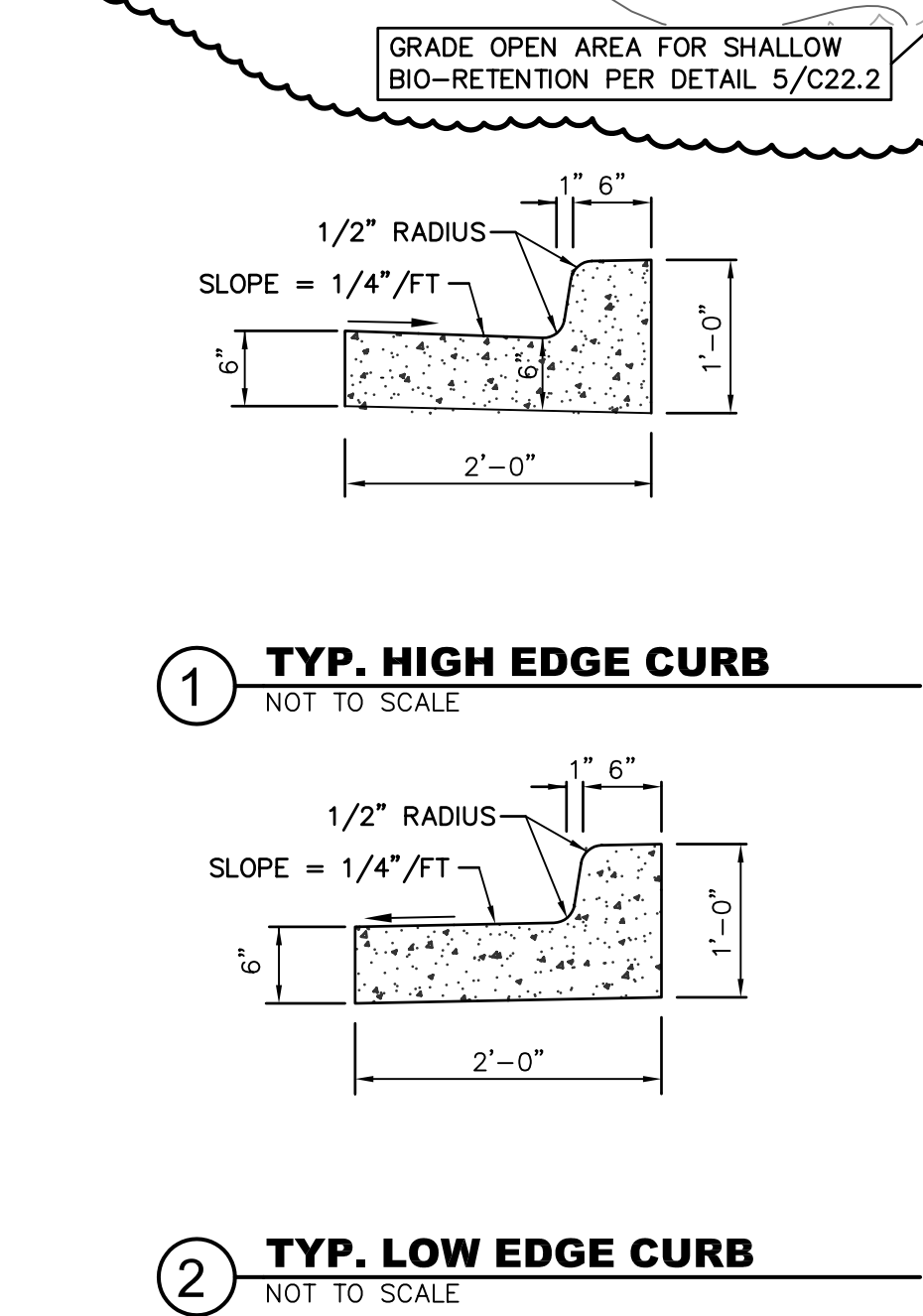
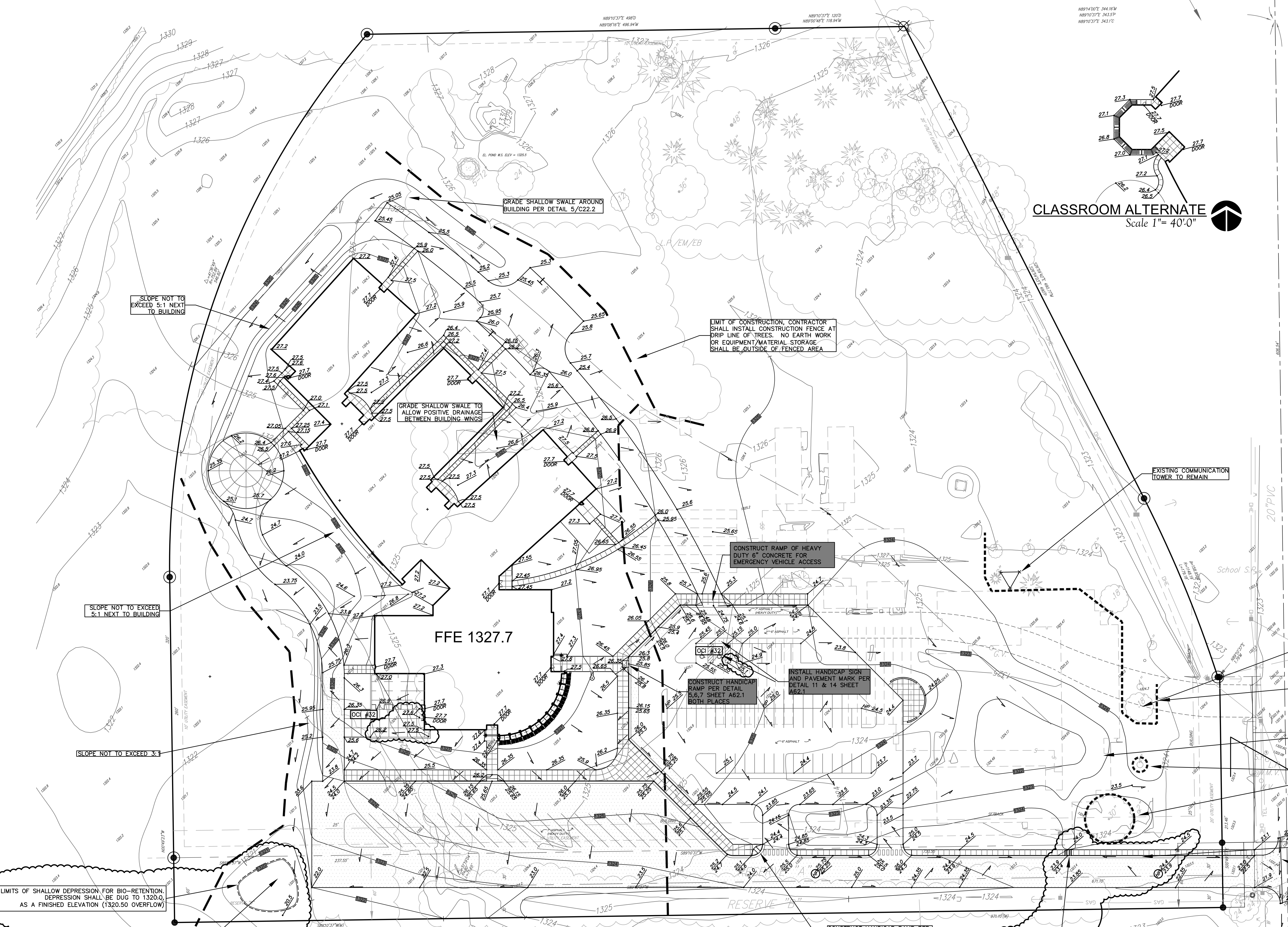
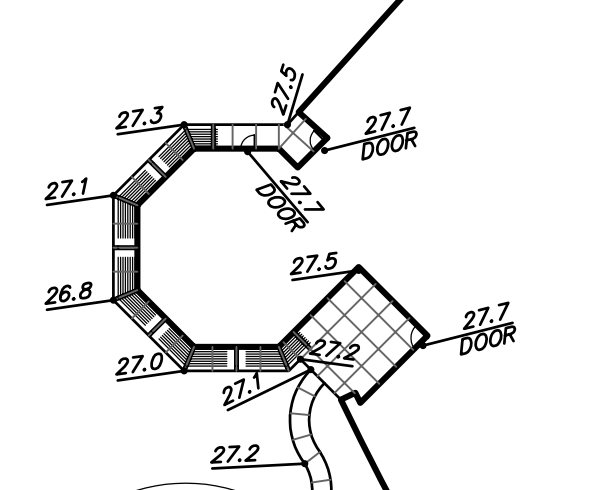
NOTE: THE VARIOUS SEEDING AREAS ARE DENOED ON EROSION CONTROL PLAN (C22.3)

Seed and Planting Note:

- All disturbed areas labeled "Short grass Prairie Mix" within the denoted seeding limits shall be seeded with the Short grass Prairie Mix at a rate of 80# PLS/Acre, available from Sharp Bros. Seed Company (Healy, KS), 1-800-462-8483.
 - Short grass Prairie Mix Seed Ratio
 - 40% Blue Grama
 - 60% Sharp's Improved Buffalograss-KN03
 - 35% Sideoats Grama
- All disturbed areas labeled "Wetland Seed Mix" within the denoted seeding limits shall be seeded with a custom mix at a rate of 80# PLS/Acre, available from Sharp Bros. Seed Company (Healy, KS), 1-800-462-8483.
 - Wetland Seed Mix Seed Ratio
 - 60% Wetland Seed mix
 - 15% Knee- High Mix
 - 25% Short grass Prairie Mix
- This area shall be fine graded and the surface shall be free of sticks, small stones, and other extraneous materials.
- Planting Soil Mix in Swale and Bioretention Areas shall consist of the following mix:
 - 50% Construction Sand
 - 30% Clean Topsoil (Mo. 5% Clay)
 - 20% Compost (avail. from Wood Recyclers and Compost Center, or other approved source)
- Seeding areas shall be prepared for planting with common agricultural techniques (i.e., soil shall be prepared before planting with proper equipment).
- All seed shall be distributed with an acceptable drill intended for such operations or other equipment approved by the landscape architect. Seeding depth shall be 1/2".
- All disturbed areas shall be immediately mulched with prairie hay at 2 tons/ acres. Anchor mulch by crimping into topsoil with suitable mechanical equipment.

CLASSROOM ALTERNATE

Scale 1" = 40'-0"



GRADING PLAN
Scale 1" = 40'-0"