

# EARHART ELEMENTARY SCHOOL

## WICHITA, SEDGWICK COUNTY, KANSAS

**NORTH OFFSITE**  
 D.A. = 6.0 acres  
 'C' = 0.62  
 Tc = 0.25 hrs  
 Qs = 17 cfs  
 Q100 = 27 cfs

**NORTH BASIN**  
 D.A. = 4.8 acres  
 'C' = 0.66  
 Tc = 0.25 hrs  
 Qs = 15 cfs  
 Q100 = 23 cfs

**SOUTH BASIN**  
 D.A. = 9.6 acres  
 'C' = 0.66  
 Tc = 0.25 hrs  
 Qs = 29 cfs  
 Q100 = 47 cfs

NOTE: Existing conditions = proposed conditions.  
 The existing school will be removed and a new facility will be constructed to the west of the existing structure.  
 This area protected from flooding by a levee to the west. The site drains to the south along the levee to an existing 36" CMP with flapgate.  
 Site layout is preliminary and subject to change.

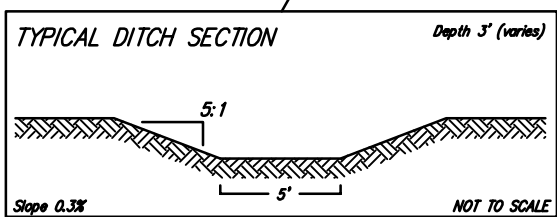
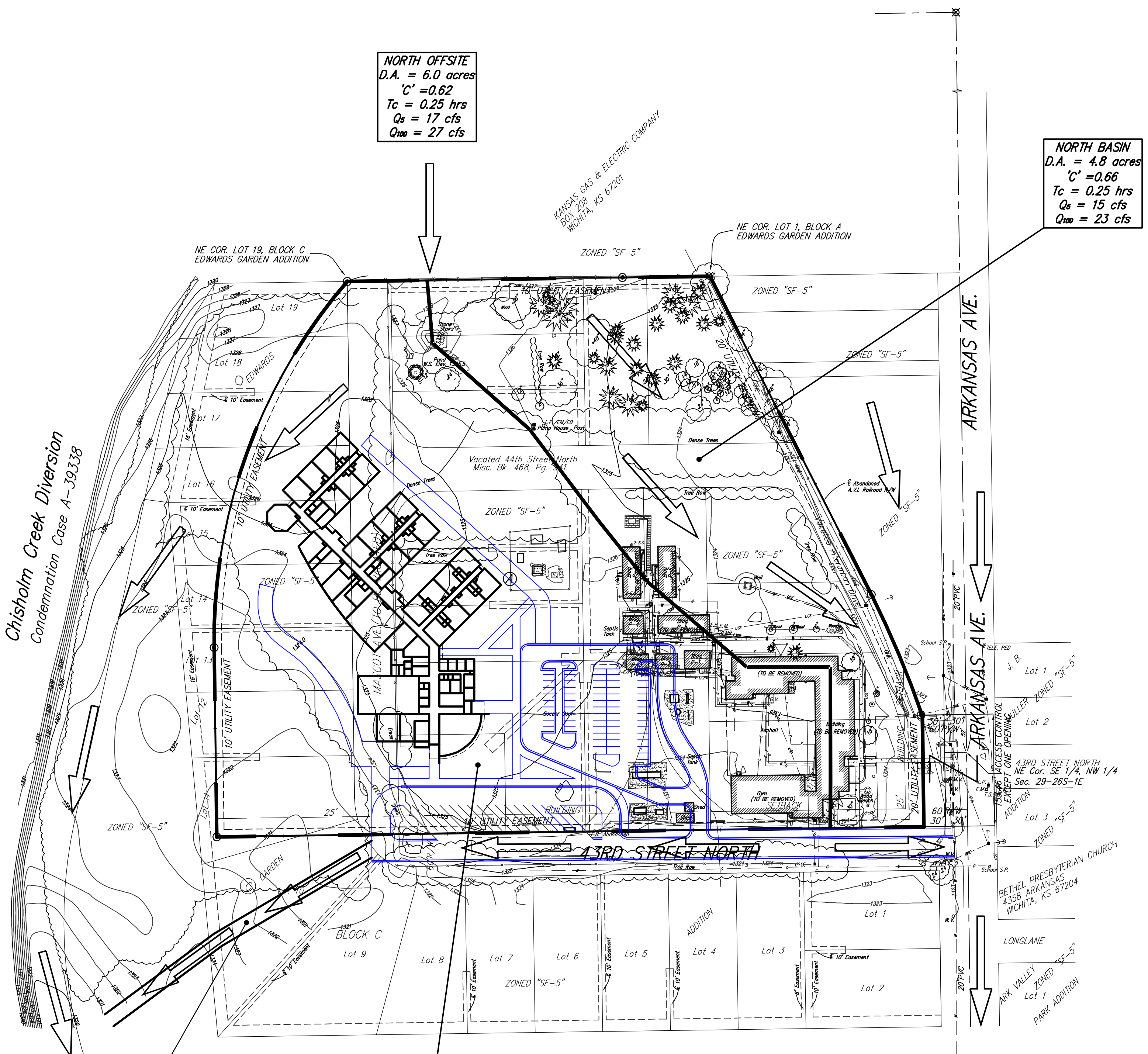
NOTE:  
 ALL TOPOGRAPHIC AND UTILITY INFORMATION PROVIDED BY A SURVEY PERFORMED BY SAVOY COMPANY, P.A., DATED JULY 20, 2006.

OWNER:  
 UNIFIED SCHOOL DISTRICT 259  
 ATTN: JOE HOOVER  
 3850 N HYDRAULIC  
 WICHITA, 67219  
 316-973-2239

- ⊕ = #4 REBAR W/ "BAUGHMAN" CAP (FOUND)
- ⊙ = #4 REBAR W/ "BAUGHMAN" CAP (SET)
- ⊗ = #4 REBAR W/ "SAVOY" CAP (FOUND)
- ⊘ = 5/8" REBAR (FOUND)

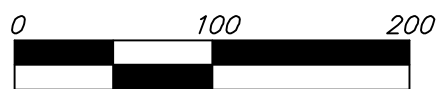
- (M) = MEASURED
- (D) = DESCRIBED
- (P) = PLATTED

Chisholm Creek Diversion  
 Condemnation Case A-39338



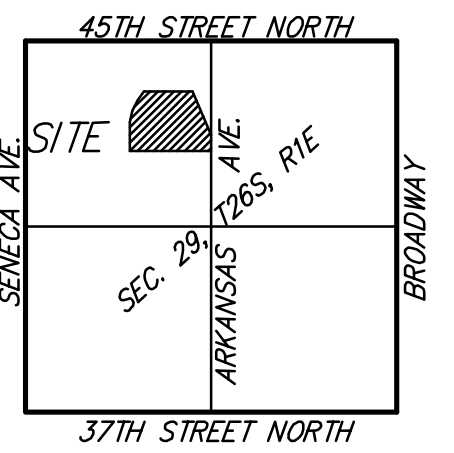
MINIMUM BUILDING PAD ELEVATIONS FOR LOWEST OPENING TO THE STRUCTURES		
LOT	BLOCK	ELEVATION
		NGVD29
1	A	1322.0

Bench Mark: "□" cut on Crosswalk Signal Pole base  
 6.4' N and 25.3' E of the NE Cor.  
 SE 1/4, NW 1/4 Sec. 29-26S-1E  
 Elev. 1323.41



DATE OF PREPARATION: 27 DECEMBER 2006  
 DATE OF TOPOGRAPHY: 20 JULY 2006  
 CONTOUR INTERVALS = 1 FOOT

NOTE:  
 Entire site lies within FEMA SPECIAL FLOOD HAZARD ZONE X-SHADED (0.2% annual chance flood and area protected by levee for 1% annual chance flood) per Preliminary FEMA FIRM Panel 213 of 700 for Sedgwick County, Kansas.



**EARHART ELEMENTARY SCHOOL**

27 DECEMBER 2006

**Baughman Company, P.A.**  
 315 Ellis St. Wichita, KS 67211 P 316-262-7271 F 316-262-0149  
 ENGINEERING | SURVEYING | PLANNING | LANDSCAPE ARCHITECTURE