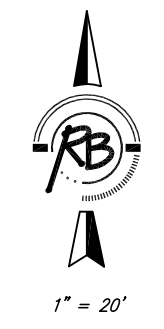


EMERALD BAY LIFT STATION ADDITION DRAINAGE AND GRADING PLAN

Wichita, Sedgwick County, Kansas

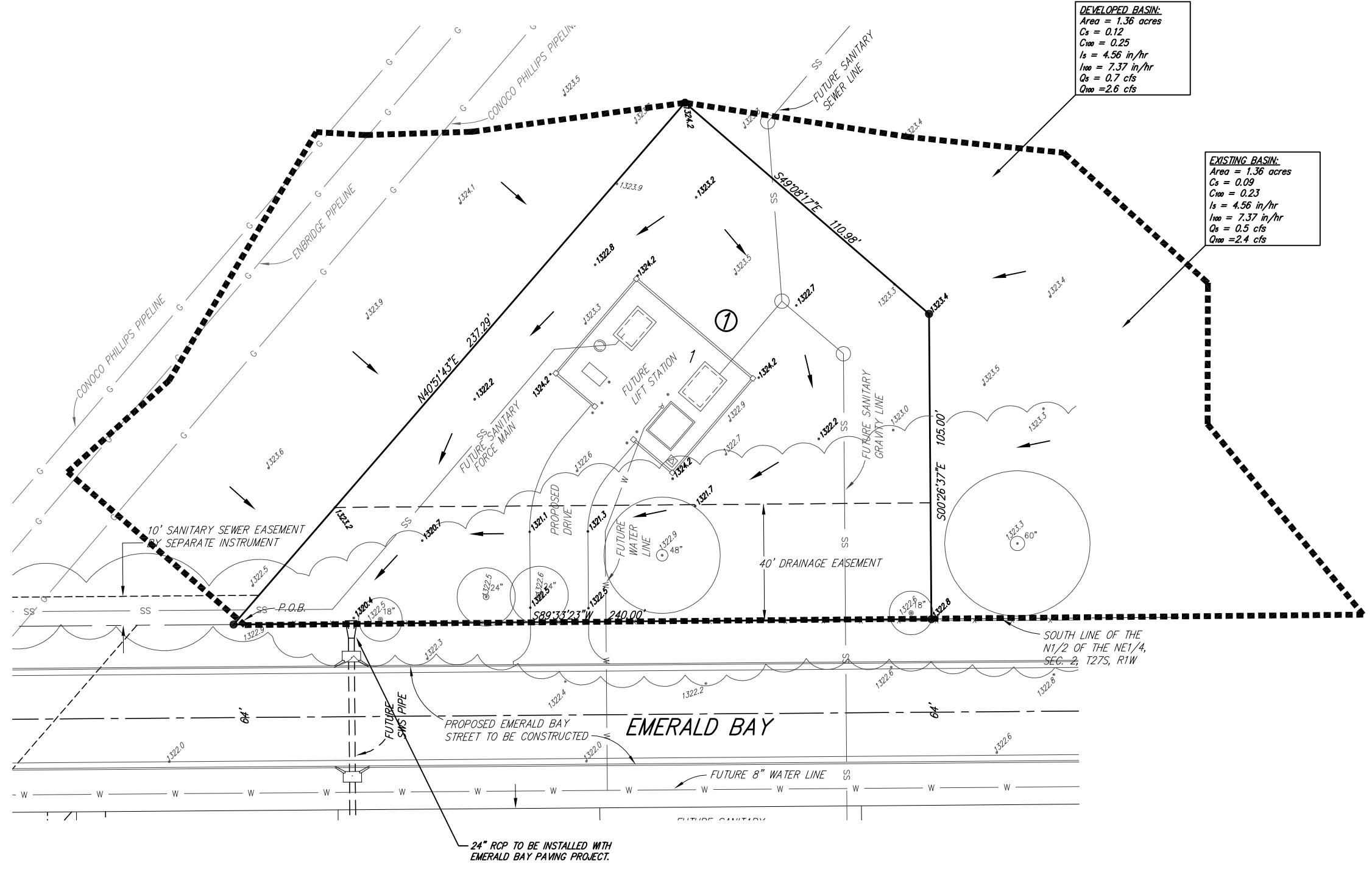
DEVELOPED BASIN:
 Area = 1.36 acres
 Cs = 0.12
 C₁₀₀ = 0.25
 I_s = 4.56 in/hr
 I₁₀₀ = 7.37 in/hr
 Q_s = 0.7 cfs
 Q₁₀₀ = 2.6 cfs

EXISTING BASIN:
 Area = 1.36 acres
 Cs = 0.09
 C₁₀₀ = 0.23
 I_s = 4.56 in/hr
 I₁₀₀ = 7.37 in/hr
 Q_s = 0.5 cfs
 Q₁₀₀ = 2.4 cfs



NOTES:
 Existing % Impervious = 0%
 Developed % Impervious = 6%
 Hydrologic Group A Soils
 Area to be planted with Fescue seed.

BENCH MARK:
 CITY OF WICHITA BRASS DISK TOP OF HEADWALL OF R.C.B.C UNDER WEST STREET, NORTH OF 29TH ST. NORTH ON EAST SIDE OF WEST ST. ELEV = 1321.80 M.S.L.



EMERALD BAY LIFT STATION ADDITION GRADING AND DRAINAGE PLAN WICHITA, KANSAS	
<p>Ruggles & Bohm, P.A. Engineering, Surveying, Land Planning</p> 924 North Main Wichita, Kansas 67203 www.rbkansas.com	DESIGN: KWL DRAWN: KWL REVIEW: UTILITY: DATE: Mar. 21, 2006
	PROJECT NUMBER: SHEET: 1 OF 1
DRAWING FILE: Drainage Plan	