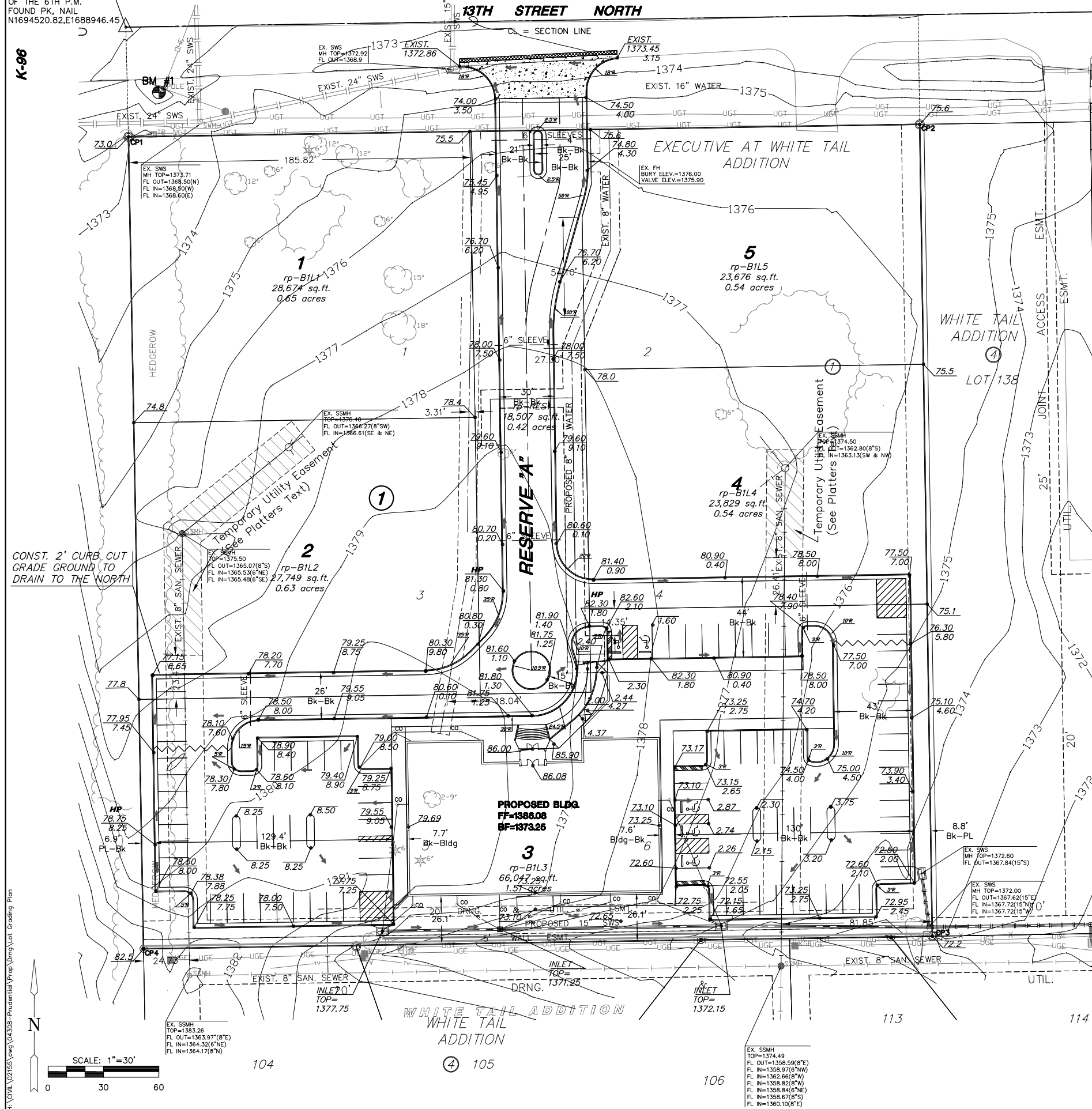


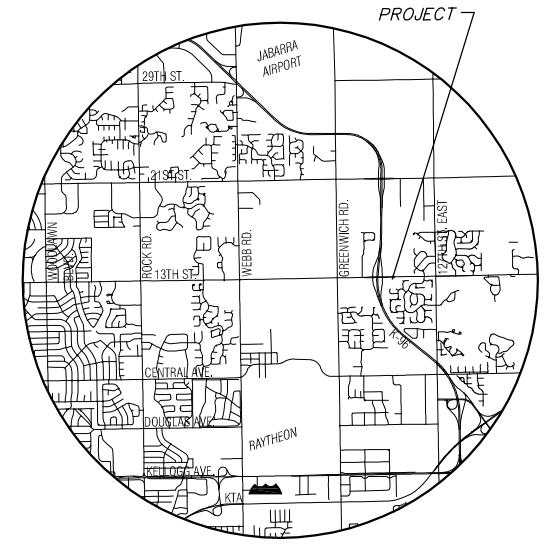
NW COR. NE 1/4
 SEC. 15, T27S, R2E
 OF THE 6TH P.M.
 FOUND PK, NAIL
 N1694520.82, E1688946.45

K-96



GENERAL NOTES

- UNLESS SHOWN OR STATED OTHERWISE ON THESE DRAWINGS, MATERIALS AND CONSTRUCTION SHALL BE IN ACCORDANCE WITH CITY OF WICHITA CONCRETE PAVEMENT AND ASPHALTIC CONCRETE PAVEMENT SPECIFICATIONS.
- CONTRACTOR WILL BE REQUIRED TO PROVIDE A MINIMUM ADVANCE NOTICE OF SEVENTY-TWO (72) HOURS TO UTILITY COMPANIES PRIOR TO STARTING ANY EXCAVATION AS FOLLOWS:
 KANSAS ONE-CALL 1-800-344-7233
 OR 687-2470 (LOCAL WICHITA)
 THE CONTRACTOR MUST NOTIFY THE FOLLOWING IN CASE OF AN EMERGENCY:
 SBC (TELEPHONE) 800-870-8390
 COX COMMUNICATIONS (CABLE) 262-0661
 WESTAR (ELECTRIC) 383-8600
 KANSAS GAS SERVICE (GAS) 832-3101
 CITY OF WICHITA WATER & SEWER MAINT. 262-6000
 AQUILA (GAS) 946-0096
- THE CONTRACTOR SHALL BE RESPONSIBLE FOR PRESERVING PROPERTY IRONS. THE CONTRACTOR WILL BE REQUIRED TO RE-ESTABLISH ANY PROPERTY IRONS WHICH ARE DAMAGED OR DESTROYED BY HIS CONSTRUCTION OPERATIONS. SUCH IRONS SHALL BE RE-ESTABLISHED BY A LICENSED LAND SURVEYOR IN ACCORDANCE WITH STATE LAWS.
- EXISTING UTILITIES AND THEIR LOCATIONS, AS SHOWN ON THE PLANS REPRESENT THE BEST INFORMATION OBTAINABLE FOR DESIGN. LOCATION INFORMATION HAS BEEN OBTAINED FROM THE VARIOUS UTILITY COMPANIES AND IS EITHER FROM COMPANY RECORD DRAWINGS OR COMPANY PROVIDED FIELD LOCATIONS. THE PLAN LOCATIONS SHOWN ARE NOT GUARANTEED. ADDITIONAL EXISTING UTILITIES MAY ALSO BE ENCOUNTERED.
- RUBBLE FROM THE REMOVAL OF MISCELLANEOUS STRUCTURES AND EXCESS EXCAVATION WHICH IS TO BE WASTED SHALL BE DISPOSED OF ON SITES TO BE PROVIDED BY THE CONTRACTOR. THESE SITES SHALL BE APPROVED BY THE ENGINEER AS TO SUITABILITY, APPEARANCE AND SITE LOCATION. LOCATIONS THAT, IN THE OPINION OF THE ENGINEER, WILL LEAVE AN UNSIGHTLY APPEARANCE WILL NOT BE APPROVED. ALL DISPOSAL SITES MUST BE APPROVED BY THE KANSAS DEPARTMENT OF HEALTH AND ENVIRONMENT. MATERIAL EITHER STOCKPILED OR DISPOSED OF IN A FLOOD PLAIN WOULD REQUIRE A KANSAS STATE BOARD OF AGRICULTURE PERMIT. ANY MATERIAL DUMPED IN WATERS OF THE UNITED STATES OR WETLANDS IS SUBJECT TO U.S. CORPS OF ENGINEERS PERMITTING REGULATIONS. ANY MATERIAL BURIED OR STOCKPILED BEYOND APPROVED CONSTRUCTION LIMITS WOULD REQUIRE ADDITIONAL ARCHAEOLOGICAL INVESTIGATIONS UNLESS BURIED IN A PREVIOUSLY APPROVED BORROW LOCATION.
- A SAW CUT OF AT LEAST ONE-HALF THE DEPTH OF THE EXISTING SURFACE COURSES OR ONE-FOURTH THE DEPTH OF THE EXISTING TOTAL PAVEMENT THICKNESS SHALL BE PROVIDED AT LOCATIONS WHERE PROPOSED CONSTRUCTION ABUTS AN EXISTING SURFACE OR PAVEMENT FOR WHICH PARTIAL REMOVAL OF THAT SURFACE OR PAVEMENT IS REQUIRED. SAW JOINT TO FACILITATE REMOVAL WITHIN THREE (3) FEET OF EXISTING JOINTS WILL NOT BE PERMITTED AND FOR SUCH INSTANCES THE LIMITS OF REMOVAL SHALL EXTEND TO THE EXISTING JOINT. SUCH SAW CUTS WILL NOT BE PAID FOR DIRECTLY AND THIS COST SHALL BE CONSIDERED AS SUBSIDIARY TO THE REMOVAL OF SURFACE OR PAVEMENT.
- CONTRACTOR SHALL RESEED AND MULCH ALL DISTURBED AREAS. COST SHALL BE CONSIDERED SUBSIDIARY TO SITE RESTORATION.



VICINITY MAP

LEGAL

Lots 5 & 6, Block 1 Executive at White Tail Addition,
 Sedgwick County, Kansas.

SITE NOTES

PLAT AREA - 4.33± = ACRES MORE OR LESS.
 - 1.58± = IMPERVIOUS
 ZONING: LC - "LIGHT COMMERCIAL"

FLOOD ZONE

PANEL 200321 150A - JUNE 3, 1986
 ZONE: C - Areas of minimal flooding.

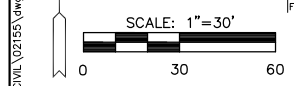
BENCHMARKS

- BM #1 Railroad spike in the South face of a guy pole, 20' East and 34' South of the Northwest corner of the NE 1/4, Sec. 15, T27S, R2E. ELEV.=1376.26
- BM #2 Railroad spike in the South face of the 2nd power pole West of the Southeast corner of Lakeview Cemetery, 1025' East and 38' North of the Northwest corner of the NE 1/4, Sec. 15, T27S, R2E. ELEV.=1367.00
- BM #3 Chiseled square the North end of the median island on the South side of 13th St. North and Whitetail. 639' West and 52' South of the Northeast corner of the NE 1/4, Sec. 15, T27S, R2E. ELEV.=1353.315

CP1	N1694461.31	E1688947.87
CP2	N1694468.03	E1689376.75
CP3	N1694027.99	E1689383.54
CP4	N1694021.16	E1688956.08

LEGEND

- PROP. REINFORCED CONC.
- TRANSITION CURB
- 6" SLEEVE (Depth=30")
- TREE REMOVAL
- PROPOSED SPOT ELEVATIONS
- RAINLEADER
- CLEANOUT
- PAVEMENT TRANSITION



MKEC
ENGINEERING CONSULTANTS
411 N. WEBB ROAD
WICHITA, KS. 67206
316-684-9600

THE EXECUTIVE AT WHITE TAIL 2ND ADDITION
PROJECT NAME

LOT GRADING PLAN
SHEET TITLE

MKEC	DAC	JTC
DESIGN BY:	DRAWN BY:	CHECKED BY:
APRIL 2005	04308	CS / 11
DATE	JOB NO.	SHEET/OF

REVISED 9-01-05 (X-REF)