

FONTANA & FONTANA 2ND ADDITIONS TO WICHITA, SEDGWICK COUNTY, KANSAS FOUR CORNER PLAN

SCALE: 1" = 100'

• = 3/4" IRON PIPE W/PEC CAP UNLESS OTHERWISE NOTED

BENCHMARKS:

- BM#1: C.O.W. DISK STAMPED "NO STAMP" ±22.0' S. OF S1/4 COR. SEC. 31, T26S, R1W. ELEV. = 1728.29 CITY DATUM, 1365.69 N.G.V.D.
- BM#2: SET "T" POST ±10' E. AND 10' N. OF S.E. COR. 5 ACRE EXCEPTION OR ±65' E. AND ±40' N. OF S.E. COR. GOV. LOT 4. ELEV. = 1739.39 CITY DATUM
- BM#3: FOUND 600 STEP NAIL IN S.E. FACE OF POWER POLE ON THE N.W. COR. 119TH ST. WEST AND 29TH ST. N. ±38' N.W. OF S.W. COR. SEC. 31, T26S, R1W. ELEV. = 1749.22 CITY DATUM
- BM#4: FOUND R.R. SPIKE IN W. FACE OF POWER POLE ON E. SIDE 119TH ST. WEST ADJACENT TO 3133 N. 119TH, OR ±18' S. AND ±18' E. OF THE N.W. COR. GOV. LOT 4. ELEV. = 1719.55 CITY DATUM
- BM#5: SET R.R. SPIKE IN S. FACE S. POLE 2 POLE ELECTRIC LINE STRUCTURE ON E. SIDE 119TH ST. WEST OR 49' S. AND 25' E. OF W1/4 COR. SEC. 31, T26S, R1W. ELEV. = 1713.35 CITY DATUM
- BM#6: SET R.R. SPIKE IN S. FACE OF S. POLE 2 POLE ELECTRIC LINE STRUCTURE, 2ND STRUCTURE W. OF CENTER SEC. 31, T26S, R1W. ELEV. = 1687.55 CITY DATUM
- BM#7: SET "T" POST IN PI DITCH BERM N-E, ±20' E. OF CENTER SEC. 31, T26S, R1W. ELEV. = 1689.33 CITY DATUM
- BM#8: SET "T" POST ±15' S. OF N.W. COR. SW1/4, SE1/4, SEC. 31, T26S, R1W. ELEV. = 1637.05 CITY DATUM
- BM#9: SET "T" POST ±70' W. AND ±75' S. OF N.E. COR. SW1/4, SE1/4, SEC. 31, T26S, R1W. ELEV. = 1637.05 CITY DATUM
- BM#10: FOUND R.R. SPIKE IN POLE "NO USE" ON N. SIDE 29TH ST. N. BESIDE POWER POLE, ±130' E. OF DRIVE TO S. FOR 10225 W. 29TH ST. NORTH. ELEV. = 1637.05 CITY DATUM
- BM#11: SET "T" POST ±75' S.S.E. OF CENTER POINT IRRIGATION NEAR CENTER SW1/4 SEC. 31, T26S, R1W. ELEV. = 1751.65 CITY DATUM

LEGEND

- SPOT ELEVATION
- HIGH POINT ELEVATION
- MATCH EXISTING ELEVATION
- STORM SEWER AND INLET
- STORM SEWER AND MANHOLE
- VIEW-OUT BASEMENT
- WALK-OUT BASEMENT
- STANDARD BASEMENT
- POSSIBLE WALK-OUT BASEMENT
- POSSIBLE VIEW-OUT

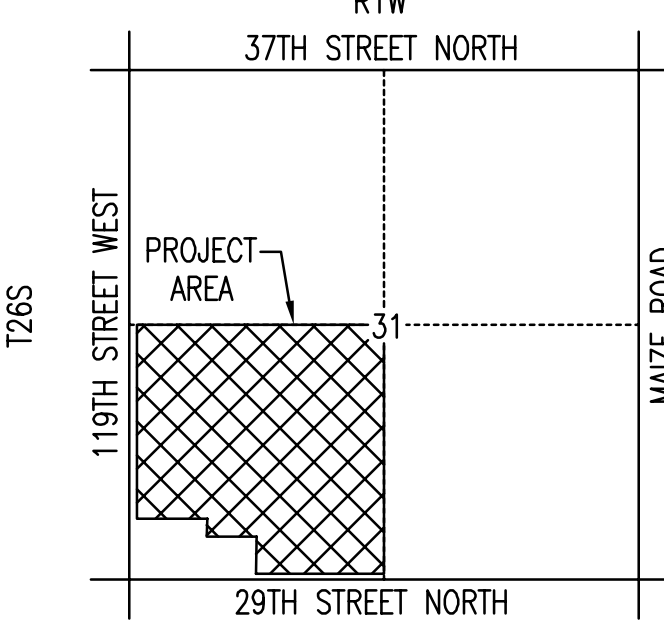
FONTANA

MINIMUM OPENINGS	ELEVATION (N.G.V.D.)	City Datum
BLOCK 1 LOTS 31, 47-68	1361.80	174.40
BLOCK 3 LOTS 15-41, 55	1359.10	171.70
BLOCK 4 LOTS 22-25	1358.70	171.30

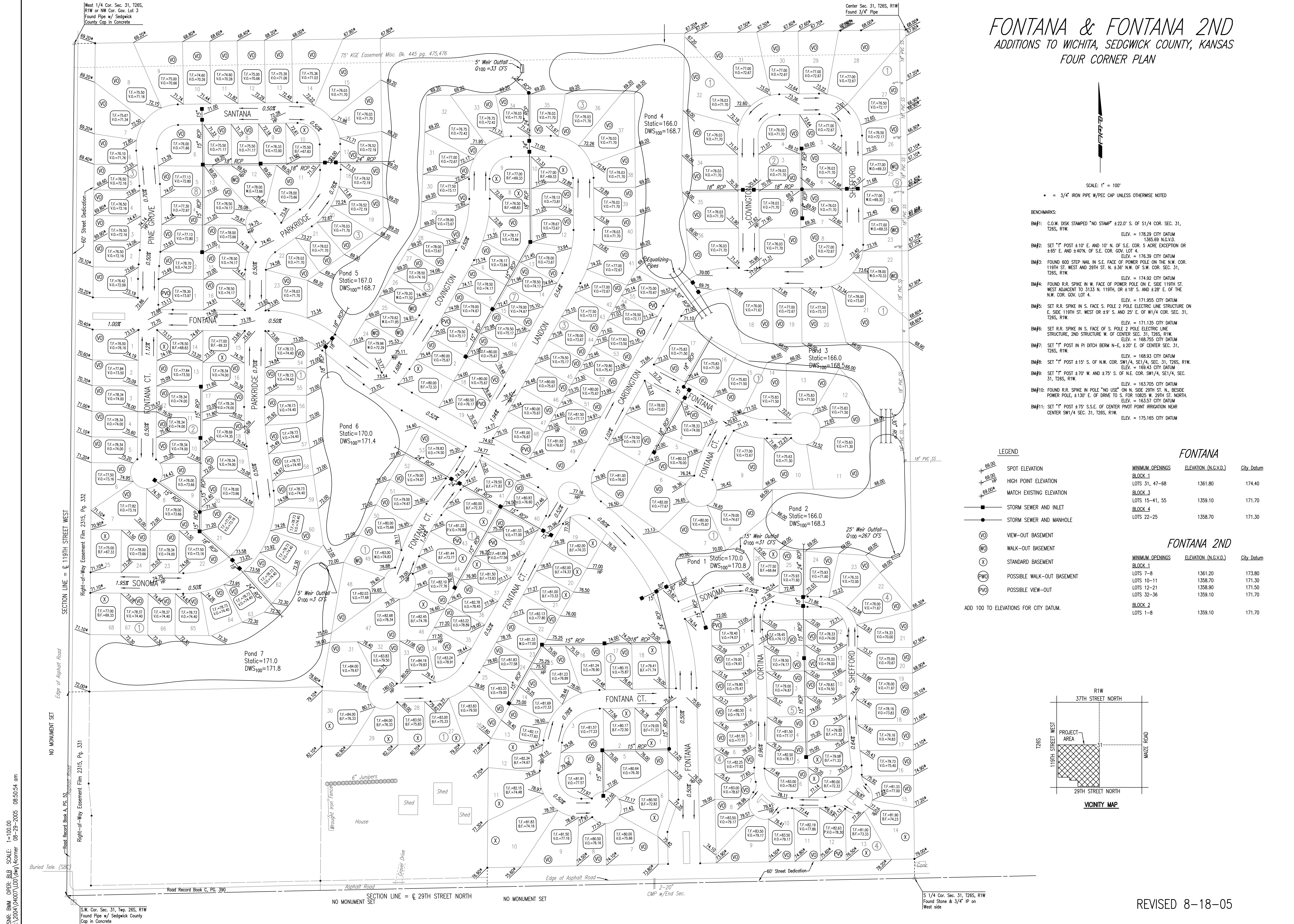
FONTANA 2ND

MINIMUM OPENINGS	ELEVATION (N.G.V.D.)	City Datum
BLOCK 1 LOTS 7-8	1361.20	173.80
BLOCK 2 LOTS 10-11	1358.70	171.30
BLOCK 2 LOTS 12-21	1358.90	171.50
BLOCK 2 LOTS 32-36	1359.10	171.70
BLOCK 2 LOTS 1-8	1359.10	171.70

ADD 100 TO ELEVATIONS FOR CITY DATUM.



VICINITY MAP



DSNR: BMM OPER: BJB SCALE: 1"=100.00
 03/20/04(04007)LDI(dwg) Corner 08-29-2005 08:50:54 am

West 1/4 Cor. Sec. 31, T26S,
R1W or NW Cor. Gov. Lot 3
Found Pipe w/ Sedgwick
County Cap in Concrete

Center Sec. 31, T26S, R1W
Found 3/4" Pipe

S.W. Cor. Sec. 31, Twp. 26S, R1W
Found Pipe w/ Sedgwick County
Cap in Concrete

S 1/4 Cor. Sec. 31, T26S, R1W
Found Stone & 3/4" IP on
West side

REVISED 8-18-05