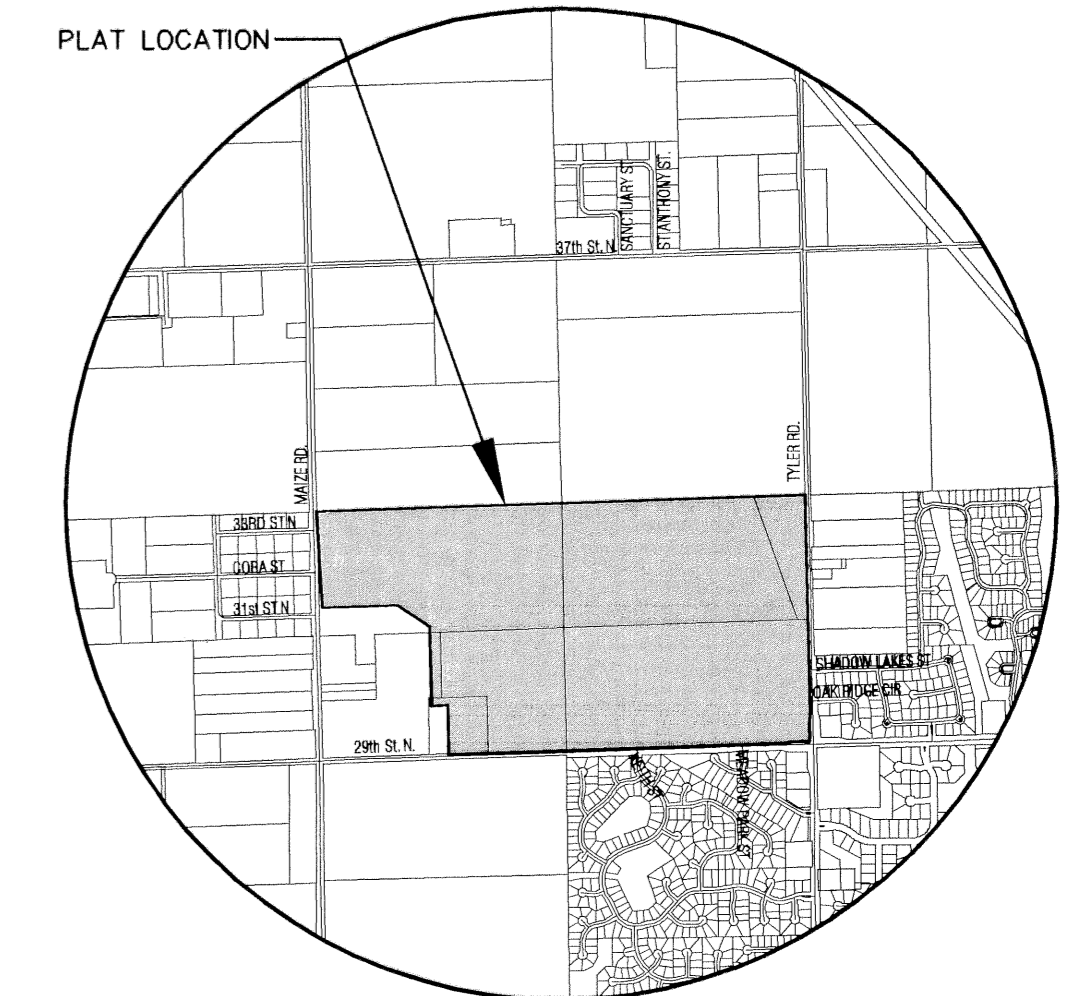
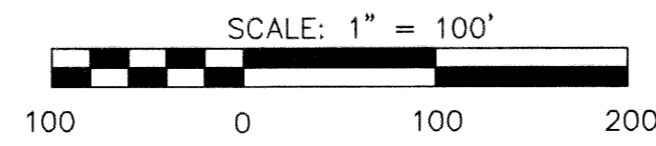
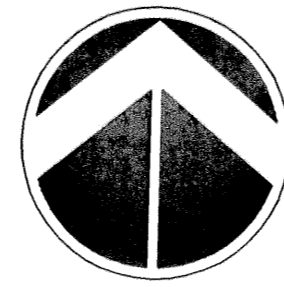


BENCHMARKS

- BM#1 C.O.W. disc 0.5 miles east of Maize Rd. on 29th St. N. 25' ± N. of centering of 29th St. Elev.=160.86
- BM#2 RR Spike in South face of South H-pole 6th H-pole West of Tyler Rd. and 1/2 Mile N. of 29th St. N. Elev.=166.37
- BM#7 PK nail(point numbered 201) in asphalt on bike path 60 feet South of 33rd St. N. on East side of Maize Rd. 28 feet NW. of PP. Elev.=163.97
- BM#9 RR sike in NW face of PP N. side of 29th St. N., 6th PP West of C.O.W. Disc (Disc 1/2 mile East of Maize Rd. Elev.=164.55

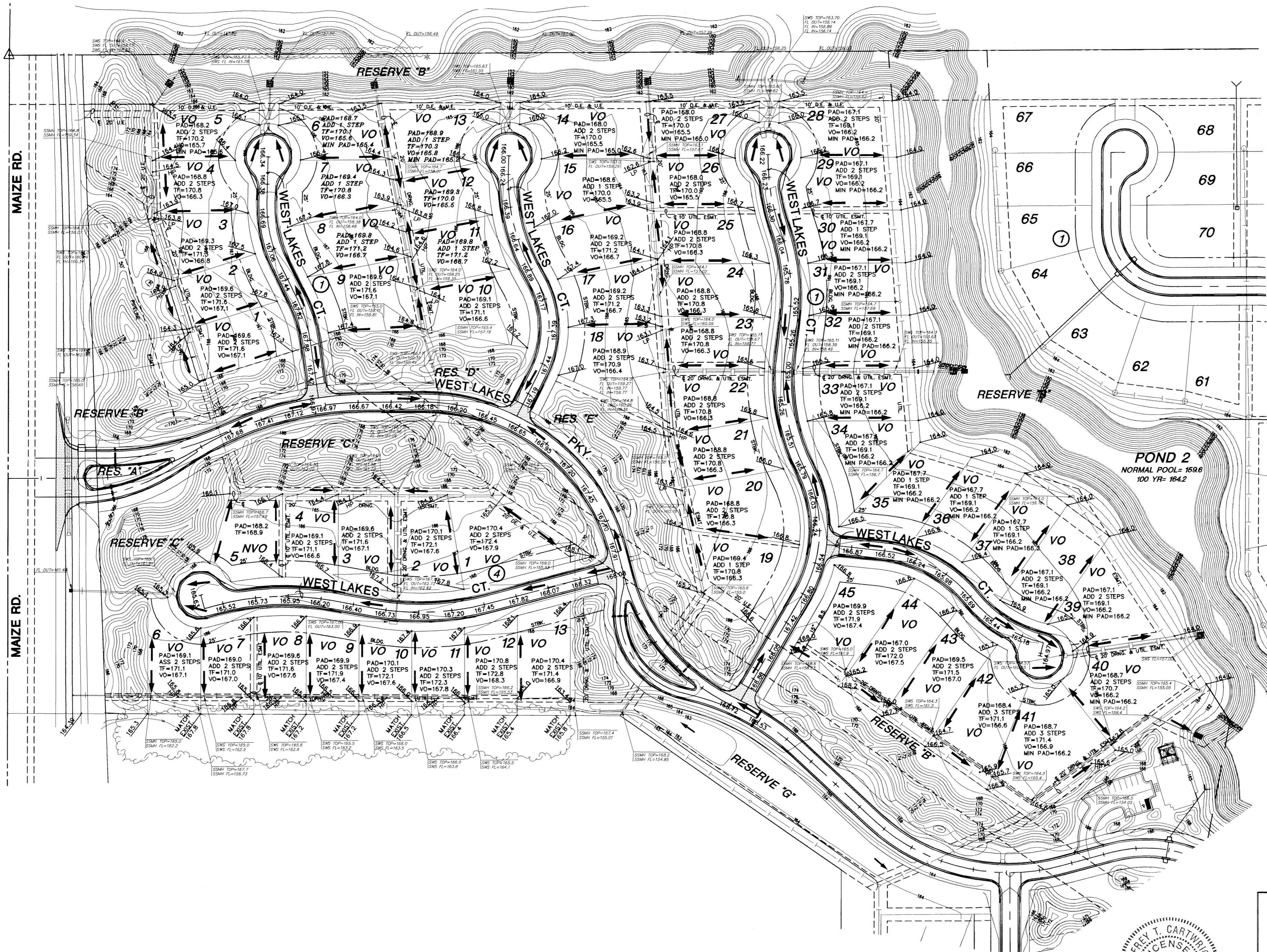
NOTES

ALL BACKYARD SWS IS 12" PIPE

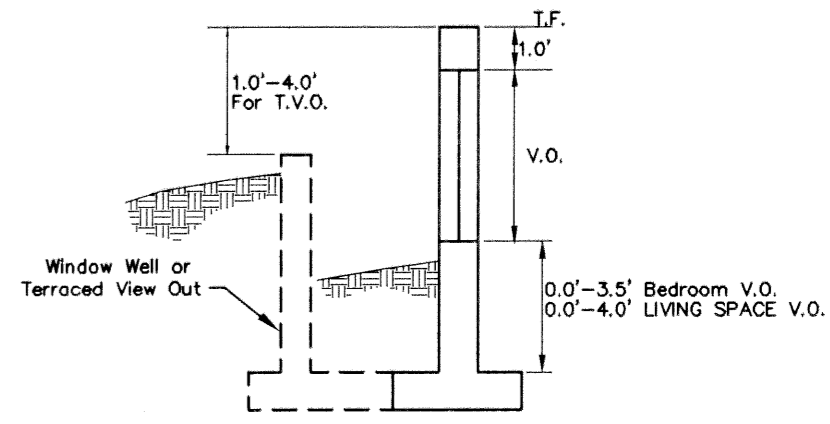


VICINITY MAP

MINIMUM PAD ELEVATIONS (LOWEST OPENINGS)				
LOT	BLOCK	ELEVATION (CITY DATUM)	ELEVATION (NGVD)	HYDRAULIC GRADE LINE (CITY)
1	1	N/A	N/A	165.2
2	1	N/A	N/A	165.2
3	1	N/A	N/A	164.7
4	1	N/A	N/A	164.7
5	1	165.6	1353.0	163.8
6	1	165.4	1352.8	164.4
7	1	N/A	N/A	165.0
8	1	N/A	N/A	165.0
9	1	N/A	N/A	165.3
10	1	N/A	N/A	165.3
11	1	N/A	N/A	165.3
12	1	N/A	N/A	165.0
13	1	165.2	1352.6	164.4
14	1	165.0	1352.4	163.5
15	1	N/A	N/A	163.5
16	1	N/A	N/A	164.3
17	1	N/A	N/A	164.3
18	1	N/A	N/A	164.4
19	1	N/A	N/A	164.9
20	1	N/A	N/A	164.9
21	1	N/A	N/A	164.9
22	1	N/A	N/A	164.4
23	1	N/A	N/A	164.4
24	1	N/A	N/A	164.3
25	1	N/A	N/A	164.3
26	1	N/A	N/A	163.5
27	1	165.0	1353.6	163.5
28	1	166.2	1353.6	163.5
29	1	166.2	1353.6	163.5
30	1	166.2	1353.6	163.5
31	1	166.2	1353.6	163.5
32	1	166.2	1353.6	163.5
33	1	166.2	1353.6	163.5
34	1	166.2	1353.6	163.5
35	1	166.2	1353.6	163.5
36	1	166.2	1353.6	163.5
37	1	166.2	1353.6	163.5
38	1	166.2	1353.6	163.5
39	1	166.2	1353.6	163.5
40	1	166.2	1353.6	163.5
41	1	166.2	1353.6	163.5
42	1	N/A	N/A	163.5
43	1	N/A	N/A	163.5
44	1	N/A	N/A	163.5
45	1	N/A	N/A	163.5
1	4	N/A	N/A	166.5
2	4	N/A	N/A	166.5
3	4	N/A	N/A	166.5
4	4	N/A	N/A	166.5
5	4	N/A	N/A	166.5
6	4	N/A	N/A	165.6
7	4	N/A	N/A	165.6
8	4	N/A	N/A	165.6
9	4	N/A	N/A	163.7
10	4	N/A	N/A	163.7
11	4	N/A	N/A	163.7
12	4	N/A	N/A	163.7
13	4	N/A	N/A	163.7



- LEGEND**
- 6IN - CONIFEROUS TREE & DIAMETER
 - 12IN - DECIDUOUS TREE & DIAMETER
 - SN - SIGN
 - BUSH
 - EDGE OF TREES
 - FENCE
 - SSMH - SANITARY SEWER MANHOLE
 - GM - GAS METER
 - POLE - POLE
 - HLP - HIGH LINE POLE
 - GATE
 - PP - POWER POLE AND GUY ANCHOR
 - TR - TELEPHONE RISER
 - INLET
 - STORM SEWER PIPE
 - WATER LINE
 - SANITARY SEWER LINE
 - GAS LINE
 - TELEPHONE LINE
 - UNDERGROUND ELECTRIC LINE
 - OVERHEAD TELEPHONE
 - OVERHEAD ELECTRIC
 - UNDERGROUND FIBER OPTIC CABLE
 - SECTION CORNER
 - PROPERTY CORNER FOUND
 - WALL
 - BENCHMARK
 - WO - WALK OUT
 - VO - VIEW OUT
 - PVO - PARTIAL VIEW OUT
 - PWO - PARTIAL WALK OUT
 - NVO - NO VIEW OUT
 - WO* - WALK-OUT WHICH MAY REQUIRE THICKER FOOTING AND/OR ENGINEERED FILL UNDER FOOTINGS

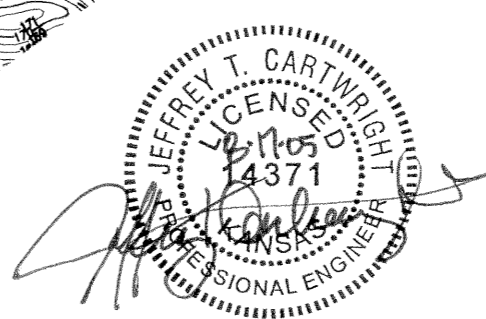


VIEW OUT & TERRACED VIEW OUT DETAIL

G:\CIVIL\99118\DWG\GRAD\PH_2\99118_VO-WO_MAP.DWG

**PHASE 2 - LOT GRADING PLAN
FOX RIDGE ADDITION**

DATE: AUGUST 2005



FOX RIDGE ADDITION
PROJECT NAME

PHASE 2 - VIEW-OUT / WALK-OUT MAP
SHEET TITLE

DESIGN BY: KLA	DRAWN BY: SMD/KWS	CHECKED BY: GJA
DATE: AUGUST 2005	JOB NO.: 99118_VO-WO_MAP	SHEET/OF: 1 / 1