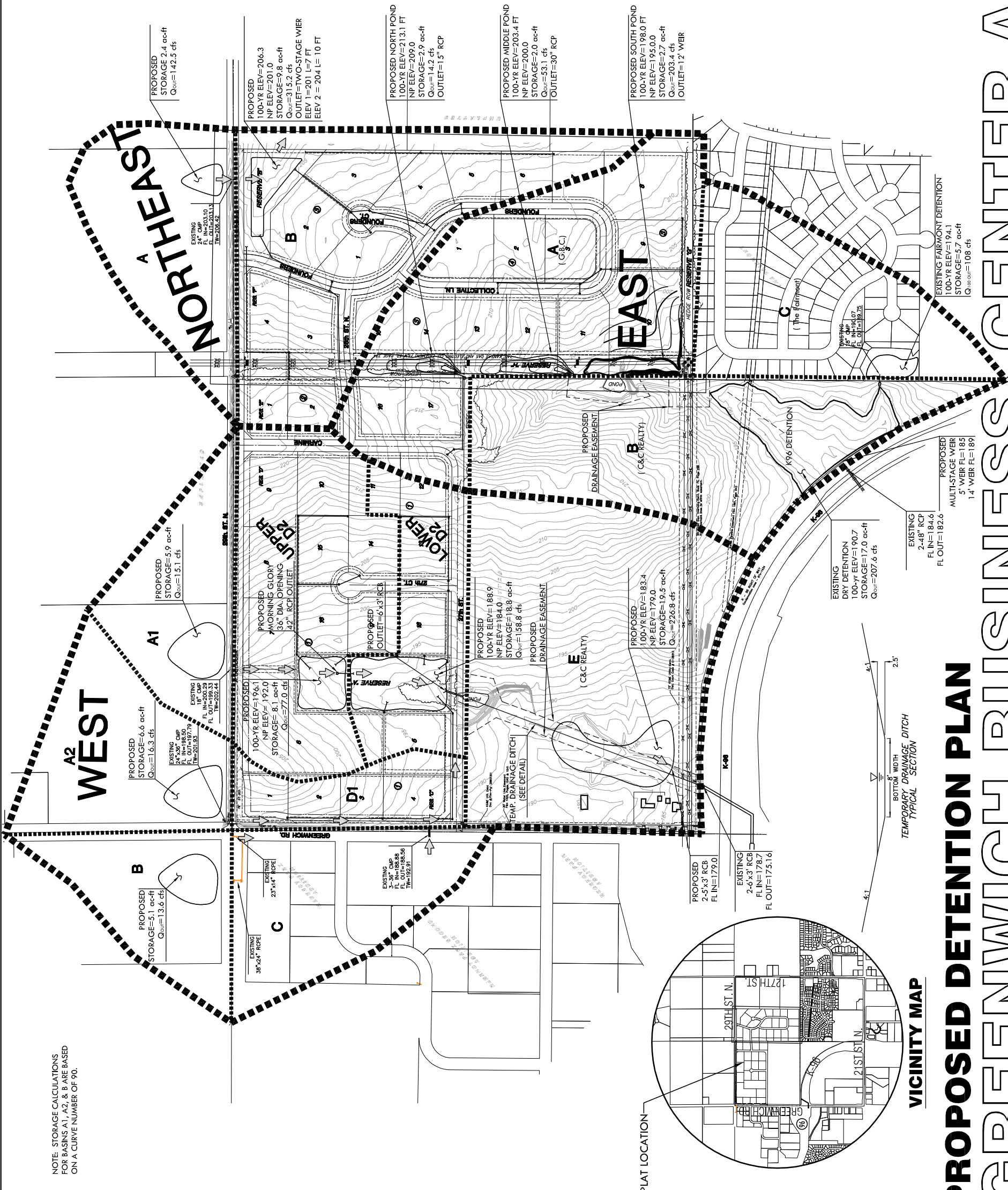


NOTE: STORAGE CALCULATIONS FOR BASINS A1, A2, & B ARE BASED ON A CURVE NUMBER OF 90.



WEST

NORTH EAST

EAST

NOTES

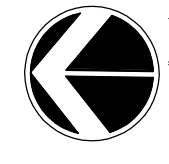
1. ZONING: Existing - SF-20 and RR Proposed - LI upon annexation w/ P.O.
2. ANNEXATION: An application for annexation shall be submitted to the City of Wichita
3. PUBLIC UTILITIES: Shall be extended to site by petitions
4. EXISTING USE: Vacant Land and Cultivated Fields
5. PLAT AREA: Gross= 158.81 Ac. Net = 155.65 Ac.
6. SURVEY DATE: May 12th, 2005 (by MKEC)
7. MINIMUM PADS: As shown on the Final Drainage Plan
8. LOT TOTAL - 42
9. RESERVES USES: Open space, drainage, utilities, in designated locations, monuments, landscaping, and irrigation.

BENCH MARK

BM #1 Brass Disc on top of curb in front of fire hydrant, Lot 1, Block 1, Recency Park Addition, an Addition to Wichita, Sedgwick County, KS
 Elev.=191.56 (City of Wichita)
 1378.96 (NGVD 29)

LEGEND

- ▲ - Sec. Corner
- - Find. Prop. Corner
- with 'M' - GAS METER
- with 'S' - SANITARY SEWER MANHOLE
- with 'E' - POWER POLE/GUY ANCHOR
- with 'K' - ELECTRIC BOX
- with 'S' - SIGN
- with 'G' - GATE
- with 'T' - TREES
- with 'E' - EDGE OF TREES
- with 'P' - POLE - POLE
- with 'H' - HIGH TENSION POWER LINE
- with 'F' - FIRE HYDRANT
- with 'W' - WATER VALVE
- with 'M' - WATER METER
- with 'R' - TELEPHONE RISER
- - FENCE
- - STORM SEWER PIPE
- - WATER LINE
- - SANITARY SEWER LINE
- - GAS LINE
- - TELEPHONE LINE
- - OVERHEAD ELECTRIC
- - ZONED PARCELS
- - STREET DEDICATION WIDTH VARIES 60' ALONG S.L. 75' AT INTERSECTION
- - WATERSHED BOUNDARIES
- - DRAINAGE BOUNDARIES
- - DRAINAGE AREAS
- - WATERSHED AREAS
- - FLOW DIRECTION



SCALE: 1" = 300'

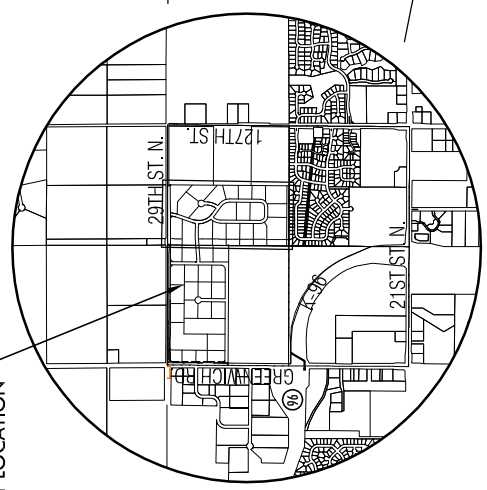
PROPOSED DETENTION PLAN

GREENWICH BUSINESS CENTER ADDITION

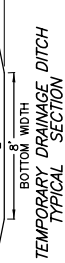
OWNER / DEVELOPER: Ritchie Development Corporation 8100 E. 22nd North, #1000 Wichita, KS 67226-2310 (316) 684-7300

REVISED: JANUARY 2007
 ADDED KGE POND IN THE EAST WATERSHED.
 MODIFIED OUTLET STRUCTURES IN THE WEST AND NORTHEAST WATERSHEDS.

MKEC
 ENGINEERING
 CONSULTANTS, INC.
 411 N. WEBB ROAD
 WICHITA, KS 67206
 WWW.MKEC.COM



VICINITY MAP



TYPICAL SECTION
 BOTTOM WIDTH
 TEMPORARY DRAINAGE DITCH