

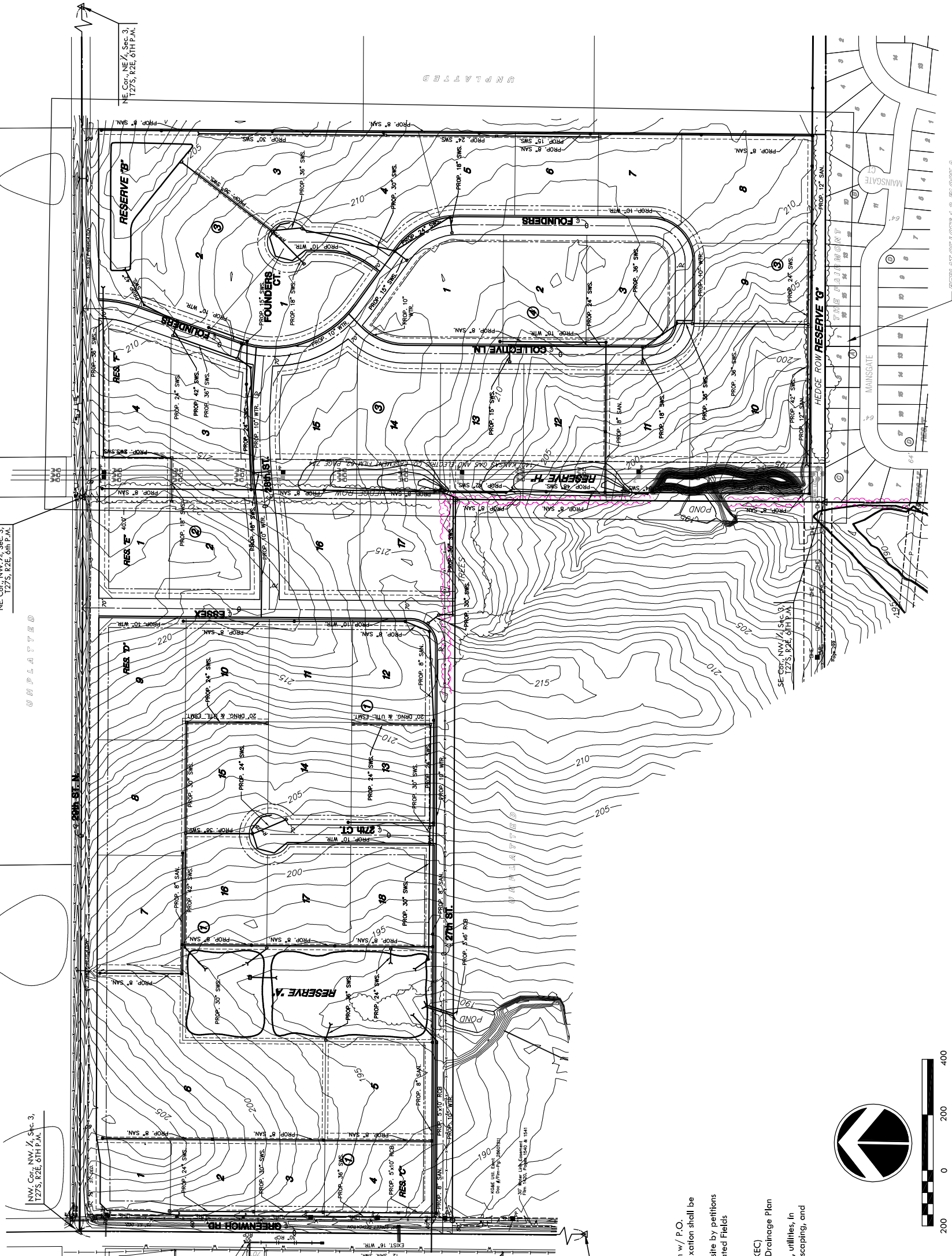
BENCH MARK

Brass Disc on top of curb in front of fire hydrant,
Lot 1, Block 1, Recency Park Addition, an Addition
to Wichita, Sedgewick County, KS

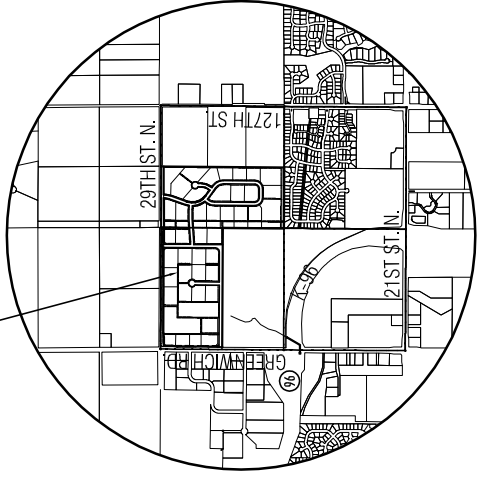
Elev.=191.56 (City of Wichita)
1378.96 (NGVD 29)

LEGEND

- ▲ - Sec. Corner
- - Fict. Prop. Corner
- GM - GAS METER
- PS - SANITARY SEWER MANHOLE
- PK - POWER POLE/GUY ANCHOR
- MB - MISC. BOX
- SN - SIGN
- GA - GATE
- TR - TREES
- TE - TELEPHONE LINE
- OE - OVERHEAD ELECTRIC
- HP - HIGH TENSION POWER LINE
- FW - FIRE HYDRANT
- WV - WATER VALVE
- WM - WATER METER
- SR - SANITARY RISER
- FC - FENCE
- SP - STORM SEWER PIPE
- WL - WATER LINE
- SS - SANITARY SEWER LINE
- GL - GAS LINE
- TL - TELEPHONE LINE
- OE - OVERHEAD ELECTRIC
- HP - HIGH TENSION POWER LINE
- ST - STREET DEDICATION WIDTH VARIES 60' ALONG S.L. 75' AT INTERSECTION



PROJECT LOCATION



VICINITY MAP

NOTES

1. ZONING: Existing - SF-20 and RR
Proposed - U upon annexation w/ P.O.
2. ANNEXATION: An application for annexation shall be submitted to the City of Wichita
3. PUBLIC UTILITIES: Shall be extended to site by petitions
4. EXISTING USE: Vacant Land and Cultivated Fields
5. PLAT AREA: Gross= 158.81 Ac.
Net=1155.65 Ac.
6. SURVEY DATE: May 12th, 2005 (by MKEC)
7. MINIMUM PADS: As shown on the Final Drainage Plan
8. LOT TOTAL - 42
9. RESERVES USES: Open space, drainage, utilities, in designated locations, monuments, landscaping, and irrigation.

UTILITY PLAN

GREENWICH BUSINESS CENTER ADDITION

OWNER / DEVELOPER: Ritchie Development Corporation 8100 E. 22nd North, #1000 Wichita, KS 67226-2310 (316) 684-7300

Date: August, 2005

Revised Date: January, 2007

MKEC
ENGINEERING
CONSULTANTS, INC.
111 N. WEBB ROAD
3161 684-7300
www.mkec.com