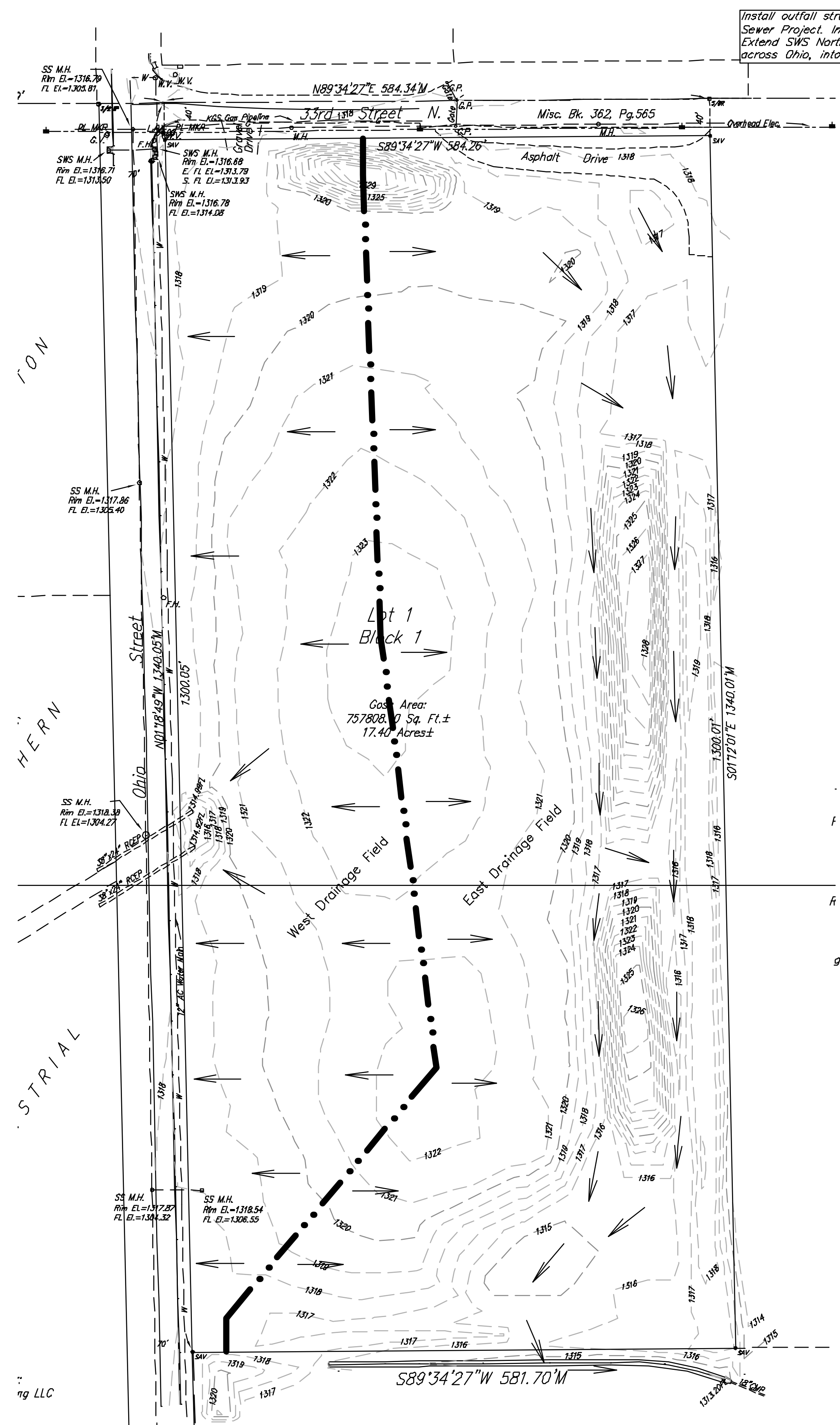
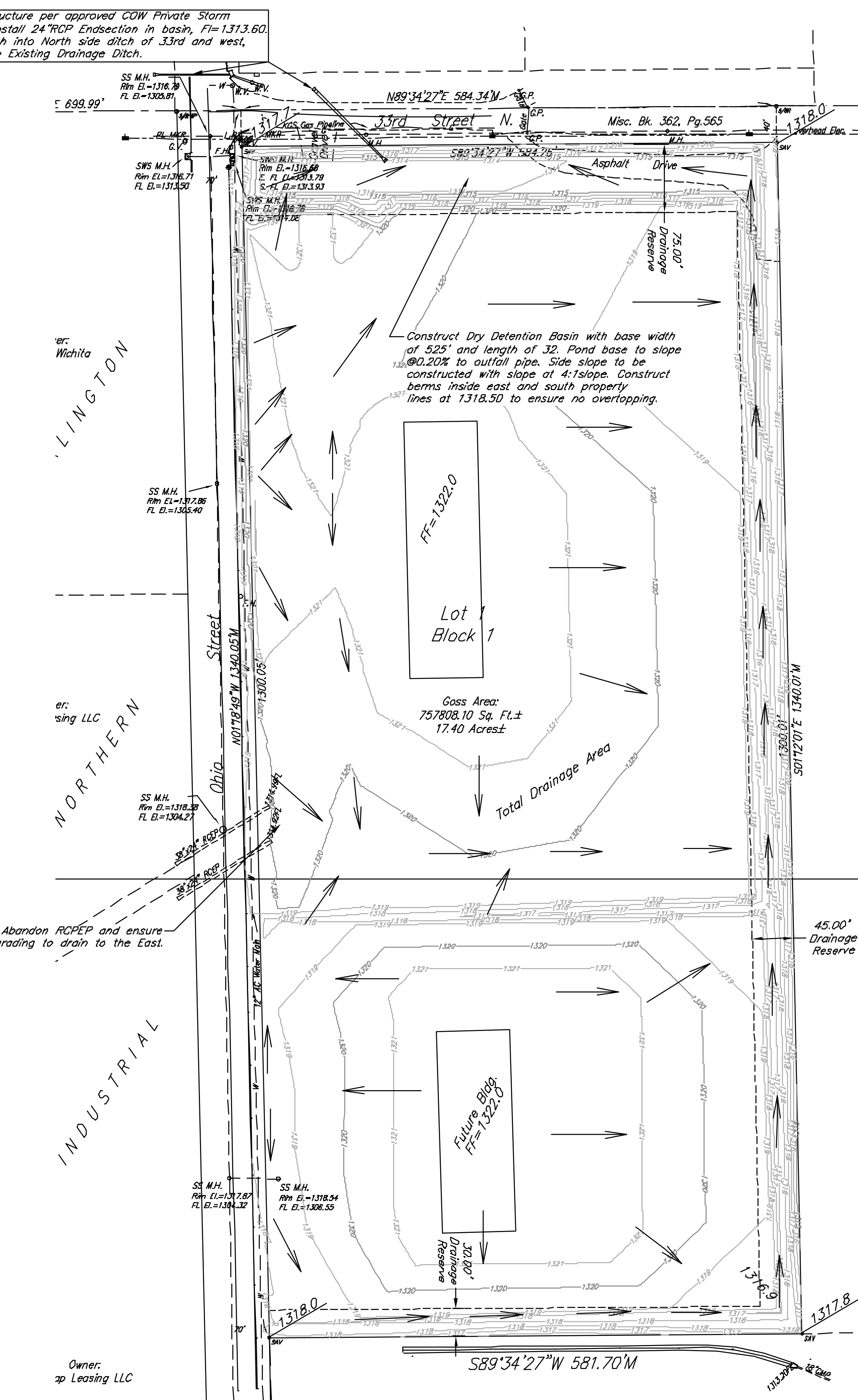


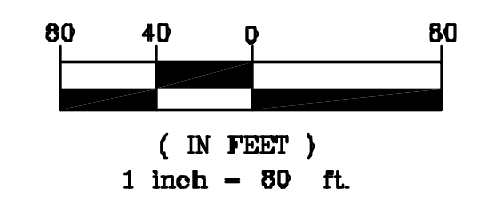
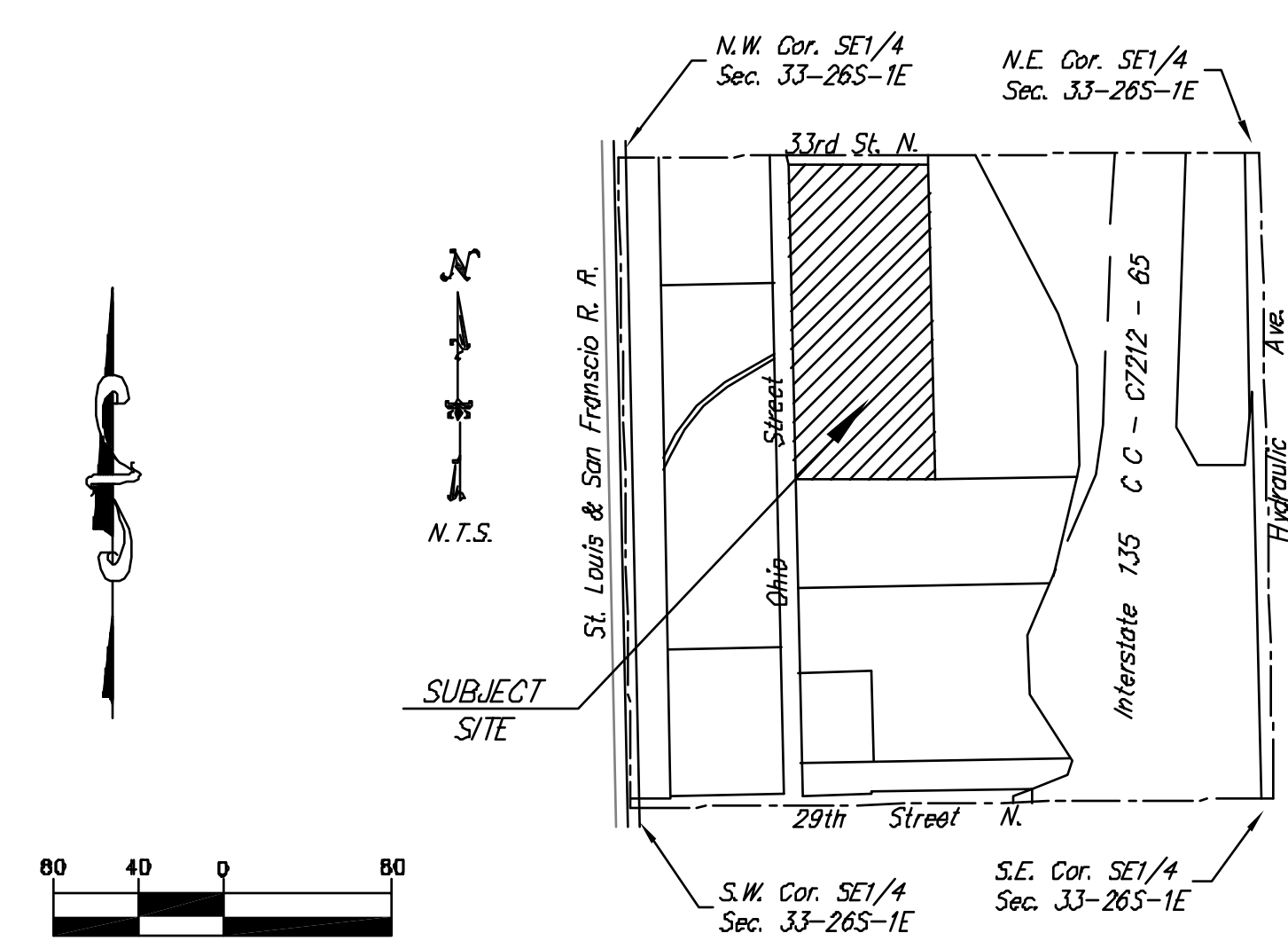
### Existing Drainage Fields



### Proposed Drainage Plan



## DRAINAGE PLAN FOR GROENDYKE ADDITION



Existing Site Drainage

Block #	Acres	Tc	C5	I5	C100	I100	Q5	Q100
West Area	7.05	60.9 min	0.35	2.13	0.65	3.69	5.27cfs	16.99cfs
East Area	10.35	61.1 min	0.35	2.13	0.65	3.69	7.73cfs	24.90cfs
Total Runoff=							13.00cfs	41.89cfs

Proposed Site Drainage

Block #	Acres	Tc	C5	I5	C100	I100	Q5	Q100
Area	17.40	24.0 min	0.73	3.64	0.84	6.00	46.62cfs	88.40cfs
Detention Pond Peak Flow=							15.07cfs	27.31cfs

**Engineer's Note:**  
 Site drainage calculations developed using the Rational Method for peak runoff. "C" & "I" values established from the City of Wichita Design Criteria and Documentation. Detention Pond requirements developed from Stor-Ind Method.

- LEGEND**
- Cedar Tree
  - Fire Hydrant
  - Light Pole
  - Manhole
  - Power Pole
  - Sign
  - Tree
  - Water Valve
  - Kansas Gas Service Line
  - Sanitary Sewer
  - Fence
- 1/2" Rebar (found) PEC LS #65
  - 1/2" Rebar (found)
  - 5/8" Rebar (found)
  - 3/4" Iron Pipe (found)
  - 3/4" Pinched Iron Pipe (found)

**OWNER:** Groendyke Transport Inc.  
**AREA:** 17.40 acres (On Site)  
**Benchmark:**  
 Inlet manhole lid, East side of Seville and South of Dubon. Elev. = 1324.90



516 S. Market,  
 Wichita, KS 67202  
 316/264-0242