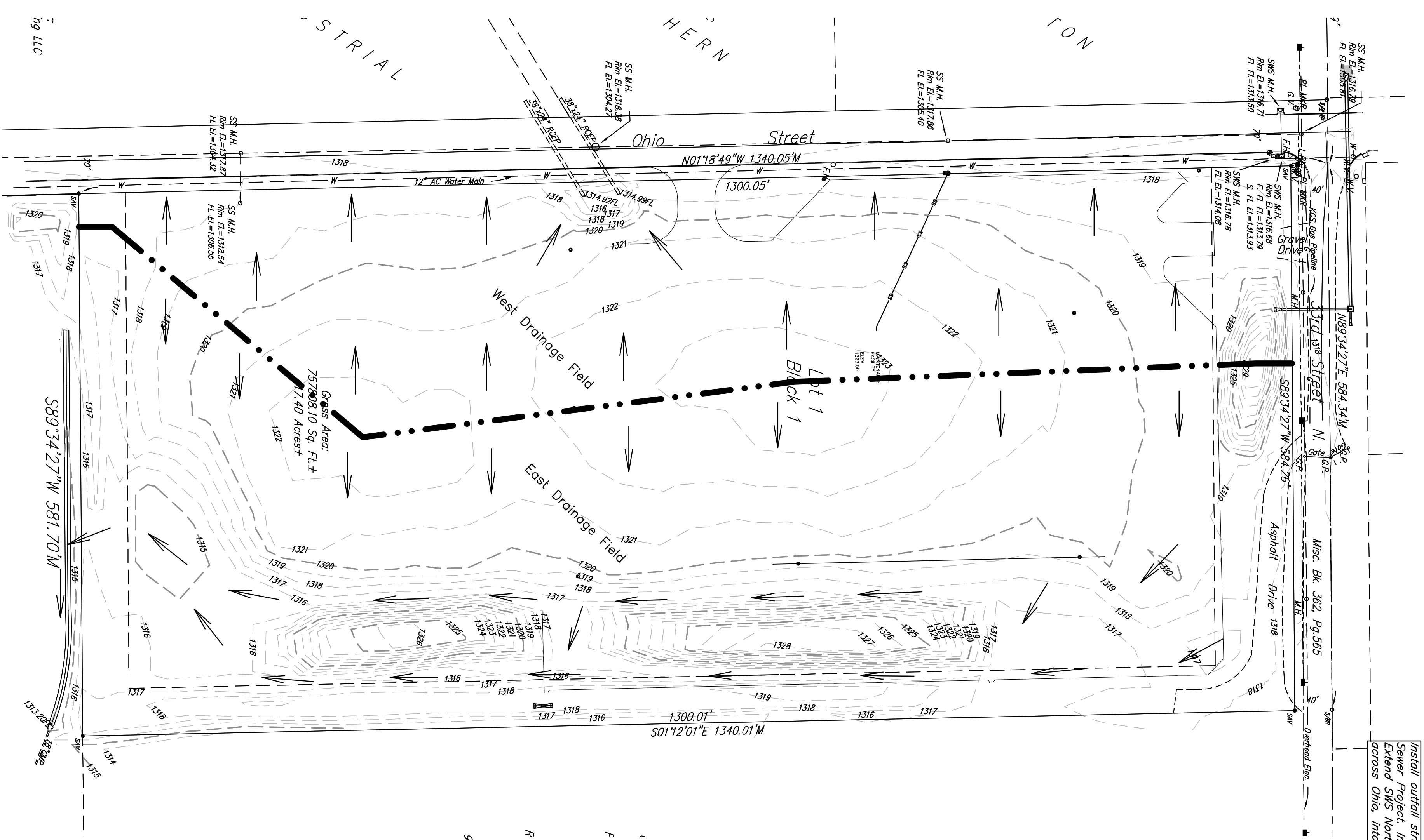
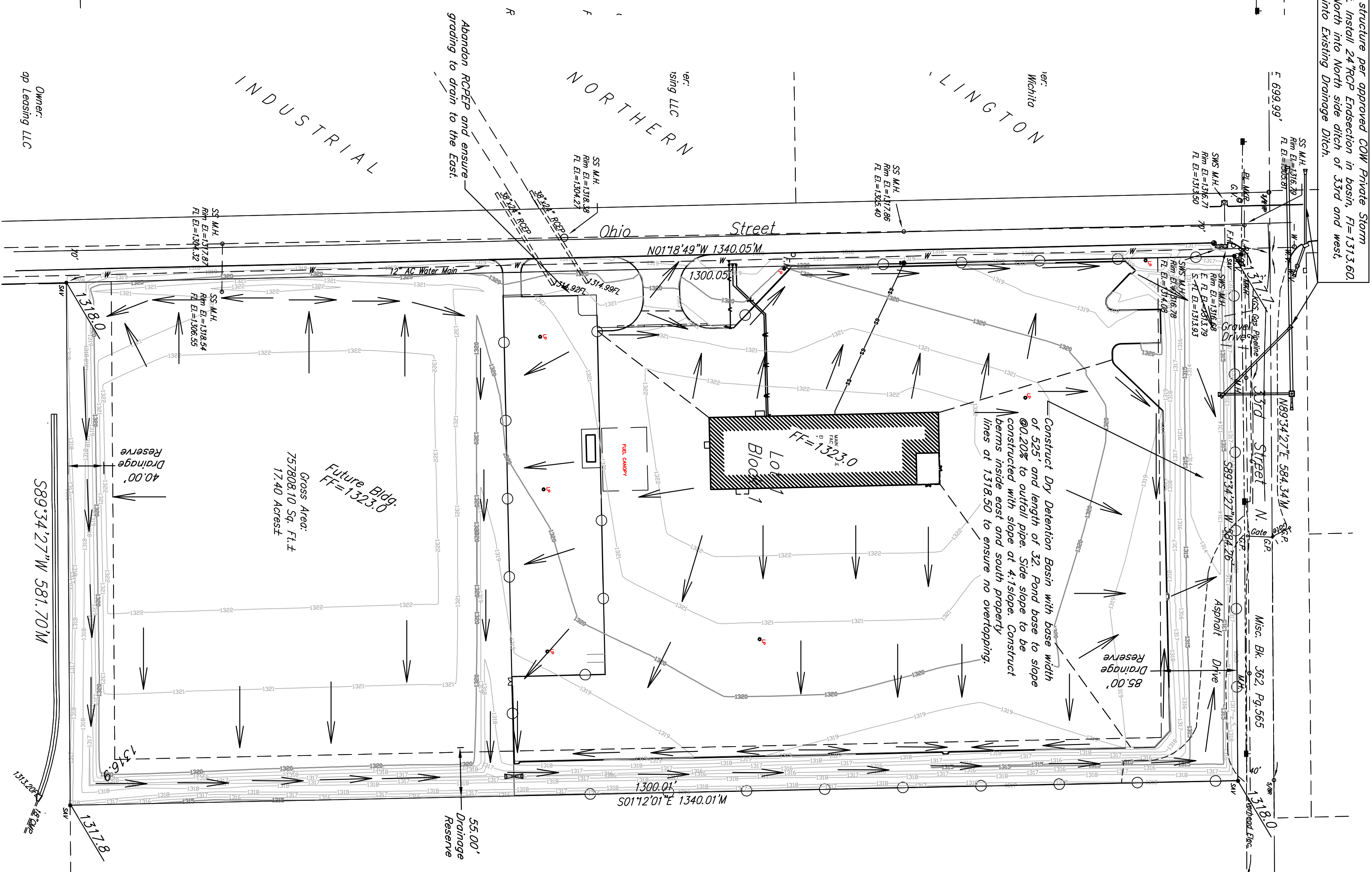


Existing Drainage Fields



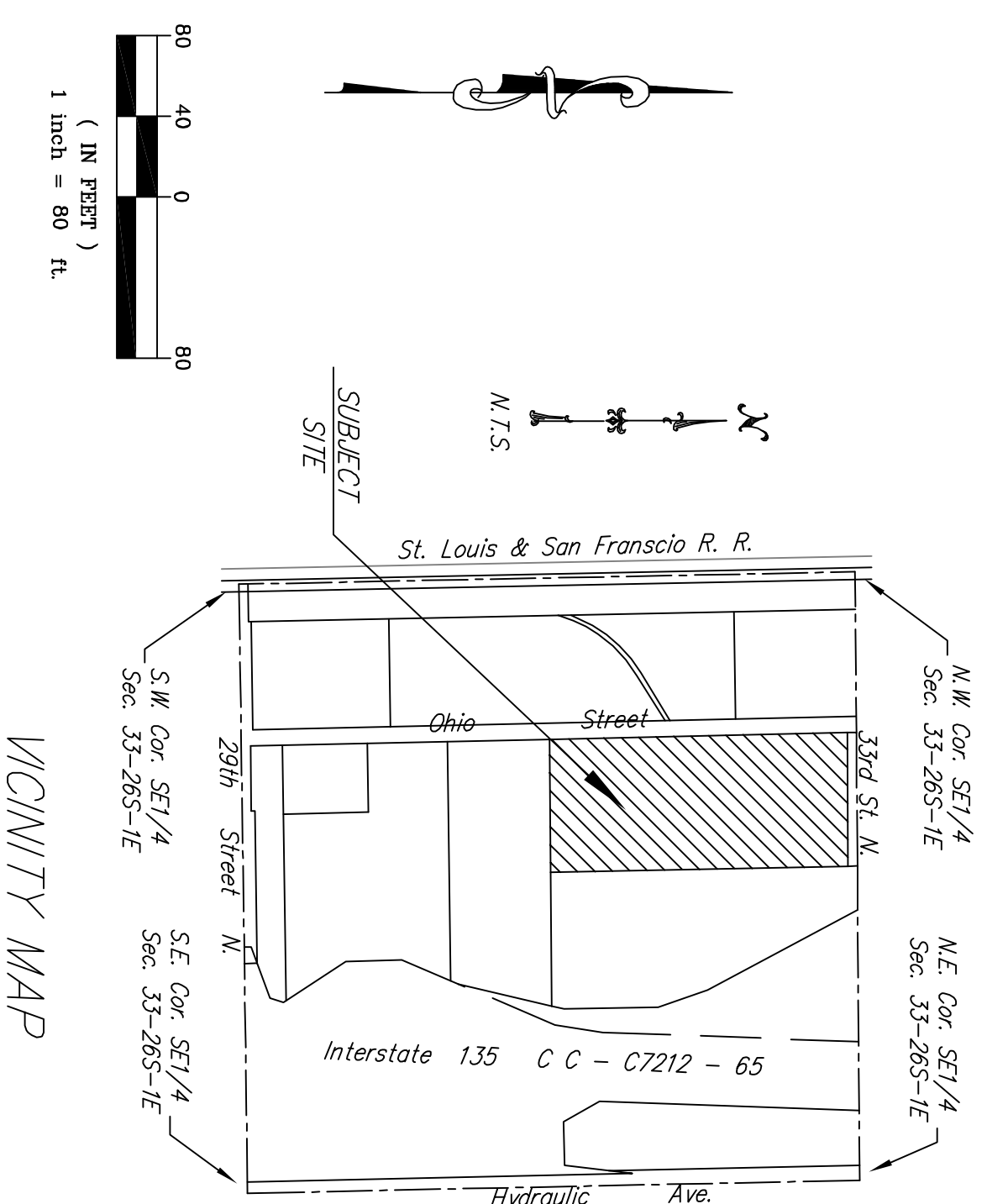
Install outfall structure per approved COW Private Storm Sewer Project, Install 24" CP Ensection in basin, P=1313.60. Extend from the NW side of Block 1, Lot 1, and west across Ohio, into Existing Drainage Ditch.

Proposed Drainage Plan



Construct Dry Detention Basin with base width of 525' and length of 32'. Pond base to slope @0.20% to outfall pipe at 4:1 slope. Construct basins inside east and south property lines of 1318.50 to ensure no overlapping.

DRAINAGE PLAN FOR GROENDYKE ADDITION



Block #	Acres	Tc	C5	15	C100	1100	05	0100
West Area	7.05	60.9 min	0.35	2.13	0.65	3.69	5.27cfs	16.99cfs
East Area	10.35	61.1 min	0.35	2.13	0.65	3.69	7.73cfs	24.90cfs
Total Runoff=							13.00cfs	41.89cfs

Block #	Acres	Tc	C5	15	C100	1100	05	0100
Area	17.40	24.0 min	0.73	3.64	0.94	6.00	46.62cfs	88.40cfs
							15.07cfs	27.31cfs

Engineer's Note:
Site drainage calculations developed using the Rational Method for peak runoff. C₁ & T₁ values established from the City of Wichita Design Criteria and Documentation. Detention Pond requirements developed from Star-Ind Method.

- LEGEND**
- Cedar Tree
 - Fire Hydrant
 - Light Pole
 - Manhole
 - Power Pole
 - Sign
 - Tree
 - Water Valve
 - Kansas Gas Service Line
 - Sanitary Sewer
 - Fence
- OWNER:** Groendyke Transport Inc.
AREA: 17.40 acres (On Site)
- BENCHMARK:**
Inlet manhole lid, East side of Sewer on South of Dubon.
Elev. = 1324.90
- 1/2" Rebar (found) PEC LS #65
 - 1/2" Rebar (found)
 - 5/8" Rebar (found)
 - 3/4" Iron Pipe (found)
 - 3/4" Pinched Iron Pipe (found)

kemiller
engineering

516 S. Market,
Wichita, KS 67202

316/264-0242