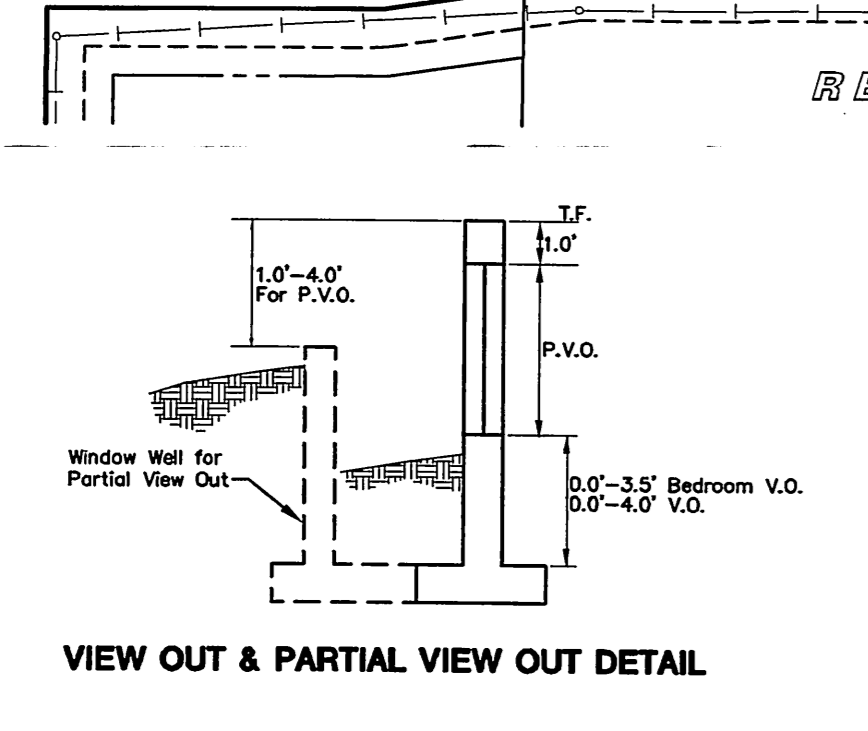


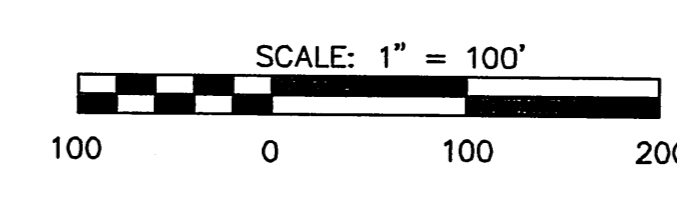
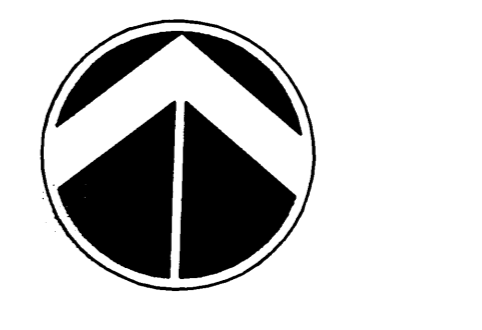
| HAWTHORNE ADDITION | | | | HAWTHORNE 3RD ADDITION (CORRECTION TO PLAT) | | | |
|--------------------|-------|------------------------|------------------|---|-------|------------------------|------------------|
| LOT | BLOCK | ELEVATION (CITY DATUM) | ELEVATION (USGS) | LOT | BLOCK | ELEVATION (CITY DATUM) | ELEVATION (USGS) |
| 2 | 2 | 181.6 | 1369.0 | 1 | 1 | 168.6 | 1356.0 |
| 3 | 2 | 181.6 | 1369.0 | 2 | 1 | 168.6 | 1356.0 |
| 8 | 2 | 175.1 | 1362.5 | 3 | 1 | 168.1 | 1355.5 |
| 9 | 2 | 174.7 | 1362.1 | 4 | 1 | 168.6 | 1357.0 |
| 10 | 2 | 175.1 | 1362.5 | 5 | 1 | 169.6 | 1357.0 |
| 11 | 2 | 178.1 | 1365.5 | 6 | 1 | 169.6 | 1357.0 |
| 12 | 2 | 178.6 | 1366.0 | 7 | 1 | 169.6 | 1357.0 |
| 14 | 2 | 180.1 | 1367.5 | 8 | 1 | 169.6 | 1357.0 |
| 15 | 2 | 180.1 | 1367.5 | 9 | 1 | 171.1 | 1358.5 |
| 16 | 2 | 179.6 | 1367.0 | 10 | 1 | 171.1 | 1358.5 |
| 17 | 2 | 179.1 | 1366.5 | 31 | 1 | 171.1 | 1358.5 |
| 18 | 2 | 179.1 | 1366.5 | 32 | 1 | 171.1 | 1358.5 |
| 19 | 2 | 176.1 | 1363.5 | 33 | 1 | 169.6 | 1357.0 |
| 20 | 2 | 176.1 | 1363.5 | 34 | 1 | 169.6 | 1357.0 |
| 21 | 2 | 175.6 | 1363.0 | 1 | 3 | 177.6 | 1365.0 |
| 22 | 2 | 174.6 | 1362.0 | 6 | 4 | 177.6 | 1365.0 |
| 16 | 6 | 170.9 | 1356.3 | 12 | 4 | 177.6 | 1365.0 |
| 17 | 6 | 170.3 | 1357.7 | 13 | 4 | 177.6 | 1365.0 |
| 18 | 6 | 170.3 | 1357.7 | 23 | 4 | 177.6 | 1365.0 |
| 19 | 6 | 170.3 | 1357.7 | 24 | 4 | 177.6 | 1365.0 |
| 20 | 6 | 170.3 | 1357.7 | 35 | 4 | 177.6 | 1365.0 |
| 21 | 6 | 170.3 | 1357.7 | 36 | 4 | 177.6 | 1365.0 |
| 22 | 6 | 170.3 | 1357.7 | 37 | 4 | 177.6 | 1365.0 |
| 23 | 6 | 170.3 | 1357.7 | 48 | 4 | 177.6 | 1365.0 |
| 24 | 6 | 169.7 | 1357.1 | | | | |
| 25 | 6 | 169.7 | 1357.1 | | | | |
| 26 | 6 | 169.7 | 1357.1 | | | | |
| 27 | 6 | 169.7 | 1357.1 | | | | |
| 28 | 6 | 174.1 | 1361.5 | | | | |
| 30 | 6 | 174.1 | 1361.5 | | | | |
| 31 | 6 | 174.1 | 1361.5 | | | | |
| 32 | 6 | 176.1 | 1363.5 | | | | |

| HAWTHORNE 2ND ADDITION (CORRECTION TO PLAT) | | | | HAWTHORNE 4TH ADDITION (CORRECTION TO PLAT) | | | |
|---|-------|------------------------|------------------|---|-------|------------------------|------------------|
| LOT | BLOCK | ELEVATION (CITY DATUM) | ELEVATION (USGS) | LOT | BLOCK | ELEVATION (CITY DATUM) | ELEVATION (USGS) |
| 1 | 1 | 173.6 | 1361.0 | 1 | 1 | 171.3 | 1358.7 |
| 6 | 1 | 173.6 | 1361.0 | 3 | 1 | 171.2 | 1358.6 |
| 7 | 1 | 173.6 | 1361.0 | 4 | 1 | 171.2 | 1358.6 |
| 9 | 1 | 173.6 | 1361.0 | 5 | 1 | 171.2 | 1358.6 |
| 10 | 1 | 173.6 | 1361.0 | 6 | 1 | 171.2 | 1358.6 |
| 11 | 1 | 174.1 | 1361.5 | 7 | 1 | 171.2 | 1358.6 |
| 22 | 1 | 174.7 | 1362.1 | 8 | 1 | 171.2 | 1358.6 |
| 23 | 1 | 175.9 | 1363.3 | 9 | 1 | 167.7 | 1355.0 |
| 8 | 2 | 177.6 | 1365.0 | | | | |



- LEGEND**
- CONIFEROUS TREE & DIAMETER
 - DECIDUOUS TREE & DIAMETER
 - SIGN
 - BUSH
 - EDGE OF TREES
 - SANITARY SEWER MANHOLE
 - GAS METER
 - POLE
 - GATE
 - LIGHT POLE
 - FIRE HYDRANT
 - WATER VALVE
 - WATER METER
 - POWER POLE AND GUY ANCHOR
 - SECTION CORNER
 - BENCHMARK
 - WALKOUT
 - NEWCUT
 - PARTIAL NEWCUT
 - TERRACED WALKOUT
 - SPOT ELEV.
 - PROP. HOUSE ELEV.
 - EXIST. PLAT PLAN HOUSE ELEV.
 - STORM SEWER PIPE
 - WATER LINE
 - SANITARY SEWER LINE
 - GAS LINE
 - TELEPHONE LINE
 - OVERHEAD ELECTRIC LINE
 - OVERHEAD TELEPHONE
 - OVERHEAD ELECTRIC
 - UNDERGROUND FIBER OPTIC CABLE
 - HIGH PRESSURE GAS PIPELINE
 - WALL
 - FENCE
 - TELEPHONE RISER
 - INLET

- BENCHMARK**
- BM#1 COW Brass Disk in Concrete Curb Located on the East Return of the NE Quadrant of Rosemont and Camden Chase, Hawthorne Second Addition. ELEV. = 182.28 (CITY DATUM) 1369.675 NGVD
 - BM#2 Top of iron at SW. Cor. SW. ¼, Sec. 2, T27S, R2E, (127th St. E. & 21st St. N.). ELEV. = 198.01 (CITY DATUM) 1385.41 NGVD



Revision Date: May 2006
 Revision Date: March 2006
 Revision Date: December 2004

MKEC HAWTHORNE ADDITIONS
 ENGINEERING LOT GRADING PLAN
 CONSULTANTS, INC. SHEET TITLE

411 N. WEBB ROAD KLA JFL
 WICHITA, K.S. 67206 DESIGN BY. CHECKED BY.
 316-684-9600 DATE NOVEMBER 2004 02167 1 / 1
 SHEET NO.