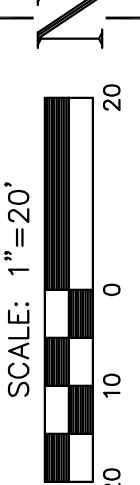
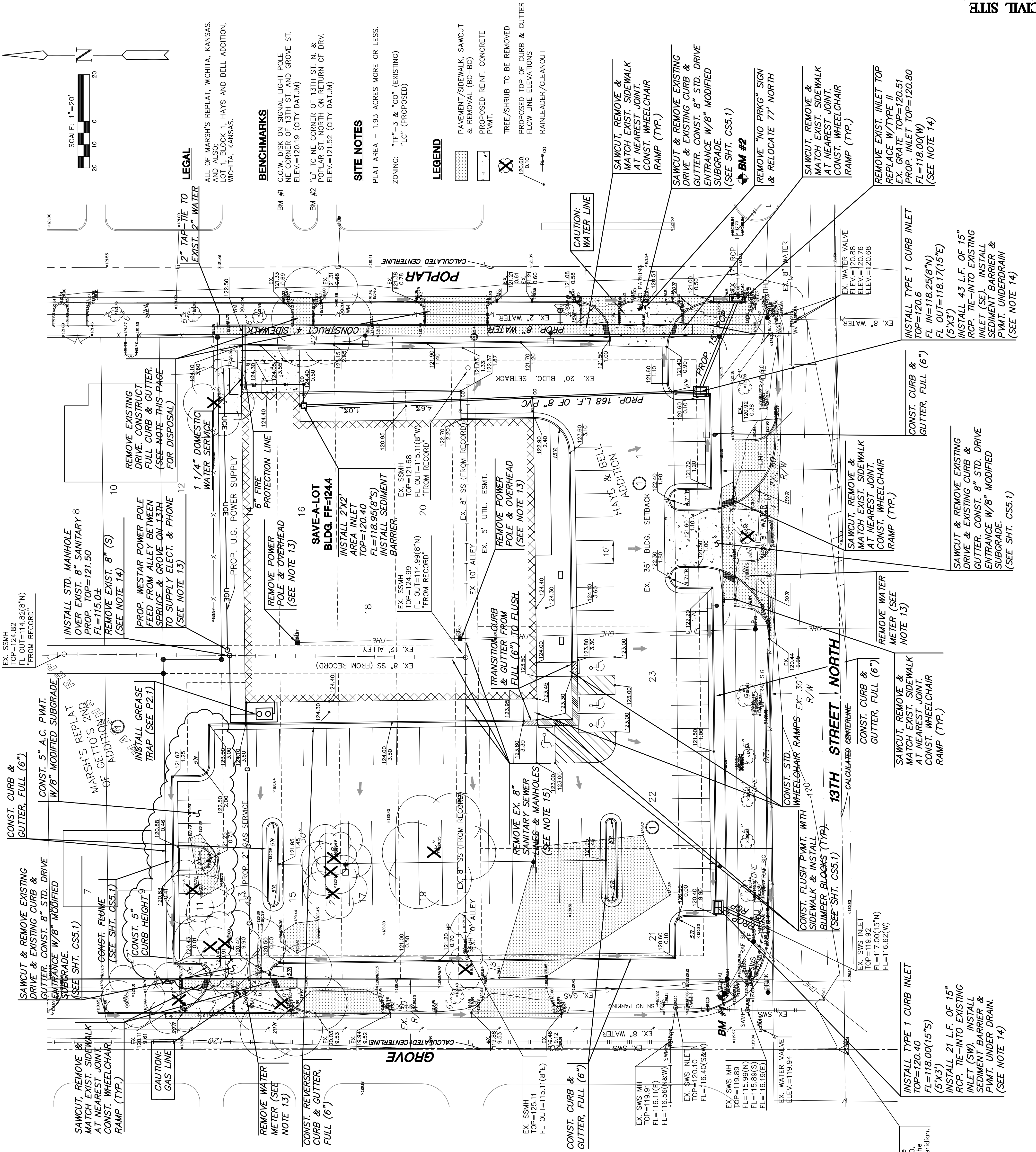


GENERAL NOTES

- UNLESS SHOWN OR STATED OTHERWISE ON THESE DRAWINGS, MATERIALS AND CONSTRUCTION SHALL BE IN ACCORDANCE WITH CITY OF WICHITA STANDARD SPECIFICATIONS.
- CONTRACTOR WILL BE REQUIRED TO PROVIDE A MINIMUM ADVANCE NOTICE OF SEVENTY-TWO (72) HOURS TO UTILITIES COMPANIES BEFORE ANY EXCAVATION AS FOLLOWS:
KANSAS ONE-CALL 1-800-344-7233
OR 687-2470 (LOCAL WICHITA)
EMERGENCY:
- | | |
|--------------------------------------|--------------|
| SBC (TELEPHONE) | 800-870-8390 |
| GOV. COMMUNICATIONS (CABLE) | 282-8661 |
| WICHITA WATER & SEWER | 282-8660 |
| KANSAS GAS SERVICE (GAS) | 832-3100 |
| CITY OF WICHITA WATER & SEWER MAINT. | 282-6000 |
| AQUILA (GAS) | 946-0096 |
- THE CONTRACTOR SHALL BE RESPONSIBLE FOR PRESERVING PROPERTY IRONS. THE CONTRACTOR WILL BE REQUIRED TO OR DESTROYED BY HIS CONSTRUCTION OPERATIONS, SUCH IRONS SHALL BE RE-ESTABLISHED BY A LICENSED LAND SURVEYOR IN ACCORDANCE WITH STATE LAWS.
- EXISTING UTILITIES AND THEIR LOCATIONS, AS SHOWN ON THE DESIGN LOCATION INFORMATION HAS BEEN OBTAINED FROM THE VARIOUS UTILITY COMPANIES AND IS EITHER FROM COMPANY RECORD DRAWINGS OR COMPANY PROVIDED FIELD LOCATIONS. THE PLAN LOCATIONS SHOWN ARE NOT GUARANTEED. ADDITIONAL EXISTING UTILITIES MAY ALSO BE ENCOUNTERED.
- RUBBLE FROM THE REMOVAL OF MISCELLANEOUS STRUCTURES AND EXCESS EXCAVATION WHICH IS TO BE WASTED SHALL BE DISPOSED ON SITES TO BE PROVIDED BY THE CONTRACTOR. THESE SITES SHALL BE APPROVED BY THE ENGINEER AS TO SUITABILITY, APPEARANCE AND SITE LOCATION. EXISTING UTILITIES THAT, IN THE OPINION OF THE ENGINEER, ARE NOT TO BE REMOVED MUST BE APPROVED BY THE KANSAS DEPARTMENT OF HEALTH AND ENVIRONMENT. MATERIAL EITHER STOCKPILED OR DISPOSED OF IN A FLOOD PLAIN WOULD REQUIRE A KANSAS STATE BOARD OF AGRICULTURE PERMIT. ANY MATERIAL DUMPED IN WATERS OF THE UNITED STATES OR REGULATIONS. ANY MATERIAL BURIED OR STOCKPILED BEYOND APPROVED CONSTRUCTION LIMITS WOULD REQUIRE ADDITIONAL ARCHAEOLOGICAL INVESTIGATIONS UNLESS BURIED IN A PREVIOUSLY APPROVED BORROW LOCATION.
- A SAW CUT OF AT LEAST ONE-HALF THE DEPTH OF THE EXISTING SURFACE COURSE OR ONE-FOURTH THE DEPTH OF THE EXISTING TOTAL PAVEMENT THICKNESS SHALL BE PROVIDED AT LOCATIONS WHERE PROPOSED CONSTRUCTION ABUTS AN EXISTING SURFACE OR PAVEMENT FOR WHICH PARTIAL REMOVAL OF THAT SURFACE OR PAVEMENT IS REQUIRED. SAW JOINTS TO FACILITATE REMOVAL WITHIN THREE (3) FEET OF EXISTING JOINTS WILL NOT BE PERMITTED AND THE EXISTING JOINTS SHALL BE REPAIRED. SAW CUTS WILL NOT BE PAID FOR DIRECTLY AND THIS COST SHALL BE CONSIDERED AS SUBSIDIARY TO THE REMOVAL OF SURFACE OR PAVEMENT.
- CONTRACTOR SHALL REMOVE ALL CONCRETE PAVEMENT, SIDEWALKS, CURBS AND AREAS OF EXCESS IMPROVEMENTS, AND LEGALLY DISPOSE OF OFF SITE. (SEE NOTE 6).
- ALL FOOTINGS AND/OR FOUNDATIONS LOCATED WITHIN THE CONSTRUCTION LIMITS SHALL BE REMOVED TO A MINIMUM DEPTH OF 18" BELOW SUBGRADE IN AREAS TO BE PAVED OR REMOVED COMPLETELY IN AREAS TO BE SEEDDED.
- TREES/SHRUBS ARE AN IMPORTANT ASSET TO THIS DEVELOPMENT. ONLY TREES/SHRUBS WITH TRUNKS (VINC) WITHIN THE PAVEMENT AREA MAY BE REMOVED. EVERY EFFORT SHALL BE MADE TO SAVE ALL OTHERS OUTSIDE THE CURB/SIDEWALK LINES.
- EQUIPMENT AND CONSTRUCTION MATERIALS SHALL REMAIN OUT OF AND AWAY FROM TREE DRIFLINES WHEREVER POSSIBLE SO AS NOT TO COMPACT THE ROOT ZONE OR DAMAGE THE TREE.
- CONTRACTOR SHALL COORDINATE WITH ENGINEER ON THE REMOVAL OF TREES/SHRUBS OUTSIDE BACK OF CURB/SIDEWALK. NO TREES/SHRUBS SHALL BE REMOVED PRIOR TO A MEETING ON SITE WITH ENGINEER.
- CONTRACTOR SHALL BE RESPONSIBLE FOR THE COORDINATION AND ASSOCIATED WITH EXTENSION, RELOCATION, OR ABANDONMENT AND/OR REMOVAL OF ALL UTILITIES. ARRANGEMENTS SHALL BE MADE WITH UTILITY COMPANIES AND ALL FEES SHALL BE PAID BY THE CONTRACTOR.
- MKEC WILL PROVIDE CONSTRUCTION PLANS PER CITY OF WICHITA REQUIREMENTS. THE INSTALLATION OF ANY AND ALL WATER, SEWER, OR SANITARY SEWER SHALL BE RESPONSIBLE FOR INSTALLATION AND CITY REQUIRED STAKING, INSPECTION AND AS BUILT DRAWINGS.
- CONTRACTOR SHALL REFER TO "GEO-TECHNICAL ENGINEERING REPORT" FOR SUBSURFACE CONDITIONS AND TREATMENT.
- REFERS TO "SITE SURVEY PLAN" (SHEET S51.1) FOR FURTHER DETAIL ON EXISTING SITE CONDITIONS.

SW COR., of the
SE ¼ of SEC. 10,
127S, 19E., of the
6th Principle Meridian.



LEGAL

ALL OF MARSH'S REPLAT, WICHITA, KANSAS, AND ALSO: LOT 1, BLOCK 1, HAYS AND BELL ADDITION, WICHITA, KANSAS.

BENCHMARKS

BM #1
C.O.W. DISK ON SIGNAL LIGHT POLE NE CORNER OF 13TH ST. AND GROVE ST. ELEV.=120.19 (CITY DATUM)
BM #2
"C" TO NE CORNER OF 13TH ST. N. & POPLAR ST. NORTH ON RETURN OF DRY. ELEV.=121.52 (CITY DATUM)

SITE NOTES

PLAT AREA - 1.93 ACRES MORE OR LESS.
ZONING: "TF"-3 & "GO" (EXISTING)
"LC" (PROPOSED)

LEGEND

- PAVEMENT/SIDEWALK, SAWCUT & REMOVAL (BC-BC)
- PROPOSED REINF. CONCRETE P.W.M.T.
- TREE/SHRUB TO BE REMOVED
- PROPOSED TOP OF CURB & GUTTER FLOW LINE ELEVATIONS
- RAINLEADER/CLEANOUT

Save-A-Lot Food Store 13th & Grove

Wilson Darnell Hamm P.A.
105 N. Washington Wichita, Kansas 67202
ph 316.262.9700 fx 316.262.0002
www.wdndesign.com

Wichita, Kansas

PRINTS ISSUED
08/19/05
FOR BIDDING

WPN No. 03001
date: DAC
checked: JTC



copyright
Wilson Darnell Hamm P.A.

CIVIL SITE