

DRAINAGE PLAN FOR HOLLAND ADDITION WICHITA SEDGWICK COUNTY KANSAS

LEGEND

- = Section Corner
- = 3/4" Iron Pipe (found)
- = 5/8" Rebar AMINC CLS #104 (set)
- (C) = Calculated
- (M) = Measured
- = Assumed Drainage Break Line

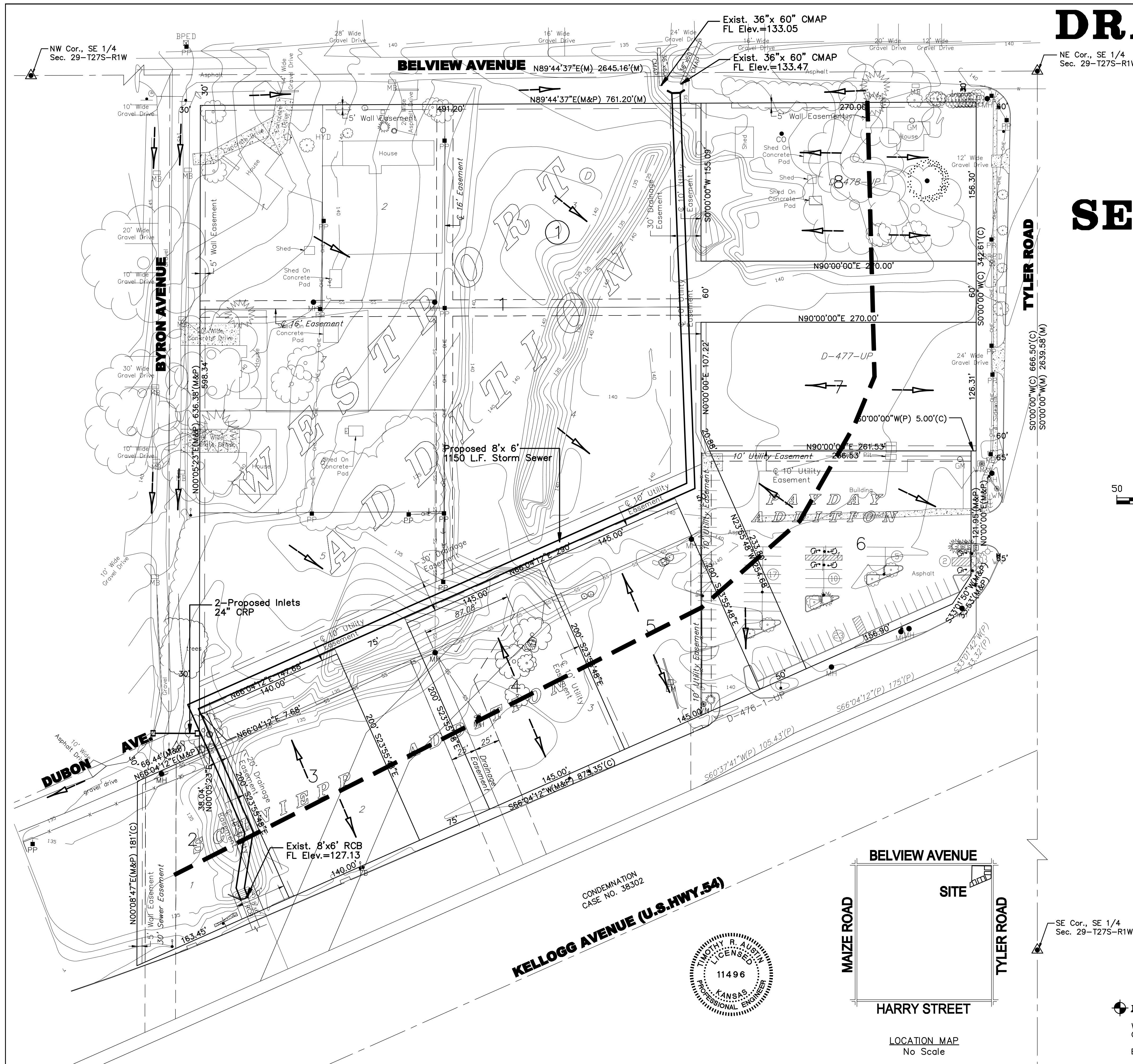
SCALE



Area #	Area	b	l ₁₀₀	Undeveloped C=0.35		Developed C=0.85	
				Q _s	Q ₁₀₀	Q _s	Q ₁₀₀
1	11.59	4.56	7.37	18.5	29.9	44.9	72.6
TOTAL	11.59			18.5	29.9	44.9	72.6

NOTES:

- Cross-drainage agreement required for subsequent sub-divisions.
- See drainage study by Young & Associates dated 3-15-04
- Site grading and drainage plans to be designed by a licensed professional engineer.
- The drainage plan will need to be updated and filed with city engineering at the time of building permit(s).
- Min. Pad Elev.=137.0(City Datum);
1324.40 (MSL)



West St. and 47th St. South
C.O.W. Benchmark. NE corner of intersection.
Elev. 1282.09 MSL, 94.69 City Datum



POE & ASSOCIATES, INC.
CONSULTING ENGINEERS
5940 E. Central, Suite 200 • Wichita, KS 67208-4242
Phone 316/685-4114 • FAX 316/685-4444