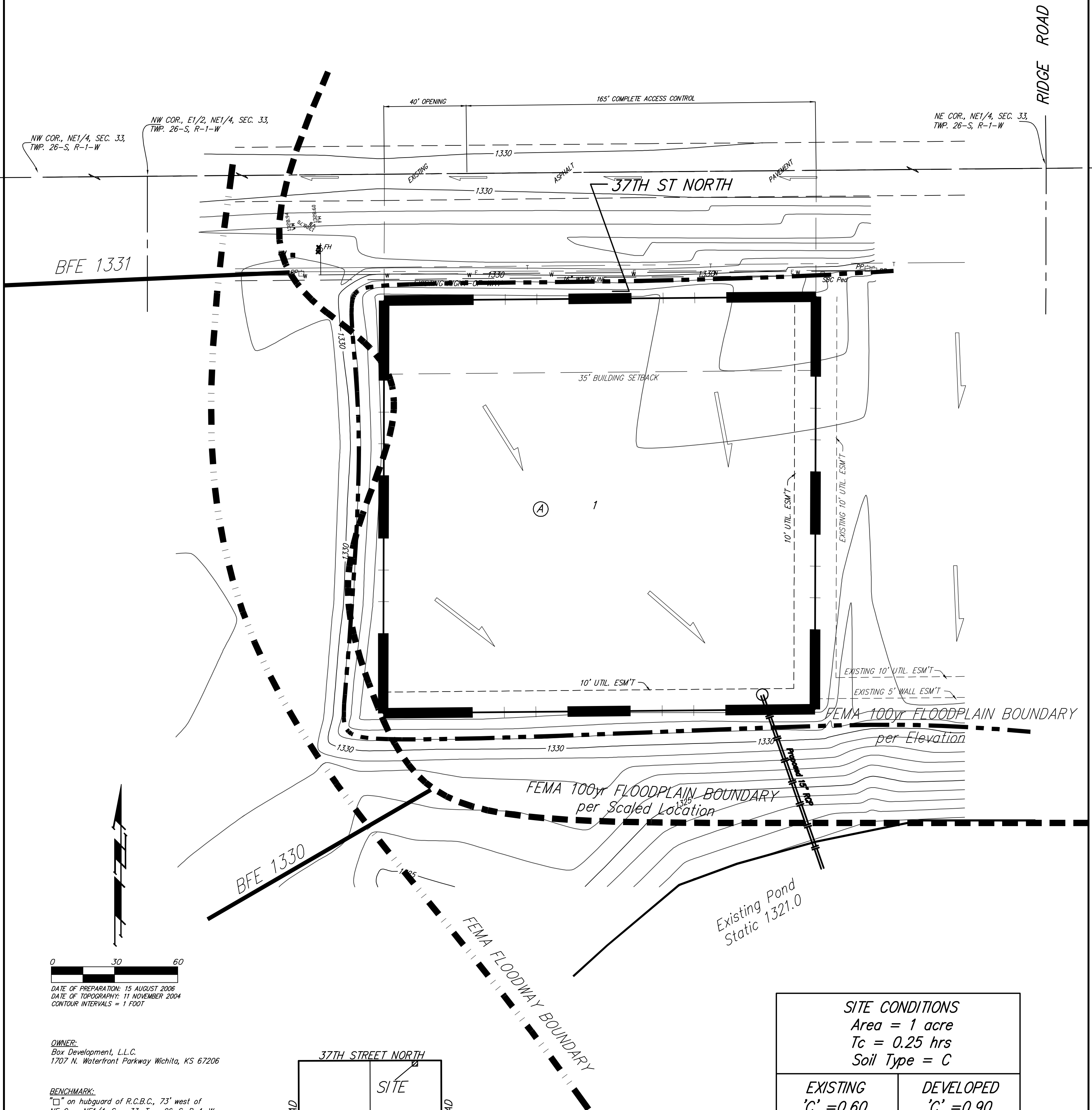


DRAINAGE PLAN

HOSKINSON 3RD ADDITION

WICHITA, SEDGWICK COUNTY, KANSAS

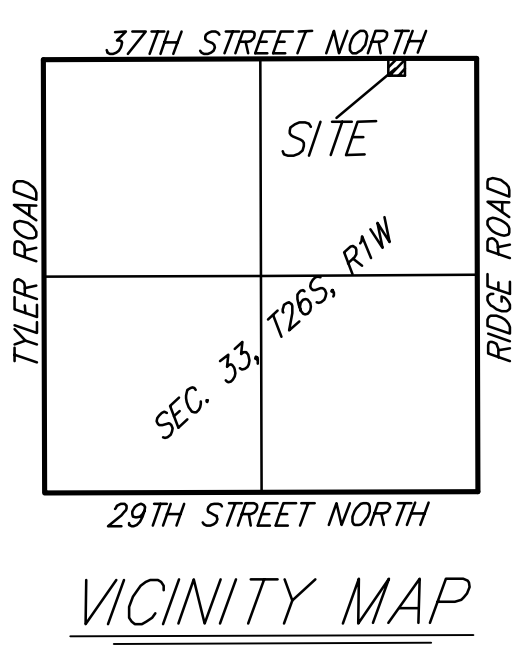


0 30 60
 DATE OF PREPARATION: 15 AUGUST 2006
 DATE OF TOPOGRAPHY: 11 NOVEMBER 2004
 CONTOUR INTERVALS = 1 FOOT

OWNER:
 Box Development, L.L.C.
 1707 N. Waterfront Parkway Wichita, KS 67206

BENCHMARK:
 "□" on hubguard of R.C.B.C., 73' west of
 NE Cor., NE1/4, Sec. 33, Twp. 26-S, R-1-W.
 Elev. = 1331.52 NGVD29
 Elev. = 144.12 City Datum

MINIMUM BUILDING PAD ELEVATIONS FOR LOWEST OPENING TO THE STRUCTURES		
LOT	BLOCK	ELEVATION
		MSL
1	A	1333.0



FEMA Floodplain and Floodway Boundaries scaled per location per FEMA FIRM Panel 125 of 300. Revised to reflect LOMR Case #06-07-B015P, May 16, 2006.

SITE CONDITIONS	
Area = 1 acre	
Tc = 0.25 hrs	
Soil Type = C	
EXISTING	DEVELOPED
'C' = 0.60	'C' = 0.90
Q2 = 2.3 cfs	Q2 = 3.5 cfs
Q5 = 2.7 cfs	Q5 = 4.1 cfs
Q100 = 4.4 cfs	Q100 = 6.6 cfs