

NOTES:

1. Excess runoff from the 100-year design storm will be detained and/or retained on site by means of parking lot and raingarden detention, rooftop or underground storage, or porous pavement.
2. Parking lot detention will be limited to 8" depth, except that every parking space where 8" depth may be exceeded shall have a post-mounted warning sign at the front of the stall, clearly noting: "WARNING - STORMWATER PONDING AREA".
3. Excess runoff will be calculated on the basis of the change in impervious area from the existing (partly residential) land use to the proposed land use as indicated on the final site plan.
4. Final drainage system design, including runoff and detention calculations, is to be submitted to the Engineering Division for approval, prior to or at the time of building and site plan review by OCI.
5. Peak Discharge to be limited to: 14.6 cfs (100-yr)
7.5 cfs (5-yr), 6.1 cfs (2-yr).

EXISTING CONDITIONS

IMPERVIOUS AREA = 52%
 CN = 82
 100-YR 24-HR STORM (7.8")
 RUNOFF FROM CN = 5.6"
 VOLUME OF RUNOFF = 1.4 Ac.-Ft.
 100-yr D.A. = 3.0 Acres
 $T_c = 15$ Min. $I_{100} = 7.37$ /hr $C_{100} = .66$
 $Q_{100} = 14.6$ cfs
 5-yr D.A. = 3.0 Acres
 $T_c = 15$ Min. $I_5 = 4.56$ /hr $C_5 = .55$
 $Q_5 = 7.5$ cfs
 2-yr D.A. = 3.0 Acres
 $T_c = 15$ Min. $I_2 = 3.83$ /hr $C_2 = .53$
 $Q_2 = 6.1$ cfs

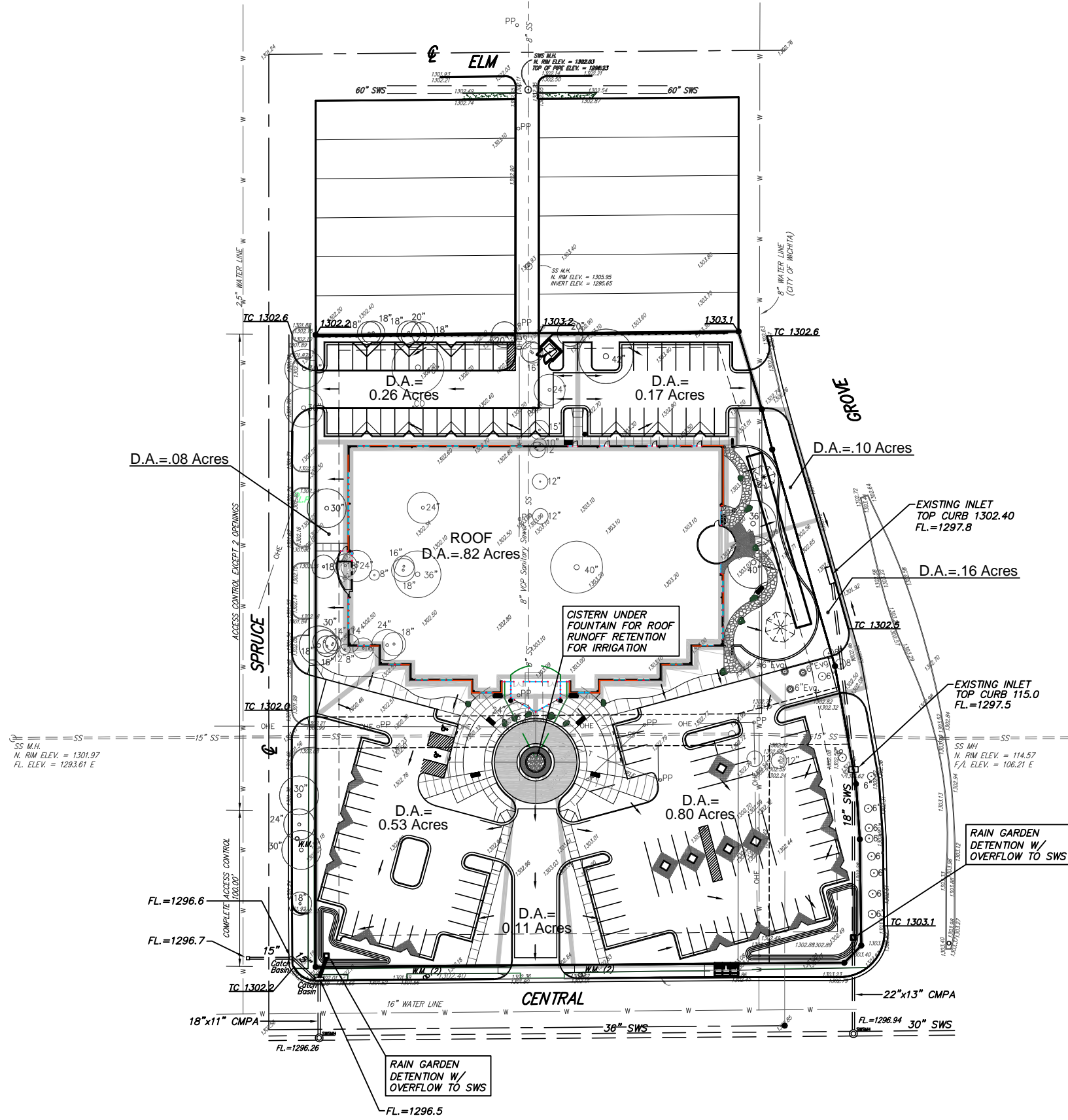
PROPOSED CONDITIONS

IMPERVIOUS AREA = 80%
 CN = 90
 100-YR 24-HR STORM (7.8")
 RUNOFF FROM CN = 5.6"
 VOLUME OF RUNOFF = 1.65 Ac.-Ft.
 D.A. = 3.0 Acres
 $T_c = 15$ Min. $I_{100} = 7.37$ /hr $C_{100} = .83$
 $Q_{100} = 18.4$ cfs
 5-yr D.A. = 3.0 Acres
 $T_c = 15$ Min. $I_5 = 4.56$ /hr $C_5 = .73$
 $Q_5 = 10.0$ cfs
 2-yr D.A. = 3.0 Acres
 $T_c = 15$ Min. $I_2 = 3.83$ /hr $C_2 = .71$
 $Q_2 = 8.2$ cfs

BENCHMARK:

On Site B.M.: "a" Cut Top of curb, S. curb return at N.E. Corner of Central & Spruce
 Elev. = 114.55 (City of Wichita Datum)
 Elev. = 1301.95 (M.S.L.)

REVISED: 1/24/07
 REVISED: 1/23/07



**HUNTER HEALTH CLINIC 2ND ADDITION
 DRAINAGE PLAN
 WICHITA, KANSAS**

<p>Ruggles & Bohm, P.A. Engineering, Surveying, Land Planning 824 North Main Wichita, Kansas 67203 www.rbkansas.com</p>	DESIGN	TCR	SHEET 1 OF 1
	DRAWN	EJB	
	REVIEW	UTILITY	
	DATE	Jan. 22, 2007	
DRAWING FILE	PROJECT NUMBER		
Drainage Plan			