

Scale: 1" = 60'

### Benchmarks

BM #1: C.O.W. benchmark disk.  
56' E and 55' N of CL 135th St. W. & 13th St. N.  
Elev. = 167.83 (City Datum)

BM #2: C.O.W. benchmark disk.  
1/2 mile south of 13th St.  
39' east of CL 135TH St. 18'  
south of hedge east.  
Elev. = 159.71 (City Datum)

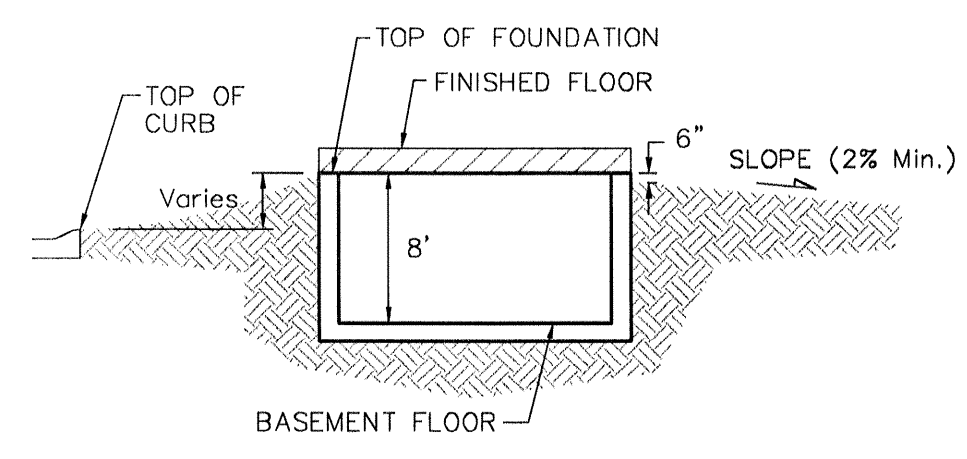
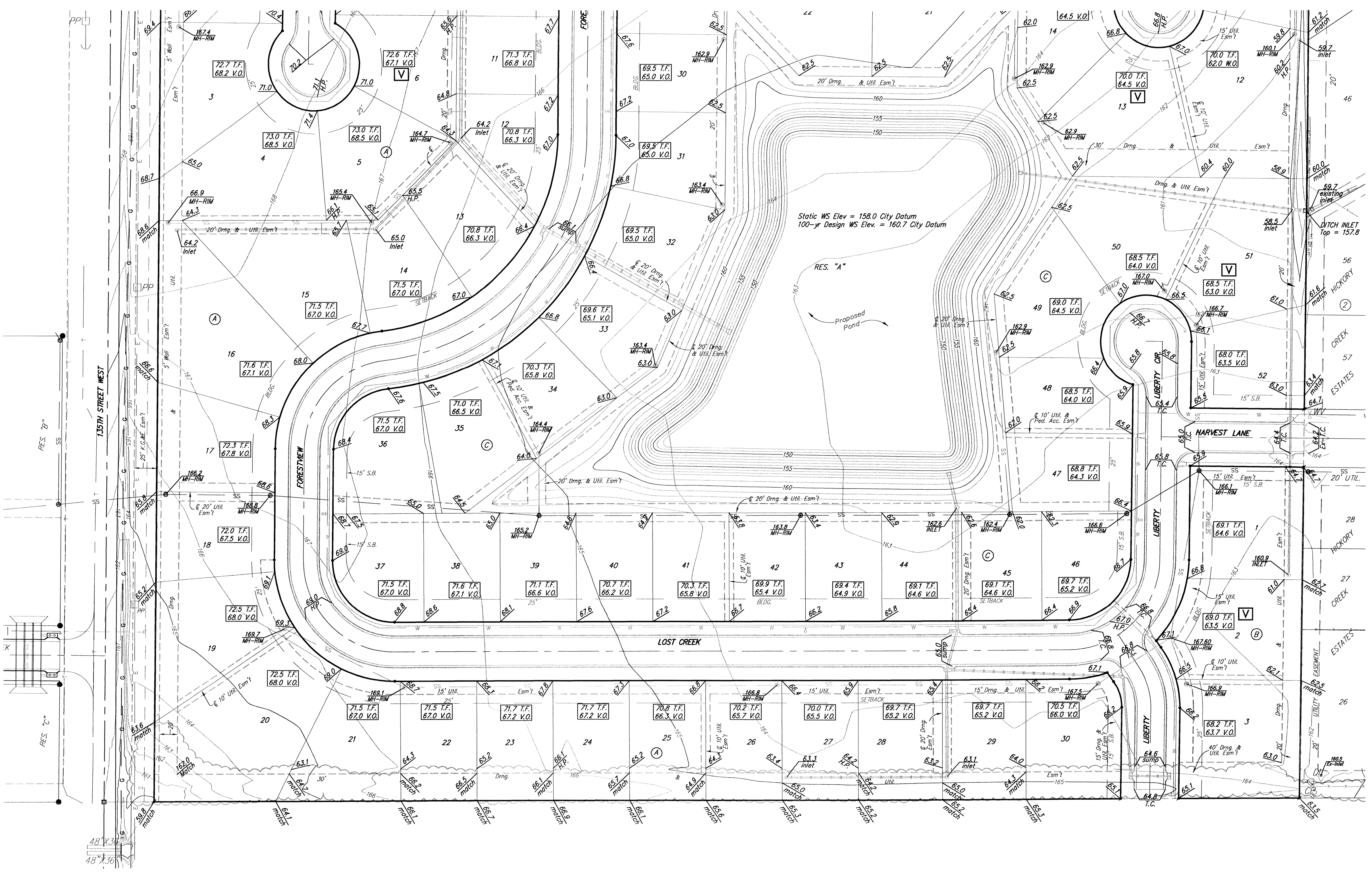
NOTES:  
Proposed Top of Foundation Elevations Are Shown On Plans. Contractor to Set Finished Floor Elevations.

All Street Elevations Shown on Plans Are for Top of Curb (Full-Height).

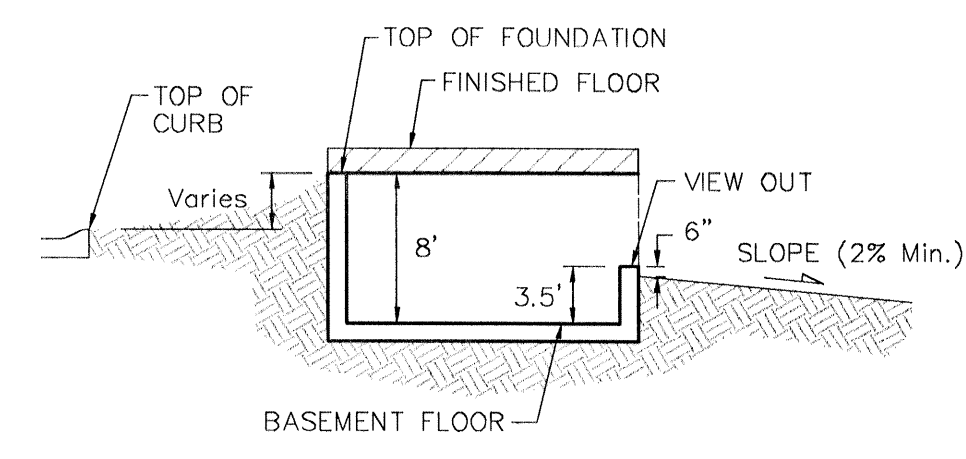
This Grading Plan is Designed with Walk-out & View-Out Basements. Elevations Shown as (XXX V.O. or XXX W.O.)

Lot dimensions have been omitted on this plan, refer to the recorded plat for this information.

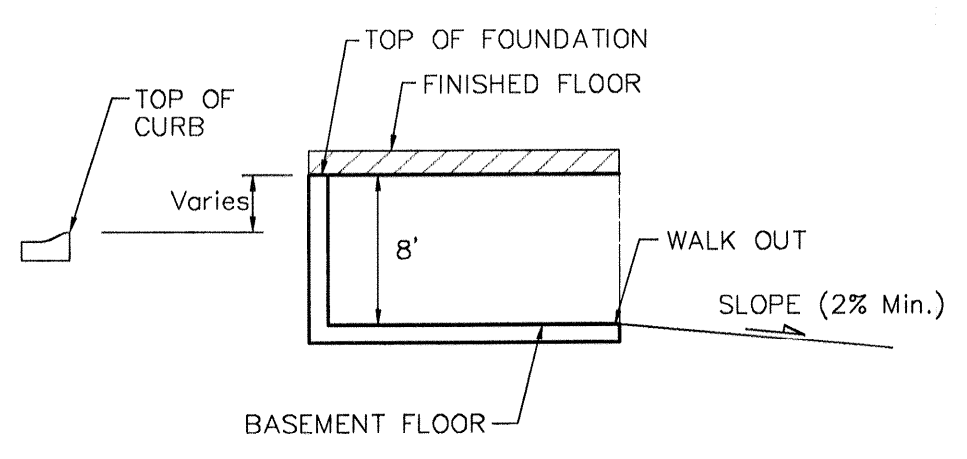
□ Indicates Non-Typical View-Out (Use 5.5' From T.F. to V.O.)



TYPICAL NON-VIEW OUT DETAIL  
NO SCALE



TYPICAL VIEW OUT DETAIL  
NO SCALE



TYPICAL WALK OUT DETAIL  
NO SCALE

		Liberty Park 3rd Addition	
		<b>Grading Plan</b>	
<small>Baughman Company, P.A. 315 Ellis St. Wichita, KS 67211 P 316-262-7271 F 316-262-0149 ENGINEERING   SURVEYING   PLANNING   LANDSCAPE ARCHITECTURE</small>			
PROJECT NUMBER	JAK	DESIGN	BLG/JAK
REVISIONS	JAK	APPROVED	DATE 11/04/05
7/31/06 Phase 1 Street Grades		SCALE 1" = 60' SHEET	
		<b>1 OF 2</b>	

