

Benchmarks

BM #1: C.O.W. benchmark disk.
56' E and 55' N of CL 135th St. W. & 13th St. N.
Elev. = 167.83 (City Datum)

BM #2: C.O.W. benchmark disk.
1/2 mile south of 13th St.
39' east of CL 135th St. 18'
south of hedge east.
Elev. = 159.71 (City Datum)

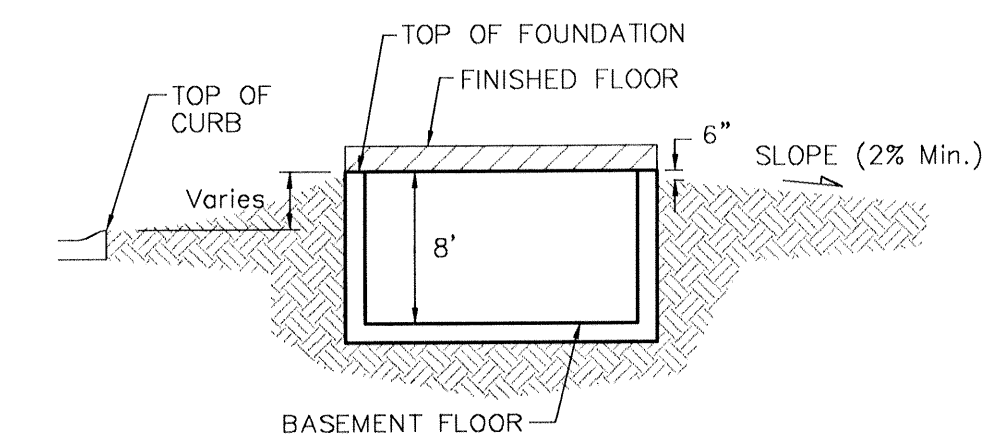
Scale: 1" = 60'

NOTES:
Proposed Top of Foundation Elevations Are Shown On Plans. Contractor to Set Finished Floor Elevations.

All Street Elevations Shown on Plans Are for Top of Curb (Full-Height).

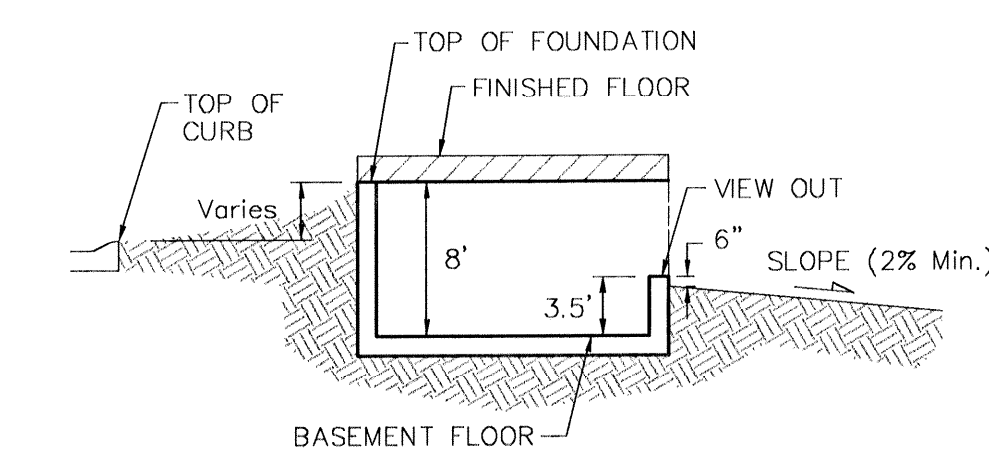
This Grading Plan is Designed with Walk-out & View-out Basements. Elevations Shown as (XXX V.O. or XXX W.O.)

Lot dimensions have been omitted on this plan, refer to the recorded plat for this information.



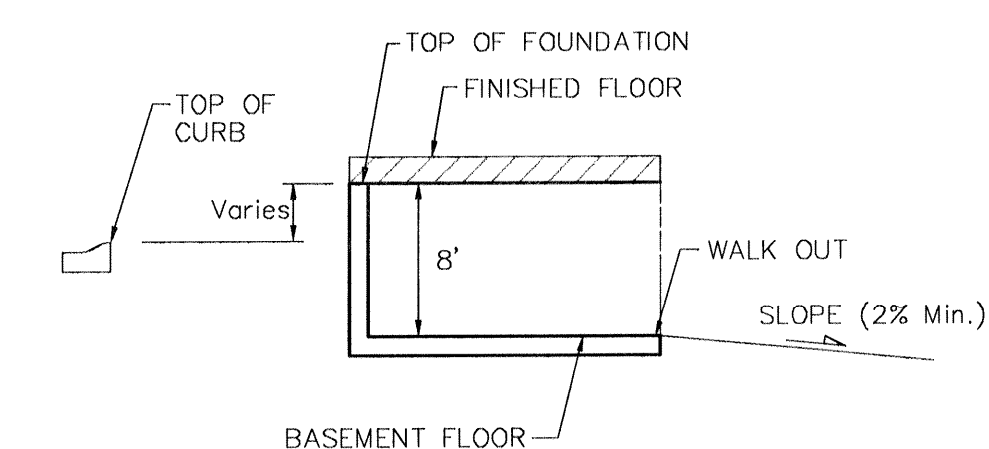
TYPICAL NON-VIEW OUT DETAIL

NO SCALE



TYPICAL VIEW OUT DETAIL

NO SCALE

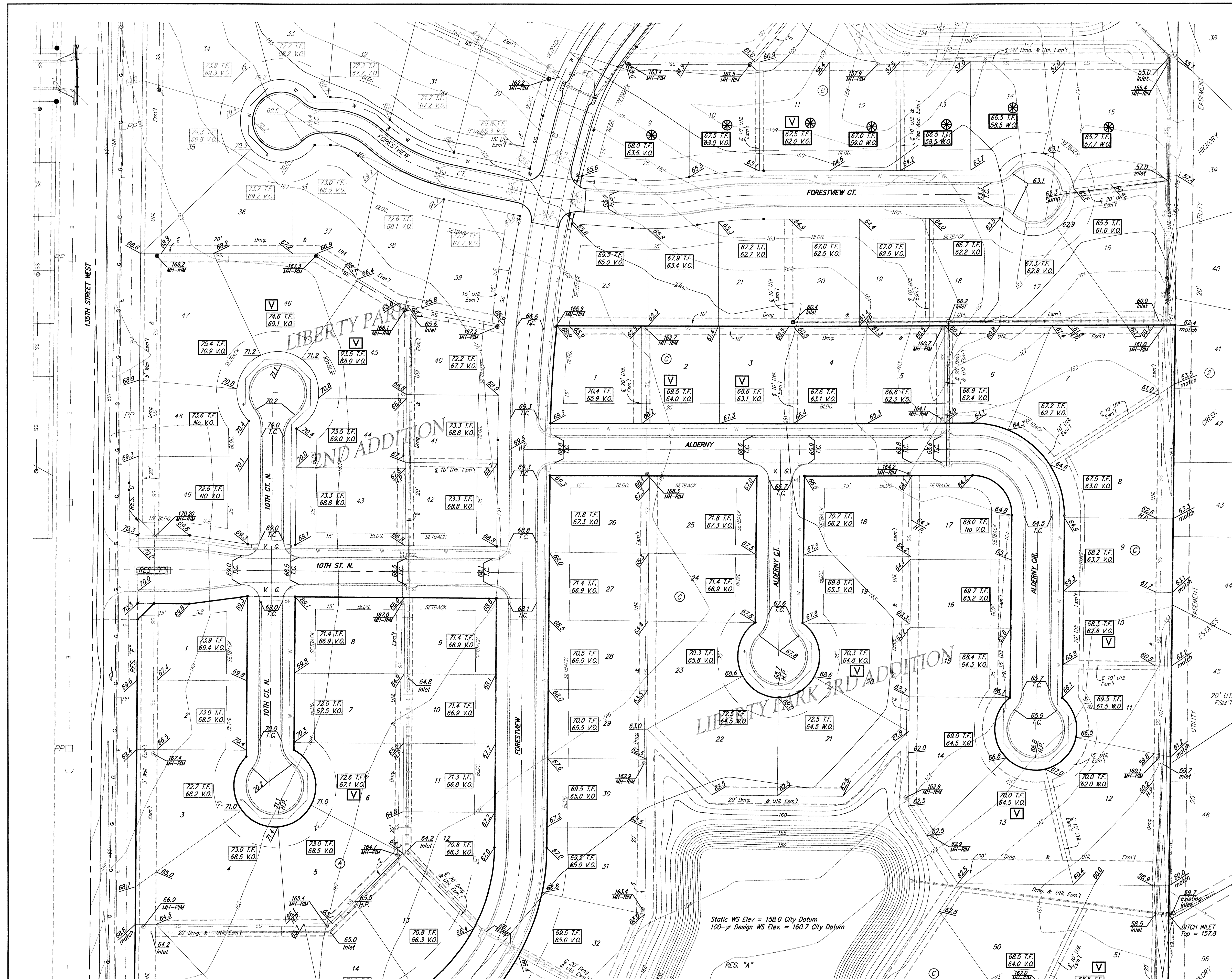


TYPICAL WALK OUT DETAIL

NO SCALE

Lots shown with "⊗" symbol indicates that extra deep foundations may be required.

ⓧ Indicates Non-Typical View-Out (Use 5.5' From T.F. to V.O.)



Static WS Elev = 158.0 City Datum
100-yr Design WS Elev. = 160.7 City Datum

Baughman		Liberty Park 3rd Addition Grading Plan	
Baughman Company, P.A. 315 8th St. Wichita, KS 67211 P 316-262-1271 F 316-262-0149 ENGINEERING SURVEYING PLANNING LANDSCAPE ARCHITECTURE			
PROJECT NUMBER		DESIGN	DRAWN
		BLG	JAK
REVISIONS:		APPROVED	DATE
7/31/06	JAK		11/04/05
Phase 1 Street Closures		SCALE	
		1" = 60'	
		SHEET	
		2 OF 2	

