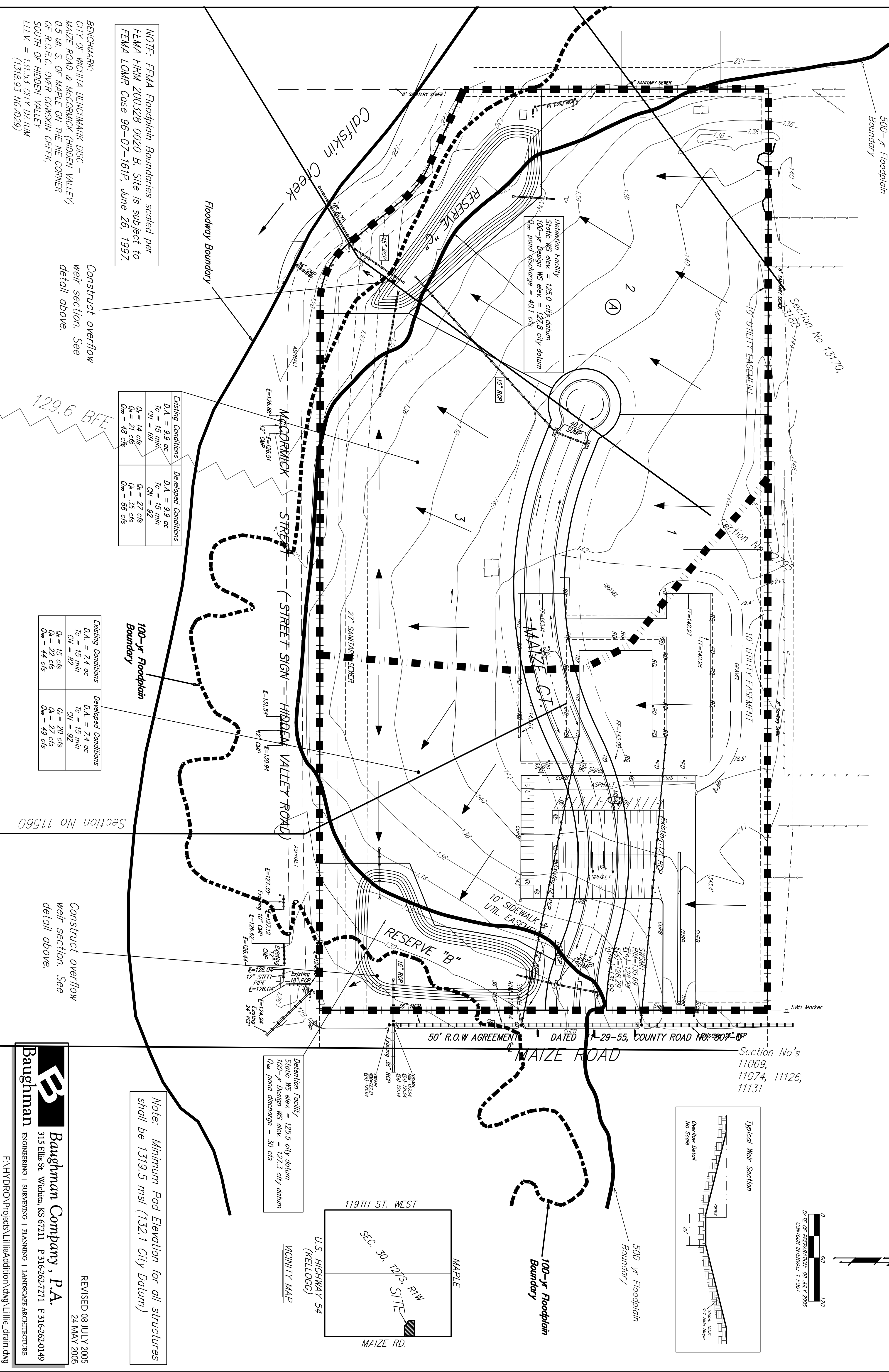


DRAINAGE PLAN LITTLE ADDITION WICHITA, SEDGWICK COUNTY, KANSAS



NOTE: FEMA Floodplain Boundaries scaled per FEMA FIRM 200328 0020 B. Site is subject to FEMA LOMR Case 96-07-161P, June 26, 1997.

BENCHMARK:
CITY OF WICHITA BENCHMARK DISC -
MAIZE ROAD & MCCORMICK (HIDDEN VALLEY)
0.5 MI. S. OF MAPLE ON THE NE CORNER
OF R.C.B.C. OVER COMSKIN CREEK,
SOUTH OF HIDDEN VALLEY
ELEV. = 131.53 CITY DATUM
(1318.93 NGVD29)

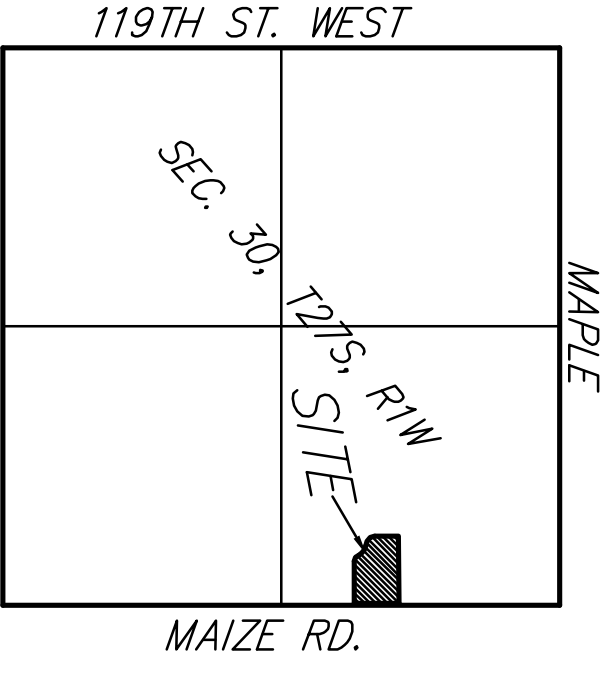
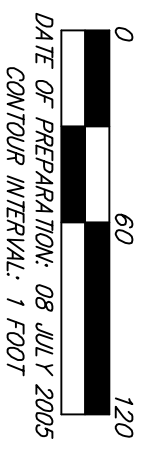
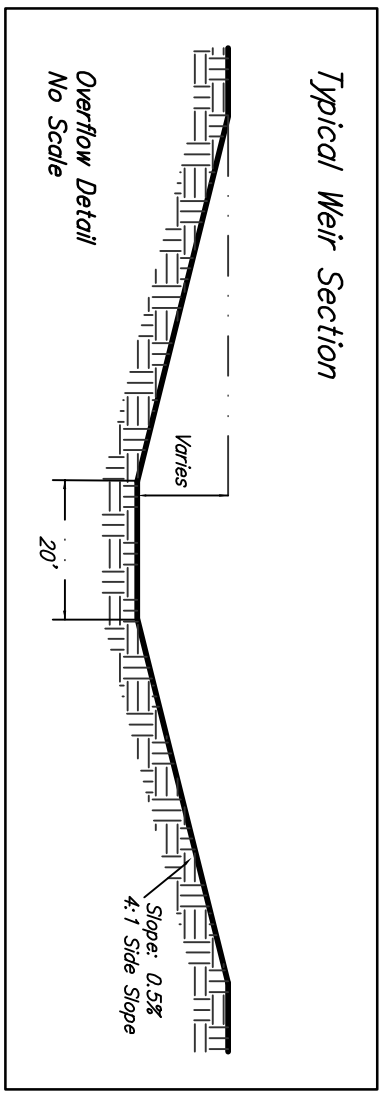
Existing Conditions		Developed Conditions	
D.A. = 9.9 ac	Tc = 15 min	D.A. = 9.9 ac	Tc = 15 min
CN = 69	Q ₁ = 14 cfs	CN = 92	Q ₁ = 27 cfs
Q ₂ = 21 cfs	Q ₃ = 49 cfs	Q ₂ = 33 cfs	Q ₃ = 66 cfs

Existing Conditions		Developed Conditions	
D.A. = 7.4 ac	Tc = 15 min	D.A. = 7.4 ac	Tc = 15 min
CN = 82	Q ₁ = 15 cfs	CN = 92	Q ₁ = 27 cfs
Q ₂ = 22 cfs	Q ₃ = 44 cfs	Q ₂ = 27 cfs	Q ₃ = 49 cfs

Detention Facility
Static MS elev. = 125.0 city datum
100-yr Design MS elev. = 123.3 city datum
Q_{in} pond discharge = 40.1 cfs

Detention Facility
Static MS elev. = 125.5 city datum
100-yr Design MS elev. = 127.3 city datum
Q_{in} pond discharge = 30 cfs

Note: Minimum Pad Elevation for all structures shall be 1319.5 msl (132.1 City Datum)



REVISED 08 JULY 2005
24 MAY 2005

B **Baughman Company, P.A.**
315 Ellis St. Wichita, KS 67211 P 316-262-7271 F 316-262-0149
ENGINEERING | SURVEYING | PLANNING | LANDSCAPE ARCHITECTURE

F:\HYDRO\Projects\LittleAddition.dwg \Little.drain.dwg