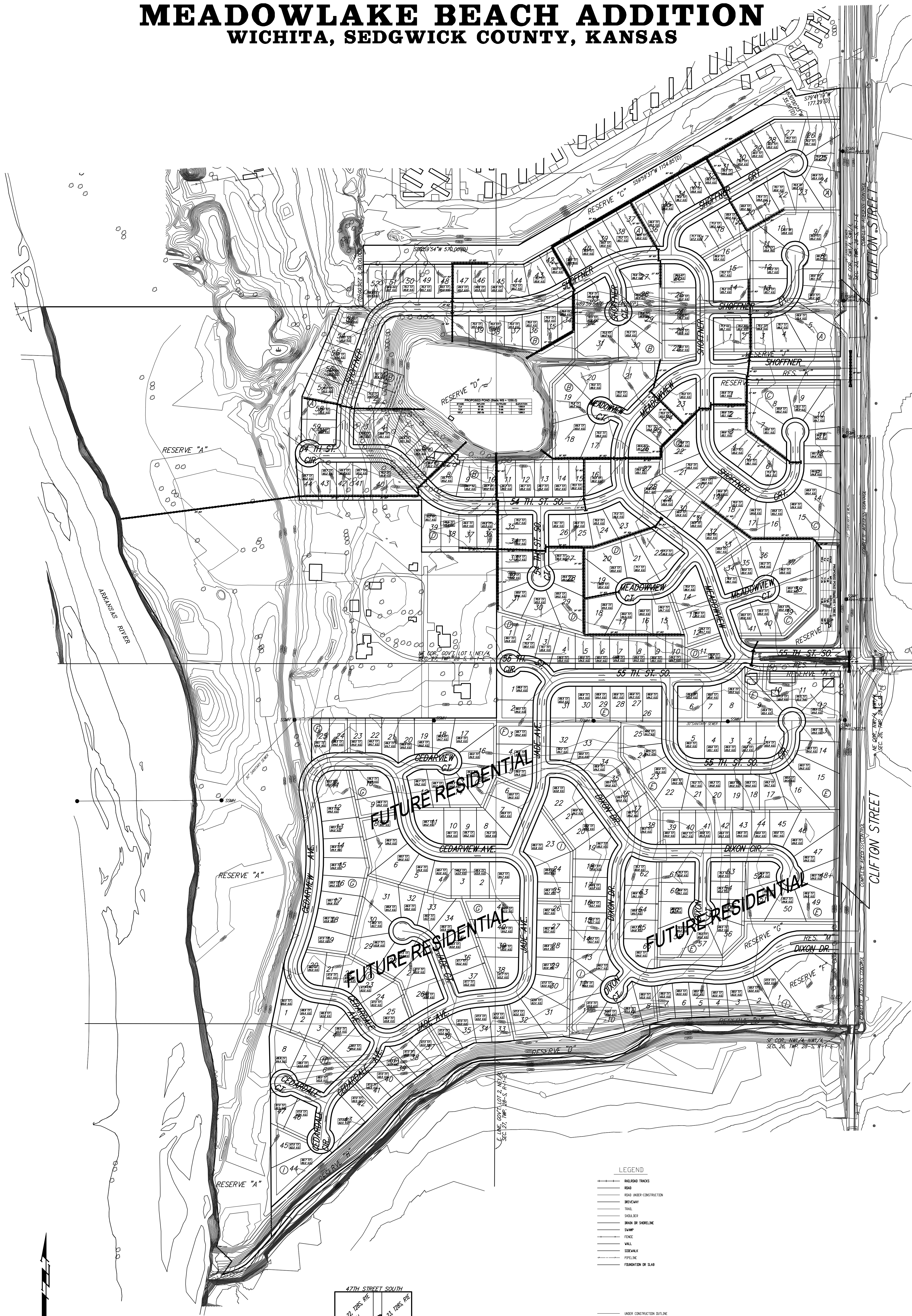
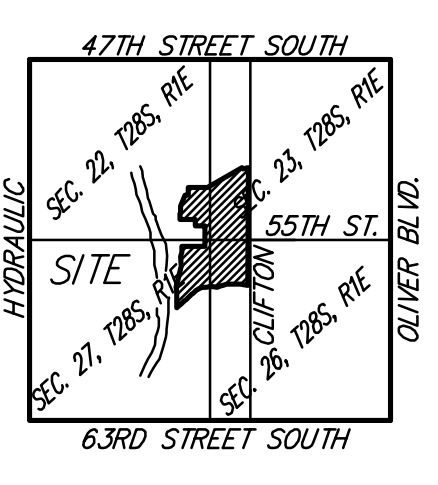


OVERALL EXHIBIT
MEADOWLAKE BEACH ADDITION
 WICHITA, SEDGWICK COUNTY, KANSAS



LEGEND

- RAILROAD TRACKS
- ROAD
- ROAD UNDER CONSTRUCTION
- SIDEWALK
- TRAIL
- SHOULDER
- BRAN OR SHERELINE
- SWAMP
- FENCE
- WALL
- SIDEWALK
- PIPELINE
- FOUNDATION OR SLAB
- UNDER CONSTRUCTION OUTLINE
- UNIDENTIFIED OBJECT
- VALVE
- END OF VALVE
- UTILITY POLE
- FLAG POLE
- RAILROAD CROSSING SIGN
- RAILROAD TYPERS
- SWAMP SYMBOL
- COMMERCIAL SIGN
- TREE
- Water Hole



VICINITY MAP

0 150 300
 DATE OF PREPARATION: 26 OCTOBER 2006
 DATE OF TOPOGRAPHY: 30 NOVEMBER 2004
 CONTOUR INTERVALS = 1 FOOT

11 DECEMBER 2006

B **Baughman Company, P.A.**
 315 Ellis St. Wichita, KS 67211 P 316-262-7271 F 316-262-0149
 Baughman ENGINEERING | SURVEYING | PLANNING | LANDSCAPE ARCHITECTURE

F:\PLAT\CLIFTON HEIGHTS 2ND ADDITION\DWG\CLIFTON HEIGHTS 2ND.P

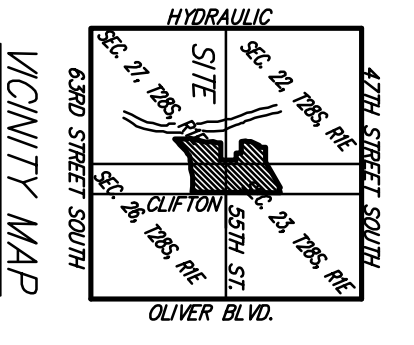
DRAINAGE PLAN MEADOW LAKE BEACH ADDITION WICHITA, SEDGWICK COUNTY, KANSAS



PROPOSED POND (SHEEP POND) (SHEEP POND)

STAGE	INFLOW	OUTFLOW	ELEVATION
2' W	46.26	0.26	126.83
3' W	202.54	0.26	126.83
4' W	262.54	0.26	126.83

DATE OF PREPARATION: 26 OCTOBER 2004
DATE OF REVISION: 20 NOVEMBER 2004
DRAWING NUMBER: 17801



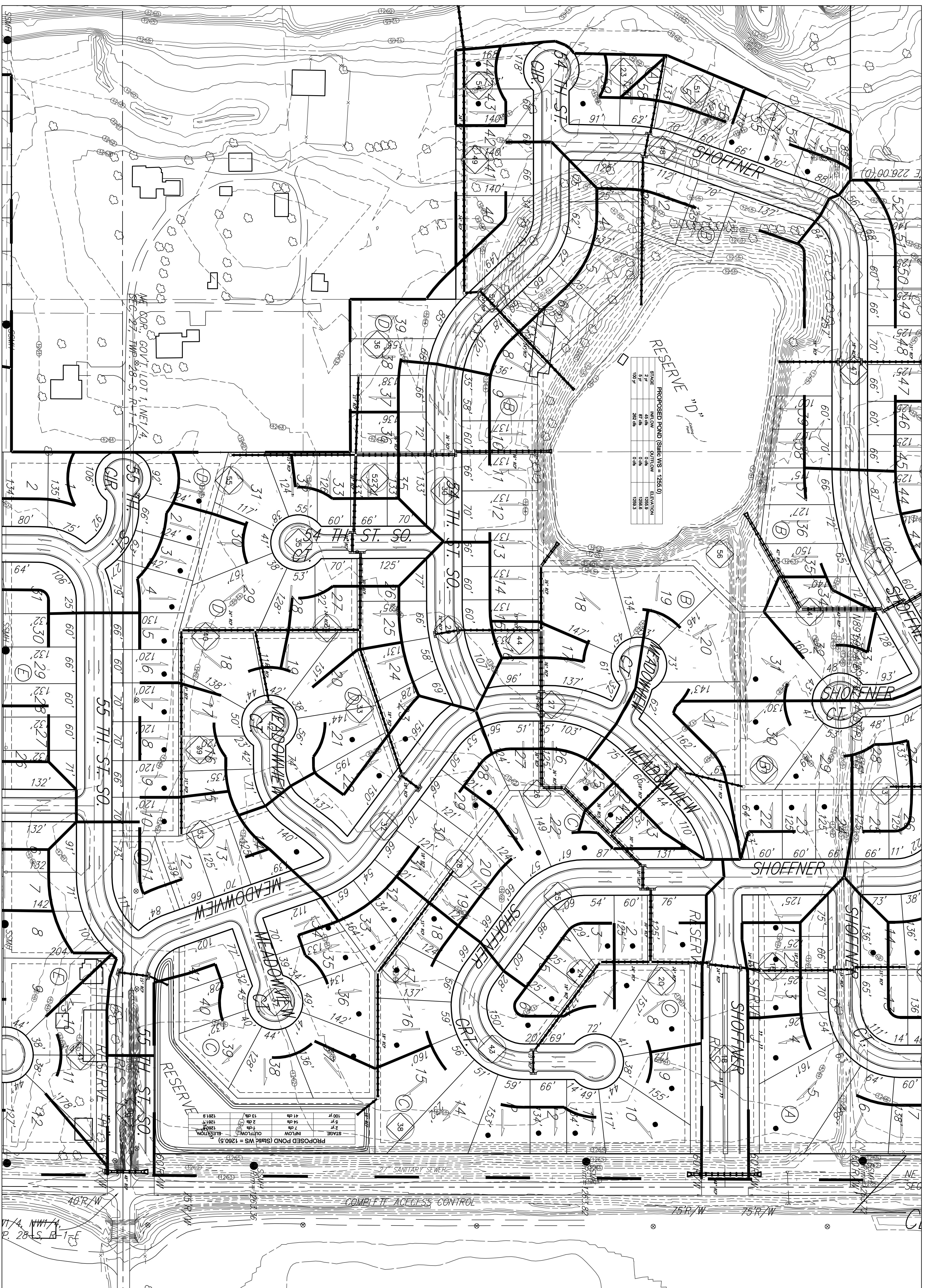
BENCHMARK: WICHITA BENCHMARK DISC, SE CORNER OF CLIFTON AND 55TH ST., SOUTHWEST CORNER OF RES. ON TOP OF HILLOARD AT THE WEST END. ELEV. = 1263.29 (NOV02)

Existing Rational C	2Yr		100Yr		2Yr		100Yr	
	Intensity	Rational C	Intensity	Rational C	Intensity	Rational C	Intensity	Rational C
0.4	4.56	0.51	7.37	0.48	4.56	0.54	7.37	0.54

Basin ID	Area	Existing Flowrates		Developed Flowrates	
		2Yr	100Yr	2Yr	100Yr
1	0.8	1.8	5.0	2.2	5.7
2	0.9	1.4	1.8	1.7	2.2
3	1.0	1.5	2.1	4.2	1.8
4	0.6	0.9	1.2	2.5	1.1
5	2.0	3.1	4.1	8.4	3.7
6	2.4	3.2	4.9	10.1	4.4
7	0.8	1.2	1.6	1.5	2.0
8	0.5	0.8	1.0	2.1	0.8
9	0.8	1.2	1.6	3.4	1.5
10	0.7	1.1	1.1	3.3	2
11	2.0	3.1	4.1	8.4	3.7
12	0.5	0.8	0.8	1.2	0.9
13	0.4	0.6	0.6	1.7	0.7
14	0.4	0.6	0.6	1.7	0.7
15	3.8	5.8	7.8	16.0	7.0
16	0.4	0.6	0.8	1.7	0.7
17	1.1	1.7	2.3	6.7	2.9
18	1.8	2.5	3.3	8.7	2.9
19	0.8	1.2	1.6	1.3	1.4
20	0.3	0.5	0.6	1.3	0.6
21	2.1	2.0	2.7	5.4	2.4
22	0.1	0.2	0.2	0.4	0.2
23	0.5	0.8	1.0	2.1	0.9
24	0.5	0.8	1.0	2.1	0.9
25	0.9	1.3	1.7	2.9	1.3
26	0.9	1.3	1.7	2.9	1.3
27	1.1	1.7	2.3	4.6	2.0
28	0.7	1.1	1.4	2.9	1.3
29	1.0	1.5	2.1	4.2	1.8
30	1.1	1.7	2.3	4.6	2.0
31	1.3	2.0	2.7	6.5	3.2
32	1.2	1.8	2.5	6.2	3.0
33	0.7	1.1	1.4	2.9	1.3
34	0.6	0.9	1.2	2.5	1.1
35	1.2	1.8	2.5	5.0	2.2
36	0.5	0.8	1.0	2.1	0.9
37	2.1	4.7	6.4	13.0	5.7
38	3.1	8.7	12.1	25.9	7.8
39	0.7	1.1	1.4	2.9	1.3
40	1.5	2.3	3.1	6.3	2.8
41	0.6	0.9	1.2	2.5	1.1
42	0.9	1.4	1.8	3.8	1.7
43	1.8	2.8	3.7	7.8	3.3
44	0.6	0.9	1.2	2.5	1.1
45	0.6	0.9	1.2	2.5	1.1
46	0.7	1.1	1.4	2.9	1.3
47	1.8	2.8	3.7	7.6	3.3
48	0.4	0.6	0.8	1.7	0.7
49	0.4	0.6	0.8	1.7	0.7
50	0.3	0.5	0.6	1.3	0.6
51	0.3	0.5	0.6	1.3	0.6
52	0.5	0.8	1.0	2.1	0.9
53	0.6	0.9	1.2	2.5	1.1
54	0.3	0.5	0.6	1.3	0.6
55	0.4	0.6	0.8	1.7	0.7
56	0.4	0.6	0.8	1.7	0.7
57	0.4	0.6	0.8	1.7	0.7
58	0.4	0.6	0.8	1.7	0.7
59	0.4	0.6	0.8	1.7	0.7
60	0.4	0.6	0.8	1.7	0.7
TOTAL	68.8	123	232	110	147

NOTE: All lots lie within the FEMA 100-Yr Floodplain Boundary. Base Flood Elevations are as shown. Boundary and BEF are per Preliminary Sedgwick County FEMA Flood Zones 500 & 510 of 2001.

DRAINAGE PLAN MEADOWLAKE BEACH ADDITION WICHITA, SEDGWICK COUNTY, KANSAS

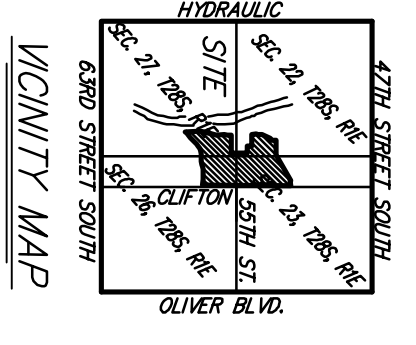
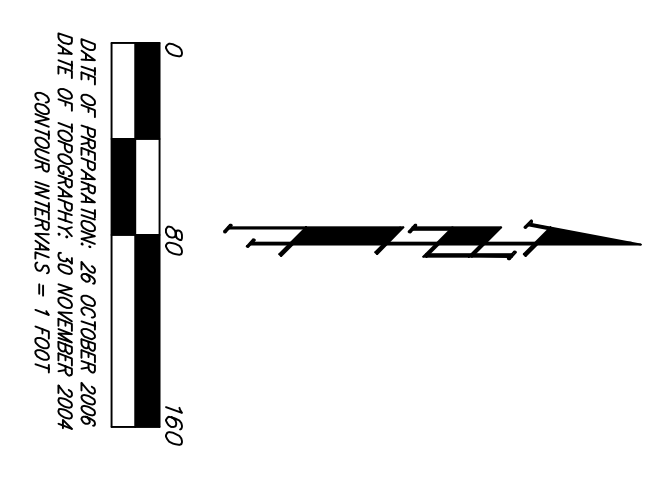


PROPOSED POND (SHEIK WS = 1265.0)

STAGE	INFLOW	OUTFLOW	ELEVATION
5 YR	1500	1300	1265.0
10 YR	2000	1800	1265.3

PROPOSED POND (SHEIK WS = 1260.5)

STAGE	INFLOW	OUTFLOW	ELEVATION
5 YR	1200	1000	1260.5
10 YR	1600	1400	1261.0

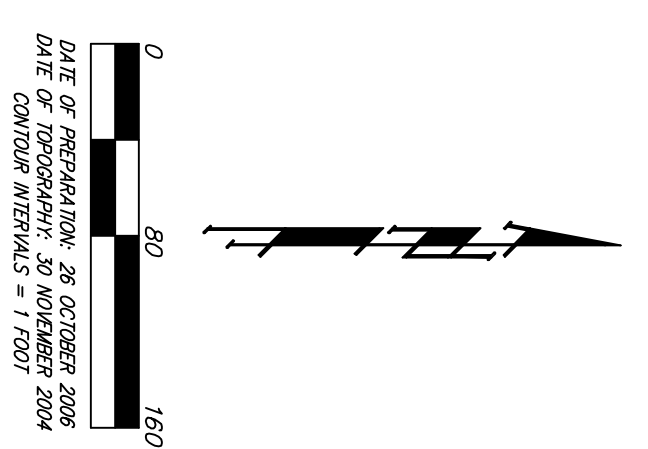
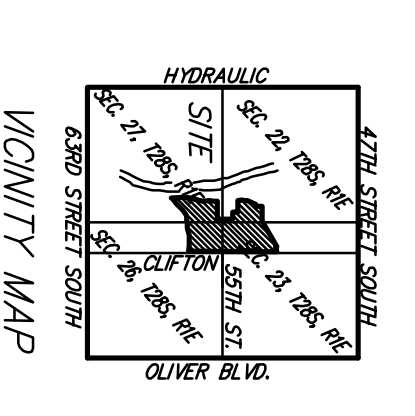
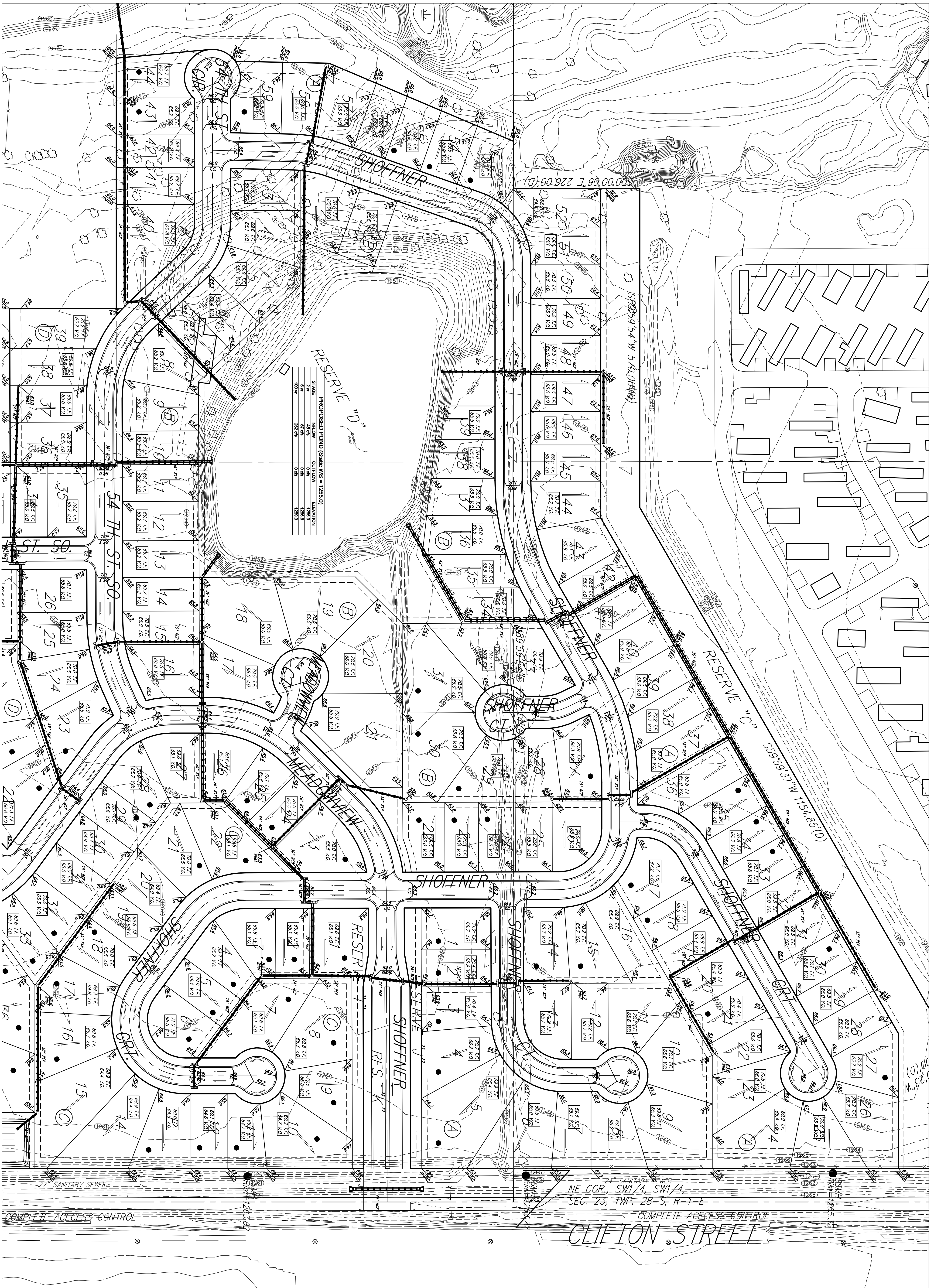


BENCHMARK:
CITY OF WICHITA BENCHMARK DISC, SE CORNER OF
OUTFLOW AND 55th ST, SOUTHWEST CORNER OF
ELEV = 1263.29 (NOV2022)

Basin ID	Area acres	Existing Elevations		Developed Elevations	
		2yr dfs	100yr dfs	2yr dfs	100yr dfs
1	1.2	1.8	1.8	2.2	3.0
2	0.9	1.4	1.6	1.7	2.2
3	1.0	1.5	2.1	1.8	2.5
4	0.8	1.2	2.5	1.1	1.5
5	2.0	3.1	4.1	3.7	5.0
6	1.6	2.8	3.2	2.6	3.3
7	1.6	2.8	3.2	2.6	3.3
8	0.5	0.8	1.0	0.9	1.2
9	0.8	1.2	1.6	1.5	2.0
10	0.7	1.1	1.3	1.3	2.2
11	2.9	3.1	4.1	3.4	4.9
12	0.5	0.6	0.8	0.9	1.0
13	0.4	0.6	0.8	0.7	1.0
14	0.4	0.6	0.8	0.7	1.0
15	0.4	0.6	0.8	0.7	1.0
16	0.4	0.6	0.8	0.7	1.0
17	1.1	1.7	2.3	1.7	2.4
18	1.6	2.5	3.3	2.8	3.9
19	1.8	2.7	3.5	2.9	4.1
20	0.8	1.2	1.6	1.3	1.8
21	0.3	0.5	0.6	0.5	0.7
22	1.3	2.0	2.7	1.5	2.2
23	0.1	0.2	0.2	0.2	0.2
24	0.5	0.8	1.0	0.9	1.2
25	1.5	2.3	3.1	2.5	3.5
26	0.7	1.1	1.4	1.2	1.7
27	1.1	1.7	2.3	1.7	2.4
28	0.7	1.1	1.4	1.2	1.7
29	1.0	1.5	2.1	1.4	2.0
30	1.1	1.7	2.3	1.6	2.3
31	1.3	2.0	2.7	1.5	2.2
32	0.9	1.3	1.8	1.3	1.8
33	0.9	1.3	1.8	1.3	1.8
34	0.6	0.9	1.2	0.9	1.2
35	1.2	1.8	2.5	1.8	2.5
36	0.5	0.8	1.0	0.9	1.2
37	3.1	4.7	6.4	5.7	7.6
38	4.0	6.1	8.2	6.8	9.8
39	1.5	2.3	3.1	2.5	3.5
40	1.5	2.3	3.1	2.5	3.5
41	0.6	0.9	1.2	0.9	1.2
42	0.9	1.4	1.9	1.3	1.9
43	1.8	2.8	3.7	2.6	3.6
44	0.2	0.3	0.4	0.3	0.4
45	0.5	0.8	1.2	0.8	1.1
46	0.5	0.8	1.2	0.8	1.1
47	1.6	2.3	3.1	2.3	3.1
48	2.4	3.7	4.9	4.4	5.9
49	0.4	0.6	0.8	0.7	1.0
50	1.7	2.6	3.5	3.1	4.2
51	0.3	0.5	0.6	0.5	0.7
52	0.5	0.8	1.1	0.9	1.2
53	0.5	0.8	1.1	0.9	1.2
54	0.3	0.5	0.6	0.5	0.7
55	9.4	14.4	19.3	17.3	23.1
56	0.4	0.6	0.8	0.7	1.0
57	0.4	0.6	0.8	0.7	1.0
58	0.4	0.6	0.8	0.7	1.0
TOTAL	69.3	92	123	282	447

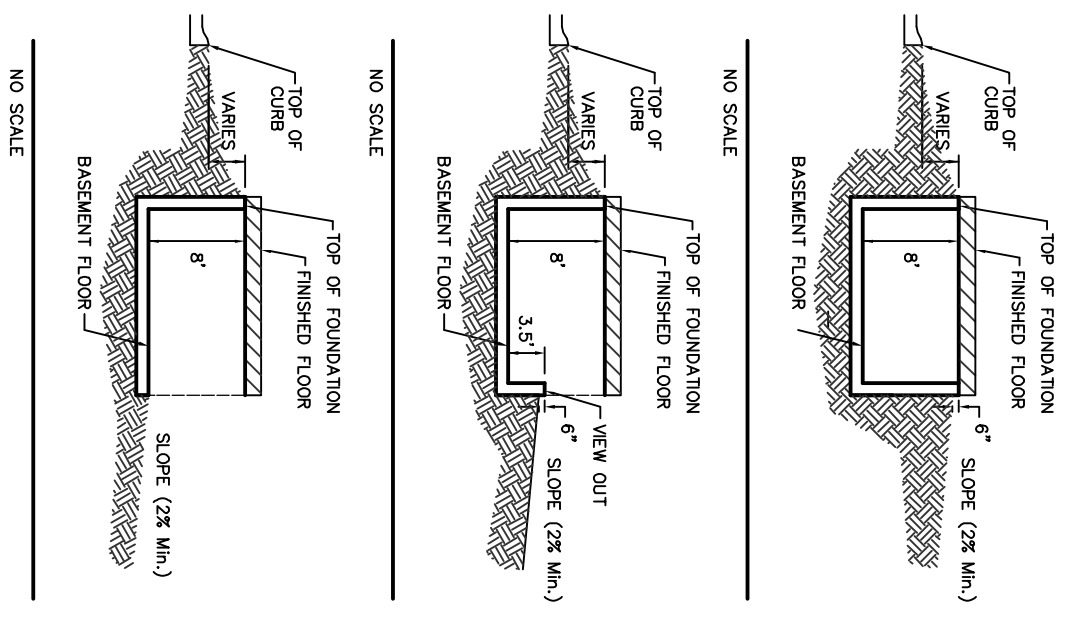
NOTE: All lots lie within the FEMA 100-yr Floodplain Boundary. Base Flood Elevations are as shown. Boundary and BFE are per Preliminary Sedgwick County FEMA Flood Panels 508 & 510 of 700.

GRADING PLAN MEADOW LAKE BEACH ADDITION WICHITA, SEDGWICK COUNTY, KANSAS



BENCHMARK:
CITY OF WICHITA BENCHMARK DISC, SE CORNER OF
CLIFTON AND 50TH ST., SOUTHWEST CORNER OF
LOT 10, BLOCK 10, MEADOW LAKE BEACH ADDITION
ELEV. = 1263.29 11/02/29

NE COR., SW1/4, SW1/4,
SEC. 23, TWP. 28 S., R. 1 E.
COMPLETE ACCESS CONTROL
CLIFTON STREET

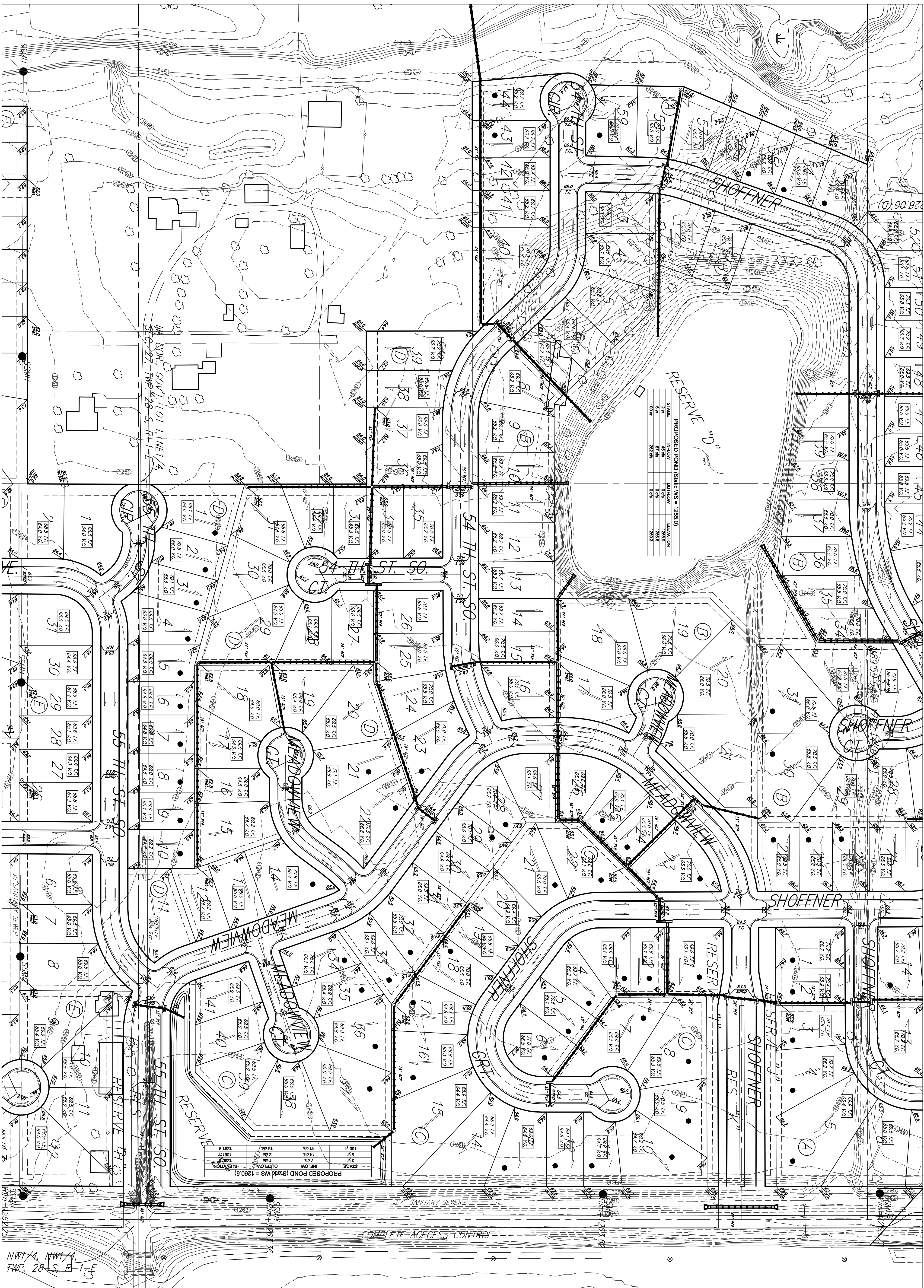


- NOTES:**
1. PROPOSED TOP OF FOUNDATION ELEVATIONS ARE SHOWN ON THIS PLAN. CONTRACTOR TO SET FINISHED FLOOR SHOWN ON PLANS ARE FOR TOP OF CURB (TILE-UP) AND WALK-OUTS. ELEVATIONS SHOWN AS XXX.XXX ARE KEY W.O. DEPOT WALK-OUT STRUCTURES.
 2. THIS GRADING PLAN IS DESIGNED WITH NEW-OUTS AND WALK-OUTS. ELEVATIONS SHOWN AS XXX.XXX ARE KEY W.O. DEPOT WALK-OUT STRUCTURES.
 3. ALL LOTS SHALL MEET MINIMUM PAD REQUIREMENT AS SHOWN ON THE RECORDED PLAN.
 4. LOT DIMENSIONS HAVE BEEN OBTAINED ON THIS PLAN EXEMPT & BUILDING SETBACK INFORMATION.
 5. HOUSE PAD ELEVATIONS DEPICTED WITH BOLD OUTLINES AND NOTED WITH THIS SYMBOL. FOUNDATIONS MAY BE REQUIRED.
 6. A DRAINAGE PLAN HAS BEEN DEVELOPED FOR THIS SUBDIVISION AND IS ON FILE WITH THE CITY OF WICHITA OR AS INDICATED WITH THE APPROVAL OF THE CITY ENGINEER OF THE CITY OF WICHITA, KANSAS. NO OBSTRUCTIONS WHICH WOULD INTERFERE WITH THE FLOW OF THIS DRAINAGE PLAN SHALL BE ALLOWED.
 7. ALL ELEVATIONS SHOWN ARE CITY OF WICHITA DATUM.
 8. NO BUILDING PERMITS ARE TO BE ISSUED FOR ANY LOTS THAT ARE LOCATED IN THE SPECIAL FLOOD HAZARD ZONE UNLESS THE FOLLOWING CONDITIONS ARE MET:
 9. THE LOWEST FLOOR (INCLUDING BASEMENT) IS CONSTRUCTED A MINIMUM OF 1 FOOT ABOVE THE DETERMINED BASE FLOOD ELEVATION.

NOTE: All lots lie within the FEMA 100-year Floodplain boundary. Base Flood Elevation (BFE) is shown on the Flood Hazard Map. Flood Hazard Map is available at the Sedgwick County EMA from Forms 508 & 510 at 702-261-7000.

Baughman Company, P.A.
35 SOUTH BEND
1150 S. WILSON ST., SUITE 100
WICHITA, KANSAS 67202
TEL: 781-321-1100
WWW.BAUGHMANPA.COM

GRADING PLAN MEADOW LAKE BEACH ADDITION WICHITA, SEDGWICK COUNTY, KANSAS

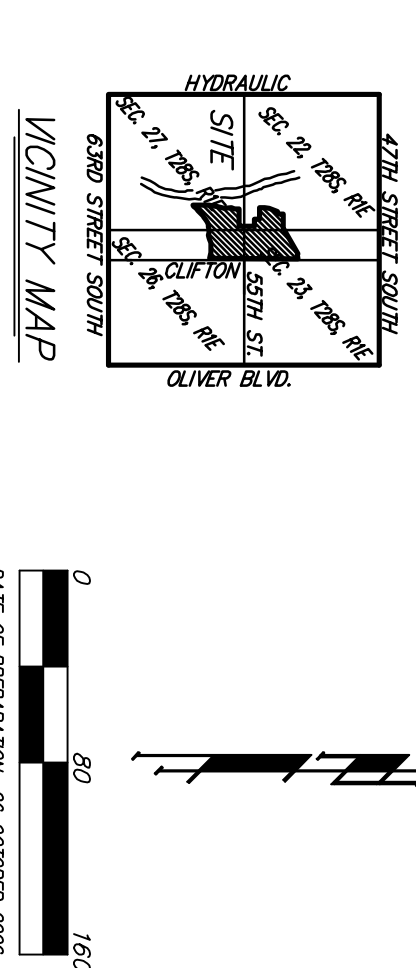


PROPOSED POND (Siltic WS = 1285.0)

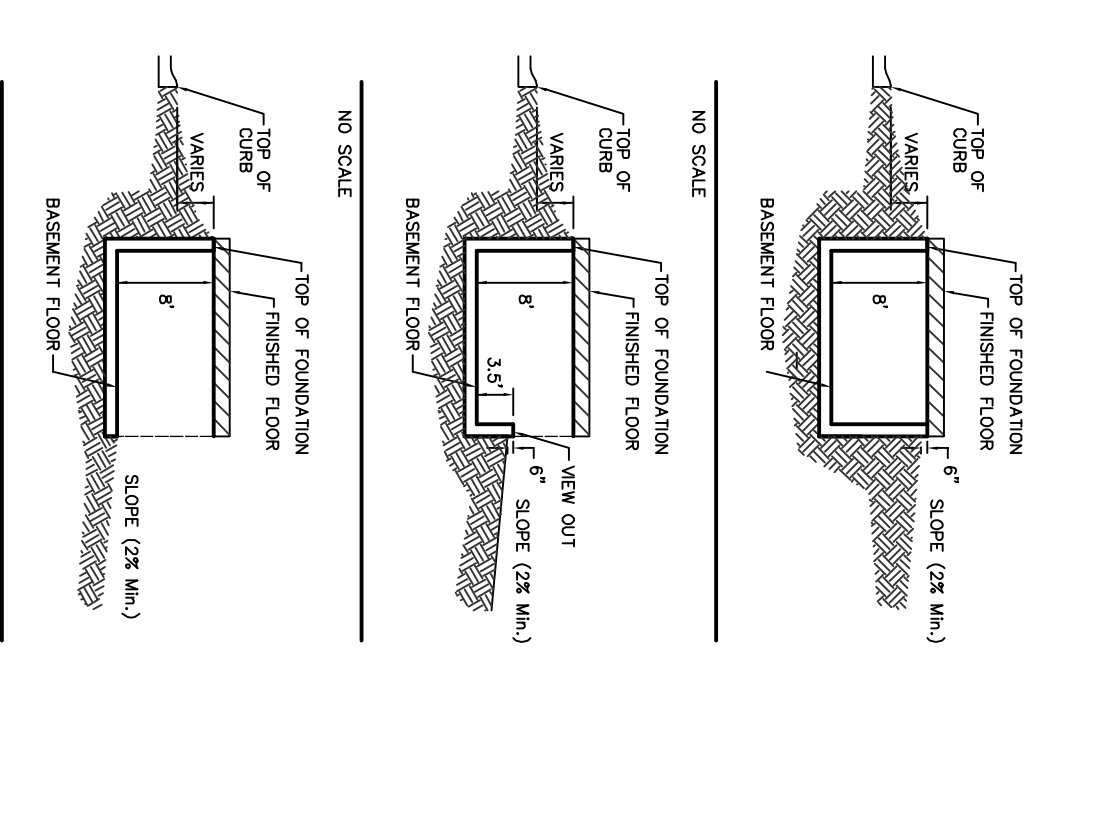
STAGE	INFLOW	OUTFLOW	ELEVATION
5'	6.0	1.0	1286.0
6'	12.0	2.0	1287.0
7'	18.0	3.0	1288.0
8'	24.0	4.0	1289.0
9'	30.0	5.0	1290.0

PROPOSED POND (Siltic WS = 1280.5)

STAGE	INFLOW	OUTFLOW	ELEVATION
5'	6.0	1.0	1281.5
6'	12.0	2.0	1282.5
7'	18.0	3.0	1283.5
8'	24.0	4.0	1284.5
9'	30.0	5.0	1285.5



BENCHMARK: CITY OF WICHITA BENCHMARK DISC, SE CORNER OF 47TH AND 50TH STS, SOUTHWEST CORNER OF ELEV. = 1283.29 NAD83
DATE OF PROVISION: 20 OCTOBER 2004
DATE OF TYPING: 20 NOVEMBER 2004
CONTOUR INTERVALS = 1 FOOT



- NOTES:
1. PROPOSED TOP OF FOUNDATION ELEVATIONS ARE SHOWN ON PLANS. CONTRACTOR TO SET FINISHED FLOOR AND GARAGE FLOOR ELEVATIONS. ALL STREET ELEVATIONS SHOWN ON PLANS ARE FOR TOP OF CURB (FULL-HEIGHT).
 2. THIS GRADING PLAN IS DESIGNED WITH NEW-OUTS AND NEW-OUTS ELEVATIONS SHOWN AS KXX V.O. DEPICT NEW-OUT STRUCTURES ELEVATIONS SHOWN AS DXX V.O. DEPICT WALK-OUT STRUCTURES.
 3. ALL LOTS SHALL MEET MINIMUM PAV. REQUIREMENT AS SHOWN ON THE RECORDED P.L.T.
 4. LOT DIMENSIONS HAVE BEEN OBTAINED ON THIS PLAN REFER TO THE RECORDED PLAT FOR FINAL DIMENSION, EASEMENT, & BUILDING SETBACK INFORMATION.
 5. HOUSE PAV. ELEVATIONS DEPICTED WITH BOLD OUTLINES AND NOTED WITH THIS SYMBOL. DEEP FOUNDATIONS MAY BE REQUIRED.
 6. A DRAINAGE PLAN HAS BEEN DEVELOPED FOR THIS SUBDIVISION AND IS ON FILE WITH THE CITY OF WICHITA, KANSAS. DRAINAGE INTENT SHALL REMAIN AS DEPICTED OR AS MODIFIED WITH THE APPROVAL OF THE CITY ENGINEER ON THE CITY OF WICHITA, KANSAS. NO DRAINAGE PLAN SHALL BE ALLOWED.
 7. ALL ELEVATIONS SHOWN ARE CITY OF WICHITA DATUM.
 8. NO BUILDING PERMITS ARE TO BE ISSUED FOR ANY LOTS THAT ARE LOCATED IN THE SPECIAL FLOOD HAZARD AREA WITHIN THIS PLATTED SUBDIVISION UNLESS ONE OF THE FOLLOWING CONDITIONS ARE MET:
 - A. THE LOWEST FLOOR (INCLUDING BASEMENT) IS CONSTRUCTED A MINIMUM OF 1 FOOT ABOVE THE DETERMINED BASE FLOOD ELEVATION.
 - OR
 - B. A LETTER OF MAP REVISION (LOR) IS ISSUED BY THE FEDERAL EMERGENCY MANAGEMENT AGENCY (FEMA) REWORKING THE SUBJECT PROPERTY FROM THE SPECIAL FLOOD HAZARD AREA WHICH WOULD THEN ALLOW LOWEST FLOORING AS SPECIFIED ON THIS GRADING PLAN AND MEETING FEMA TECHNICAL BULLETIN 10-01.
 9. ALL LOTS SHALL MEET THE CONDITIONS SPECIFIED IN FEMA TECHNICAL BULLETIN 10-01.

NOTE: All lots lie within the FEMA 100-Yr Flood Boundary. Base Flood Elevations are as shown. Boundary and Elevation per Preliminary Sedgwick County FEMA Flood Panels 508 & 510 of 702.

21 OCTOBER 2004

B Baughman Company, P.A.
3115 S.W. 34th St., Topeka, KS 66611
Tel: 785.233.7777 Fax: 785.233.7777
www.baughmancompany.com