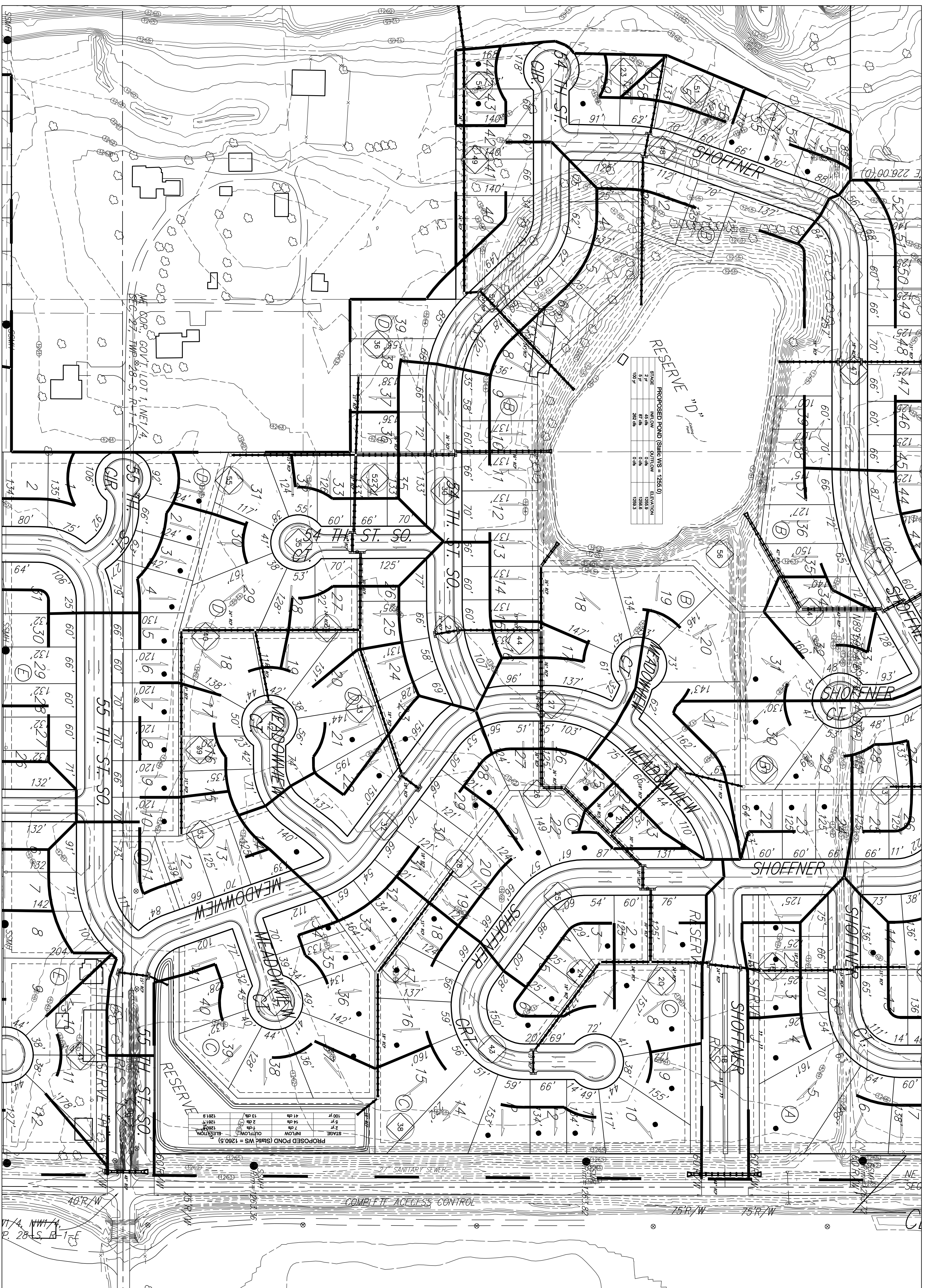


# DRAINAGE PLAN MEADOWLAKE BEACH ADDITION WICHITA, SEDGWICK COUNTY, KANSAS

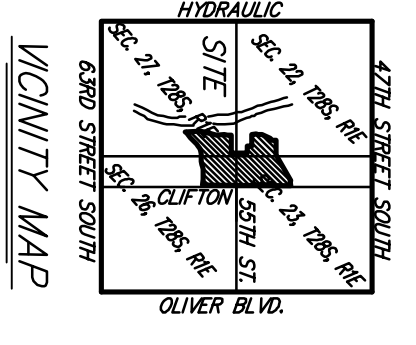
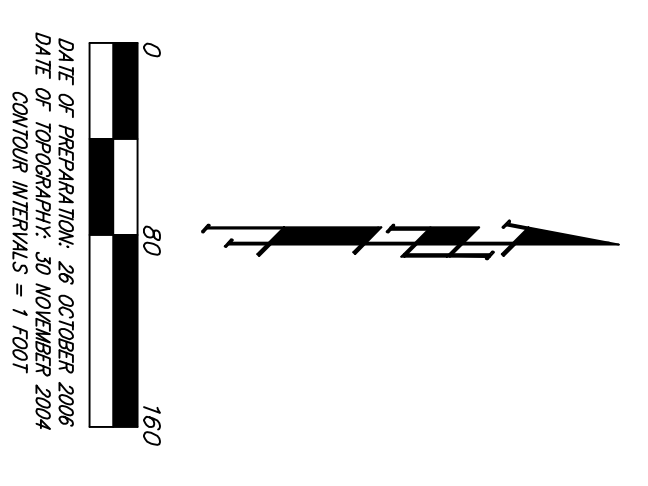


PROPOSED POND (Spill WS = 1265.0)

STAGE	INFLOW	OUTFLOW	ELEVATION
5 YR	1500	1300	1260.0
10 YR	2000	1800	1260.3

PROPOSED POND (Spill WS = 1260.5)

STAGE	INFLOW	OUTFLOW	ELEVATION
5 YR	1200	1000	1255.0
10 YR	1600	1400	1255.5



BENCHMARK:  
CITY OF WICHITA BENCHMARK DISC, SE CORNER OF  
OUTFLOW AND 55th ST, SOUTHWEST CORNER OF  
ELEV = 1263.29 (MVD22)

Basin ID	Area acres	Existing Elevations		Developed Elevations	
		2yr dfs	100yr dfs	2yr dfs	100yr dfs
1	1.2	2.5	5.0	2.2	3.0
2	0.9	1.4	1.8	1.7	2.2
3	1.0	1.5	2.1	1.8	2.5
4	0.8	1.2	1.2	1.1	1.5
5	2.0	3.1	4.1	3.7	5.0
6	1.6	2.8	3.2	2.6	3.3
7	1.6	2.8	3.2	2.6	3.3
8	0.5	0.8	1.0	0.9	1.2
9	0.8	1.2	1.6	1.5	2.0
10	0.7	1.1	1.1	1.3	1.2
11	2.9	3.1	4.1	3.4	4.9
12	0.5	0.6	0.8	0.9	1.0
13	0.4	0.6	0.8	0.7	1.0
14	0.4	0.6	0.8	0.7	1.0
15	0.4	0.6	0.8	0.7	1.0
16	0.4	0.6	0.8	0.7	1.0
17	1.1	1.7	2.3	1.7	2.4
18	1.6	2.5	3.3	2.8	3.9
19	1.8	2.7	3.5	2.9	3.9
20	0.8	1.2	1.6	1.3	1.8
21	0.3	0.5	0.6	0.5	0.7
22	1.3	2.0	2.7	1.5	2.2
23	0.1	0.2	0.2	0.4	0.2
24	0.5	0.8	1.0	0.9	1.2
25	1.5	2.5	3.3	2.9	3.9
26	0.7	1.1	1.4	1.2	1.7
27	1.1	1.7	2.3	1.7	2.4
28	0.7	1.1	1.4	1.2	1.7
29	1.0	1.5	2.1	1.8	2.5
30	1.1	1.7	2.3	1.8	2.5
31	1.3	2.0	2.7	1.5	2.2
32	0.9	1.3	1.9	1.3	1.9
33	0.9	1.3	1.9	1.3	1.9
34	0.6	0.9	1.2	0.9	1.2
35	1.2	1.8	2.5	2.2	3.0
36	0.5	0.8	1.0	0.9	1.2
37	3.1	4.7	6.4	5.7	7.6
38	4.0	6.1	8.2	6.8	9.8
39	1.5	2.3	3.1	2.8	3.7
40	1.5	2.3	3.1	2.8	3.7
41	0.6	0.9	1.2	0.9	1.2
42	0.9	1.4	1.9	1.3	1.9
43	1.8	2.8	3.7	3.4	4.4
44	0.2	0.3	0.4	0.4	0.5
45	0.5	0.8	1.2	0.9	1.2
46	0.5	0.8	1.2	0.9	1.2
47	1.6	2.5	3.3	2.8	3.9
48	2.4	3.7	4.9	4.4	5.9
49	0.4	0.6	0.8	0.7	1.0
50	1.7	2.6	3.5	3.1	4.2
51	0.3	0.5	0.6	0.6	0.7
52	0.5	0.8	1.2	0.9	1.2
53	0.5	0.8	1.2	0.9	1.2
54	0.3	0.5	0.6	0.6	0.7
55	9.4	14.4	19.3	17.3	23.1
56	0.4	0.6	0.8	0.7	1.0
57	0.4	0.6	0.8	0.7	1.0
58	0.4	0.6	0.8	0.7	1.0
TOTAL	69.3	92	123	282	110
				147	283

NOTE: All lots lie within the FEMA 100-Yr Floodplain Boundary. Base Flood Elevations are as shown. Boundary and BFE are per Preliminary Sedgwick County FEMA Flood Panels 508 & 510 of 700.