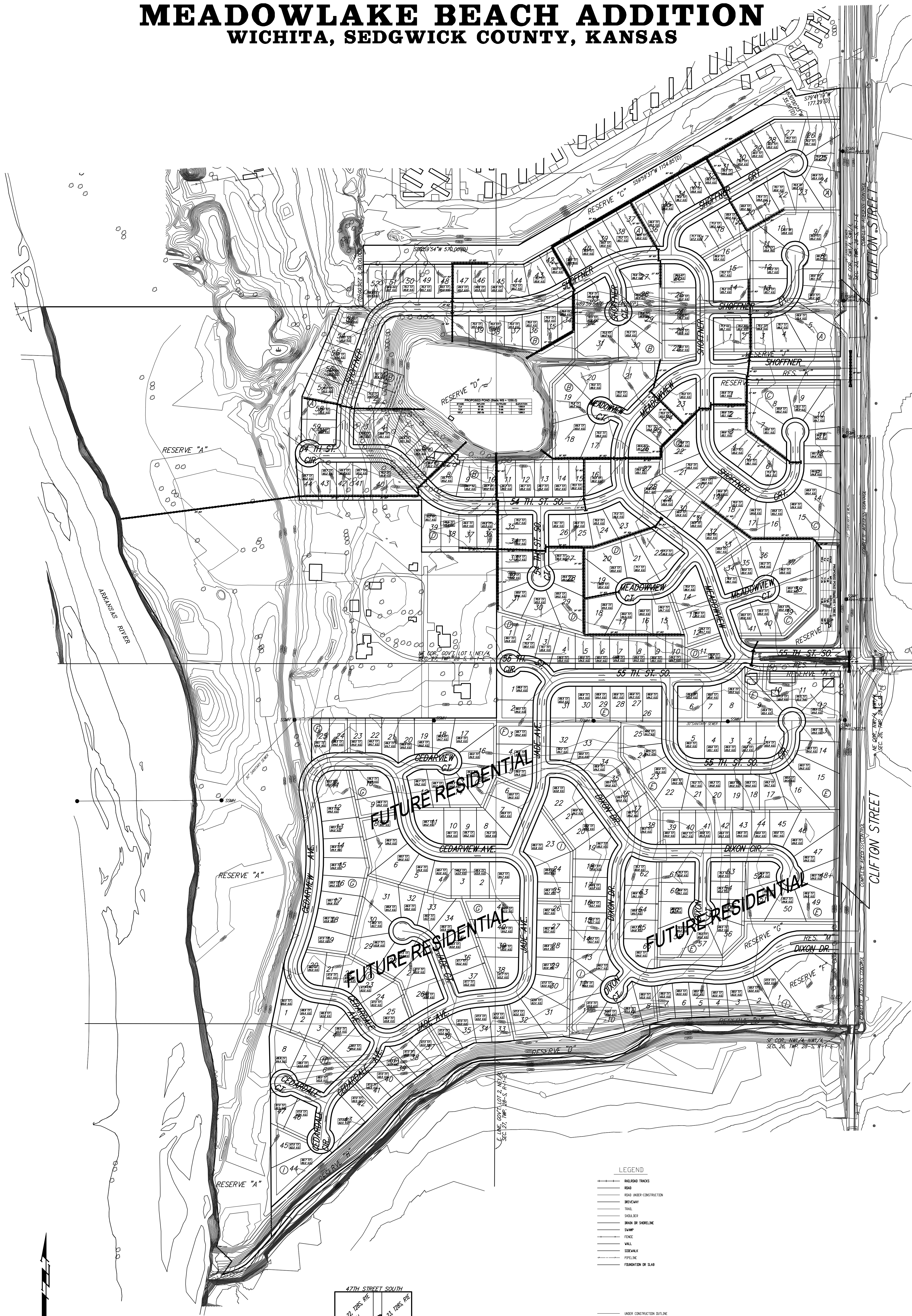
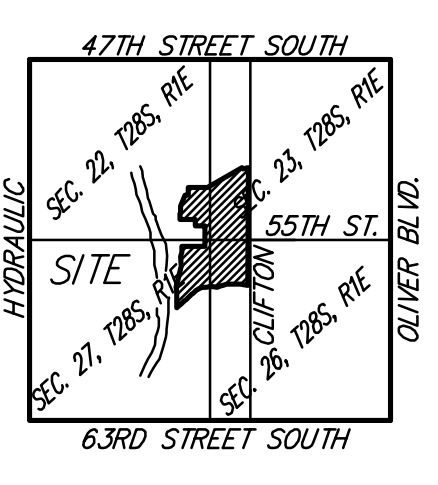


OVERALL EXHIBIT
MEADOWLAKE BEACH ADDITION
 WICHITA, SEDGWICK COUNTY, KANSAS



LEGEND

- RAILROAD TRACKS
- ROAD
- ROAD UNDER CONSTRUCTION
- SIDEWALK
- TRAIL
- SHOULDER
- BRAN DR SHERELINE
- SWAMP
- FENCE
- WALL
- SIDEWALK
- PIPELINE
- FOUNDATION OR SLAB
- UNDER CONSTRUCTION OUTLINE
- UNIDENTIFIED OBJECT
- VALVE
- END OF VALVE
- UTILITY POLE
- FLAG POLE
- RAILROAD CROSSING SIGN
- RAILROAD TYPERS
- SWAMP SYMBOL
- COMMERCIAL SIGN
- TREE
- Water Hole



VICINITY MAP

0 150 300
 DATE OF PREPARATION: 26 OCTOBER 2006
 DATE OF TOPOGRAPHY: 30 NOVEMBER 2004
 CONTOUR INTERVALS = 1 FOOT

11 DECEMBER 2006

B **Baughman Company, P.A.**
 315 Ellis St. Wichita, KS 67211 P 316-262-7271 F 316-262-0149
 Baughman ENGINEERING | SURVEYING | PLANNING | LANDSCAPE ARCHITECTURE

F:\PLAT\CLIFTON HEIGHTS 2ND ADDITION\DWG\CLIFTON HEIGHTS 2ND.P