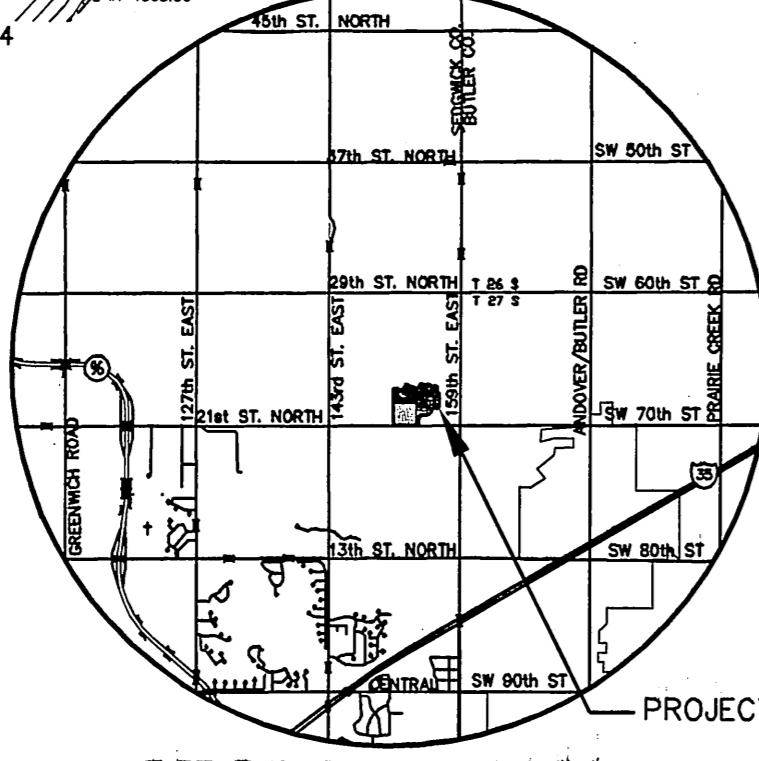


**MINIMUM PAD ELEVATIONS (LOWEST OPENINGS)**

LOTS	BLOCK	ELEVATION (CITY DATUM)	ELEVATION (NGVD)
1	1	184.8	1372.2
20	1	184.8	1372.2
21	1	184.8	1372.2
30	1	182.0	1369.4
31	1	182.0	1369.4
32	1	182.0	1369.4
33	1	182.0	1369.4
34	1	182.0	1369.4
39	1	182.0	1369.4
15	2	185.0	1372.4
16	2	185.0	1372.4
17	2	185.0	1372.4
18	2	185.0	1372.4
19	2	185.0	1372.4
20	2	185.0	1372.4

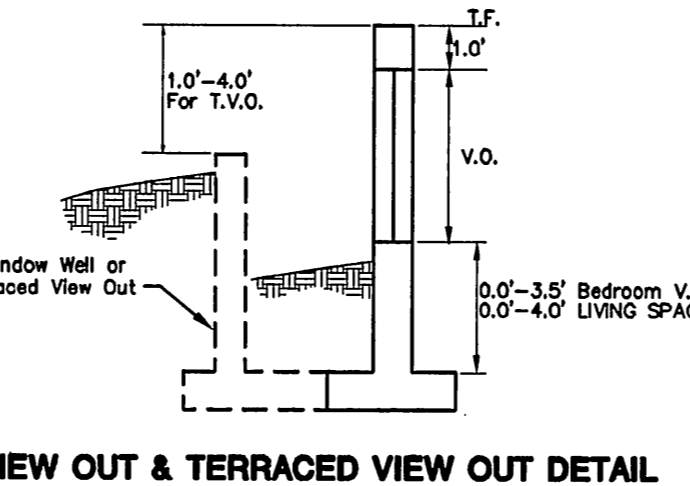


**BENCH MARKS**

- BM#1 Railroad spike in north side of power pole, 48' south of the South Quarter corner, Sec. 1, T27S, R2E. Elev. = 1364.78 NGVD 29
- BM#2 Railroad spike in north side of power pole, 924' east and 50' south of the South Quarter corner, Sec. 1, T27S, R2E. Elev. = 1372.64 NGVD 29
- BM#3 Top of fence T-post 6" below ground, 206' West and 21' South of the northeast corner of the Lot 39 or 473' north and 889' north of the South Quarter, Sec. 1, T27S, R2E. Elev. = 1371.15 NGVD 29
- BM#4 Top of fence T-post 6" below ground, 436' south and 85' east of the northwest corner of the Lot 39 or 473' north and 85' east of the South Quarter, Sec. 1, T27S, R2E. Elev. = 1367.80 NGVD 29
- BM#5 Railroad spike in north side of power pole, 1040' west and 51' south of the southeast corner, Sec. 1, T27S, R2E. Elev. = 1368.50 NGVD 29
- BM#5 Top of fence T-post 6" below ground, 8' NNE of the northwest corner of Lot 1, Blk. 2. Elev. = 1375.29 NGVD 29.

**NOTES**

FRONTYARD SETBACK IS PLATTED AT 25'. WHERE ADDITIONAL SETBACK IS NOTED ON THIS PLAN, ADDITIONAL DRIVE LENGTH MAY BE REQUIRED TO.



- LEGEND**
- CONIFEROUS TREE & DIAMETER
  - DECIDUOUS TREE & DIAMETER
  - SIGN
  - BUSH
  - EDGE OF TREES
  - FENCE
  - SANITARY SEWER MANHOLE
  - GAS METER
  - POLE
  - HLP - HIGH LINE POLE
  - GATE
  - WALL
  - LP - LIGHT POLE
  - FH - FIRE HYDRANT
  - WV - WATER VALVE
  - WM - WATER METER
  - PPA - POWER POLE AND GUY ANCHOR
  - TR - TELEPHONE RISER
  - INLET
  - PROP. HOUSE ELEV.
  - EXIST. PLOT PLAN HOUSE ELEV.
  - STORM SEWER PIPE
  - WATER LINE
  - SANITARY SEWER AND SERVICE RISERS
  - GAS LINE
  - TELEPHONE LINE
  - UNDERGROUND ELECTRIC LINE
  - OVERHEAD TELEPHONE
  - OVERHEAD ELECTRIC
  - UNDERGROUND FIBER OPTIC CABLE
  - SECTION CORNER
  - PROPER CORNER FOUND
  - BENCHMARK
  - WO - WALK OUT
  - VO - VIEW OUT
  - PVO - PARTIAL VIEW OUT
  - PWO - PARTIAL WALK OUT
  - NVO - NO VIEW OUT

**MKEC ENGINEERING CONSULTANTS, INC.**

**MONARCH LANDING ADDITION**

**LOT GRADING PLAN**

411 N. WEBB ROAD WICHITA, KS. 67206 316-684-9600

JTC DESIGN BY: JTC CHECKED BY: JTC

SMB DRAWN BY: SMB

MAY 2007 DATE: 06201 JOB NO. 1 / 1 SHEET/OF

