

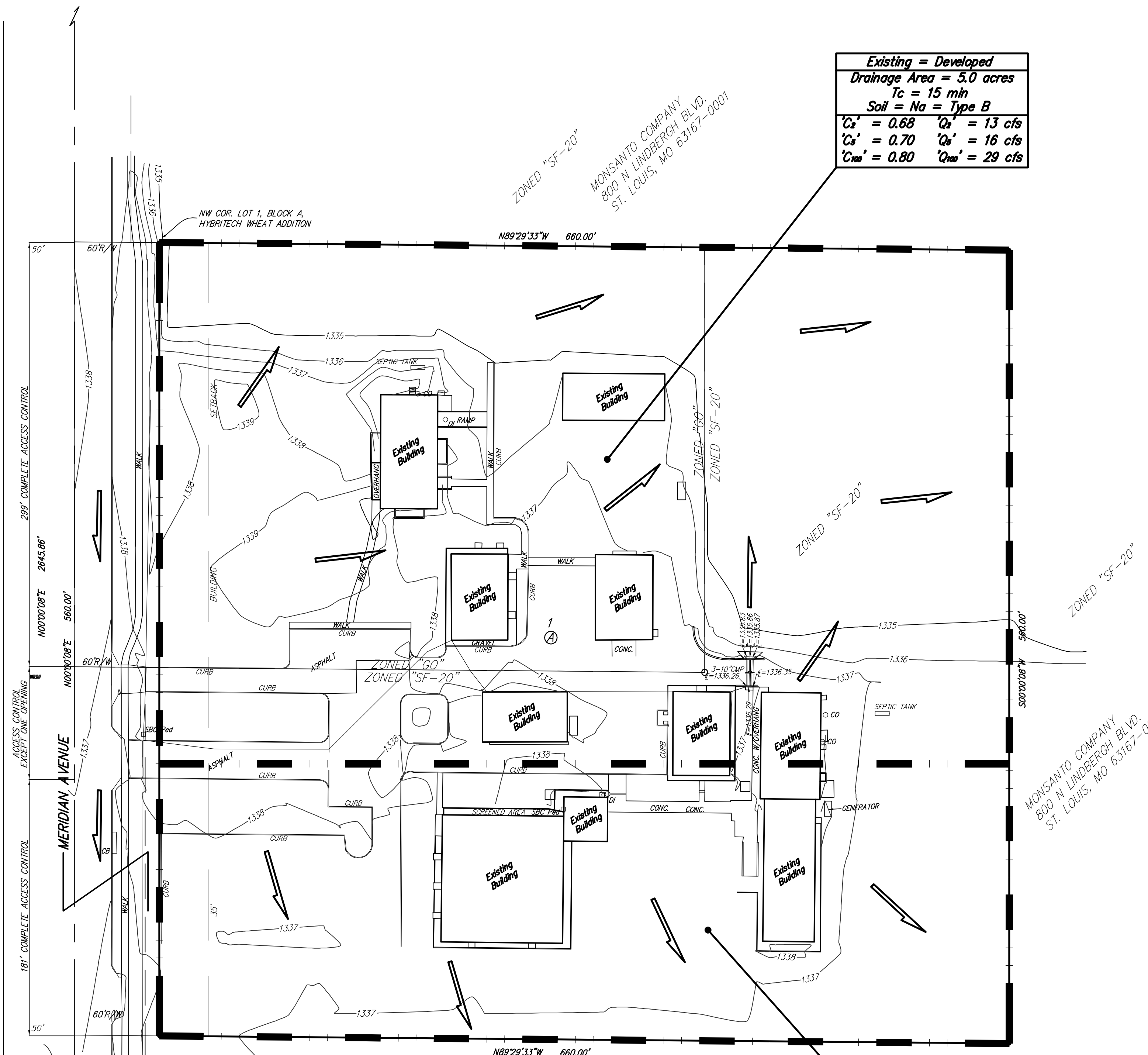
DRAINAGE PLAN

MONSANTO ADDITION

SEDGWICK COUNTY, KANSAS

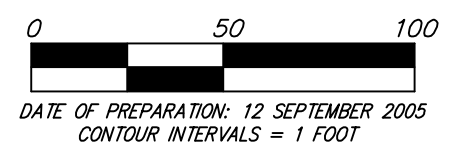
Existing = Developed	
Drainage Area = 5.0 acres	
Tc = 15 min	
Soil = Na = Type B	
C ₂ ' = 0.68	Q ₂ ' = 13 cfs
C ₅ ' = 0.70	Q ₅ ' = 16 cfs
C ₁₀₀ ' = 0.80	Q ₁₀₀ ' = 29 cfs

Existing = Developed	
Drainage Area = 2.7 acres	
Tc = 15 min	
Soil = Na = Type B	
C ₂ ' = 0.68	Q ₂ ' = 7.0 cfs
C ₅ ' = 0.70	Q ₅ ' = 9.0 cfs
C ₁₀₀ ' = 0.80	Q ₁₀₀ ' = 16 cfs



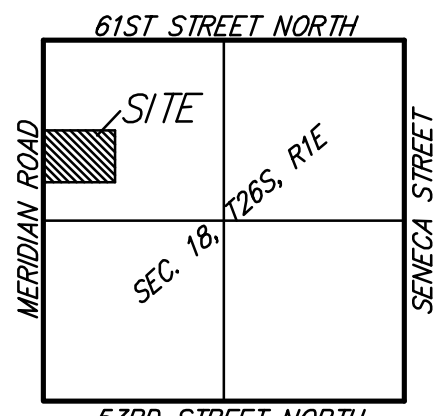
SE COR. NW1/4, SEC. 18,
TWP. 26-S, R-1-E
N89°29'33"W 2434.04'

SW COR. NW1/4, SEC. 18,
TWP. 26-S, R-1-E



DATE OF PREPARATION: 12 SEPTEMBER 2005
CONTOUR INTERVALS = 1 FOOT

BENCHMARK:
COW BENCH MARK AT THE INTERSECTION OF
MERIDIAN AND 53RD ST. NORTH, NE CORNER TOP
OF CONCRETE HEADWALL.



VICINITY MAP

12 SEPTEMBER 2005

Baughman Company, P.A.
315 Ellis St. Wichita, KS 67211 P 316-262-7271 F 316-262-0149

Baughman ENGINEERING | SURVEYING | PLANNING | LANDSCAPE ARCHITECTURE