

Drainage Plan

Mosher's Seamhas Addition

Wichita, Sedgwick County, Kansas

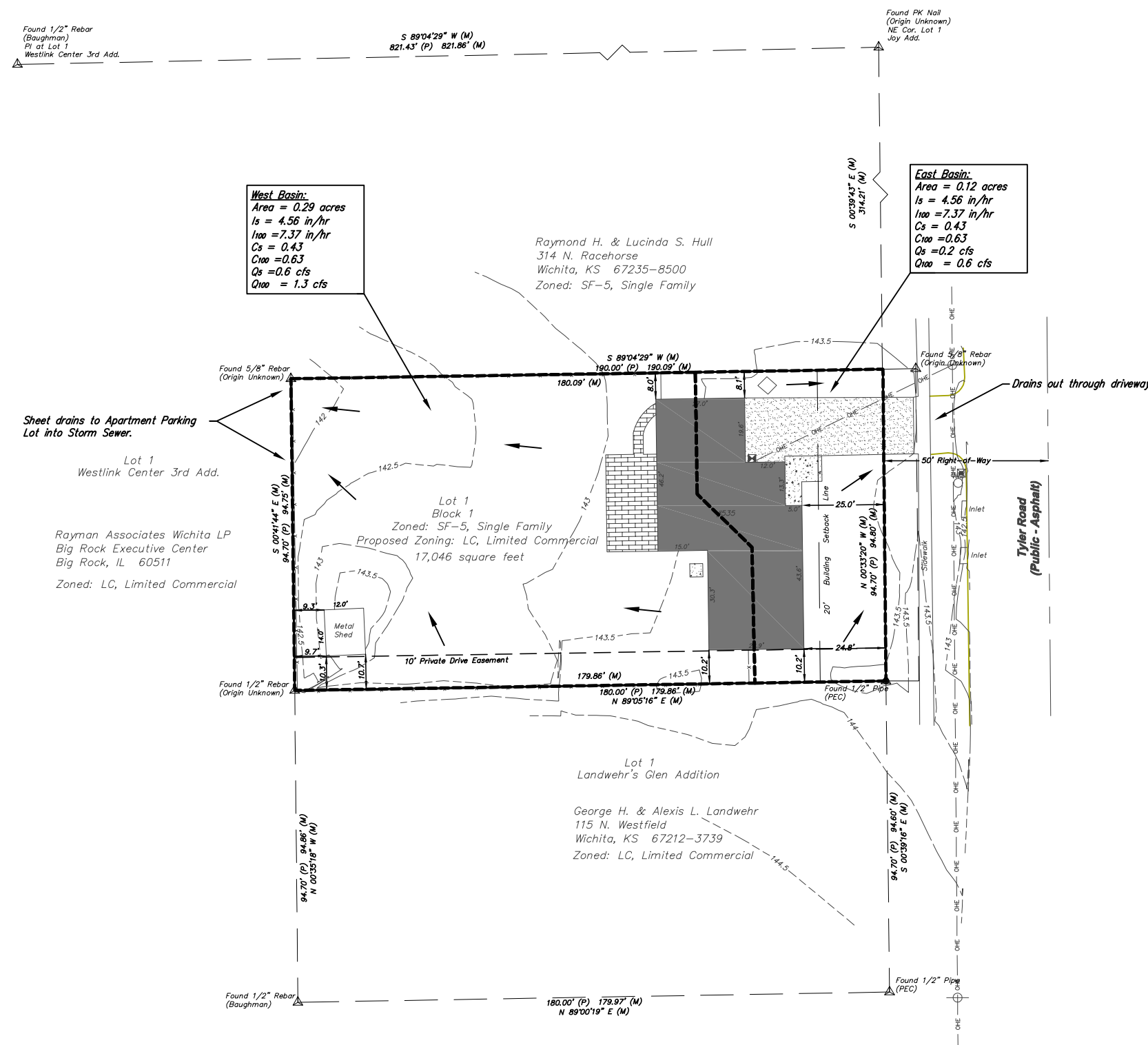
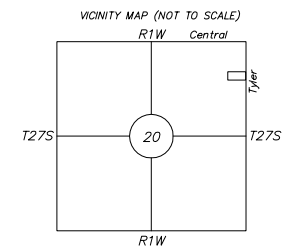


SCALE : 1" = 20'

Owner:
 Ron Mosher
 5070 SE 160th Avenue
 Norwich, KS 67118

Benchmark:
 Tyler and Maple - COW Benchmark.
 NE corner of intersection. 50.7' north
 and 39.3 feet east of centerline both.
 64.3' southwest to section corner iron.
 BM in turn island. Elev = 144.12

Notes:
 Rotation Angle = Geodetic North



West Basin:
 Area = 0.29 acres
 Is = 4.56 in/hr
 I100 = 7.37 in/hr
 Cs = 0.43
 C100 = 0.63
 Qs = 0.6 cfs
 Q100 = 1.3 cfs

East Basin:
 Area = 0.12 acres
 Is = 4.56 in/hr
 I100 = 7.37 in/hr
 Cs = 0.43
 C100 = 0.63
 Qs = 0.2 cfs
 Q100 = 0.6 cfs

Raymond H. & Lucinda S. Hull
 314 N. Racehorse
 Wichita, KS 67235-8500
 Zoned: SF-5, Single Family

Sheet drains to Apartment Parking
 Lot into Storm Sewer.
 Lot 1
 Westlink Center 3rd Add.
 Rayman Associates Wichita LP
 Big Rock Executive Center
 Big Rock, IL 60511
 Zoned: LC, Limited Commercial

Lot 1
 Landwehr's Glen Addition
 George H. & Alexis L. Landwehr
 115 N. Westfield
 Wichita, KS 67212-3739
 Zoned: LC, Limited Commercial

MOSHER'S SEAMHAS ADDITION DRAINAGE PLAN WICHITA, KANSAS			
	Ruggles & Bohm, P.A. Engineering, Surveying, Land Planning		
	924 North Main Wichita, Kansas 67203 www.rbkansas.com (316) 264-8008 (316) 264-4621 fax E-mail: info@rbkansas.com		
DRAWING FILE Base {MODEL}	PROJECT NUMBER	DATE June 8, 2006	SHEET 1 OF 1