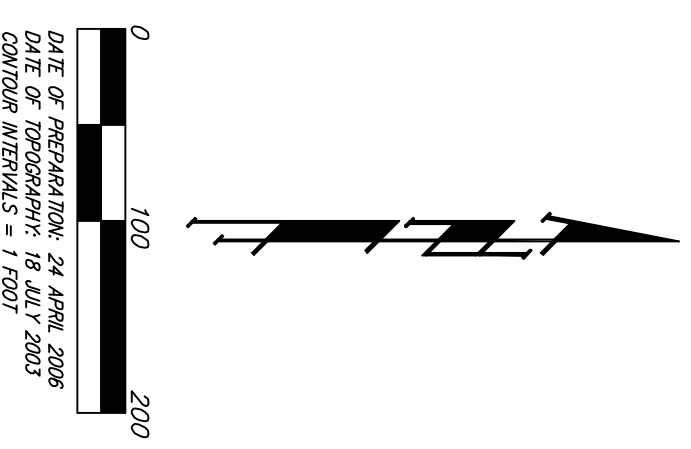
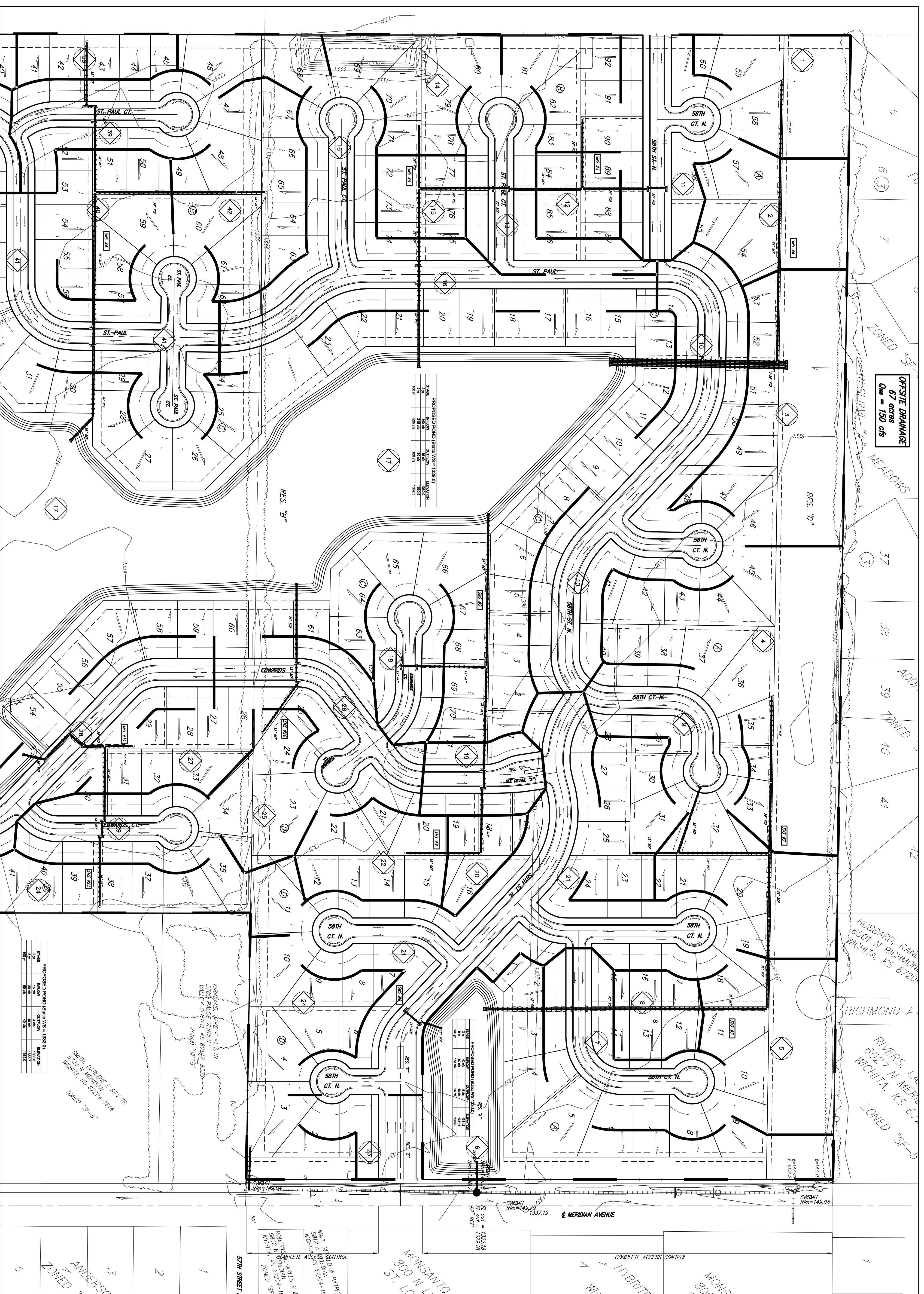


# DRAINAGE PLAN NORTHGATE ADDITION WICHITA, SEDGWICK COUNTY, KANSAS



**BENCHMARK: MARK AT THE CORNER OF WEST STREET AND 58TH STREET NORTH, NE CORNER TOP OF CONCRETE HEADWALL.**

4400 FT NORTH OF CENTER LINE  
3700 FT EAST OF CENTER LINE  
5000 FT NE OF AND RADIAL TO CORNER  
2800 FT EAST OF SECTION LINE  
ELEV = 1331.37 (NAD83) (143.97 CITY DATUM)

Basin ID	Area	Existing Flows		Developed Flows	
		3Yr	5Yr	3Yr	5Yr
1	1.0	0.5	0.5	0.5	0.5
2	2.0	1.0	1.0	1.0	1.0
3	3.0	1.5	1.5	1.5	1.5
4	4.0	2.0	2.0	2.0	2.0
5	5.0	2.5	2.5	2.5	2.5
6	6.0	3.0	3.0	3.0	3.0
7	7.0	3.5	3.5	3.5	3.5
8	8.0	4.0	4.0	4.0	4.0
9	9.0	4.5	4.5	4.5	4.5
10	10.0	5.0	5.0	5.0	5.0
11	11.0	5.5	5.5	5.5	5.5
12	12.0	6.0	6.0	6.0	6.0
13	13.0	6.5	6.5	6.5	6.5
14	14.0	7.0	7.0	7.0	7.0
15	15.0	7.5	7.5	7.5	7.5
16	16.0	8.0	8.0	8.0	8.0
17	17.0	8.5	8.5	8.5	8.5
18	18.0	9.0	9.0	9.0	9.0
19	19.0	9.5	9.5	9.5	9.5
20	20.0	10.0	10.0	10.0	10.0
21	21.0	10.5	10.5	10.5	10.5
22	22.0	11.0	11.0	11.0	11.0
23	23.0	11.5	11.5	11.5	11.5
24	24.0	12.0	12.0	12.0	12.0
25	25.0	12.5	12.5	12.5	12.5
26	26.0	13.0	13.0	13.0	13.0
27	27.0	13.5	13.5	13.5	13.5
28	28.0	14.0	14.0	14.0	14.0
29	29.0	14.5	14.5	14.5	14.5
30	30.0	15.0	15.0	15.0	15.0
31	31.0	15.5	15.5	15.5	15.5
32	32.0	16.0	16.0	16.0	16.0
33	33.0	16.5	16.5	16.5	16.5
34	34.0	17.0	17.0	17.0	17.0
35	35.0	17.5	17.5	17.5	17.5
36	36.0	18.0	18.0	18.0	18.0
37	37.0	18.5	18.5	18.5	18.5
38	38.0	19.0	19.0	19.0	19.0
39	39.0	19.5	19.5	19.5	19.5
40	40.0	20.0	20.0	20.0	20.0
41	41.0	20.5	20.5	20.5	20.5
42	42.0	21.0	21.0	21.0	21.0
43	43.0	21.5	21.5	21.5	21.5
44	44.0	22.0	22.0	22.0	22.0
45	45.0	22.5	22.5	22.5	22.5
46	46.0	23.0	23.0	23.0	23.0
47	47.0	23.5	23.5	23.5	23.5
48	48.0	24.0	24.0	24.0	24.0
49	49.0	24.5	24.5	24.5	24.5
50	50.0	25.0	25.0	25.0	25.0
51	51.0	25.5	25.5	25.5	25.5
52	52.0	26.0	26.0	26.0	26.0
53	53.0	26.5	26.5	26.5	26.5
54	54.0	27.0	27.0	27.0	27.0
55	55.0	27.5	27.5	27.5	27.5
56	56.0	28.0	28.0	28.0	28.0
57	57.0	28.5	28.5	28.5	28.5
58	58.0	29.0	29.0	29.0	29.0
59	59.0	29.5	29.5	29.5	29.5
60	60.0	30.0	30.0	30.0	30.0
61	61.0	30.5	30.5	30.5	30.5
62	62.0	31.0	31.0	31.0	31.0
63	63.0	31.5	31.5	31.5	31.5
64	64.0	32.0	32.0	32.0	32.0
65	65.0	32.5	32.5	32.5	32.5
66	66.0	33.0	33.0	33.0	33.0
67	67.0	33.5	33.5	33.5	33.5
68	68.0	34.0	34.0	34.0	34.0
69	69.0	34.5	34.5	34.5	34.5
70	70.0	35.0	35.0	35.0	35.0
71	71.0	35.5	35.5	35.5	35.5
72	72.0	36.0	36.0	36.0	36.0
73	73.0	36.5	36.5	36.5	36.5
74	74.0	37.0	37.0	37.0	37.0
75	75.0	37.5	37.5	37.5	37.5
76	76.0	38.0	38.0	38.0	38.0
77	77.0	38.5	38.5	38.5	38.5
78	78.0	39.0	39.0	39.0	39.0
79	79.0	39.5	39.5	39.5	39.5
80	80.0	40.0	40.0	40.0	40.0
81	81.0	40.5	40.5	40.5	40.5
82	82.0	41.0	41.0	41.0	41.0
83	83.0	41.5	41.5	41.5	41.5
84	84.0	42.0	42.0	42.0	42.0
85	85.0	42.5	42.5	42.5	42.5
86	86.0	43.0	43.0	43.0	43.0
87	87.0	43.5	43.5	43.5	43.5
88	88.0	44.0	44.0	44.0	44.0
89	89.0	44.5	44.5	44.5	44.5
90	90.0	45.0	45.0	45.0	45.0
91	91.0	45.5	45.5	45.5	45.5
92	92.0	46.0	46.0	46.0	46.0
93	93.0	46.5	46.5	46.5	46.5
94	94.0	47.0	47.0	47.0	47.0
95	95.0	47.5	47.5	47.5	47.5
96	96.0	48.0	48.0	48.0	48.0
97	97.0	48.5	48.5	48.5	48.5
98	98.0	49.0	49.0	49.0	49.0
99	99.0	49.5	49.5	49.5	49.5
100	100.0	50.0	50.0	50.0	50.0
<b>TOTAL</b>	<b>168</b>	<b>280</b>	<b>380</b>	<b>330</b>	<b>440</b>