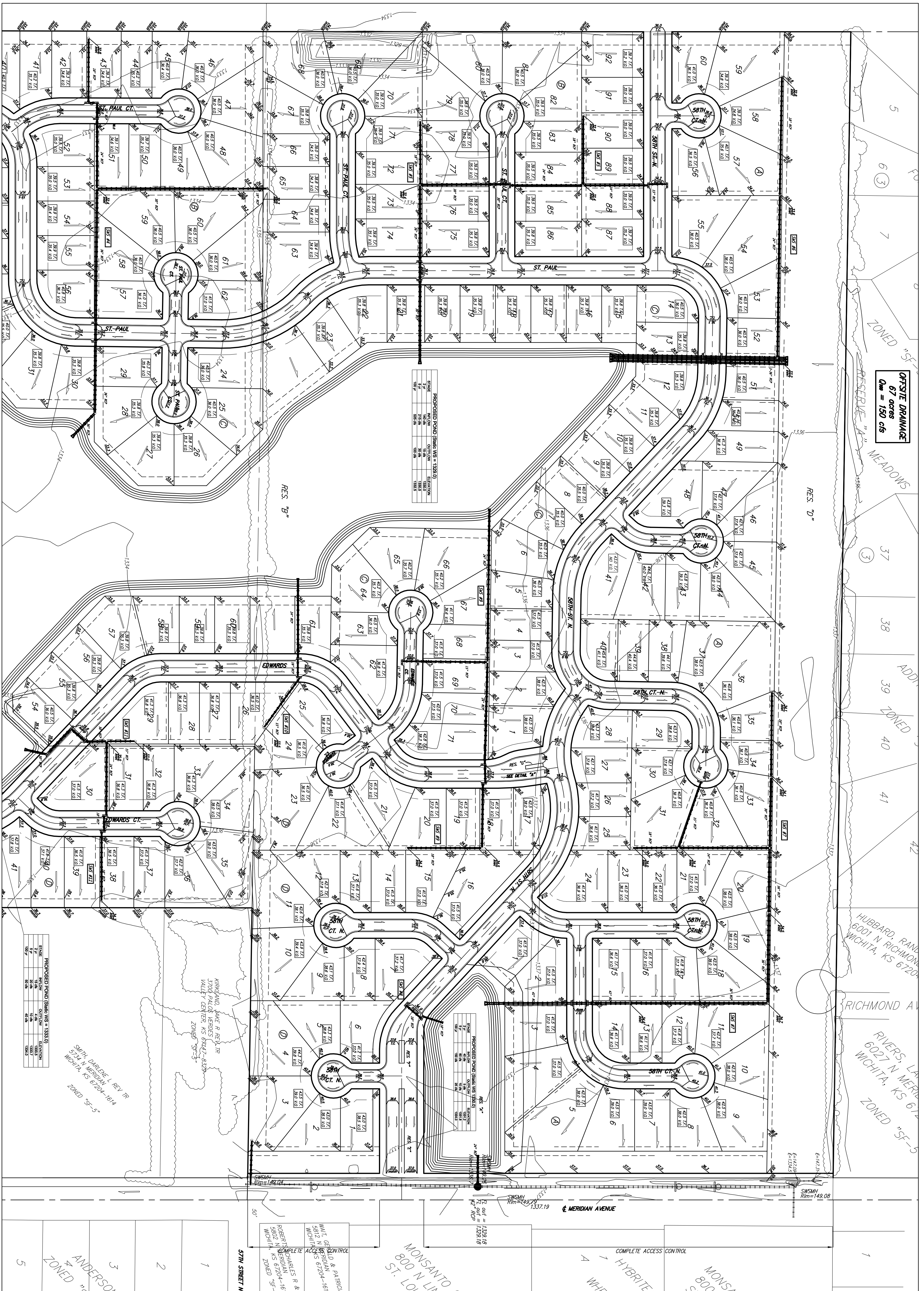


GRADING PLAN NORTHGATE ADDITION WICHITA, SEDGWICK COUNTY, KANSAS



OFFSITE DRAINAGE
67 cfs @ 150 cfs

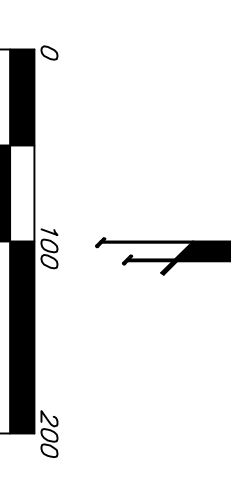
ZONED "SF-5"
RESERVE "A"
MEADOWS

ZONED "SF-5"
RESERVE "A"
MEADOWS

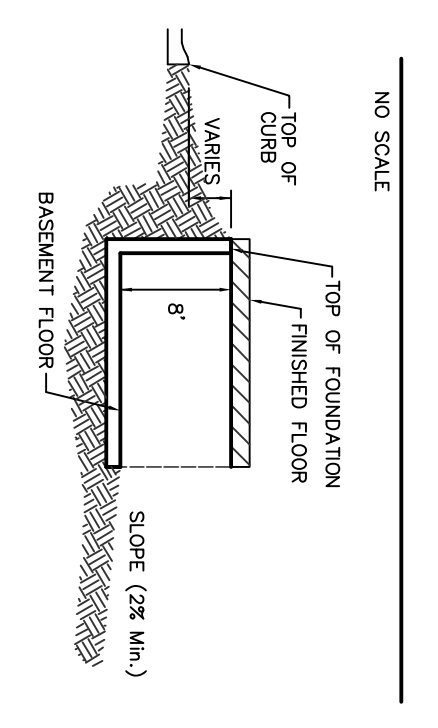
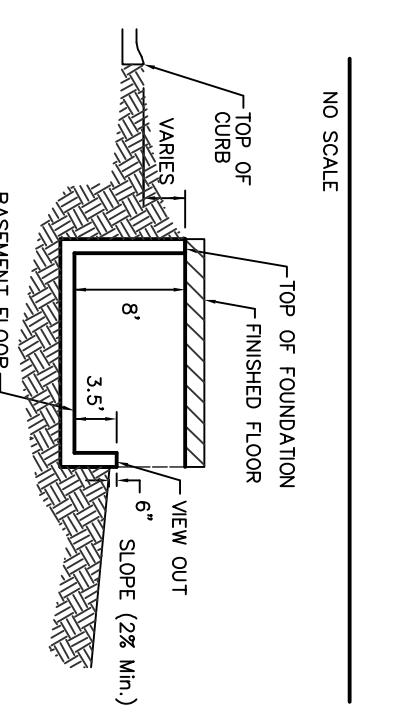
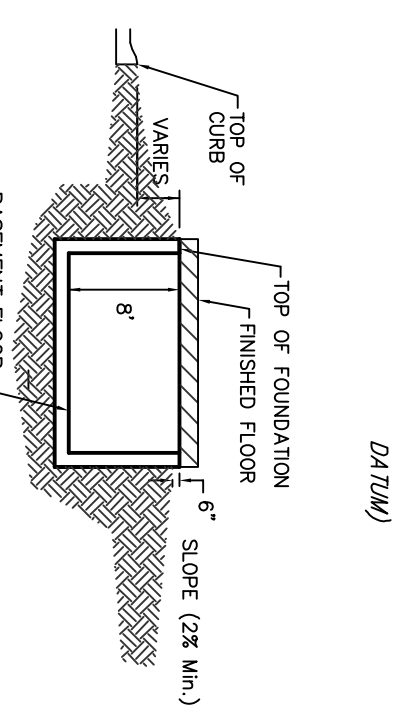
HUBBARD, RANNEY
6001 N. RICHMOND
WICHITA, KS 67204

RIVERS, LARSEN
6027 N. RICHMOND
WICHITA, KS 67204

ZONED "SF-5"



BENCHMARK AT THE CORNER OF MERIDIAN AND 53RD ST. NORTH, NE CORNER TOP OF CONCRETE FOUNDATION.
44.00 FT NORTH OF CENTER LINE
37.00 FT EAST OF CENTER LINE
50.00 FT NE CORNER TO CORNER
50.00 FT EAST OF SECTION CORNER
ELEV = 1331.37 MGD028 (4437 CITY DATUM)



- NOTES:**
1. PROPOSED TOP OF FOUNDATION ELEVATIONS ARE SHOWN ON PLANS. CONTRACTOR TO SET FINISHED FLOOR AND CHANGE FLOOR ELEVATIONS. ALL STREET ELEVATIONS SHOWN ON PLANS ARE FOR TOP OF CURB (FULL-HEIGHT).
 2. THIS GRADING PLAN IS DESIGNED WITH VIEW-OUTS AND WALK-OUTS. ELEVATIONS SHOWN AS XXX.XX DEPICT VIEW-OUT STRUCTURES. ELEVATIONS SHOWN AS XXX.XX DEPICT WALK-OUT STRUCTURES.
 3. ALL LOTS SHALL MEET MINIMUM PAD REQUIREMENT AS SHOWN ON THE RECORDED PLAT.

LOT	AREA (SQ. FT.)	MINIMUM PAD AREA (SQ. FT.)
1-5	4,114-21	1,500
6-11	4,114-21	1,500
12-17	4,114-21	1,500
18-23	4,114-21	1,500
24-29	4,114-21	1,500
30-35	4,114-21	1,500
36-41	4,114-21	1,500
42-47	4,114-21	1,500
48-53	4,114-21	1,500
54-59	4,114-21	1,500
60-65	4,114-21	1,500
66-71	4,114-21	1,500
72-77	4,114-21	1,500
78-83	4,114-21	1,500
84-89	4,114-21	1,500
90-95	4,114-21	1,500
96-101	4,114-21	1,500

4. LOT DIMENSIONS HAVE BEEN OMITTED ON THIS PLAN REFER TO THE RECORDED PLAT FOR FINAL DIMENSION, EASEMENT, & BUILDING SETBACK INFORMATION.
5. HOUSE PAD ELEVATIONS DERIVED WITH BOLD DIMENSIONS THAT DEEP FOOTINGS OR DEEP FOUNDATIONS MAY BE REQUIRED.
6. A DRAINAGE PLAN HAS BEEN DEVELOPED FOR THIS SUBDIVISION AND IS ON FILE WITH THE CITY OF WICHITA, KANSAS. DRAINAGE INTENT SHALL REMAIN AS DEPICTED OR AS MODIFIED WITH THE APPROVAL OF THE CITY ENGINEER OF THE CITY OF WICHITA, KANSAS. NO DRAINAGE PLAN SHALL BE ALLOWED.
7. ALL ELEVATIONS SHOWN ARE IN MGD02.