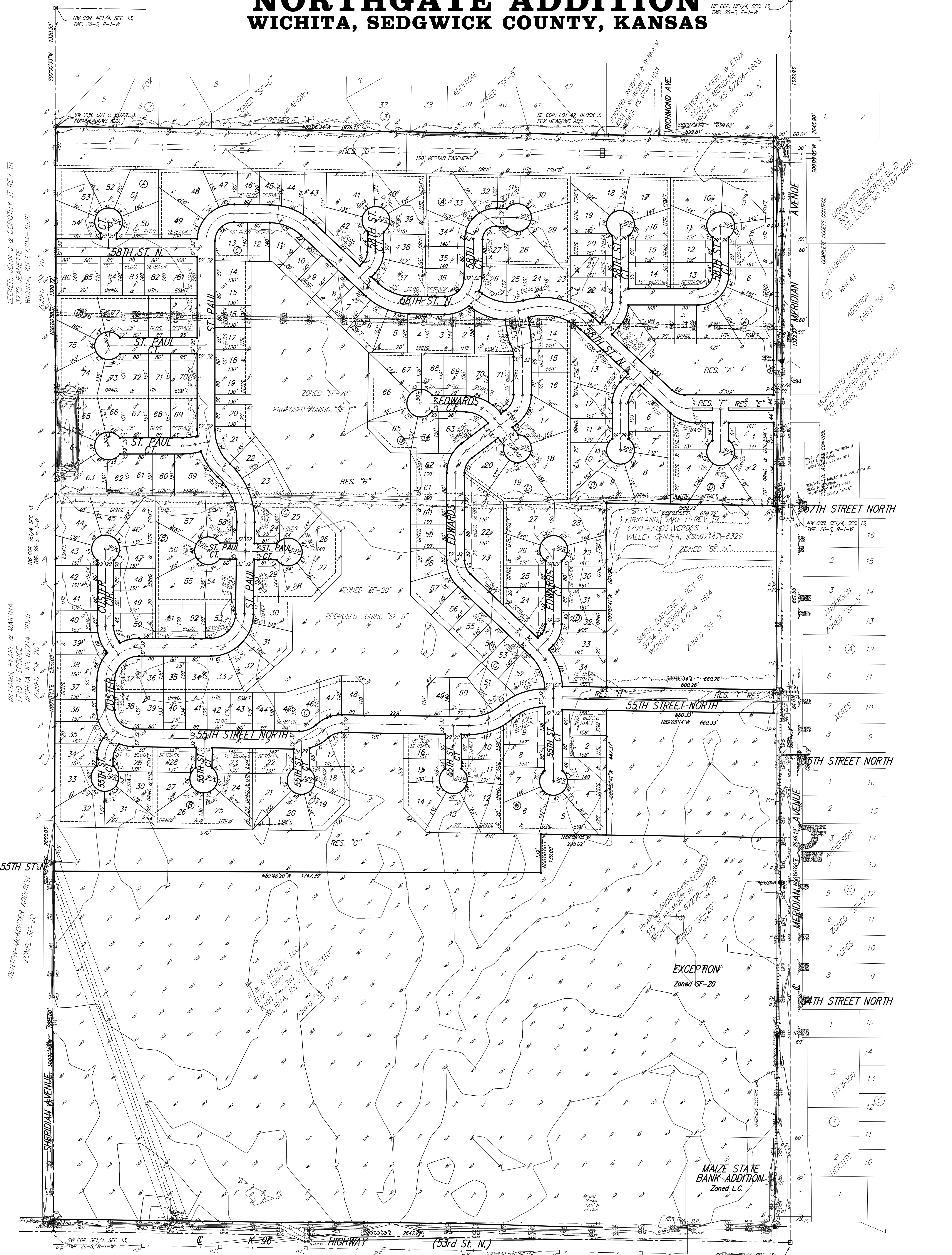


PRELIMINARY PLAT  
**NORTHGATE ADDITION**  
**WICHITA, SEDGWICK COUNTY, KANSAS**



LEEKER, JOHN J & DOROTHY JT REV TR  
 3772 JEANNETTE  
 WICHITA, KS 67204-3926

WILLIAMS, PEARL & MARTHA  
 1740 N SPRUCE  
 WICHITA, KS 67214-2029

DENTON-McWORTER ADDITION  
 ZONED SF-20

MONSANTO COMPANY  
 800 N LINDBERGH BLVD  
 ST. LOUIS, MO 63167-0001

MONSANTO COMPANY  
 800 N LINDBERGH BLVD  
 ST. LOUIS, MO 63167-0001

ANDERSON  
 ZONED SF-5

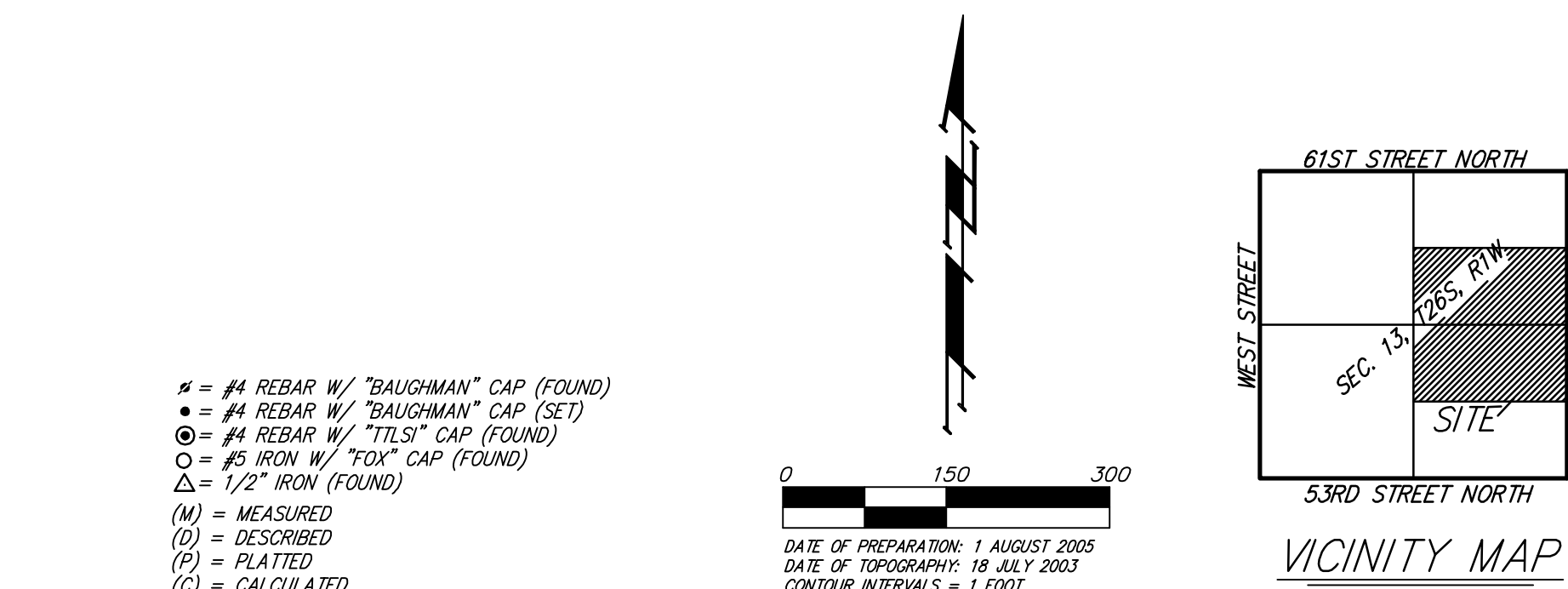
ANDERSON  
 ZONED SF-5

ANDERSON  
 ZONED SF-5

ANDERSON  
 ZONED SF-5

LEEWOOD  
 ZONED SF-5

HEIGHTS  
 ZONED SF-5



OWNER:  
 R & R REALTY, LLC  
 P.O. BOX 75337  
 WICHITA, KS 67275-5337  
 722-2417

LEGAL DESCRIPTION:  
 A TRACT OF LAND IN THE SE1/4 OF SECTION 13, TWP. 26-S, R-1-W OF THE 6TH P.M., SEDGWICK COUNTY, KANSAS, TOGETHER WITH THE SW1/2 OF THE NE1/4 OF SECTION 13, TWP. 26-S, R-1-W OF THE 6TH P.M., SEDGWICK COUNTY, KANSAS, ALL BEING SUBJECT TO ROAD RIGHTS-OF-WAY OF RECORD.

BENCHMARK:  
 COW BENCH MARK AT THE INTERSECTION OF MERIDIAN AND 53RD ST. NORTH, NE CORNER TOP OF CONCRETE HEADWALL.

44.00 FT NORTH OF CENTER LINE.  
 37.00 FT EAST OF CENTER LINE.  
 50.00 FT NE OF SECTION CORNER IRON.  
 9.00 FT NE OF AND RADIAL TO CURB.  
 26.00 FT EAST OF SECTION LINE.

ELEV. = 1331.37 NGVD29 (143.97 CITY DATUM)

RESERVES "A", "B", AND "C" ARE RESERVED FOR LANDSCAPING, OPEN SPACE, LAKES, STREAMS, RECREATIONAL PURPOSES, DRAINAGE PURPOSES, AND UTILITIES AS CONFIRMED TO EASEMENTS.

RESERVE "D" IS RESERVED FOR OPEN SPACE, LANDSCAPING, DRAINAGE PURPOSES, AND UTILITIES AS CONFIRMED TO EASEMENTS.

RESERVES "E", "F", "G", "H", "I", AND "J" ARE RESERVED FOR ENTRY MONUMENTS, OPEN SPACE, STREETS, LANDSCAPING, DRAINAGE PURPOSES, AND UTILITIES.

C:\KRIS\Jhogo2.jpg