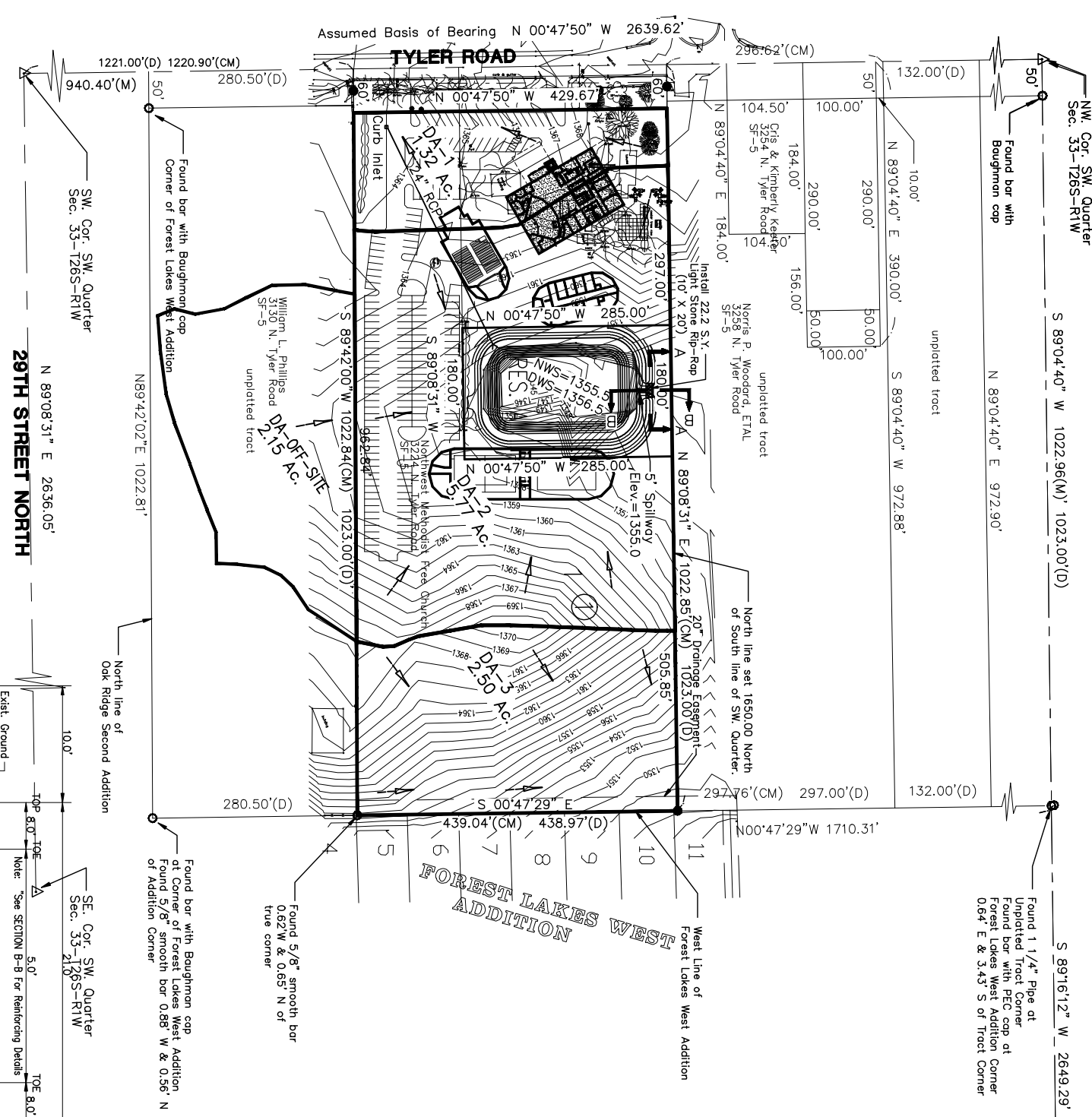
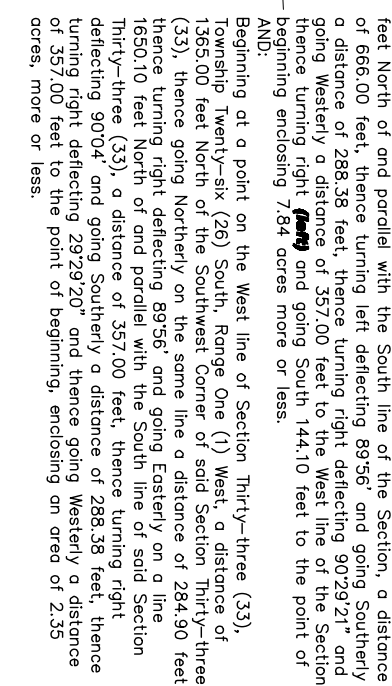
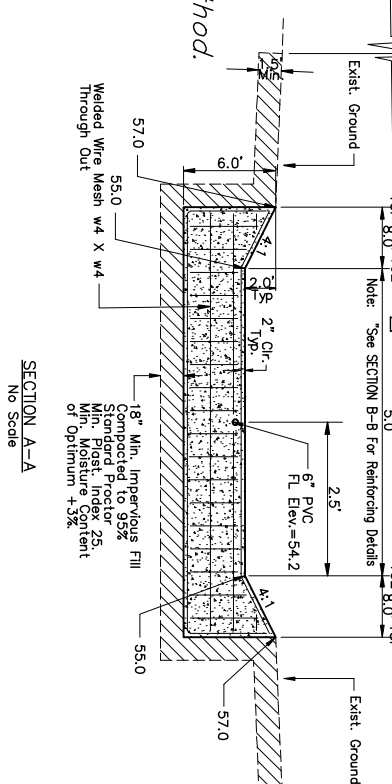


# DRAINAGE PLAN FOR NORTHWEST METHODIST ADDITION WICHITA, SEDGWICK COUNTY, KANSAS



- NOTES:**
- Determination of Q's was made using the rational method.
  - c's used were as follows:
- |                  |      |           |      |
|------------------|------|-----------|------|
| 5yr frequency    | 0.33 | Developed | 0.51 |
| 100 yr frequency | 0.57 | Developed | 0.66 |



**PROPOSED POND STORAGE TABLE**

Elevation	Acres	Storage Acre-Feet	Total Storage Acre-Feet
1357	0.78	0.74	4.12
1356	0.71	0.68	3.37
1355	0.65	0.58	2.69
1354	0.51	0.43	2.10
1353	0.48	0.46	1.61
1352	0.44	0.42	1.15
1351	0.40	0.38	0.73
1350	0.37	0.35	0.35
1349	0.33	0.00	0.00

**EXISTING POND STORAGE TABLE**

Elevation	Acres	Storage Acre-Feet	Total Storage Acre-Feet
1356	4.362566	1.0015	4.2467
1355	3.507341	0.8052	3.3433
1354	2.256179	0.5179	2.6818
1353	2.081947	0.4779	2.1838
1352	1.912124	0.4390	1.7254
1351	1.746712	0.4010	1.3054
1350	1.585094	0.3639	0.9229
1349	1.416663	0.3252	0.5784
1348	9.310664	0.2137	0.3089
1347	6.551564	0.1504	0.1268
1346	4.497195	0.1033	0.0000
1345	9.061000	0.0208	0.0000

