

# DRAINAGE PLAN FOR NORTHWEST METHODIST ADDITION WICHITA, SEDGWICK COUNTY, KANSAS

NW. Cor. SW. Quarter  
Sec. 33-1265-R1W

S 89°04'40" W 1022.96'(M) 1023.00'(D)

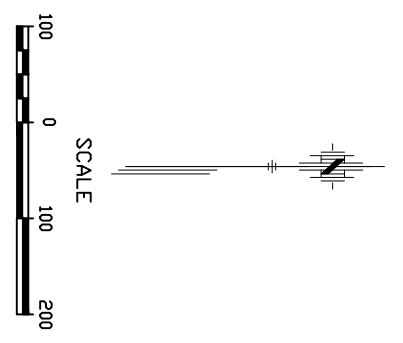
S 89°04'40" E 972.90'

S 89°16'12" W 2649.29'

NE. Cor. SW. Quarter  
Sec. 33-1265-R1W

Area #	Area	Inch	Q <sub>3</sub>	Undeveloped		Developed	
				Q <sub>100</sub>	CN	Q <sub>3</sub>	Q <sub>100</sub>
1	1.32	4.62	7.40	2.02	5.58	72.0	6.46
2	5.77	4.62	7.40	8.80	24.35	72.0	28.20
3	2.50	4.62	7.40	3.81	10.55	72.0	*
Offsite	2.15	4.62	7.40	3.28	9.06	72.0	*

\* Undeveloped



PROPOSED POND STORAGE TABLE

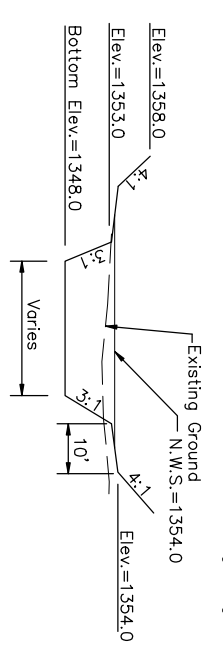
Elevation	Storage	Total Storage	Q <sub>3</sub>	Q <sub>100</sub>
Acre-Ft.	Acre-Ft.	Acre-Ft.		
1357.72	0.89	2.25	24.44	7.22
1357.00	0.85	2.23	3.12	3.12
1356.72	0.83	2.01	1.25	1.42
1356.00	0.78	1.44	0.80	0.81
1355.00	0.72	0.69	0.00	0.00
1354.00	0.66	0.00	0.00	0.00

\* Drawdown through 6" pipe takes just under 25 hours

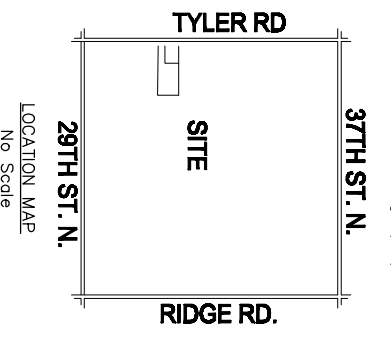
EXISTING POND STORAGE TABLE

Elevation	Storage	Total Storage	Q <sub>3</sub>	Q <sub>100</sub>
Acre-Ft.	Acre-Ft.	Acre-Ft.		
1354.36	0.62	2.95	4.19	25.05
1354.11	0.60	0.00	2.74	2.41
1354.00	0.52	2.25	0.00	0.00
1353.00	0.48	2.25	0.00	0.00
1352.00	0.44	1.79	0.00	0.00
1351.24	0.41	1.46	0.00	0.00
1351.00	0.40	1.37	0.00	0.00
1350.00	0.36	0.98	0.00	0.00
1349.00	0.33	0.27	0.00	0.00
1348.00	0.21	0.18	0.00	0.00
1347.00	0.15	0.13	0.00	0.00
1346.00	0.10	0.06	0.00	0.00
1345.00	0.02	0.00	0.00	0.00

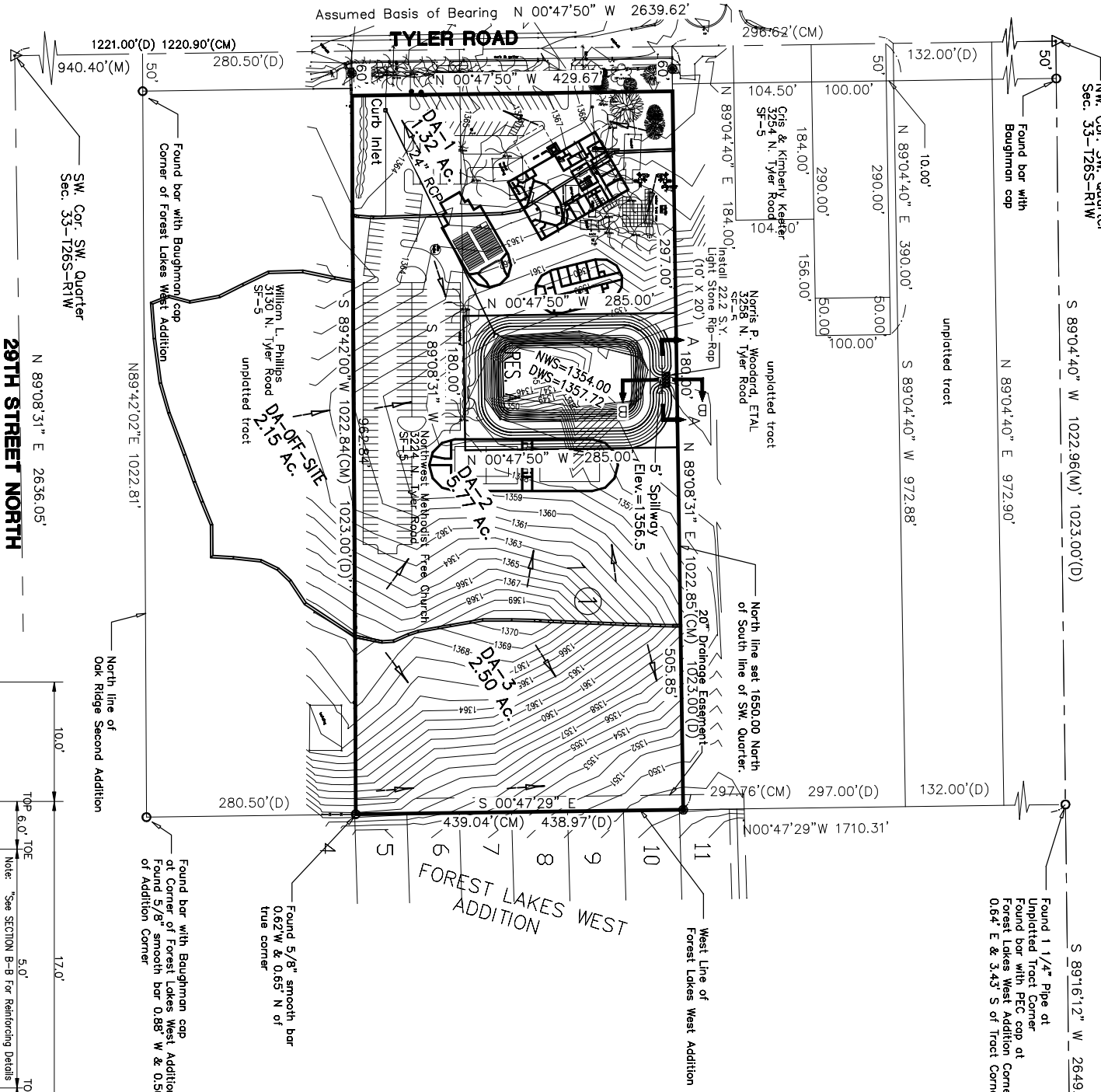
\* Assumes storage begins above 1351.24 for design purposes



TYPICAL POND GRADING



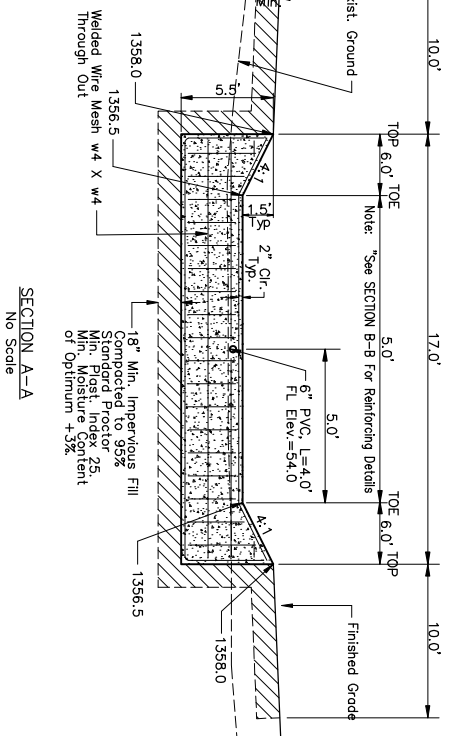
LOCATION MAP



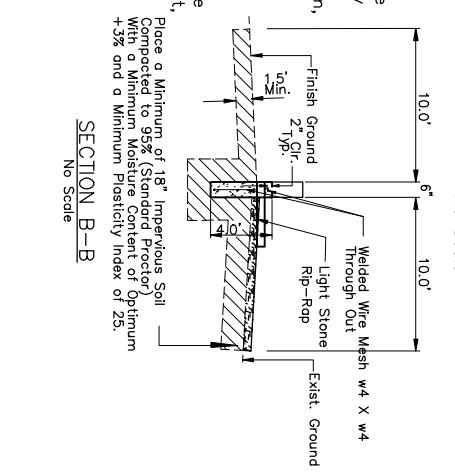
**NOTES:**

- Determination of Q's was made using the rational method.
- c's used were as follows:
 

Undeveloped	0.33	Developed	0.51
5yr frequency	0.57		
100 yr frequency	0.66		



SECTION A-A  
No Scale



SECTION B-B  
No Scale

**PRELIM**

Designed By: T. Austin  
 Drawn By: S. Schmidt  
 874\Drainage.dwg  
 Date: 07/05/06



**POE & ASSOCIATES, INC.**  
**CONSULTING ENGINEERS**  
 5940 E. Central, Suite 200 in Wichita, KS 67208-4242  
 Phone 316/685-4114 in FAX 316/685-4444

NORTHWEST METHODIST ADDITION  
 DRAINAGE PLAN  
 CITY OF WICHITA, KANSAS  
 JIM ARMOUR P.E. - CITY ENGINEER

No.	Date	By	Approved	Revision
△				
△				
△				
△				