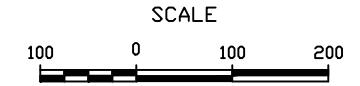
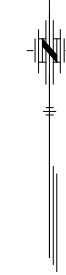


# DRAINAGE PLAN FOR NORTHWEST METHODIST ADDITION WICHITA, SEDGWICK COUNTY, KANSAS



## LEGEND

- = 1/2" Iron Pipe (found)
- = 1/2" Rebar (found)
- = PK Nail (found)
- +
- ▲ = Section Corner
- (M) = Measured
- (P) = Platted
- R.O.W. = Right-of-Way

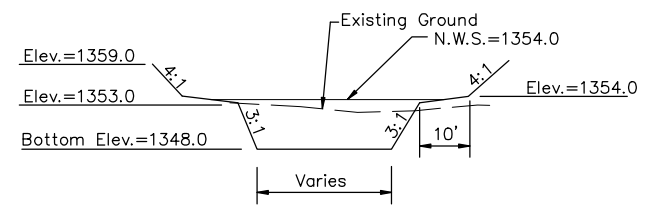
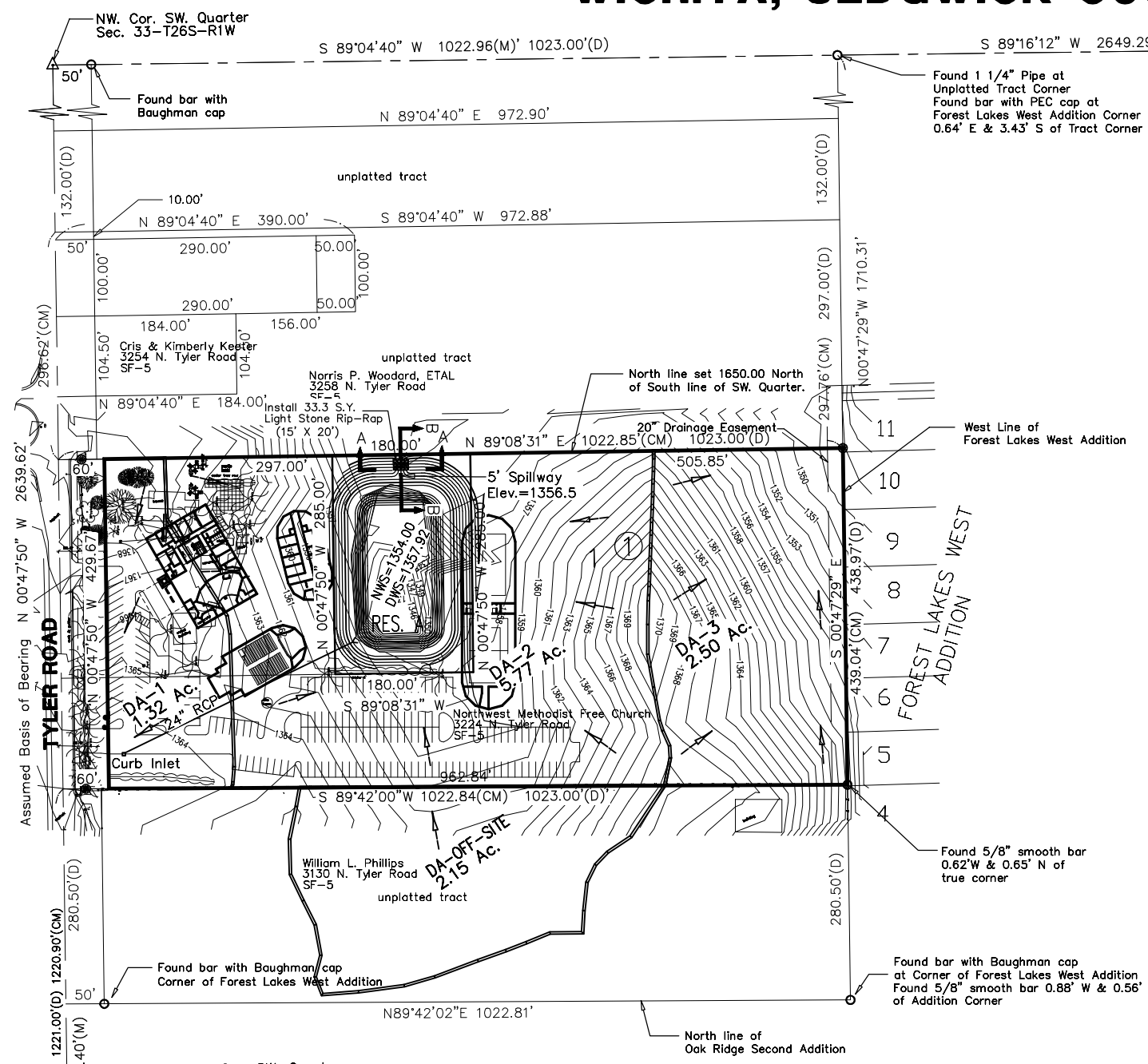
Area #	Area	c	I <sub>100</sub>	Undeveloped			Developed		
				Q <sub>5</sub>	Q <sub>100</sub>	CN	CN	Q <sub>5</sub>	Q <sub>100</sub>
1	1.32	4.62	7.40	2.02	5.58	72.0	91.1	3.12	6.46
2	5.77	4.62	7.40	8.80	24.35	72.0	73.4	13.60	28.20
3	2.50	4.62	7.40	3.81	10.55	72.0	72.0	*	*
Offsite	2.15	4.62	7.40	3.28	9.06	72.0	72.0	*	*

\* Undeveloped

Elevation	Acres	Storage Acre-Ft.	Total Storage Acre-Ft.	Q <sub>5</sub>	Q <sub>100</sub>
1357.97	0.91	0.85	3.10		22.21
1357.00	0.85	0.15	2.25		2.29
1356.82	0.83	0.66	2.10	1.34	1.27
1356.00	0.78	0.75	1.44	1.02	1.04
1355.00	0.72	0.69	0.69	0.59	0.58
1354.00	0.66	0.00	0.00	0.00	0.00

^ Drawdown through 6" pipe takes just over 26 hours

Elevation	Acres	Storage Acre-Ft.	Total Storage Acre-Ft.	Q <sub>5</sub>	Q <sub>100</sub>
1354.36	0.62	0.21	2.95		25.43
1354.00	0.52	0.50	2.74		0.00
1353.00	0.48	0.46	2.25		0.00
1352.00	0.44	0.32	1.79		0.00
1351.25	0.41	0.10	1.46	0.00	0.00
1351.00	0.40	0.38	1.37	0.00	0.00
1350.00	0.36	0.34	0.98	0.00	0.00
1349.00	0.33	0.27	0.64	0.00	0.00
1348.00	0.21	0.18	0.37	0.00	0.00
1347.00	0.15	0.13	0.19	0.00	0.00
1346.00	0.10	0.06	0.06	0.00	0.00
1345.00	0.02	0.00	0.00	0.00	0.00

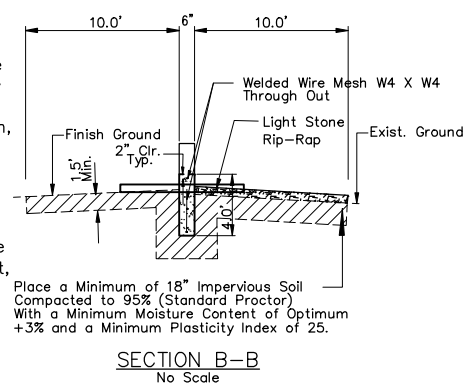
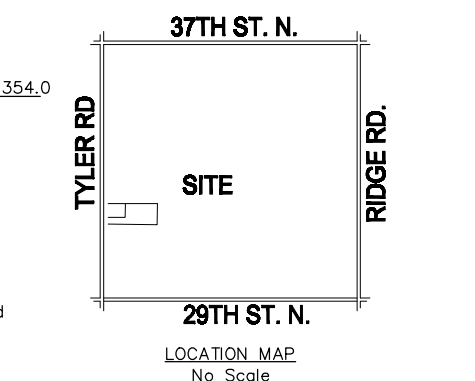


TYPICAL POND GRADING

**LEGAL DESCRIPTION**

A tract of land in the Southwest Quarter of Section 33, T26S, R1W of the 6th P.M., Sedgwick County, Kansas, being more particularly described as: Going Northerly on the West line of Section 33, T26S, R1W, a distance of 1221.00 feet North from the Southwest corner of said section for a point of beginning, thence turning right deflecting 90°29' 21" and going Easterly a distance of 1023.00 feet, thence turning left deflecting 90°29'21" and going Northerly a distance of 438.97 feet, thence turning left deflecting 90°04' and going Westery on a line 1650 feet North of and parallel with the South line of the Section, a distance of 666.00 feet, thence turning left deflecting 89°56' and going Southerly a distance of 288.38 feet, thence turning right deflecting 90°29'21" and going Westery a distance of 357.00 feet to the West line of the Section, thence turning right (left) and going South 144.10 feet to the point of beginning enclosing 7.84 acres more or less.

AND:  
Beginning at a point on the West line of Section Thirty-three (33), Township Twenty-six (26) South, Range One (1) West, a distance of 1365.00 feet North of the Southwest Corner of said Section Thirty-three (33), thence going Northerly on the same line a distance of 284.90 feet, thence turning right deflecting 89°56' and going Easterly on a line 1650.10 feet North of and parallel with the South line of said Section Thirty-three (33), a distance of 357.00 feet, thence turning right deflecting 90°04' and going Southerly a distance of 288.38 feet, thence turning right deflecting 29°29'20" and thence going Westery a distance of 357.00 feet to the point of beginning, enclosing an area of 2.35 acres, more or less.



SECTION A-A  
No Scale

**NOTES:**

- Determination of Q's was made using the rational method.
  - c's used were as follows:
- |                  | Undeveloped | Developed |
|------------------|-------------|-----------|
| 5yr frequency    | 0.33        | 0.51      |
| 100 yr frequency | 0.57        | 0.66      |

Revision

No.	Date	By	Approved

Northwest Methodist Addition

No.	Date	By	Approved

City of Wichita, Kansas

No.	Date	By	Approved

City of Wichita, Kansas

No.	Date	By	Approved

City of Wichita, Kansas

No.	Date	By	Approved

City of Wichita, Kansas

No.	Date	By	Approved

City of Wichita, Kansas

No.	Date	By	Approved

City of Wichita, Kansas

No.	Date	By	Approved

City of Wichita, Kansas

No.	Date	By	Approved

City of Wichita, Kansas

No.	Date	By	Approved

City of Wichita, Kansas

No.	Date	By	Approved

City of Wichita, Kansas

No.	Date	By	Approved

City of Wichita, Kansas

No.	Date	By	Approved

City of Wichita, Kansas

No.	Date	By	Approved

City of Wichita, Kansas

No.	Date	By	Approved

City of Wichita, Kansas

No.	Date	By	Approved

City of Wichita, Kansas

No.	Date	By	Approved

City of Wichita, Kansas

No.	Date	By	Approved

City of Wichita, Kansas

No.	Date	By	Approved

City of Wichita, Kansas

No.	Date	By	Approved

City of Wichita, Kansas

No.	Date	By	Approved

City of Wichita, Kansas

No.	Date	By	Approved

City of Wichita, Kansas

No.	Date	By	Approved

City of Wichita, Kansas

No.	Date	By	Approved

City of Wichita, Kansas

No.	Date	By	Approved

City of Wichita, Kansas

No.	Date	By	Approved

City of Wichita, Kansas

No.	Date	By	Approved

City of Wichita, Kansas

No.	Date	By	Approved

City of Wichita, Kansas

No.	Date	By	Approved

City of Wichita, Kansas

No.	Date	By	Approved

City of Wichita, Kansas

No.	Date	By	Approved

City of Wichita, Kansas

No.	Date	By	Approved

City of Wichita, Kansas

No.	Date	By	Approved

City of Wichita, Kansas

No.	Date	By	Approved

City of Wichita, Kansas

No.	Date	By	Approved

City of Wichita, Kansas

No.	Date	By	Approved

City of Wichita, Kansas

No.	Date	By	Approved

City of Wichita, Kansas

No.	Date	By	Approved

City of Wichita, Kansas

No.	Date	By	Approved

City of Wichita, Kansas

No.	Date	By	Approved

City of Wichita, Kansas

No.	Date	By	Approved

City of Wichita, Kansas

No.	Date	By	Approved

City of Wichita, Kansas

No.	Date	By	Approved

City of Wichita, Kansas

No.	Date	By	Approved

City of Wichita, Kansas

No.	Date	
-----	------	--