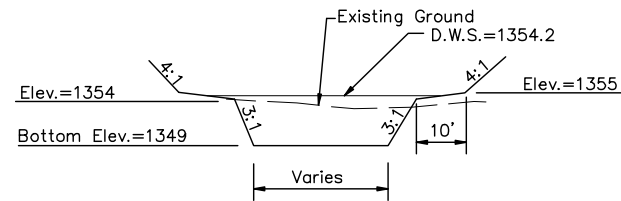
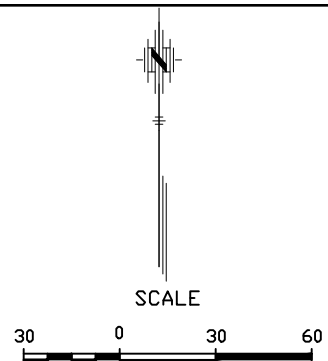
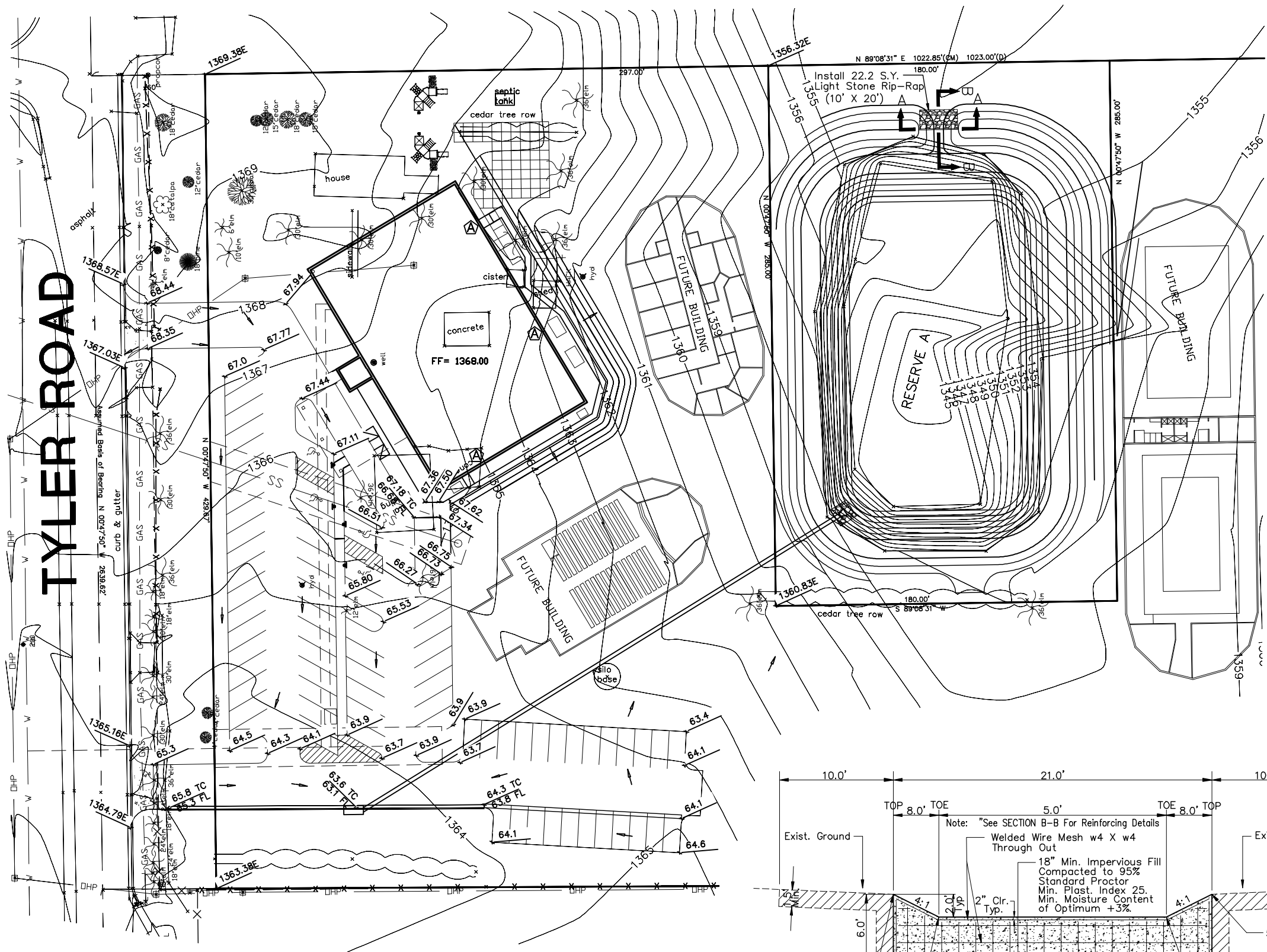
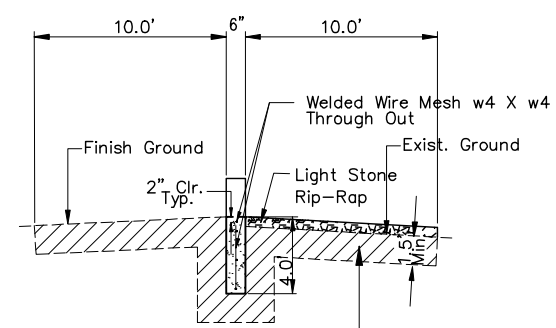


TYLER ROAD

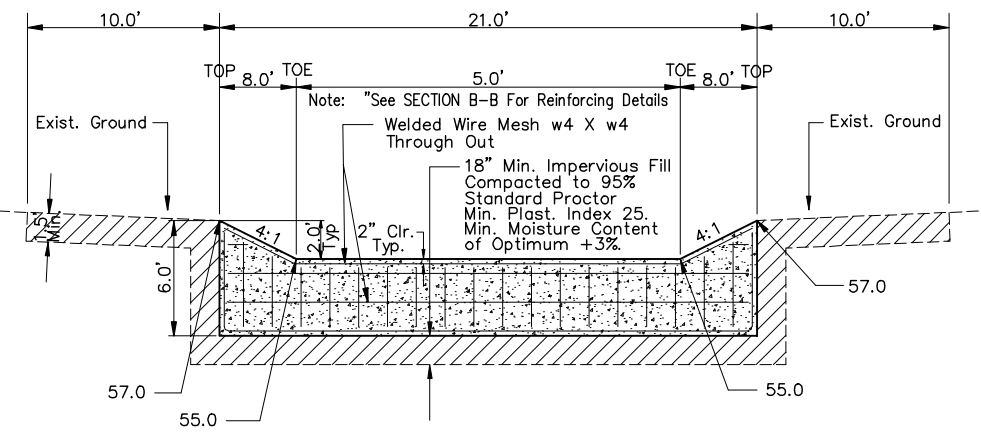


TYPICAL POND GRADING



Place a Minimum of 18" Impervious Soil Compacted to 95% (Standard Proctor) With a Minimum Moisture Content of Optimum +3% and a Minimum Plasticity Index of 25.

SECTION B-B
No Scale



SECTION A-A
No Scale

- NOTE:
1. All Concrete to be 4,000 P.S.I. Structural Mix.
 2. All Exposed Concrete Edges to Have 3/4" - 45° Chamfer.
 3. All Exposed Concrete Surfaces to be Broomed.
 4. Use W4 X W4 Welded Wire Fabric for Reinforcement
 5. Minimum Overlap of Reinforcing Steel Shall be 24 Inches.

Revision	
By	Approved
Date	
No.	

NORTHWEST METHODIST ADDITION
STORM SEWER IMPROVEMENTS
GRADING PLAN
CITY OF WICHITA, KANSAS
JIM ARMOUR P.E. - CITY ENGINEER
1725 FPS (607861)

POE & ASSOCIATES, INC.
CONSULTING ENGINEERS
5940 E. Central, Suite 200 • Wichita, KS 67208-0202
Phone 316/685-4114 • FAX 316/685-4444

Designed By: T. Austin/S. Schmidt
Drawn By: A. Moss
Poe Job No.: 874\Bbase.dwg
Date: 11/21/2006

FINAL

Sheet
8 of 10