

OAK CREEK 2ND

AN ADDITION TO WICHITA, SEDGWICK COUNTY, KANSAS
DRAINAGE PLAN

REVISED 4-28-2006

N.E. Cor. Sec. 9
T27S, R2E
Found Chiseled "4"
in Concrete

N.W. Cor. NE1/4
Sec. 9, T27S, R2E
Found #5 Bar w/ MKEC Cap

BENCHMARKS:

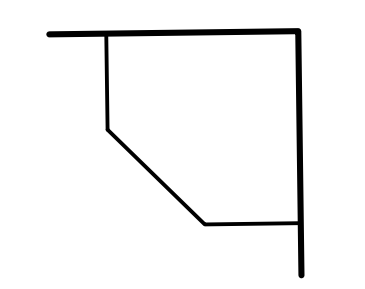
- BM #205 (Datum)
COW brass disc in NW corner of railroad signal base, W side of
Greenwich Road, 1/2 mile S of 21st Street North.
Elev. = 1370.59 N.G.V.D.
163.19 City Datum
- BM #206
"T" Post 5' W of N gate post to field entrance, W side of
Greenwich Road, 700' ± N of railroad tracks and 500' ± S of
RCB culvert.
Elev. = 1365.87 N.G.V.D.
178.47 City Datum
- BM #207
Chiseled "4" on top of concrete headwall on NW corner of RCB
under Greenwich Road, 1100' ± S of 21st Street North.
Elev. = 1360.065 N.G.V.D.
172.665 City Datum
- BM #208
Railroad spike in W face of 20' Elm on E right of way line of
Greenwich Road 800' ± S of 21st Street North.
Elev. = 1367.70 N.G.V.D.
180.30 City Datum
- BM #209
Chiseled "4" on NW corner of traffic signal base, at SW corner
of Greenwich Road & 21st Street North.
Elev. = 1363.54 N.G.V.D.
176.14 City Datum
- BM #215
Chiseled "4" in top center curb inlet 600' W of Greenwich Road
on S side of 21st Street North.
Elev. = 1363.265 N.G.V.D.
175.865 City Datum
- BM #216
Chiseled "4" on S end of curb & gutter at E of Median,
Greenwich Road on N side of 21st Street North 1400' ± W of
Greenwich Road.
Elev. = 1364.55 N.G.V.D.
177.15 City Datum

SCALE: 1" = 100'

LEGEND

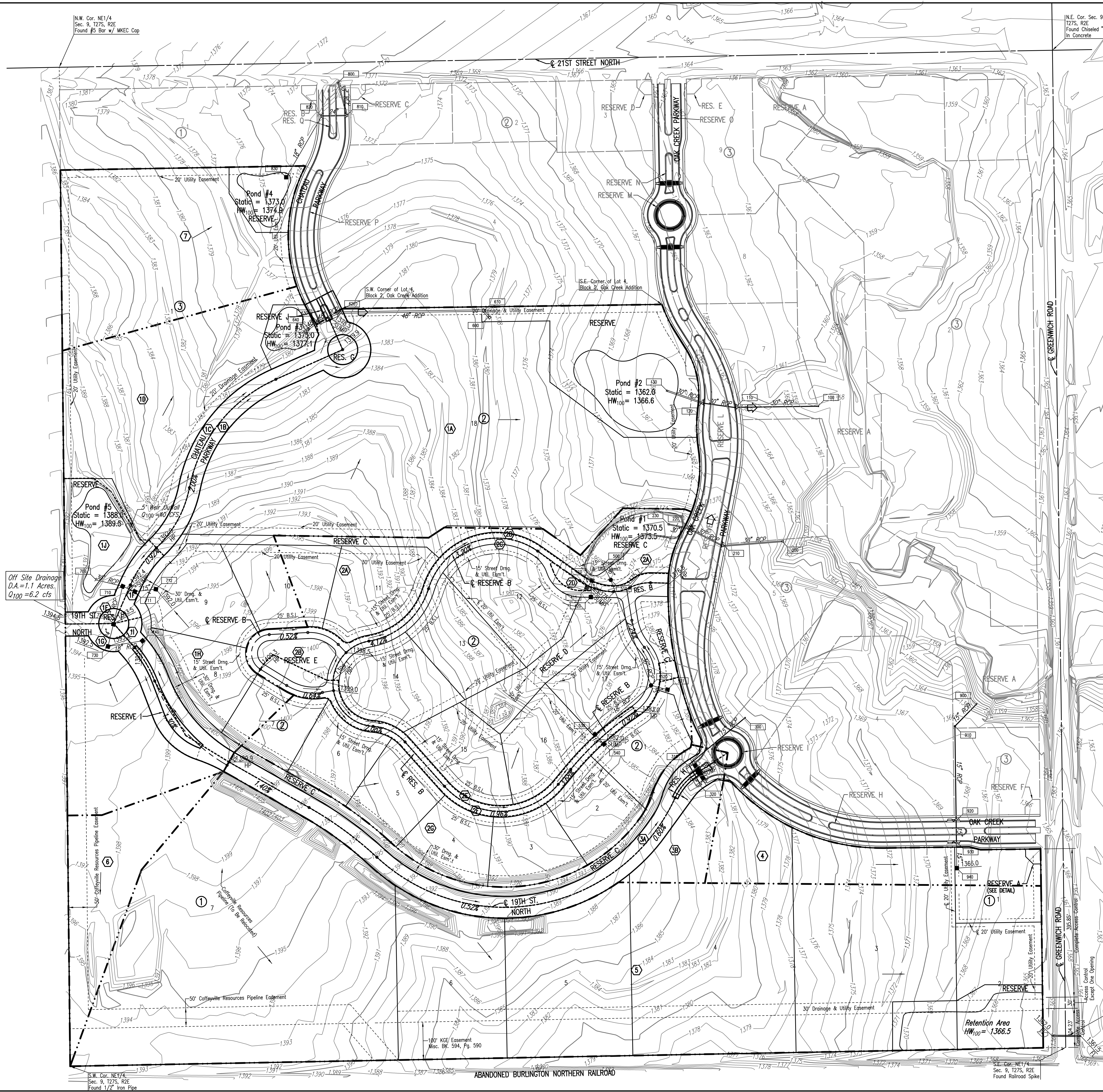
- (3A) BASIN IDENTIFIER
 - - - - - MINOR BASIN BOUNDARY
 - - - - - MAJOR BASIN BOUNDARY
 - EMERGENCY STORM WATER FLOW
 - STORM WATER FLOW
 - NODE IDENTIFIER
 - STORM SEWER AND INLET
 - STORM SEWER AND MANHOLE
- SEE SUPPORTING CALCULATIONS FOR HYDROLOGY

RESERVE A DETAIL

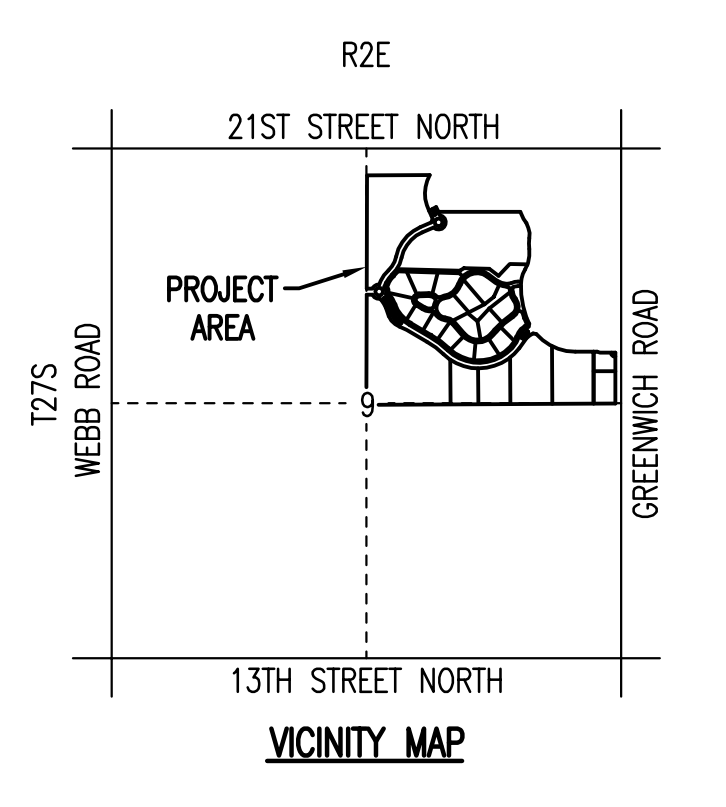


MINIMUM PADS

BLOCK 1:	LOTS 1-3	1369.5
BLOCK 2:	LOT 1	1383.2
	LOT 9	1394.6
	LOTS 12 & 17	1360.5
	LOT 18	1369.6
BLOCK 3:	LOT 1	1380.1



Existing 36" CMP
Under Greenwich



Date: 04/28/06 08:54 AM by: BMM
 Drawn: 11/05/05-01-2006 10:37 AM by: BMM
 Project: 05311 DRAINAGE - R2E

S.W. Cor. NE1/4, Sec. 9, T27S, R2E, Found 1/2" Iron Pipe
 S.W. Cor. NE1/4, Sec. 9, T27S, R2E, Found Railroad Spike