

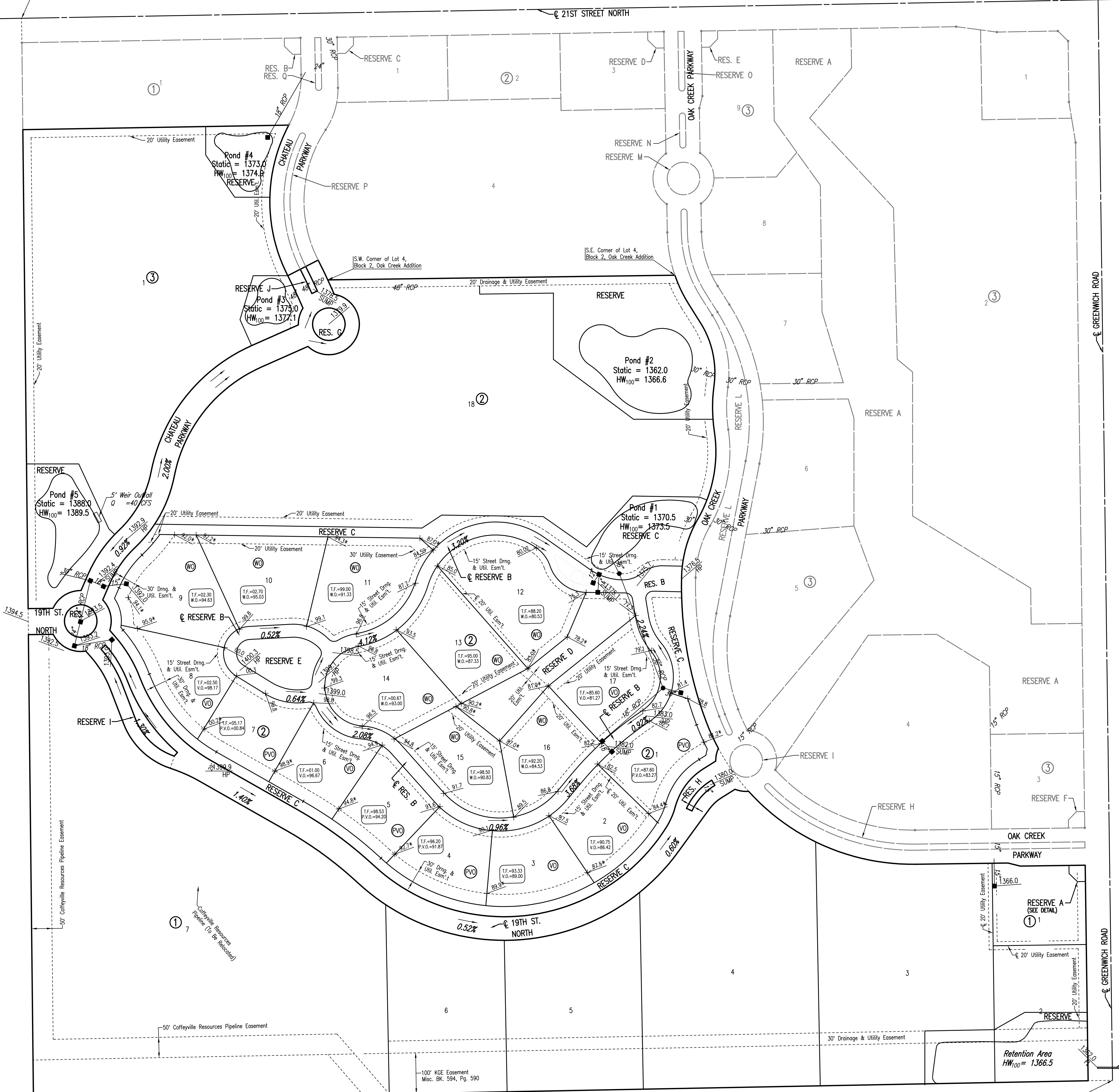
N.W. Cor. NE1/4
 Sec. 9, T27S, R2E
 Found #5 Bar w/ MKEC Cap

N.E. Cor. Sec. 9
 T27S, R2E
 Found Chiseled "+"
 in Concrete

OAK CREEK 2ND

AN ADDITION TO WICHITA, SEDGWICK COUNTY, KANSAS
 FOUR-CORNER PLAN

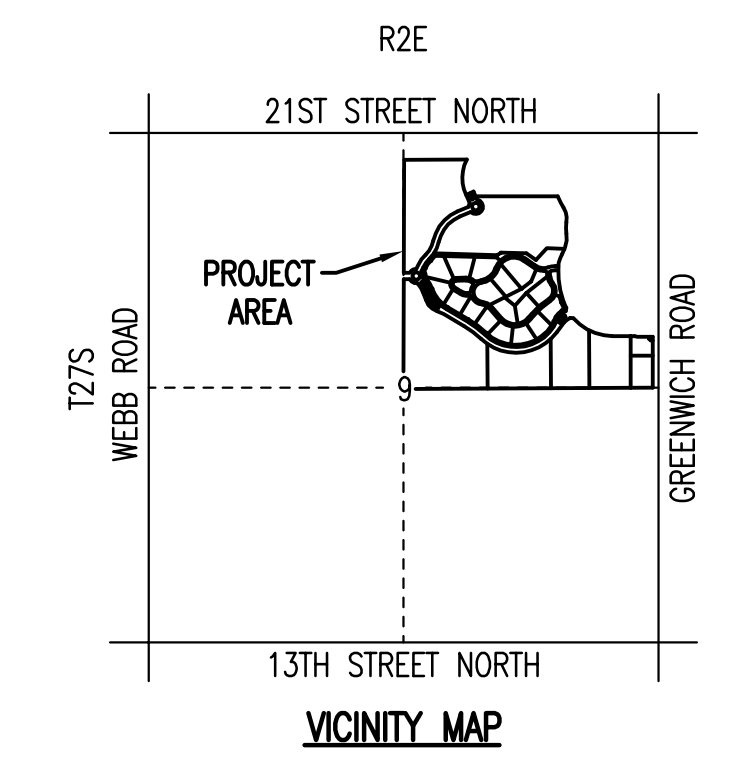
REVISED 4-28-2006



- BENCHMARKS:**
- BM #205 (Datum)
 COW brass disc in NW corner of railroad signal base, W side of Greenwich Road, 1/2 mile S of 21st Street North.
 Elev. = 1370.59 N.G.V.D.
 = 183.19 City Datum
 - BM #206
 "T" Post 5' W of N gate post to field entrance, W side of Greenwich Road, 700' ± N of railroad tracks and 500' ± S of RCB culvert.
 Elev. = 1365.87 N.G.V.D.
 = 178.47 City Datum
 - BM #207
 Chiseled "f" on top of concrete headwall on NW corner of RCB under Greenwich Road, 1100' ± S of 21st Street North.
 Elev. = 1360.065 N.G.V.D.
 = 172.665 City Datum
 - BM #208
 Railroad spike in W face of 20" Elm on E right of way line of Greenwich Road 800' ± S of 21st Street North.
 Elev. = 1367.70 N.G.V.D.
 = 180.30 City Datum
 - BM #209
 Chiseled "f" on NW corner of traffic signal base, at SW corner of Greenwich Road & 21st Street North.
 Elev. = 1363.54 N.G.V.D.
 = 176.14 City Datum
 - BM #215
 Chiseled "+" in top center curb inlet 600' W of Greenwich Road on S side of 21st Street North.
 Elev. = 1363.265 N.G.V.D.
 = 175.865 City Datum
 - BM #216
 Chiseled "f" on S end of curb & gutter at E of Median, Target entrance on N side of 21st Street North 1400' ± W of Greenwich Road.
 Elev. = 1364.55 N.G.V.D.
 = 177.15 City Datum

- LEGEND**
- SPOT ELEVATION
 - HIGH POINT ELEVATION
 - MATCH EXISTING ELEVATION
 - STORM SEWER AND INLET
 - STORM SEWER AND MANHOLE
 - VIEW-OUT BASEMENT
 - WALK-OUT BASEMENT
 - POSSIBLE VIEW-OUT
- ADD 1300 TO ELEVATIONS FOR CITY DATUM.

MINIMUM PADS	
BLOCK 1:	
LOTS 1-3	1369.5
BLOCK 2:	
LOT 1	1383.2
LOT 9	1394.6
LOTS 12 & 17	1380.5
LOT 18	1369.6
BLOCK 3:	
LOT 1	1380.1



Existing 36" CMP Under Greenwich

Sheet 05-01-2006 01:00 AM by BMM
 PWA Scale: 1:100 05-01-2006 1:10:17 PM by BMM
 03/2005/05/01/1/000000/REVISED