

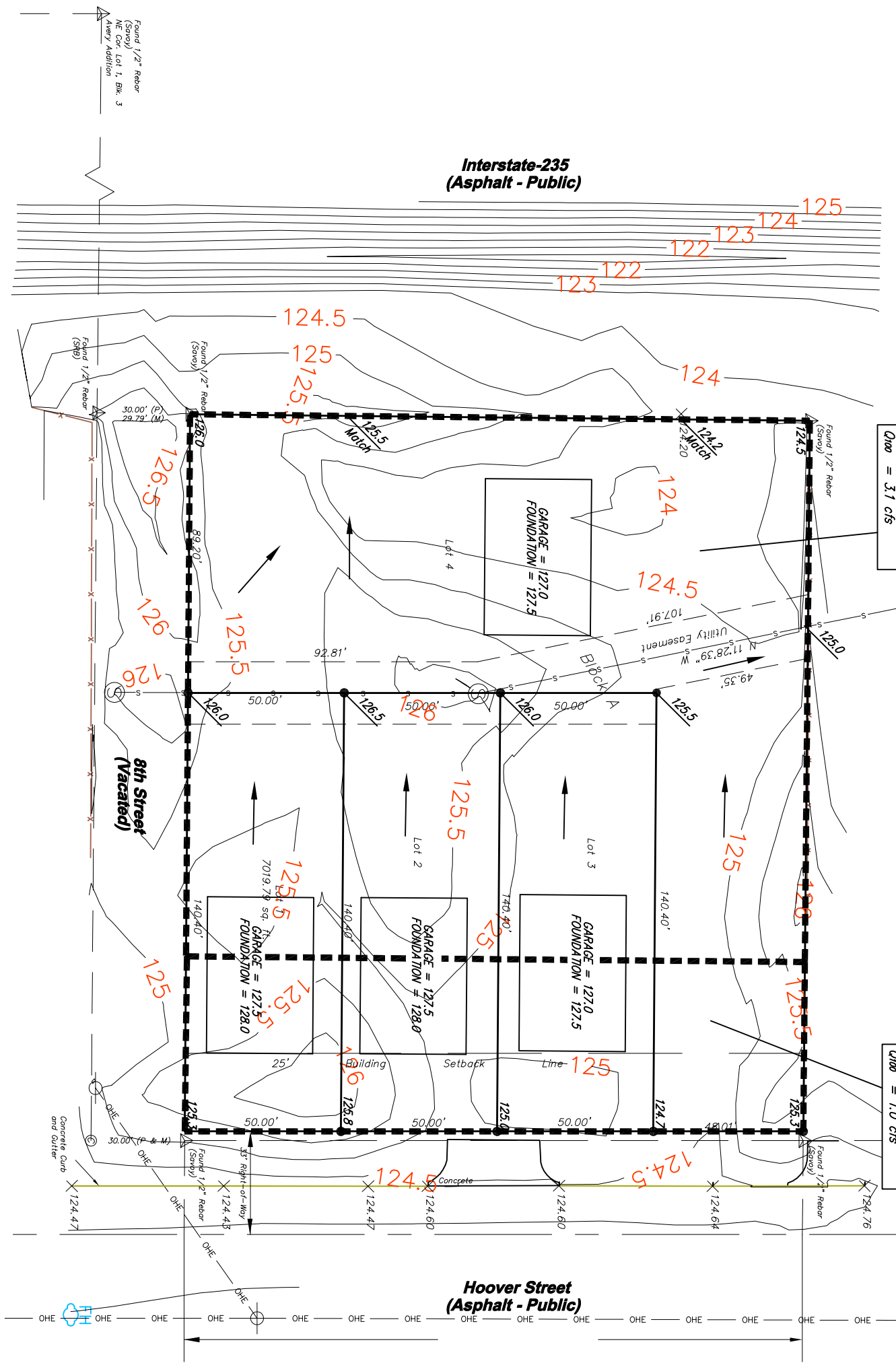
# Drainage Plan

## OLIVIA'S 1ST ADDITION

Wichita, Sedgwick County, Kansas

**West Basin:**  
 Area = 0.80 acres  
 $I_2 = 3.83$  in/hr  
 $I_{100} = 7.37$  in/hr  
 $C_2 = 0.39$   
 $C_{100} = 0.52$   
 $Q_2 = 1.2$  cfs  
 $Q_{100} = 3.1$  cfs

**East Basin:**  
 Area = 0.25 acres  
 $I_2 = 3.83$  in/hr  
 $I_{100} = 7.37$  in/hr  
 $C_2 = 0.39$   
 $C_{100} = 0.52$   
 $Q_2 = 0.4$  cfs  
 $Q_{100} = 1.0$  cfs



Prepared for:  
 Benchmark Land Surveying

OLIVIA'S 1ST ADDITION  
 DRAINAGE PLAN  
 WICHITA, KANSAS

	<b>Ruggles &amp; Bohm, P.A.</b> Engineering, Surveying, Land Planning	
	924 North Main Wichita, Kansas 67203 www.rbkansas.com	(316) 264-8008 (316) 264-4621 fax E-mail: rfb@rbkansas.com
PROJECT NUMBER <b>Bose #MOOREJ</b>	DATE <b>July 20, 2006</b>	SHEET <b>1</b> of <b>1</b>