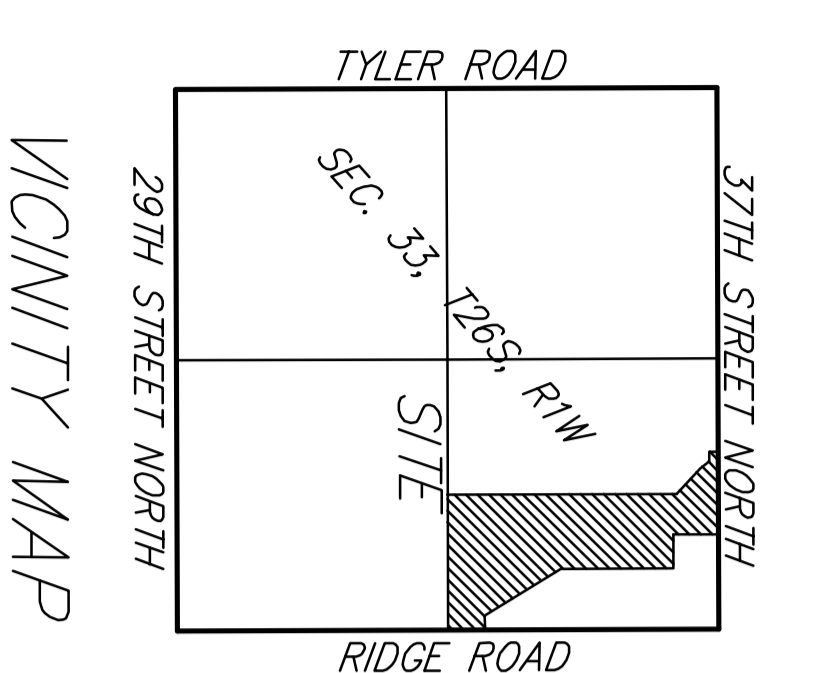
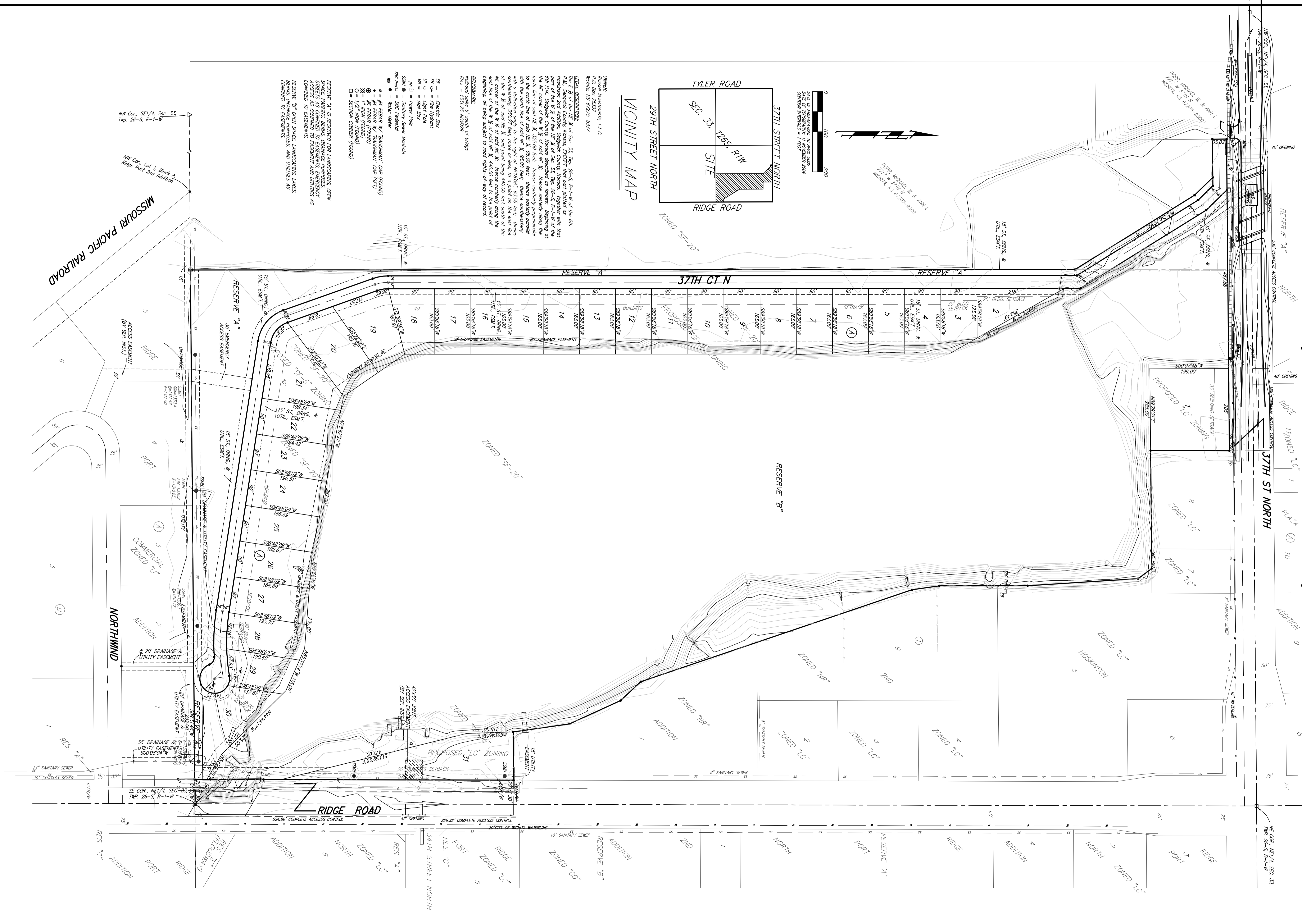


REVISED PRELIMINARY PLAT
PIER 37 ADDITION
 WICHITA, SEDGWICK COUNTY, KANSAS



OWNER:
 Russell Investments, LLC
 P.O. Box 73337
 Wichita, KS 67275-5337

LEGAL DESCRIPTION:
 The E 1/2 of the NE 1/4 of Sec. 33, Twp. 26-S, R-1-W of the 6th P.M., Sedgewick County, Kansas, EXCEPT that part indicated as part of the W 1/2 of the NE 1/4 of Sec. 33, Twp. 26-S, R-1-W of the 6th P.M., Sedgewick County, Kansas described as follows: Beginning at the NE corner of said NE 1/4, 325.00 feet, thence westerly perpendicular to the north line of said NE 1/4, 95.00 feet, thence southerly parallel with the north line of said NE 1/4, 95.00 feet, thence easterly parallel with a deflection angle to the right of 49.1808°, 63.55 feet, thence southerly, 350.27 feet, more or less, to a point on the east line of the W 1/2 of said NE 1/4, said point being 440.00 feet south of the NE corner of the W 1/2 of said NE 1/4, thence westerly along the north line of the W 1/2 of said NE 1/4, 440.00 feet to the beginning, all being subject to road rights-of-way of record.

BEZELMARKERS: 5" south of bridge
 Elev. = 1311.25 MGD029

- = Electric Box
 - FI-O = Fire Hydrant
 - LP-O = Light Pole
 - MB = Mail Box
 - PP-O = Power Pole
 - SSM-O = Sanitary Sewer Manhole
 - SSM-Red = SCS Manhole
 - NW = Water Meter
 - A = 4" REBAR W/ "BULLDOGMAN" CAP (FOUND)
 - ⊙ = 6" REBAR (FOUND)
 - ⊙ = 8" REBAR (FOUND)
 - ⊙ = 12" REBAR (FOUND)
 - ⊙ = SECTION CORNER (FOUND)
- RESERVE "A" IS RESERVED FOR LANDSCAPING, OPEN SPACE, PARKING, BENCHES, DRAINAGE PURPOSES. STREETS AS CONVENED TO EASEMENTS, EMERGENCY ACCESS AS CONVENED TO EASEMENTS AND UTILITIES AS CONVENED TO EASEMENTS.
- RESERVE "B" OPEN SPACE, LANDSCAPING, LAKES, BENCHES, DRAINAGE PURPOSES, AND UTILITIES AS CONVENED TO EASEMENTS.