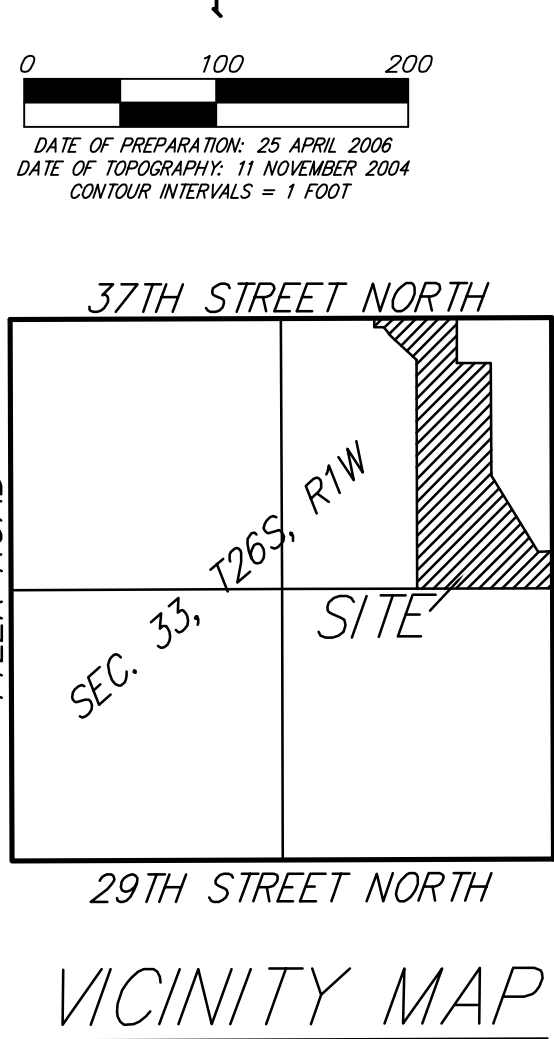
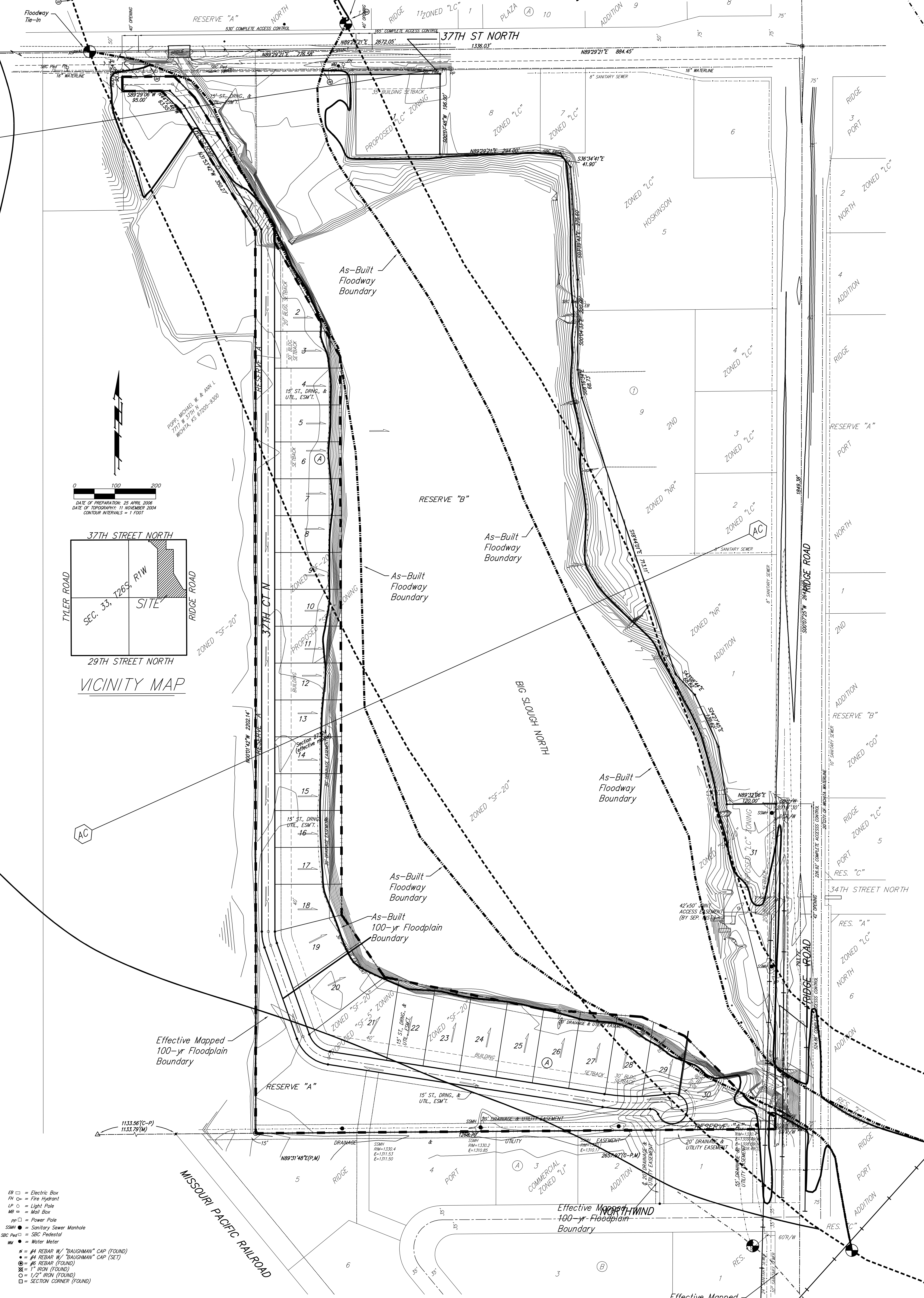


REVISED DRAINAGE CONCEPT
PIER 37 ADDITION
WICHITA, SEDGWICK COUNTY, KANSAS



DATE OF PREPARATION: 23 APRIL 2006
 DATE OF TOPOGRAPHY: 11 NOVEMBER 2004
 CONTOUR INTERVALS = 1 FOOT



- EB □ = Electric Box
- FH ○ = Fire Hydrant
- LP ○ = Light Pole
- MB □ = Mail Box
- pp □ = Power Pole
- SSMH ● = Sanitary Sewer Manhole
- SBC Ped □ = SBC Pedestal
- WM ● = Water Meter
- # = #4 REBAR W/ "BAUGHMAN" CAP (FOUND)
- = #4 REBAR W/ "BAUGHMAN" CAP (SET)
- ⊙ = #6 REBAR (FOUND)
- ⊗ = 1" IRON (FOUND)
- = 1/2" IRON (FOUND)
- = SECTION CORNER (FOUND)

RESERVE "A" IS RESERVED FOR LANDSCAPING, OPEN SPACE, PARKING, BERMS, DRAINAGE PURPOSES. STREETS AS CONFINED TO EASEMENTS, EMERGENCY ACCESS AS CONFINED TO EASEMENTS AND UTILITIES AS CONFINED TO EASEMENTS.

RESERVE "B" OPEN SPACE, LANDSCAPING, LAKES, BERMS, DRAINAGE PURPOSES, AND UTILITIES AS CONFINED TO EASEMENTS.

Area = 17.5 acres	Developed 'C' = 0.70 Q ₁₀₀ = 90 cfs	Existing 'C' = 0.70 Q ₁₀₀ = 90 cfs
-------------------	--	---