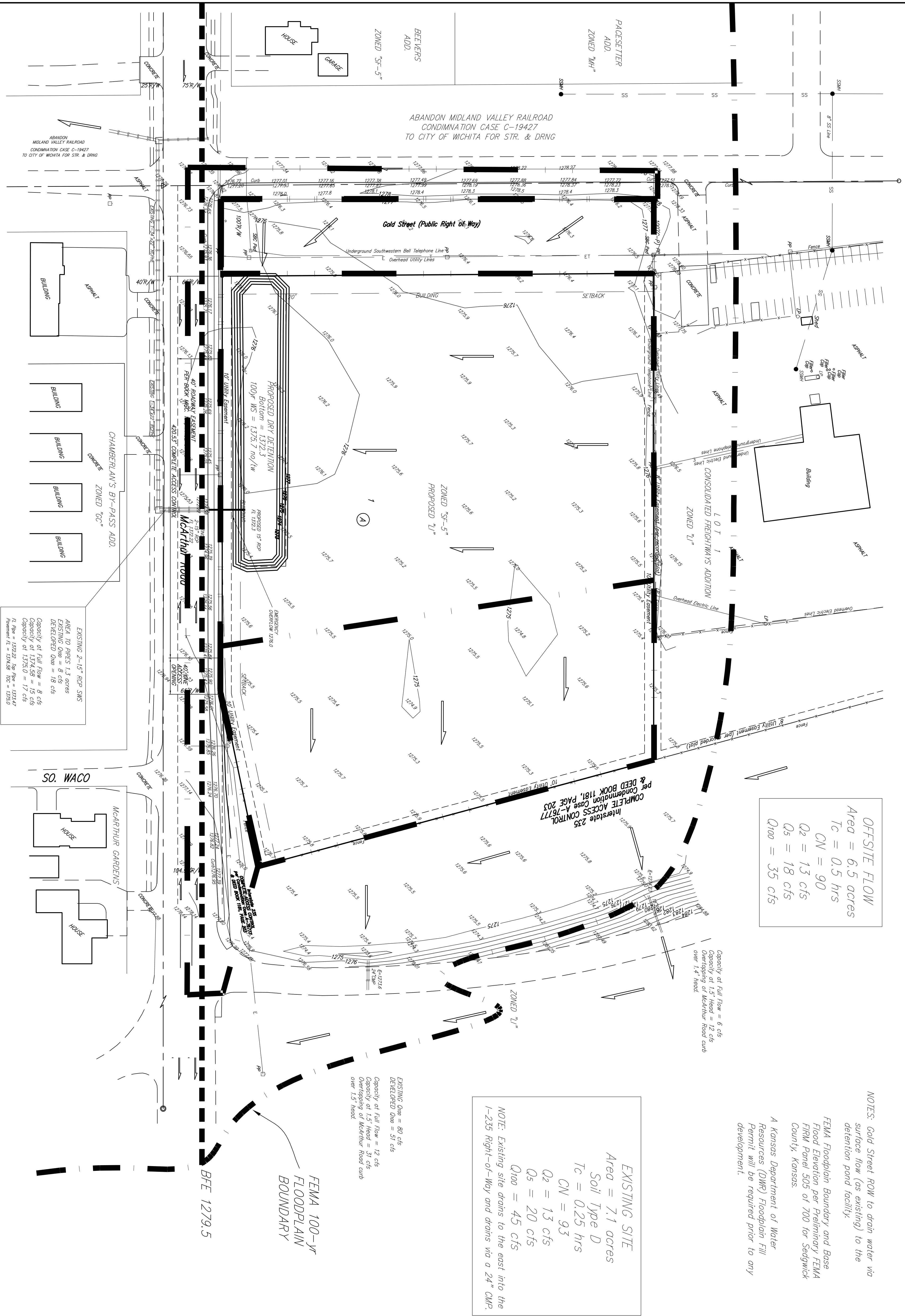


PRICE TRANSPORTATION ADDITION WICHITA, SEDGWICK COUNTY, KANSAS

DRAINAGE PLAN



OFFSITE FLOW
 Area = 6.5 acres
 $T_c = 0.5$ hrs
 $CN = 90$
 $Q_2 = 1.3$ cfs
 $Q_5 = 18$ cfs
 $Q_{100} = 35$ cfs

NOTES: Gold Street ROW to drain water via surface flow (as existing) to the detention pond facility.
 FEMA Floodplain Boundary and Base Flood Elevation per Preliminary FEMA FIRM Panel 505 of 700 for Sedgwick County, Kansas.
 A Kansas Department of Water Resources (DWR) Floodplain Fill Permit will be required prior to any development.

EXISTING SITE
 Area = 7.1 acres
 Soil Type D
 $T_c = 0.25$ hrs
 $CN = 93$
 $Q_2 = 13$ cfs
 $Q_5 = 20$ cfs
 $Q_{100} = 45$ cfs
 NOTE: Existing site drains to the east into the I-235 Right-of-Way and drains via a 24" CMP.

GOLD STREET ROW
 Area = 0.9 acres
 Soil Type D
 $T_c = 0.25$ hrs
 $CN = 80$
 $Q_2 = 1.5$ cfs
 $Q_5 = 2.4$ cfs
 $Q_{100} = 5.6$ cfs

DEVELOPED CENTER PORTION
 Area = 4.0 acres
 Soil Type D
 $T_c = 0.25$ hrs
 $CN = 93$
 $Q_2 = 13$ cfs
 $Q_5 = 17$ cfs
 $Q_{100} = 31$ cfs

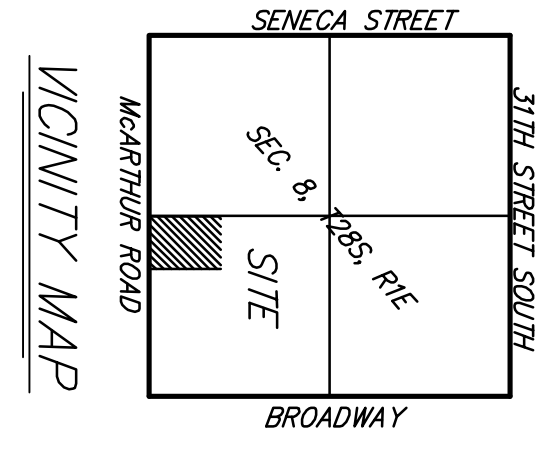
DEVELOPED EAST PORTION
 Area = 2.4 acres
 Soil Type D
 $T_c = 0.25$ hrs
 $CN = 93$
 $Q_2 = 6.6$ cfs
 $Q_5 = 8.9$ cfs
 $Q_{100} = 16$ cfs

EXISTING 2-15" RCP SWS
 AREA TO PIECES 1.3 acres
 EXISTING OWS = 8 cfs
 DEVELOPED OWS = 18 cfs
 Capacity at Full Flow = 8 cfs
 Capacity at 1.5' Head = 15 cfs
 R_1 Flow = 13222 Imp Pcp = 13147
 R_2 Flow = 12749 Imp Pcp = 12550

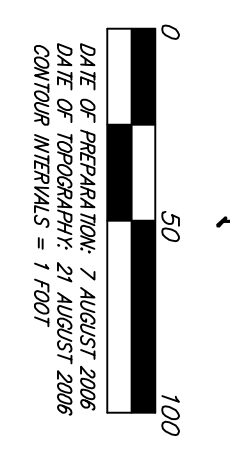
EXISTING OWS = 80 cfs
 DEVELOPED OWS = 51 cfs
 Capacity at Full Flow = 12 cfs
 Capacity at 1.5' Head = 31 cfs
 Overlapping of McArthur Road curb over 1.5' head.

FEMA 100-yr FLOODPLAIN BOUNDARY

BFE 1279.5



- OWNER: TRANSPORTATION, LLC
 3402 W. 46th St.
 WICHITA, KS 67213
- Guy = Guy Anchor
 HLP = High Line Pole
 LP = Light Pole
 SPC Pedest = SPC Pedest
 PP = Power Pole
 SSWH = Sanitary Sewer Manhole



DATE OF PREPARATION: 7 AUGUST 2008
 DATE OF REVISION: 21 AUGUST 2008
 CADWATER WORKSHEET: 17/001