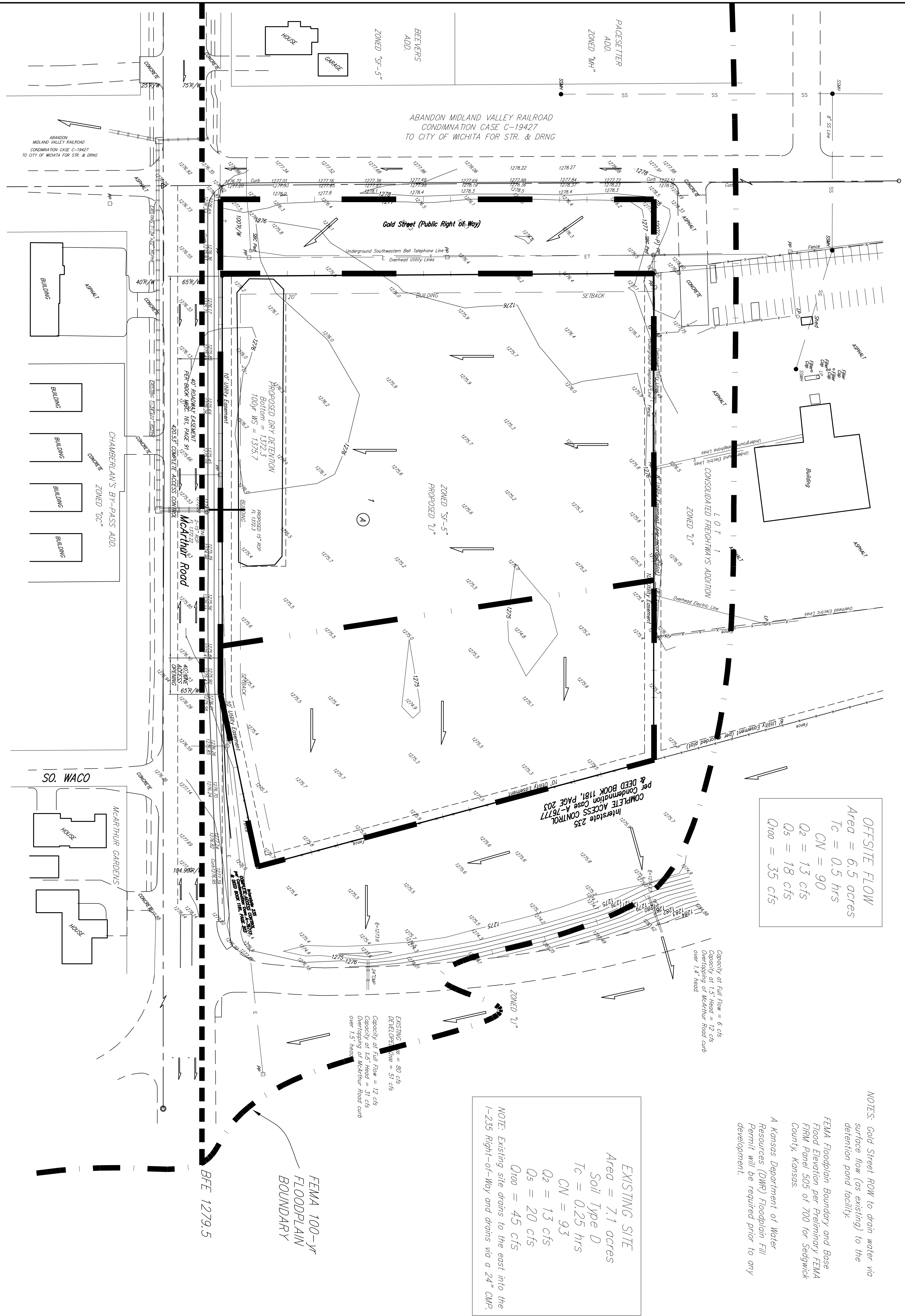


# DRAINAGE PLAN PRICE TRANSPORTATION ADDITION WICHITA, SEDGWICK COUNTY, KANSAS



**OFFSITE FLOW**  
 Area = 6.5 acres  
 $T_c = 0.5$  hrs  
 $CN = 90$   
 $Q_2 = 1.3$  cfs  
 $Q_5 = 18$  cfs  
 $Q_{100} = 35$  cfs

**NOTES:** Gold Street ROW to drain water via surface flow (as existing) to the detention pond facility.  
 FEMA Floodplain Boundary and Base Flood Elevation per Preliminary FEMA FIRM Panel 505 of 700 for Sedgwick County, Kansas.  
 A Kansas Department of Water Resources (DWR) Floodplain Fill Permit will be required prior to any development.

**EXISTING SITE**  
 Area = 7.1 acres  
 Soil Type D  
 $T_c = 0.25$  hrs  
 $CN = 93$   
 $Q_2 = 13$  cfs  
 $Q_5 = 20$  cfs  
 $Q_{100} = 45$  cfs  
 NOTE: Existing site drains to the east into the I-235 Right-of-Way and drains via a 24" CMP.

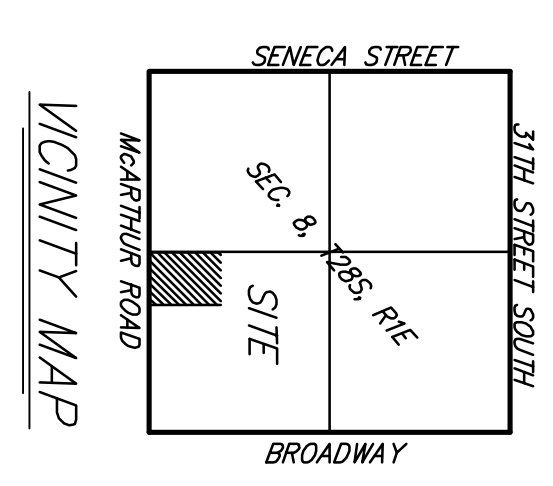
**GOLD STREET ROW**  
 Area = 0.9 acres  
 Soil Type D  
 $T_c = 0.25$  hrs  
 $CN = 80$   
 $Q_2 = 1.5$  cfs  
 $Q_5 = 2.4$  cfs  
 $Q_{100} = 5.6$  cfs

**DEVELOPED CENTER PORTION**  
 Area = 4.0 acres  
 Soil Type D  
 $T_c = 0.25$  hrs  
 $CN = 93$   
 $Q_2 = 13$  cfs  
 $Q_5 = 17$  cfs  
 $Q_{100} = 31$  cfs

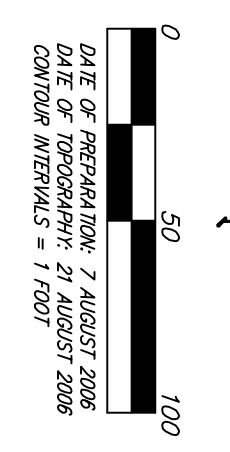
**DEVELOPED EAST PORTION**  
 Area = 2.4 acres  
 Soil Type D  
 $T_c = 0.25$  hrs  
 $CN = 93$   
 $Q_2 = 6.6$  cfs  
 $Q_5 = 8.9$  cfs  
 $Q_{100} = 16$  cfs

FEMA 100-yr FLOODPLAIN BOUNDARY

BFE 1279.5



- OWNER:** TRANSPORTATION, LLC  
**APR. 20** 2008  
**3402 W. WABBY**  
**WICHITA, KS 67213**
- (---) Guy = Guy Anchor  
 (---) HLP = High Line Pole  
 (---) LP = Light Pole  
 (---) SPC = SPC Pedestal  
 (---) PP = Power Pole  
 (---) SSWH = Sanitary Sewer Manhole



DATE OF PREPARATION: 7 AUGUST 2008  
 DATE OF REVISION: 21 AUGUST 2008  
 CONSULTING ENGINEER: 1/15001