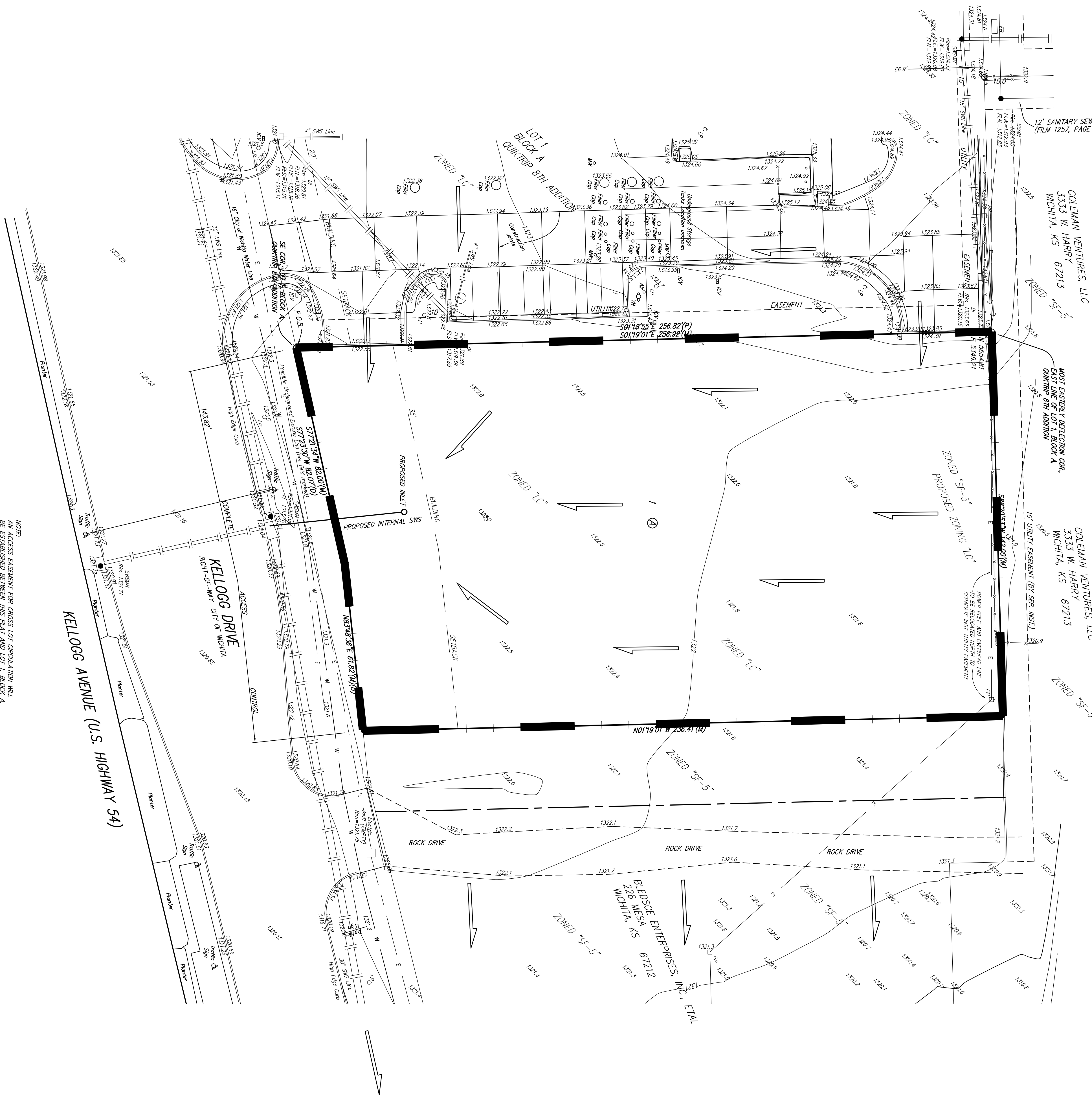


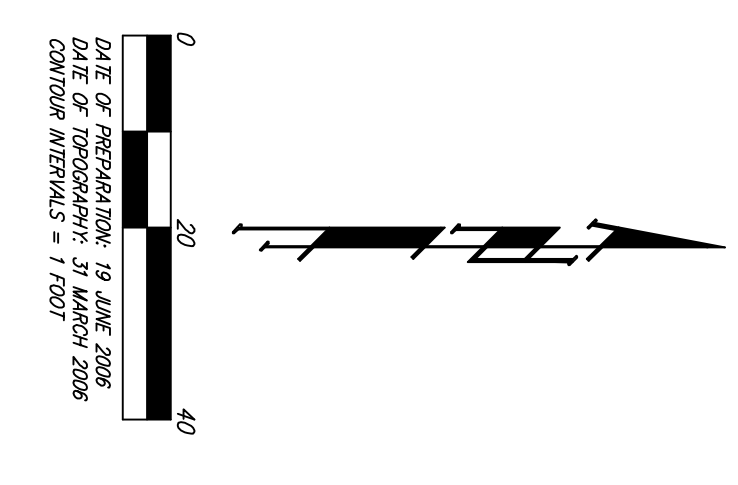
DRAINAGE PLAN

QUIKTRIP 10TH ADDITION

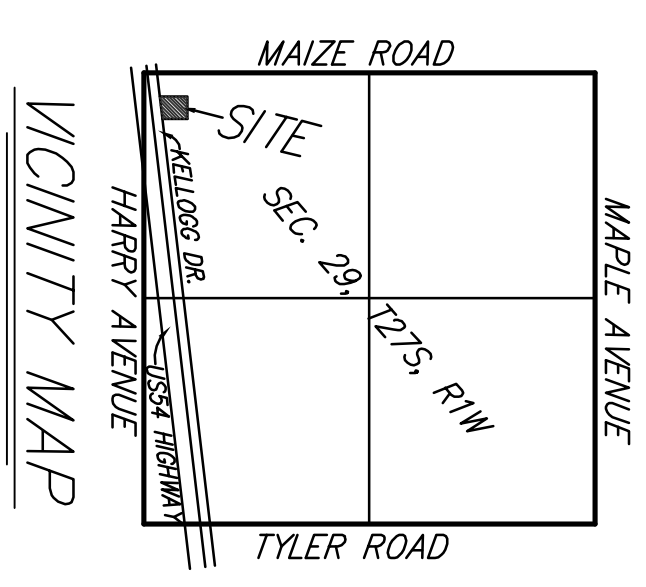
WICHITA, SEDGWICK COUNTY, KANSAS



NOTE:
AN ACCESS EASEMENT FOR CROSS LOT CIRCULATION WILL
BE ESTABLISHED BETWEEN THIS PLOT AND LOT 1, BLOCK A,
QUIKTRIP 9TH ADDITION.



BENCHMARK:
CITY OF WICHITA BENCHMARK 05C2 AT NE
CORNER OF INTERSECTION OF CENTER OF
CORNER BAZE FOR RAMPED SIGNAL LIGHT
ELEV. = 1323.97 MGD0239



NOTE: UPON DEVELOPMENT, ALL SITE RUNOFF
SHALL BE DIRECTED TO THE SOUTH PORTION
OF THE LOT VIA AN INTERNAL STORM WATER
SEWER SYSTEM. THIS SYSTEM SHOULD THEN
DRAIN INTO THE EXISTING STORM SEWER
SYSTEM IN KELLOGG DRIVE, AS SHOWN.

DEVELOPED CONDITIONS
Area = 0.8 acres
 $C' = 0.90$
 $T_c = 15 \text{ min}$
 $Q_2 = 2.8 \text{ cfs}$
 $Q_5 = 3.3 \text{ cfs}$
 $Q_{100} = 5.3 \text{ cfs}$

EXISTING CONDITIONS
Area = 0.8 acres
 $C' = 0.60$
 $T_c = 15 \text{ min}$
 $Q_2 = 1.8 \text{ cfs}$
 $Q_5 = 2.2 \text{ cfs}$
 $Q_{100} = 3.5 \text{ cfs}$

NO FEMA 100-yr FLOODPLAIN OR
FLOODWAY EXISTS ON THIS PROPERTY. A
FEMA FLOODPLAIN EXHIBIT HAS BEEN
PROVIDED TO THE CITY OF WICHITA'S
STORMWATER MANAGEMENT ENGINEER.