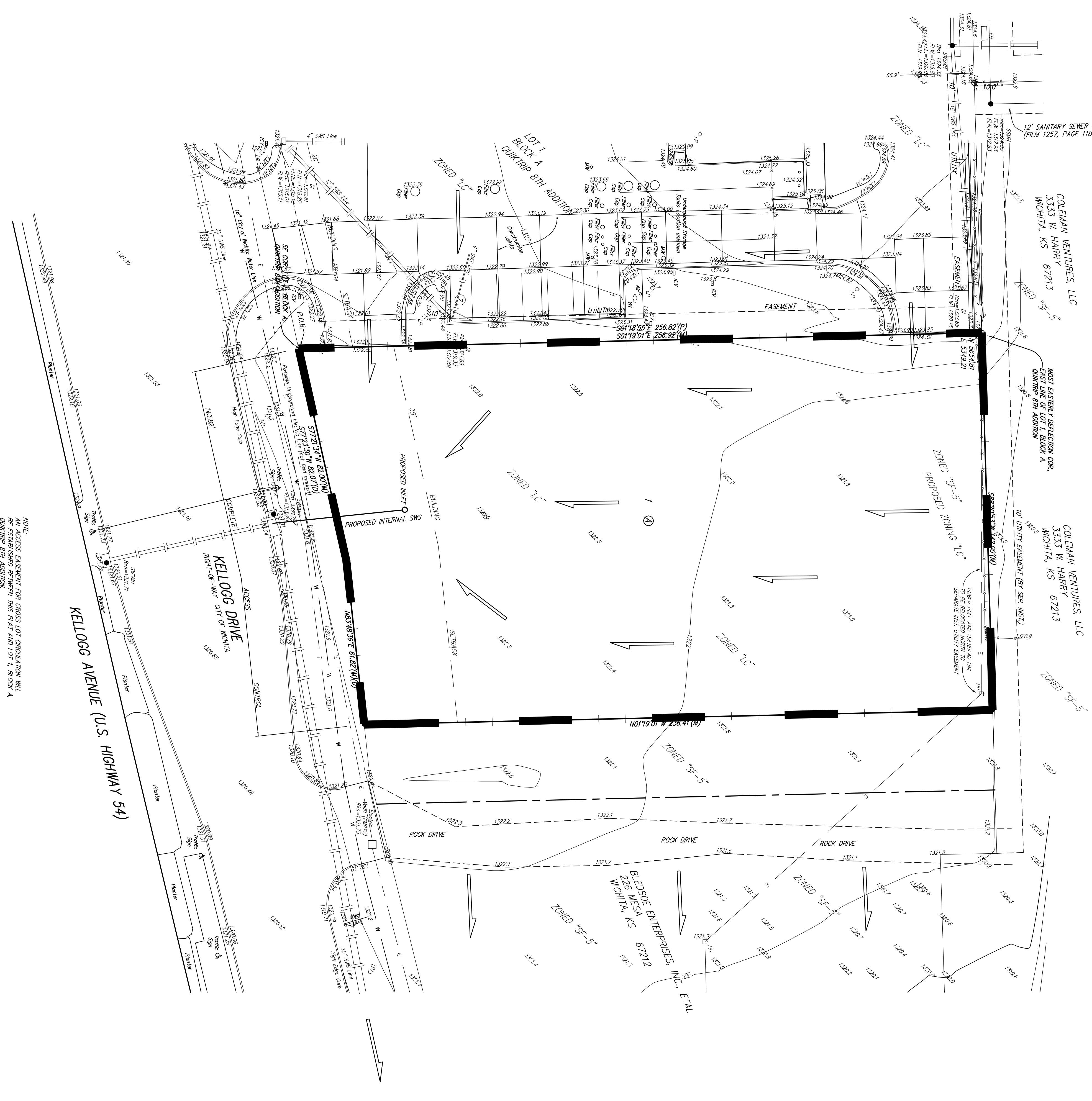


# DRAINAGE PLAN

## QUIKTRIP 10TH ADDITION

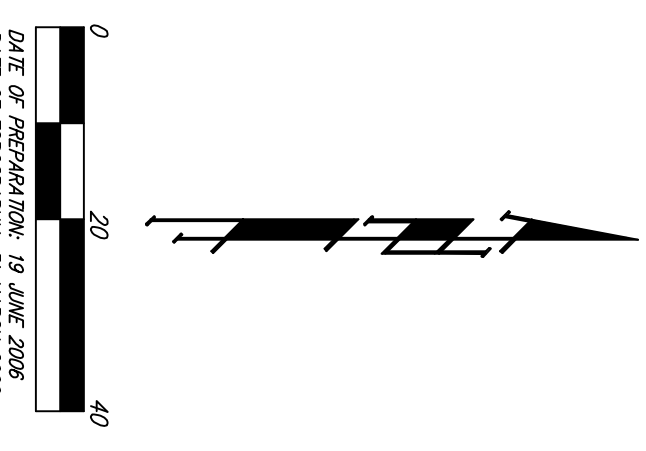
### WICHITA, SEDGWICK COUNTY, KANSAS



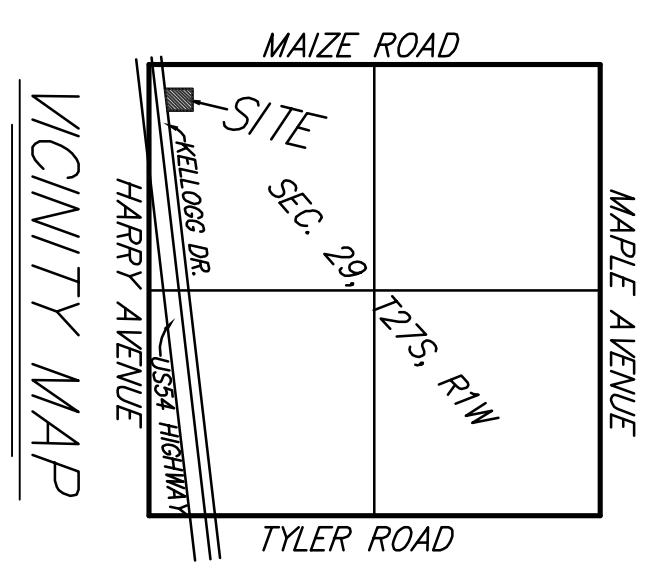
NOTE: ALL ACCESS EASEMENT FOR CROSS LOT CIRCULATION WILL BE PROVIDED BY THE CITY OF WICHITA FOR THIS PLAN AND LOT 1, BLOCK A, QUIKTRIP 8TH ADDITION.

COLEMAN VENTURES, LLC  
 3333 W. HARRY  
 WICHITA, KS 67213

COLEMAN VENTURES, LLC  
 3333 W. HARRY  
 WICHITA, KS 67213



BENCHMARK:  
 CITY OF WICHITA BENCHMARK DISC AT NE CORNER OF CONCRETE BASE FOR TRAFFIC SIGNAL LIGHT  
 DATE OF ESTABLISHMENT: 19 JUNE 2006  
 DATE OF REEVALUATION: 31 MARCH 2008  
 CONTOUR INTERVALS = 1 FOOT  
 ELEV. = 1323.97 MGD029



NOTE: UPON DEVELOPMENT, ALL SITE RUNOFF SHALL BE DIRECTED TO THE SOUTH PORTION OF THE LOT VIA AN INTERNAL STORM WATER SETWER SYSTEM. THIS SYSTEM SHOULD THEN DRAIN INTO THE EXISTING STORM SEWER SYSTEM IN KELLOGG DRIVE, AS SHOWN.

**DEVELOPED CONDITIONS**  
 Area = 0.8 acres  
 $T_c = 0.90$   
 $T_c = 15$  min  
 $Q_2 = 2.8$  cfs  
 $Q_5 = 3.3$  cfs  
 $Q_{100} = 5.3$  cfs

**EXISTING CONDITIONS**  
 Area = 0.8 acres  
 $T_c = 0.60$   
 $T_c = 15$  min  
 $Q_2 = 1.8$  cfs  
 $Q_5 = 2.2$  cfs  
 $Q_{100} = 3.5$  cfs

NO FEMA 100-yr FLOODPLAIN OR FLOODWAY EXISTS ON THIS PROPERTY. A FEMA FLOODPLAIN EXHIBIT HAS BEEN PROVIDED TO THE CITY OF WICHITA'S STORMWATER MANAGEMENT ENGINEER.