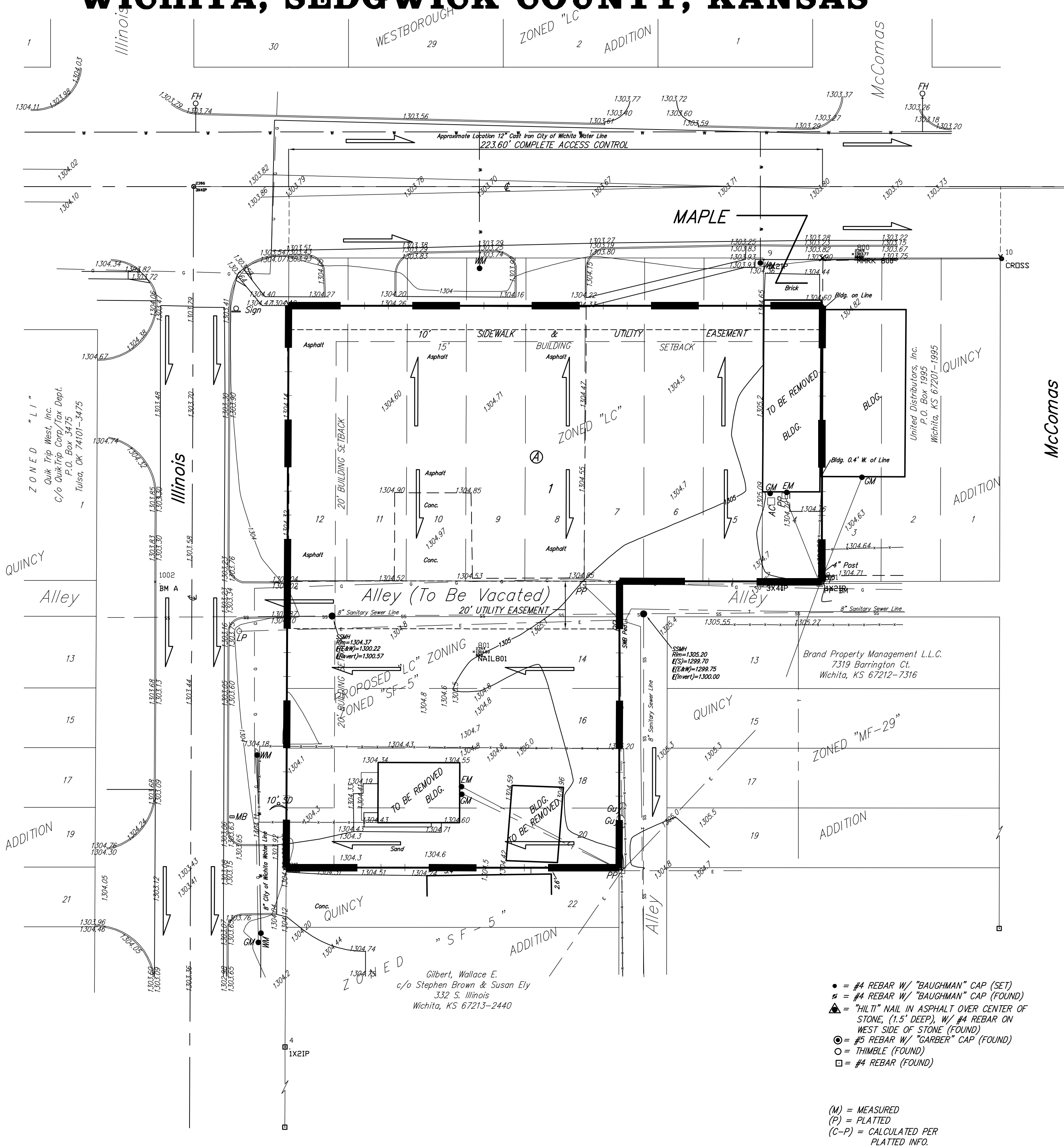
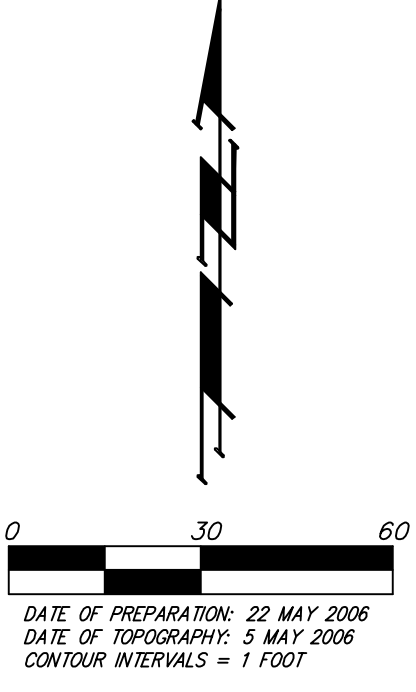


DRAINAGE PLAN

QUIKTRIP 9TH ADDITION WICHITA, SEDGWICK COUNTY, KANSAS

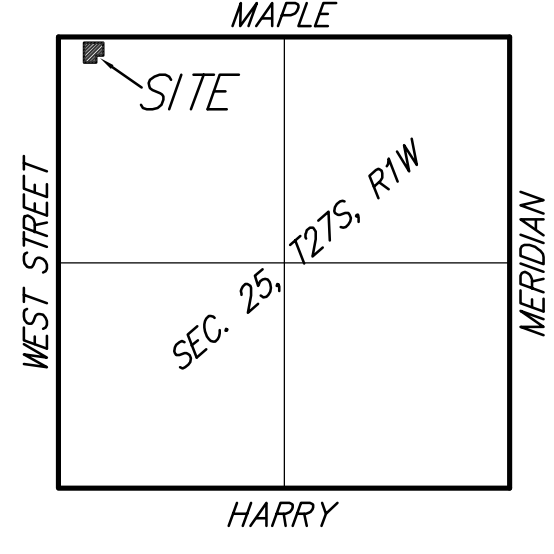


- = #4 REBAR W/ "BAUGHMAN" CAP (SET)
 - = #4 REBAR W/ "BAUGHMAN" CAP (FOUND)
 - ▲ = "HILTI" NAIL IN ASPHALT OVER CENTER OF STONE, (1.5' DEEP), W/ #4 REBAR ON WEST SIDE OF STONE (FOUND)
 - ⊙ = #5 REBAR W/ "GARBER" CAP (FOUND)
 - = THIMBLE (FOUND)
 - = #4 REBAR (FOUND)
- (M) = MEASURED
(P) = PLATTED
(C-P) = CALCULATED PER PLATTED INFO.



EXISTING = DEVELOPED
AREA = 1.0 ACRES
C' = 0.95
Q₂ = 3.7 cfs
Q₅ = 4.3 cfs
Q₁₀₀ = 7.0 cfs

NOTE: Existing Site consists of asphalt parking and various buildings (to be removed).
Developed Site will consist mainly of asphalt drive and car wash structures.



BENCHMARK:
SMALL RAILROAD SPIKE IN W. FACE OF POWER POLE, 0.8' S. & 0.7' W. OF THE MOST EASTERLY SE. CORNER OF LOT 1, BLOCK A, QUIKTRIP 9TH ADDITION.

ELEV. = 1306.07 NGVD29

SQUARE CUT ON TOP OF CURB, W. SIDE OF ILLINOIS, 116' S. & 55' W. OF THE NW. COR., LOT 1, BLOCK A, QUIKTRIP 9TH ADDITION.

ELEV. = 1303.77 NGVD29

NOTE: This property does not lie in any FEMA mapped Floodplain or Floodway.